



BONDABILITY

Support provided by *Accessibility & Inclusion*



BONDABILITY



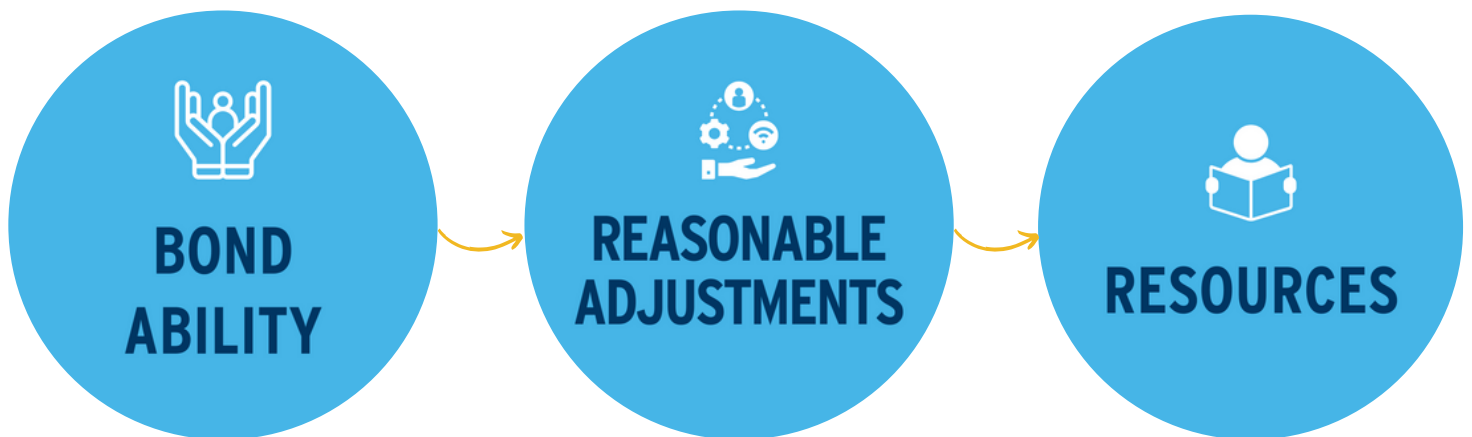
An accessible and inclusive campus for all Bond students

Do you have a physical condition, hearing impairment, mental health condition, medical condition, learning disability, vision impairment or neurological condition?

Through the BondAbility platform, the Accessibility & Inclusion Advisor will ensure that Bond University students who require and qualify for reasonable adjustments are afforded the same opportunities as their peers in all areas of campus life.

What information is in this student pack?

This student information pack contains key information, resources and links to guide you through the process of seeking additional support. You can also click on the circles below to view the webpages.



Contact Accessibility & Inclusion



Sarah Collins

Accessibility & Inclusion Advisor

accessibility@bond.edu.au

07 5595 4014

bond.edu.au/accessibility



BONDABILITY

What is BondAbility?

BondAbility is a one stop shop. Once logged in, you can apply for a Learning Access Plan, book an appointment with the Accessibility & Inclusion Advisor, renew your plan and apply for changes as needed.

When do I apply?

Students are all welcome to register with BondAbility, provided you are a currently enrolled student. Students can register regardless of study mode (on campus/online/distance) or study load (part-time/full time).

Registrations must be made in week 2 and completed by the end of week 3.

What is a Learning Access Plan?

A Learning Access Plan (LAP) is based on your specific circumstances and health situation as well as your program of study and faculty.

A LAP will have reasonable adjustments to help ensure learning can be accessed. The LAP will be communicated with the student and the faculty including the Student Affairs and Service Quality (SASQ) representatives from your faculty, Academic teams and placement coordinators where needed.

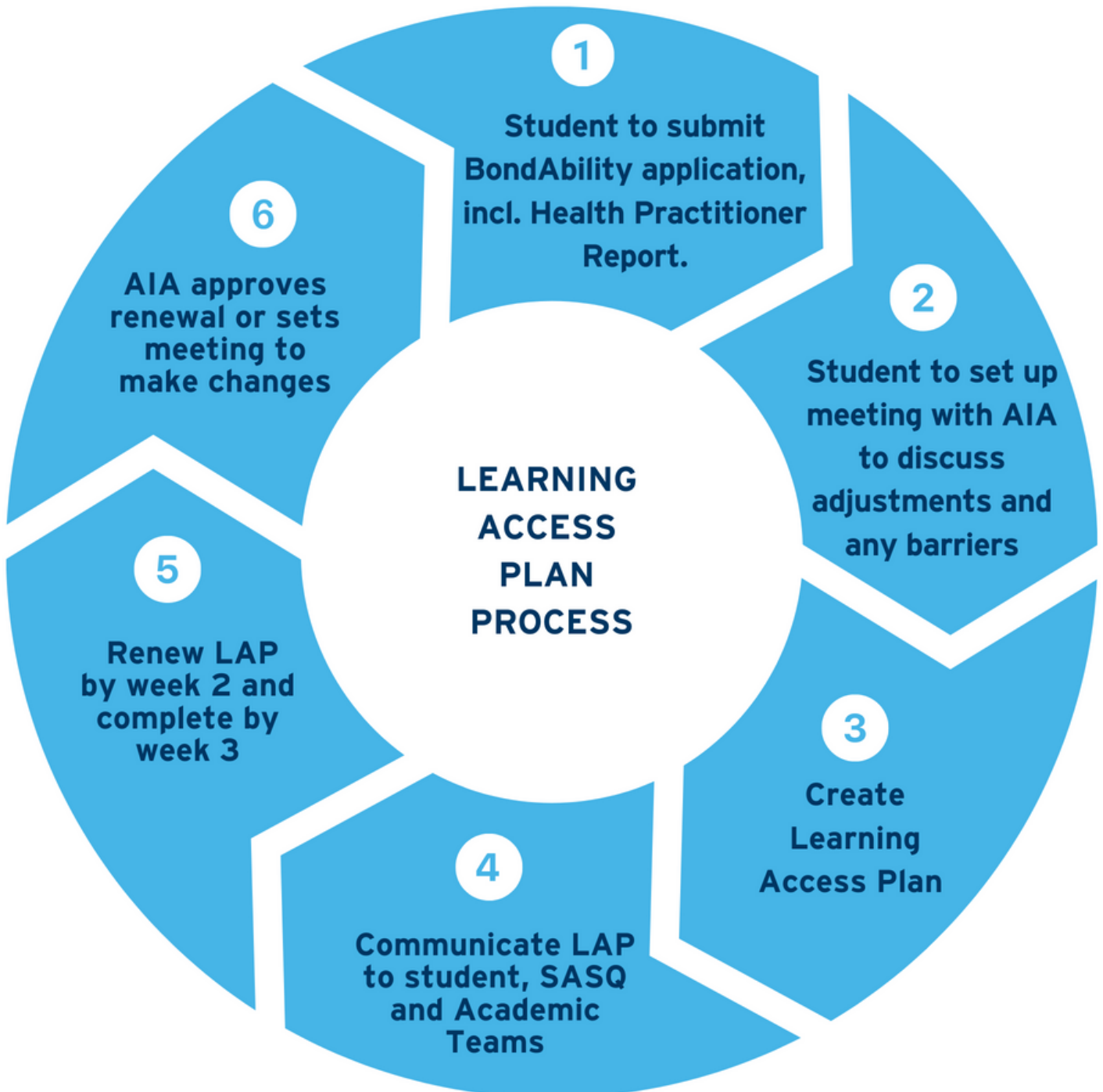
How can I access BondAbility?

To access the BondAbility portal, click the button below, or visit: bond-access.symplicity.com/public_accommodation/

VISIT
BONDABILITY



What is the process for accessing support?





REASONABLE ADJUSTMENTS

What are reasonable adjustments?

Bond University is committed to making every effort to provide personalised support to each student based on their individual requirements.

We will always endeavour to accommodate a student's reasonable adjustments although the university acknowledges it does have limited resources and facilities.

We require early notification in order to best assist you with adjustments to your studies.

Some of the adjustments we may be able to provide include:

Written exam/assessments

- Medication
- Extra time
- Medical equipment
- Food and drink
- Stress relief tools
- Scheduling
- Assistive technology
- Rooms
- Paper
- Enlargement
- Physical environment

Course work

- Extensions (to be negotiated)
- Lecture captions
- Oral presentations
- Group situations

Quiz/short test

- Medication
- Medical equipment
- Food and drink
- Assistive technology
- Paper
- Enlargement

Practical exam

- Extra time
- Scheduling

Placement/practical education

- Initial meeting with SASQ, placement coordinator and Accessibility & Inclusion Advisor.

N.B. Bond is unable to provide scribes, readers or note-taking assistance.



REASONABLE ADJUSTMENTS

Inherent requirements

Students must meet the inherent requirements to complete and graduate from a Bond University course or program.

Inherent requirements ensure students are given the opportunity to make informed decisions:

- as to whether a course or program is suitable and relevant for you, and
- the type of reasonable adjustments that could be put in place to allow you to complete your course without compromising the academic integrity of the course.

Visit bond.edu.au/future-students/study-bond/how-apply/inherent-requirements or click the button below to read more:

READ MORE





RESOURCES

What resources are available?

Bond University is committed to providing an accessible environment to support all students and their varying needs.

From our campus facilities through to academic resources, we provide a number of services that focus on creating an inclusive environment where all students have the same opportunity to succeed.



Read&Write

Read&Write is a Toolbar designed to help you with the process of researching, reading and writing with a wide variety of tools that you can customise.



Assistive Technology Room

The Library's Assisted Technology Room (ATR) is on level 4 of the Main Library. As a student who is registered with the Accessibility & Inclusion Advisor, you will have priority booking for the room. The ATR has features including a press button door opener and Emergency Assistance call button.



Library Service support

The Accessibility and Inclusion Advisor may refer you to the Library team to provide assistance and support with resource enquiries. The team works with you to understand your request and obtain the resource you need in the format you require.



Academic Skills Centre

Academic Skills Centre is here to help you develop your academic skills and reach your potential. We help with areas such as writing clearly and professionally, organising your ideas, studying effectively, referencing, and maths.



Limitless Learning - Mentoring & tutoring

Limitless Learning is Bond University's tutoring and social connectivity platform which is powered by the Vygo app. Simply download the Vygo app on your mobile device or access on any computer to connect with a fellow student and find the support you need.

Visit bond.edu.au/accessibility-resources
or click the button to read more:

READ MORE





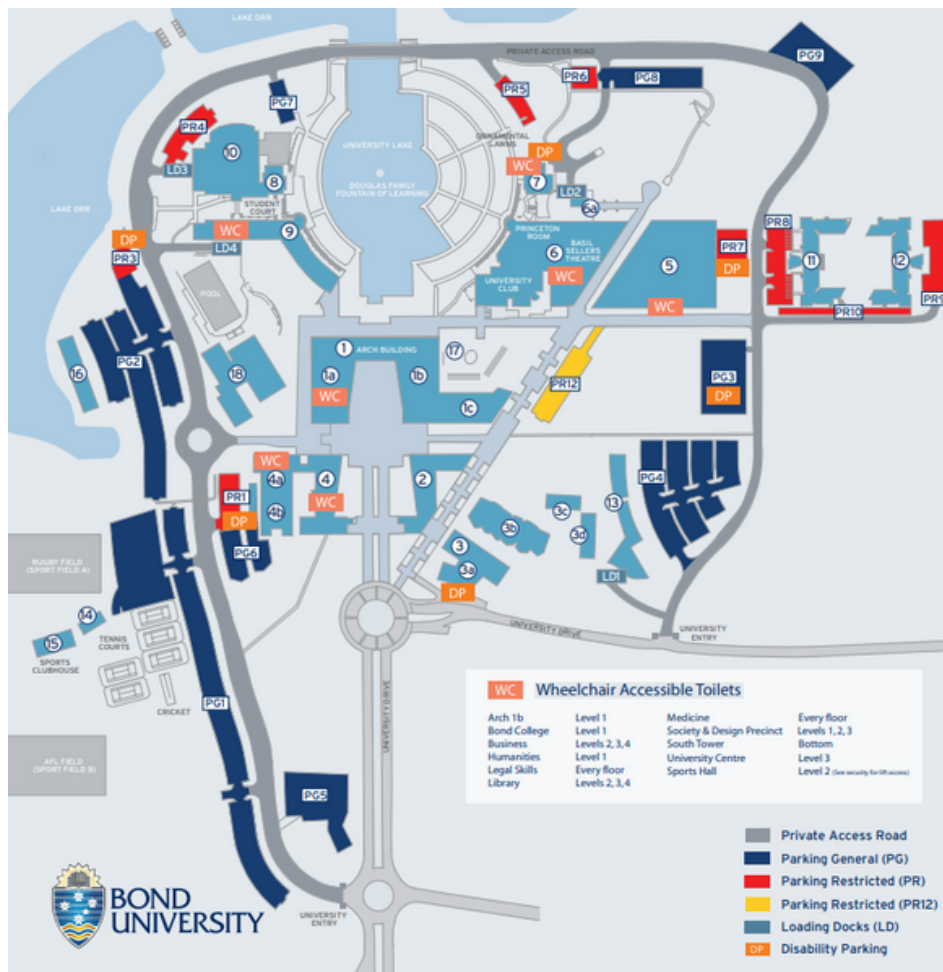
ADDITIONAL INFORMATION

PHYSICAL ACCESS

Bond University will endeavour to make its facilities accessible to all students. In particular, all new buildings are designed and constructed in accordance with the appropriate Australian standards.

All major renovations are checked for accessibility and there is an ongoing exercise to make all established buildings accessible for students with a disability. Please note that some lifts may have limited access, especially after hours.

Some student housing on campus is available with modified bathroom facilities to accommodate wheelchairs.



For a full list of wheelchair accessible features, visit bond.edu.au/campus-accessibility or click the button.

