



INSTITUTE FOR
Evidence-Based Healthcare

A stylized logo consisting of two overlapping curved lines, one blue and one yellow, positioned below the text.

*Ambition
Loves Company*

2025 IEBH ANNUAL REPORT

Acknowledgement of Country

In the spirit of reconciliation, Bond University acknowledges the Kombumerri people, the traditional Owners and Custodians of the land on which the university now stands. We pay respect to Elders past, present and emerging.



Contents

Director's report	5
Our people	6
Our partners	13
Our research	14
Research in action	15
Media impact	21
Research capacity building	22
Active grants	24
Awards	26
Events and other activities	30
Research outputs.....	37

OUR PURPOSE

To lead world-class research that transforms healthcare quality by integrating evidence with healthcare, to guide innovation and empower people.

Through collaborative partnerships with consumers, clinicians and policy makers, strive to deliver high-quality research that supports evidence-based practice and nurture the next generation of researchers committed to sustainable healthcare.

OUR VALUES

Impact Create meaningful change by focusing on what matters to people and communities; translating research into improved systems, policy and practice

Excellence Strive for the highest standards in research, leadership and practice, delivering outstanding outcomes with integrity, rigour and ethical responsibility

Collaboration Work together with consumers, communities and partners, fostering an inclusive and supportive culture where diverse perspectives are valued and wellbeing is prioritised

Leadership Demonstrate reflective, responsible and inspiring leadership that builds capability, mentors others and shapes future innovation

Innovation Embrace new ideas, technologies and approaches to solve problems creatively and drive continuous improvement

INSTITUTE FOR
Evidence-Based Healthcare



Director's Report



2025 was a year of transition for the Institute for Evidence-Based Healthcare at Bond University. I am immensely proud of our team, who maintained their commitment to high-quality research while investing significant time in shaping our future direction. Together, we refined our goals and priorities, resulting in the IEBH *Research Strategy 2026-29*, which outlines our commitment to high-impact research in primary care optimisation, evidence-informed decision-making and sustainable health and hospital systems.

Through this process, we clarified our mission and value proposition, refined success indicators, strengthened key collaborations, and positioned the Institute to leverage advances in healthcare research. At the same time, the team worked hard to develop strong applications to Australia's most

competitive funding schemes, leading to several major successes highlighted in this report. Engaging consumers and the community remained a priority. Following a national recruitment campaign, we convened Bond University's first Consumer Advisory Group in August. This group will help ensure consumer perspectives shape every stage of our research—from project design to advocacy and community engagement. My own work in empowering healthcare consumers and transforming cardiac rehabilitation was showcased in *'Beats of Change'* a World Heart Federation and BBC Storyworks collaboration featuring Gold Coast cardiac survivor Ross and the work of the SOLVE-CHD research team.

We also strengthened strategic partnerships, particularly with the Gold Coast Hospital and Health Service and I thank our Advisory Board – especially outgoing Chair Professor Peter Brooks - for their long-standing support. We look forward to building on these partnerships in 2026 through the development of a new collaborative research agreement with GCHSS outlining our shared goals and research priorities.

We farewelled Melanie Vermeulen, whose contribution to supporting IEBH research spans many years and welcomed Nicola Hodgman, who brings a wealth of experience in research strategy and stakeholder engagement. We also continue to benefit from Emeritus Professor Paul Glazsiou's valued involvement.

Our Institute's greatest strength lies in its people. I have taken great pleasure in supporting the next generation of research leaders. In 2025, we celebrated Dr Oyuka Byambasuren successful MRFF grant for the *BEACON model of care* and Professor Tammy Hoffman's recognition with the 2024 NHMRC Elizabeth Blackburn Award for Leadership in Health Services Research. I am grateful to Professor Nick Zwar, Executive Dean, and Bond University's senior leadership team for their ongoing commitment to strengthening our research capability and culture.

Professor Julie Redfern AM

Director, Institute for Evidence-Based Healthcare

Our People

The Institute for Evidence-Based Healthcare (IEBH) is home to a diverse and multidisciplinary team, including world-renowned researchers, dedicated research assistants, consumer advocates, professional staff, software and AI specialists, HDR students, and honorary adjuncts. United by a spirit of collaboration, we strive to drive excellence in research and innovation that makes a meaningful impact on health systems, communities, and individuals.

Staff

Academic

- Professor Julie Redfern AM, Director, NHMRC Investigator Grant L2
- Professor Tammy Hoffmann OAM, NHMRC Investigator Grant L2
- Emeritus Professor Paul Glasziou AO
- Professor Usman Iqbal, lead Evidence-Based Practice Professorial Unit with Gold Coast Health and Hospital Service
- Associate Professor Mark Jones, Biostatistician
- Associate Professor Elaine Beller, Biostatistician
- Associate Professor Elsa Dent, Commissioned Research Lead (January – September 2025)
- Associate Professor Loai Albarqouni, NHMRC Emerging Leader Fellowship 1
- Assistant Professor Sharon Sanders, Evidence Synthesis
- Assistant Professor Darryn Marks, Health Economist
- Assistant Professor Mina Bakhit
- Dr Oyuka Byambasuren, Assistant Professor
- Dr Alexandra Davidson, Postdoctoral Research Fellow
- Dr Sheraz Ali, Postdoctoral Research Fellow
- Dr Vini Do Rosario, Clinical Trial Coordinator

Honorary Adjuncts

- Assoc Professor Rae Thomas
- Assoc Professor Magnolia Cardona
- Assist Professor Anna Mae Scott
- Assist Professor Paulina Stehlik
- Assist Professor Zoe Michaleff
- Prof David Henry

Professional

- Nicola Hodgman, IEBH Manager
- Dr Matt Carter, Senior Software Developer
- Connor Forbes, Software Engineer
- Tian Liang, Software Developer
- Irene Priya Jose, Software Support Officer
- Hannah Greenwood, Senior Research Assistant
- Tiffany Atkins, Senior Research Assistant
- Liz Dooley, Managing Editor Cochrane ARI Group
- Justin Clark, Research Enhancement Manager
- Madeleen van der Merwe, Senior Research Assistant
- Dr Natalia Rogalski, Senior Research Assistant
- Melanie Vermeulen, Research Administration Officer



HDR Students

- Hannah Greenwood
- Madeleen van der Merwe
- Justin Clark
- Reneepearl Kim Sales
- Nimath Malawaraarachchi
- Elizabeth Bryant
- Alex Dymond
- Delo Subhaharan
- Sauravi Chand
- Allison Eastman
- Skye Meredith
- Dumisani Nkhoma
- Michelle Guppy (completed 2025)
- Kwame Peprah Boaitey (completed 2025)
- Eman Abukmail (completed 2025)

CONSUMER ADVISORY GROUP

Following a national recruitment campaign in early 2025, the inaugural meeting of the Institute for Evidence-Based Healthcare's Consumer Advisory Group took place on 6 August 2025, bringing together consumers to launch a collaborative new chapter in research engagement. Participants were introduced to the Institute's mission, recent achievements, and key research areas, including Long COVID, antibiotic resistance, and cardiovascular rehabilitation. In an open "blue sky thinking" session, attendees explored a wide spectrum of priority topics, from accelerating the uptake of practice-changing evidence and advancing digital health innovations to evaluating the impact of consumer advocacy and involvement. A second meeting was held in November. This initiative sets the stage for meaningful, ongoing consumer-led contributions to shaping IEBH's research agenda.



Front L to R: Sara Vonhoff, Nick Verry, Susan Hawes, Dr Oyuka Byambasuren, Dr Mina Bakhit, Melanie Vermeulen, Nicola Hodgman.
Back L to R: Belinda Davies, Elisha Vas (absent from photograph: Janney Wale, Darren Hicks and Christine Rees)

PhD Graduations



Dr Michelle Guppy

Thesis: “Chronic kidney disease management in general practice: preventing overdiagnosis and underdiagnosis.”
Dr Guppy’s research makes a significant contribution to improving healthcare practices in primary care. Her thesis placed her in the top 5% of doctoral submissions and was passed without the need for further examination or amendments. She was also awarded the prestigious Dean’s Award for Best PhD Thesis

We gratefully acknowledge the invaluable support and mentorship provided by Professors Paul Glasziou AO and Jenny Doust throughout Dr Guppy’s research journey.



Dr Kwame Peprah Boaitey

Thesis: “Exploring the natural history of acute infections commonly seen in primary care: existing evidence and potential value in antibiotic stewardship.”

Dr Boaitey’s work contributes meaningfully to the field of antimicrobial stewardship.

We thank Professor Tammy Hoffmann OAM FAHMS and Assistant Professor Mina Bakhit for their dedicated guidance and support throughout Dr Boaitey’s candidature.



Dr Eman Abukmail

Thesis: ‘Enhancing the communication of natural history and prognostic information to facilitate informed decision-making.’
Dr Abukmail’s research will enhance the translation of complex clinical information into formats that patients can understand and use; bridging the gap between research evidence and meaningful patient understanding. Dr Abukmail’s thesis.

We acknowledge the dedication of Eman’s supervisory team of Professor Tammy Hoffmann, Assistant Professor Mina Bakhit and particularly the contribution of the late Professor Chris del Mar.

Leadership roles

Professor Julie Redfern AM

- Board Member, World Heart Federation
- Member, NHMRC-MRFF Public Health and Health Systems Committee
- Co-Chair, World Heart Federation Forum Sex Differences and CVD
- Member, NHFA/CSANZ Australian ACS Guidelines Expert Writing Group
- Member, CSANZ Scientific Committee,
- Co-Chair, CSANZ Clinical and Preventive Cardiology Council
- Chair, CSANZ Clinical Trials Council
- Co-Director, Australian Cardiovascular Alliance (ACvA) Flagship
- Chair, ACvA, Scientific Advisory Committee
- Member, CSANZ Board of Directors for Education Trust
- Member, Queensland CVRN Executive Steering Committee
- Associate Editor, npj Digital Medicine
- Editorial Board Member, Heart Lung Circulation
- Member, Governance Sub-Committee, World Heart Federation
- Member, World Heart Federation Physical Activity and Obesity Expert Group
- Member, Implementation Science Health Conference Australia (ISHSCA) 2026, Scientific Committee
- Co-Chair, Scientific Program Committee, CSANZ ASM
- Chair, World Heart Federation Cardiac Rehabilitation Roadmap

Emeritus Professor Paul Glasziou OA

- Chair, International Collaboration for the Automation of Systematic Reviews (ICASR)
- Member of the Therapeutic Guidelines Board
- Founding Chair of the RACGP's Handbook of Non Drug Interventions (HANDI) Committee
- British Medical Journal Editorial Board

Professor Tammy Hoffmann OAM

- Director, Australasian EQUATOR Centre and member of EQUATOR Network Executive
- International Patient Decision Aid Standards (IPDAS) Steering Committee

- Deputy Chair, NHMRC Clinical Practice Guideline Committee for ME-CFS and Long Covid
- Member, NDIS Evidence Advisory Committee
- Royal Australian College of General Practice's (RACGP) Handbook of Non-Drug Intervention (HANDI) Working Group Member
- Chair: Australian Shared Decision Making Network
- Member of National Advisory Group, Palliative Care Knowledge Network
- Editorial board: BMJ Evid Based Med; Patient Education & Counselling; J Clin Epidemiol
- Grant reviewer for NHMRC and various other grant schemes
- Australian Academy of Health and Medical Sciences Qld Selection Committee

Professor Usman Iqbal

- SME Working Group Member, World Health Organization (WHO) Global Digital Health Competency Framework (GDHCF)
- Associate Faculty, Ariadne Labs - Joint center for health systems innovation at Brigham and Women's Hospital and the Harvard T.H. Chan School of Public Health, US
- Strategic Planning Committee, International Health Literacy Association (IHLA)
- Continuing Professional Development Committee Australasian College of Health Service Management (ACHSM)
- Research Council Advisory Committee, Gold Coast Health and Hospital Service (GCHHS)
- Vic/Tas Branch Council, Australasian College of Health Services and Management (ACHSM)
- Deputy Editor – International Journal for Quality in Health Care (IJQHC)
- Associate Editor – BMJ Health and Care Informatics Journal
- Editorial Board Member, BMJ Open Quality - Riphah Pakistan Edition
- Guest editor, Special Issue – Evidence Based Digital Health - BMJ Health and Care Informatics Journal
- Senior Representative & Board Member, Regional Patient Safety Consortium (Focus Group) in collaboration with Imperial College London

- Board Member, Giving Back to Pharmacy in Pakistan (GBTPP)
- Working Group Member, International Medical Informatics Association - (Telemedicine Working Group) – Switzerland
- Future Leaders Advisory Board Member, International Network of Health Promoting Hospitals and Health Services (FL-HPH) – Germany
- Committee Member, Standards Australia (Artificial Intelligence in Healthcare) – Australia
- Co-founder Taiwanese OHDSI chapter and Collaborator, Observational Health Data Science and Informatics (OHDSI)
- Australian Council of Senior Academic Leaders in Digital Health (ACSALDH)
- Certified Health Executive and Fellow of the Australasian College of Health Service Management (FACHSM CHE)
- Co-Founder – Australasian Chapter, MCBK (Mobilizing Computable Biomedical Knowledge)

Associate Professor Loai Albarqouni

- Editorial, BMC Medicine, BMC Primary Care, Scientific Reports (Nature), PLoS Global Health
- Guest Editor, Frontiers Public Health
- WisserHealthcare Executive Committee
- GoldNet PBRN steering committee
- International Society of Evidence-Based Health Care Board
- Board member, Emerging Voices for Global Health (EV4GH)
- DAAD Alumni network
- Faculty Research Committee
- Grant assessment committee: MRFF NHMRC Netherlands funding organization (ZonMw).

Associate Professor Mark Jones

- Coordinating Editor for the Cochrane Acute Respiratory Infections Group
- Member, GCHHS Ethics Committee
- Statistical Editor for the Journal of Fluency Disorders
- Member, Gold Coast University Hospital Research Council
- Member, Scientific Planning Committee for the Pandemic EVIDENCE Collaboration

Associate Professor Elsa Dent

- Co-founder, Frailty Epidemiological Research Network (EPI_FRAIL)
- Task force member, Australian and New Zealand Society for Sarcopenia and Frailty Research (ANZSSFR)

Assistant Professor Sharon Sanders

- Member, Australasian EQUATOR Network Centre
- Modifying Disease Definitions Executive Group
- GCHHS Allied Health Research and Innovation Leadership Committee

Assistant Professor Darryn Marks

- Chair: AHPRA Physiotherapy Board Australia / Australian Physiotherapy Association Prescribing Working Group
- Physiotherapy representative Member Interprofessional Education Committee, Bond HSM

Assistant Professor Mina Bakhit

- Editorial member, British Journal of General Practitioners
- Associate Editor, Patient Education and Counselling Journal Editorial Board
- Co-ordinator of the Australian-New Zealand General Practice Research on Infections Network
- Australasian Association for Academic Primary Care [AAAPC]: Education Subcommittee Member

Dr Oyuka Byambasuren

- Founding evidence-informed fellow of The Pandemic EVIDENCE Collaboration
- Diversity and inclusion representative, Wisser Healthcare
- Lead, Institute for Evidence-Based Healthcare Consumer Advisory Group
- IEBH Representative, HSM Faculty Research Committee, Bond University

Dr Ali Davidson

- IEBH Journal Club Convenor
- Member, 'Early and Middle Career Academics' and 'Education' Sub-committees of the Australasian Association of Academic Primary Care

- Steering Committee Member, Allied Health Representative of GoldNet - Practice-Based Research & Education Network
- CSANZ Multidisciplinary Stream Lead, Annual Scientific Conference
- Coordinator of GoldNet - Practice-Based Research & Education Network

Dr Sheraz Ali

- Guest Editor (Special issue), Journal of Personalized Medicine
- Review Editor (Drugs Outcomes Research and Policies), Frontiers in Pharmacology
- Adjunct Professor, Charles Sturt University

Liz Dooley

- Managing Editor for the Cochrane Acute Respiratory Infections Group

Justin Clark

- Board Member, Asia-Pacific Network for Evidence Analysis, Synthesis and Translation (APN-EAST)

- Organising committee for annual ICASR conference

Hannah Greenwood

- HDR student representative, Bond University Research Committee and HDR Subcommittee
- Institute for Evidence-Based Healthcare PhD Peer Support Group co-founder and chair
- Member of Early and Mid-Career Academic subcommittee for AAAPC

Reneeppearl Kim Sales

- Board Member, Women in Global Health
- Convener, Women in Global Health Philippines
- Visiting Fellow, Health Systems Science, The George Institute for Global Health
- 2025 Mentor, Global Health Mentorships
- Partner, Alliance for Improving Health Outcomes



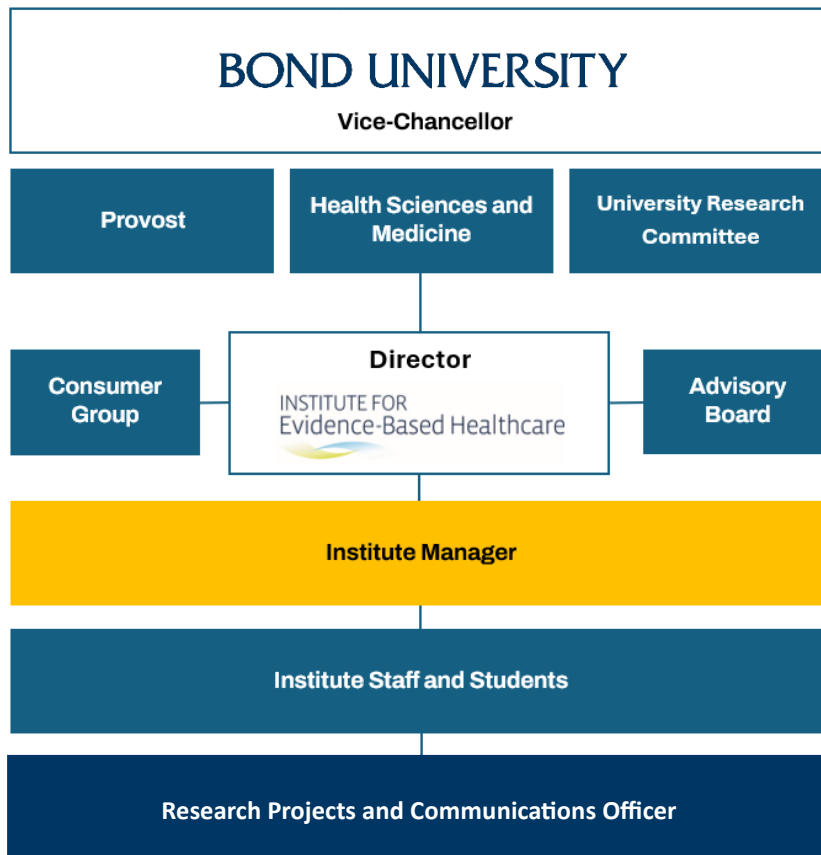
ADVISORY BOARD

The Advisory Board of the institute meets twice a year. Its primary aim is to provide high-level strategic guidance to the Institute Director. The board provides advice and recommendations to the Institute Director on national and international priority areas impacting the institute's operations, current strategic plan, funding opportunities, risk management and stakeholder engagement

Members

- Professor Nick Zwar (Chair), Executive Dean, Faculty of Health Sciences and Medicine, Bond University
- Professor Julie Redfern AM, Director, Institute for Evidence-Based Healthcare, Bond University
- Professor Peter Brooks, Centre for Health Policy, School of Population and Global Health, University of Melbourne (term completed in December 2025)
- Professor Virginia Barbour, Editor-in-Chief of the MJA and Director of Open Access Australia
- Professor Michael Kimlin, Deputy Provost Research, Bond University
- Brett Walker, Acting Vice President Engagement, represented by Duane Kelaart, Head of Engagement Bond University
- Dr Talia Avrahamzon, Head of Policy and Advocacy, Research Australia
- Professor Scott Bell, Director of Research, Gold Coast University Hospital
- Dr Aaron Davis, A/Director Research and Technology Assessment at Clinical Excellence Queensland, Queensland Health
- Jessica Toleman, Service Line Director, Surgery and Critical Care, Logan Hospital (term completed in July 2025)
- Nicola Hodgman, Research Manager, Institute for Evidence-Based Healthcare, Bond University

IEBH GOVERNANCE STRUCTURE



Our Partners

COMMUNITY AND CONSUMER GROUPS



HEALTHCARE PROVIDERS



GOVERNMENT AND POLICY AGENCIES



INTERNATIONAL COLLABORATIVES

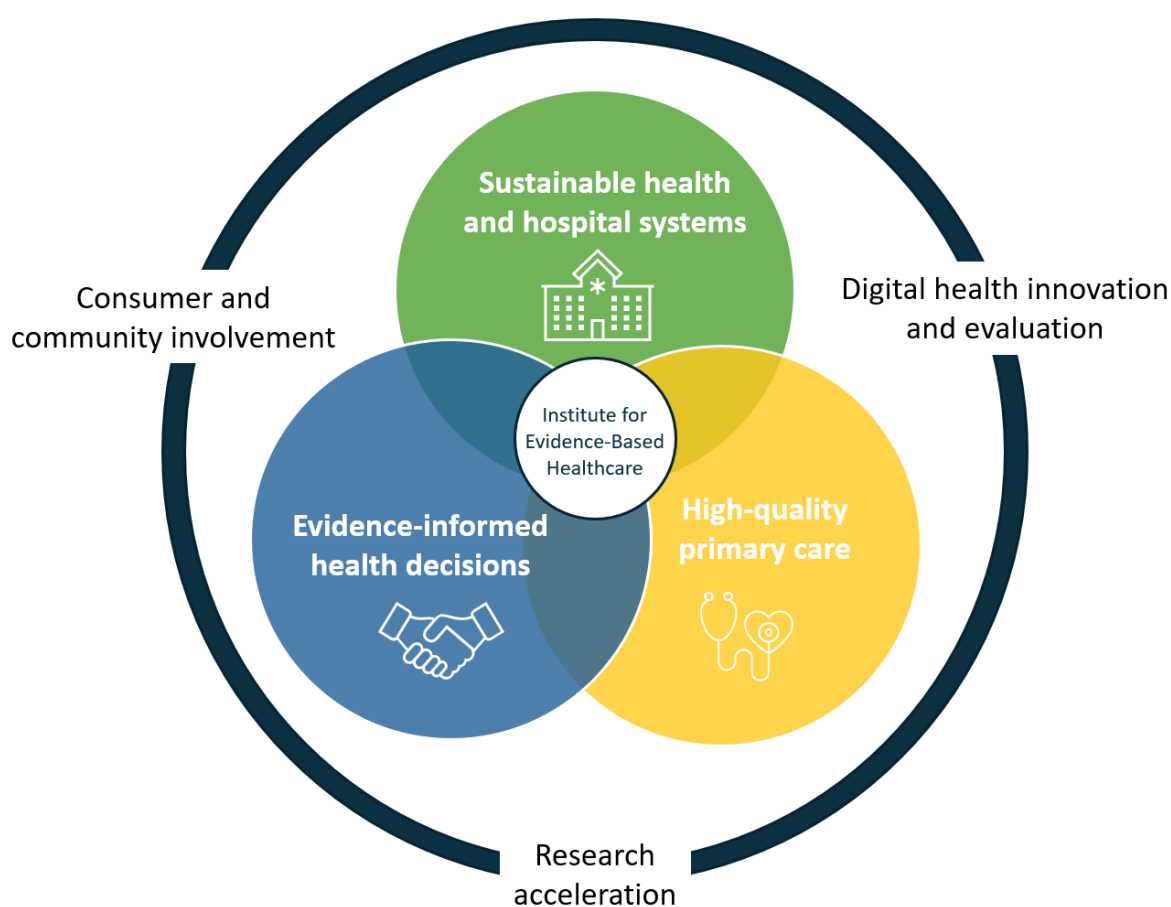


We are deeply grateful for the continued support and shared vision of these partners, whose contributions are vital to our mission.

Our Research

Our research focuses on strengthening and optimising primary healthcare, ensuring systems are sustainable, efficient and person-centred. We accelerate high-quality evidence generation and translation to support informed health decisions by clinicians, policymakers, patients and communities. Through rigorous evidence synthesis, implementation research and real-world evaluation, we enhance care models for chronic and emerging health conditions. We advance digital health and AI innovations by assessing safety, effectiveness, equity and trustworthiness. Central to all our work is meaningful consumer and community engagement, ensuring research is co-designed, relevant and responsive to the people it serves.

INSTITUTE STRATEGY 2026-2029



Schematic overview of the interconnected IEBH **pillars** (sustainable health and hospital systems, high quality primary care, evidence-informed health decisions) and **enablers** (digital health innovation and evaluation, research acceleration, consumer and community involvement).

Research in Action

This section presents selected project overviews and impact stories that illustrate our research and the significance of our team's research contributions.



Evidence-based antimicrobial stewardship: Sustainable implementation in primary care – the EASSI-PC TRIAL

The (EASSI-PC) GP-led collaboration is driven by a shared hope to strengthen antimicrobial stewardship and support safer prescribing practices in general practice. Our national study aims to address issues across the four participating states by implementing evidence-based strategies to reduce unnecessary antibiotic prescriptions for common conditions.

On 16 September 2025, chief investigators from the four lead institutions gathered for the second annual meeting chaired by Emeritus Professor Paul Glasziou. The meeting marked a major step forward as the trial transitions from planning to implementation. Key updates included:

- Launch planning for the EASSI-PC website and tailored, state-specific newsletters to engage GPs ahead of the randomised controlled trial starting in 2026.
- Agreement on practical resources to support GPs in implementing various antimicrobial stewardship strategies.

Finalisation of the trial protocol, recruitment plan and associated ethics documentation were completed in late 2025, with recruitment expected to commence in mid-2026. A staged webinar series was held during Antibiotic Awareness Week in November, with another session planned for early 2026.

Funding: \$4M MRFF Clinical Trials Activity Grant (2024-28)

Chief Investigators: A/Prof Mina Bakhit, Prof Paul Glasziou AO, Prof Tammy Hoffmann CIs from University of Melbourne, University of Adelaide, University of Newcastle, Dr Janney Wale (Consumer)



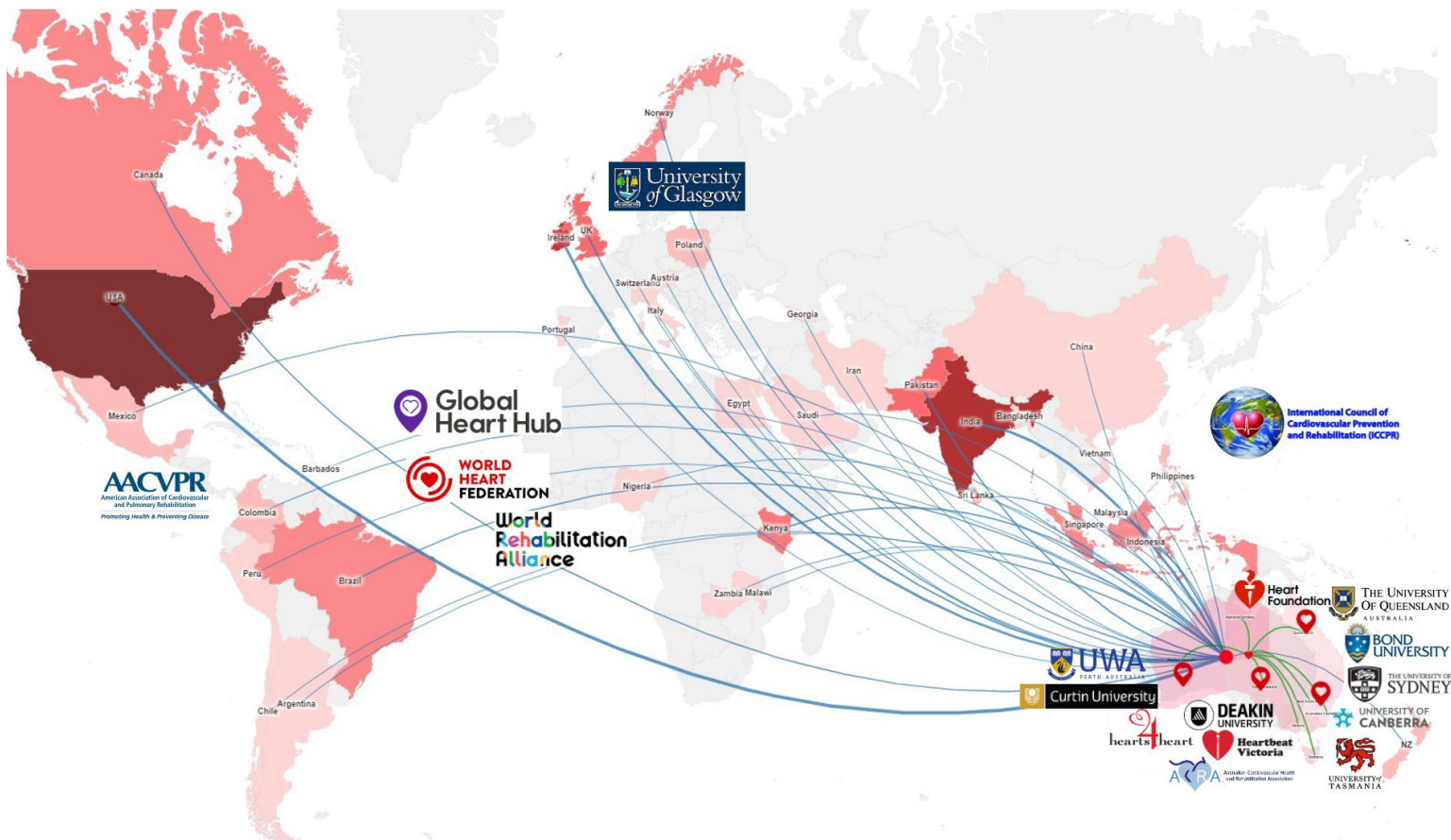
Global Leadership, National Standards, and Community-Driven Innovation

In 2025, under the leadership of the Principal Investigator Professor Julie Redfern the Solve-CHD initiative has successfully translated high-level research into global policy and high-visibility community action. The flagship academic component ‘Heart2Heart’ successfully completed recruitment across national cardiac services. With all participants randomized and follow-up data progressing ahead of schedule, the study is maintaining exceptional retention rates through automated and personalized engagement strategies. The SOLVE-CHD Network has expanded to 500+ members, with 20% of the membership now based outside of Australia, reflecting our growing international footprint. Other achievements include:

- **WHF Board & Global Roadmap:** Professor Julie Redfern’s appointment to the World Heart Federation (WHF) Board and her role as Co-Chair of the WHF Roadmap on Cardiac Rehabilitation (launched in Madrid, August 2025), cementing SOLVE’s influence on the global stage.
- **‘Life After Heart Disease’ BBC StoryWork Series:** SOLVE-CHD led the only Australian entry in ‘Beats of Change’, a global series by the World Heart Federation produced by BBC StoryWorks. Our featured episode, “Life After Heart Disease,” achieved an extraordinary 2.8 million video views by the end of 2025, showcasing SOLVE-CHD’s research and the recovery journey of a patient named Ross to a massive international audience. The series premiered locally at Gold Coast University Hospital on World Heart Day, highlighting Bond’s connection to world-class health storytelling and public engagement.
- **Workforce Upskilling:** The ACRA-funded Clinician Certification achieved an 80% completion rate, with over 350 clinicians now credentialed with ICCPR CRFC.
- **Bond University Retreat:** In May 2025, the SOLVE-CHD hosted 25+ multidisciplinary leaders to align on national priorities for standardising and uplift the quality of Australian Cardiac Rehabilitation.
- **Consumer Partnerships:** A formal collaboration with consumer advocacy group Hearts4Heart ensures that consumers are active co-designers in research, recruitment, and advocacy.
- **The HeartStrong project:** Led by Professors Redfern, Gallagher and team, was recognised as a top 20 finalist in the National Heart Foundation of Australia’s Catalyst Partnership Grant.

Funding: \$5,000,000 NHMRC Synergy Grant

Program lead: Prof Julie Redfern



Optimising the uptake of effective underused non-drug evidence-based interventions in primary care

Many people with chronic diseases get advice to eat better, move more, or cut salt, but it's often vague, hard to follow, and forgotten after leaving the clinic. e-HANDI changes this by turning RACGP HANDI-approved lifestyle treatments – the "pharmacopoeia" of proven non-drug interventions, with most shown cost-effective in our BMJ analysis of 156 trials (4/10 cheaper and better than alternatives) – into clear digital prescriptions: a GP picks high blood pressure, selects salt substitution, and generates a personalised plan sent to the patient's phone/email with reminders to build adherence.



Over 200 GPs have used e-HANDI since launch after co-design, and our pilot trial (24 GPs) confirmed it's acceptable, appropriate, and feasible (4/5 ratings), with early prescription boosts (+10%). It motivates via GP dashboards tracking prescribing vs peers and patient uptake, plus patient reminders – making lifestyle care routine. National rollout to 35,000 GPs could reach 1M patients, lower blood pressure 10-15%, cut medication overload, save \$500M+ in costs, and equitably support rural/First Nations communities.

Funding: \$957,375 NHMRC Emerging Leadership Fellow Investigator Grant (2022-26) and \$75,000 National Heart Foundation Vanguard Grant (2023-24)

Chief Investigators: A/Prof Loai Albarqouni, Prof Paul Glasziou, Dr Ali Davidson, Hannah Greenwood, Tiffany Atkins, Darryn Marks

The Australian Long COVID Adaptive Platform (ALCAP) Grant

All projects proposed under the ALCAP grant were successfully delivered by completion of the granting period (December 2025), including:

- Creation of a comprehensive living evidence database of Long COVID treatment trials that includes 150 randomised controlled trials, 20 registered ongoing trials, and 60 systematic reviews, providing an up-to-date evidence infrastructure to support prioritisation and future trial design.
- A national treatment prioritisation process involving 140 consumers and 40 clinicians. Through a structured series of surveys and facilitated ranking workshops, more than 100 candidate interventions were systematically evaluated and refined to a shortlist of 14 priority treatments for future investigation.
- Findings from the program, including the treatment prioritisation methodology and results, were presented at the 2025 Research, Innovation, and Development Conference on ME/CFS, Long COVID, and Gulf War Illness, and at the 2025 National Long COVID Scientific Meeting at La Trobe University. Manuscripts describing the treatment prioritisation process and the living evidence database are currently under peer review.

The ALCAP program substantially strengthened research capacity, methodological infrastructure, and national collaborative networks in Long COVID. The foundational work supported by ALCAP directly underpinned Dr Oyuka Byambasuren's subsequent successful \$2.6 million competitive MRFF grant (announced in December 2025) to develop and evaluate a primary care-based model of care aimed at improving Long COVID management and patient outcomes.

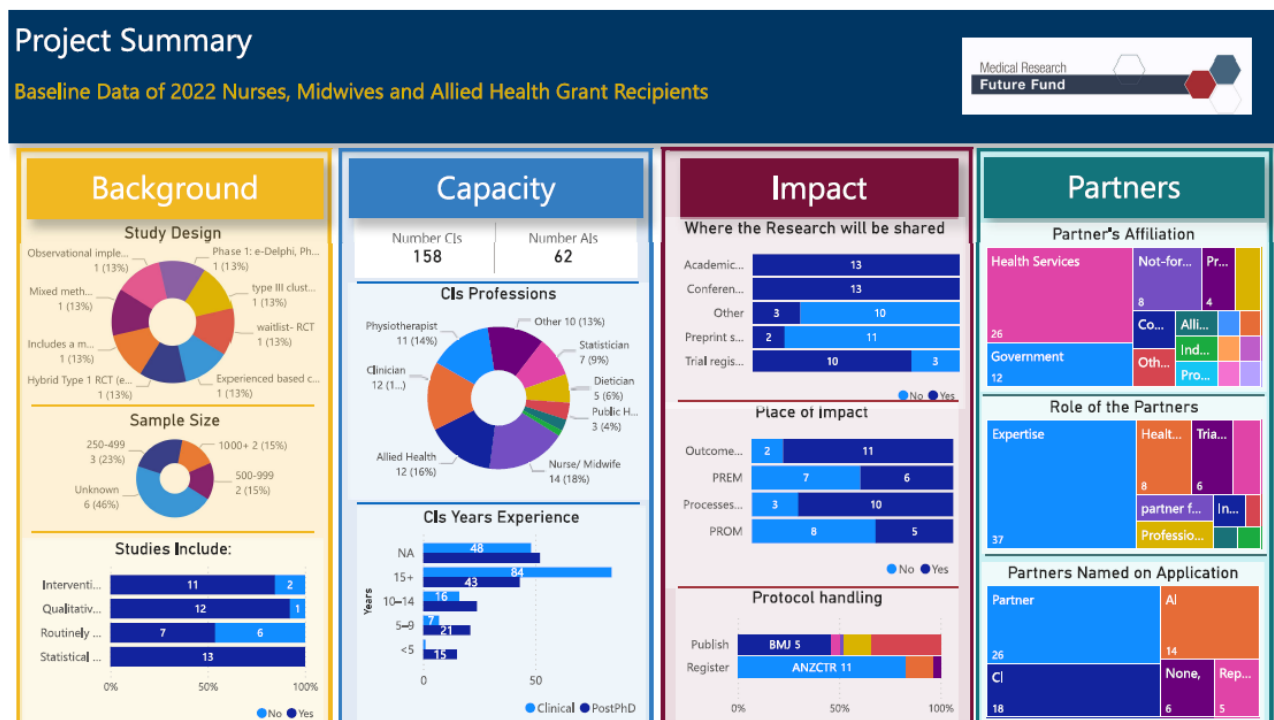
Funding: \$245,688 MRFF 2023 Post-Acute Sequelae of COVID-19 Grant Opportunity

Chief Investigators: Prof Paul Glasziou, Dr Oyungereel Byambasuren, Prof Nick Zwar, A/Prof Mina Bakhit, Tiffany Atkins (IEBH, Bond University) with CIs from University of Sydney, University of Wollongong, University of New England, University of NSW, Flinders University, Department of Prime Minister and Cabinet, Curtin University.

Adoption, impact and sustainability of evidence-based practice into health care: co-design and evaluation of projects, systems and processes

This MRFF-funded evaluation project examines how clinician-led research projects are being adopted, implemented and sustained across participating health services. It focuses on understanding early impacts, strengthening translation pathways, and building scalable systems for monitoring progress, partnerships and capacity-building outcomes. 2025 highlights include:

- The evaluation framework 'the MRFF Impact Baseline Survey' was completed by all grant recipients by September 2025, providing the first consistent dataset to support both individual and program-level reporting.
- Program-level visualisations were produced using Power BI, while an R-based automated reporting framework was established to generate detailed case reports for each project. This dual reporting system combined quantitative indicators with short summaries. Collaboration with Bond Business School helped improve reproducibility and automation. Baseline case reports were provided to all 14 grantees, and their feedback informed revisions to the first follow-up survey.
- By the end of 2025, the follow-up survey had been built, tested and distributed through REDCap, achieving a 100% completion rate.



Funding: \$299, 119 MRFF 2022 Nurses, Midwives and Allied Health Grant (2023 – 2028)
Chief Investigators: CIA Prof Julie Redfern (IEBH) CIs from Flinders University, University of Sydney, University of Wollongong, University of Newcastle

The Evidence Review Accelerator (TERA)

In 2024, the alpha version of the Evidence Review Accelerator (TERA) was launched, followed by the release of the commercial version in 2025 by IEBH's Automation Team. TERA not only consolidates the suite of tools that researchers world-wide have relied on for many years, but also delivers substantial quality-of-life improvements. Importantly, TERA now provides full end-to-end support for systematic reviews, offering tools for every stage - searching, screening, quality assessment, data extraction, synthesis and even manuscript preparation.

The launch of TERA has been a success with uptake far exceeding expectations. The platform now has over 10,000 registered users, supporting over 9,000 projects and has been accessed more than 440,000 times. While Bond University represents the largest user group, with 120 staff and 400 students holding accounts - TERA has achieved global reach. Its top 10 countries are: 1) Australia; 2) United States; 3) United Kingdom; 4) Germany; 5) Italy; 6) Brazil; 7) Spain; 8) Canada; 9) India; and 10) Switzerland.

TERA is a central component of the IEBH Research Acceleration Program, which is dedicated to enabling faster, more efficient research. The program supports researchers within IEBH, across Bond University, and internationally by providing access to same tools that have long enhanced research productivity at IEBH.

Accelerate your research with the Evidence Review Accelerator (TERA)



TERA is a multi-study research accelerator that enables both reviews and studies to be conducted faster with no impact on the quality of the research.

[Sign up free →](#)



TERA usage graph, per pageview, from January 2024

The continued success of the Research Acceleration Program – and TERA – is a testament to the expertise and commitment of the talented staff who drive this work.



Research Acceleration Team L to R: Irene Priya Jose, Tian Liang, Justin Clark, Dr Matt Carter, Connor Forbes



EVIDENCE-BASED PRACTICE PROFESSORIAL UNIT

The Evidence-Based Practice Professorial Unit (EBPPU) is a long-standing (2015-2025) partnership between the Gold Coast Hospital and Health Service and the Institute for Evidence-Based Healthcare at Bond University. The focus of the partnership has been to educate, facilitate and inspire healthcare workers to become active users, participators and leaders in research and evidence-based practice.

The EBPPU develops and conducts bespoke support and clinician-researcher development aimed at providing health service staff with EBP and research skills and knowledge. The Unit has supported a number of clinician led research projects, facilitated Journal Clubs and contributed research leadership through serving on a number of committees, including for Ethics and Research.

Bond University proudly sponsors a number of key health service initiatives, including the annual Research and Innovation Showcase and collaborative grant funding schemes. Staff of the GCHHS are also given training and free of charge access to The Evidence Review Acceleration (TERA) suite of research acceleration and review tools.



Media Impact



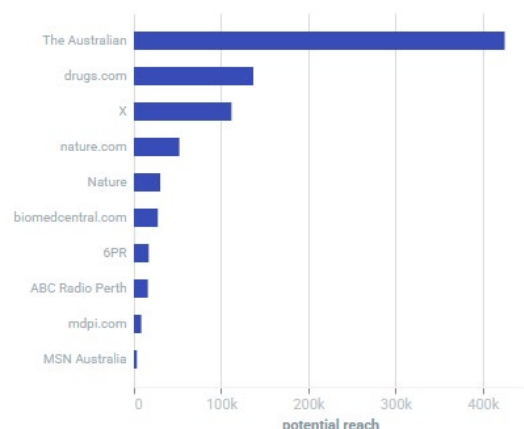
In 2025, the Institute for Evidence-Based Healthcare (IEBH) received **93 media mentions** across a range of outlets, generating a **potential audience reach of 841,649** and an **Advertising Space Rate (ASR) equivalent of AUD 5.36 million**. Coverage was strongest in **online media**, which accounted for **54 mentions** and delivered the highest overall ASR value, highlighting the importance of digital platforms in disseminating the Institute’s research and expert commentary. Newspapers, while producing fewer articles, achieved the **largest potential reach (418,000)**, demonstrating the impact of traditional media in extending visibility to broader audiences.



IEBH leadership played a prominent role in media engagement. **Professor Julie Redfern** was the most frequently cited spokesperson, with **36 mentions**, contributing significantly to the Institute’s public profile and helping translate research evidence into accessible insights for the community and media.

- Julie Redfern - IEBH
- Paul Glasziou - IEBH
- Oyuika Byambasuren - IEBH
- Darryn Marks - IEBH
- Elsa Dent - IEBH
- Hannah Greenwood - IEBH
- Justin Clark - IEBH
- Mark Jones - IEBH
- Mina Bekhit - IEBH

Coverage appeared across a variety of outlets, including major national media. **The Australian** generated the largest audience reach, while social **media platform X** produced the highest number of mentions. Academic and research platforms such as **Nature** and **MDPI** also contributed notable ASR value, reflecting strong engagement with both mainstream and scholarly audiences.



The media results demonstrate the Institute’s growing visibility and influence in public discussions on health and research. The combination of online, print, and academic coverage highlights the Institute’s capacity to reach diverse audiences and strengthen the translation of evidence-based research into public and policy conversations.

Research Capacity Building

JOURNAL

In 2025, 19 presenters from diverse disciplinary backgrounds contributed to a dynamic year of growth and peer learning through IEBH's Journal Club. Sessions covered a broad range of topics - including dietary and medical research, methodological innovations, career development, skills development and psycho-social issues. Attendees included HDR candidates from the Institute as well as colleagues across the Faculty of Health Sciences and Medicine, representing multiple career stages and areas of expertise.

EARLY MID-CAREER RESEARCHERS' ACTIVITIES

Throughout 2025, the Institute continued to prioritise the career development and success of its early and mid-career researchers (EMCRs). Regular EMCR meetings were held, led alternately by either Professors Redfern, Glazsiou or Hoffmann. These sessions focussed on mentoring and supporting the next generation of leaders with guidance tailored to key areas of research development, including: grant writing and funding pathways; promotion readiness; career planning and leadership development; building national and international research networks, HDR supervision; and, publication strategies. The group were able to celebrate individual successes including a promotion and a successful EMCR-led grant and to support each other through the arduous process of submitting category 1 grants.

PHD PEER SUPPORT GROUP

IEBH-supervised doctoral candidates met monthly in a peer learning environment to discuss topics ranging from research procedures and methodological approaches to managing the challenges and opportunities encountered through their candidature. The Group provides a supportive community of practice and contributes to a positive culture of collaboration, wellbeing and career progression at IEBH. In 2025, the Group celebrated the conferral of doctorates for three members and welcomed four new candidates into the community.

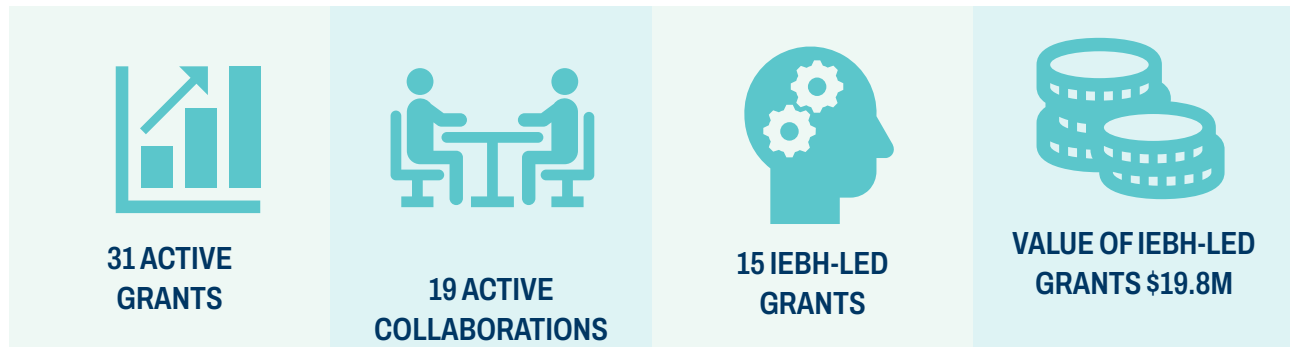
TERA TOOLS - WORKSHOPS FOR BOND STAFF AND STUDENTS

Workshops to support the use of The Evidence Review Accelerator (TERA) research acceleration, AI and evidence synthesis tools were held through 2025 for Bond staff, students, and external researchers conducting systematic or scoping reviews.





Active Grants



IEBH-led with team member named as Chief Investigator A or Principal Investigator

FUNDER	YEAR	AMOUNT	TITLE	TEAM
NHMRC Investigator Grant Leadership Level 2	2022-6	\$2.6M	Modernising cardiac rehabilitation and secondary prevention of heart disease	Redfern J
Wereld Kanker Onderzoek Fonds (World Cancer Research Fund)	2023-6	\$543K	Bridging the gap in physical activity and diet support for breast cancer survivors: a randomised controlled trial in primary care	Redfern J
NSW Health, Cardiovascular Senior Researcher Grant	2022-5	\$750K	Providing a peer support program to people with heart disease across NSW: An implementation project	Redfern J
MRFF Cardiovascular Mission	2021-5	\$655K	Implementation of a peer support program for people with heart disease	Redfern J
NHMRC Cochrane Collaboration Round 8	2020-26	\$768k	Cochrane Acute Respiratory Infections Group	Jones M
NHMRC Investigator Grant Leadership Level 2	2026-30	\$2.8M	Harnessing the power of prognostic evidence to transform evidence-based, patient-centred, sustainable healthcare	Hoffmann T
NHMRC Investigator Grant Emerging Leadership Level 1	2022-6	\$957K	Optimising the uptake of effective underused non-drug evidence-based interventions in primary care	Albarqouni L
MRFF Clinical Trials Activity	2024-9	\$4M	Evidence-based Antimicrobial Stewardship: Sustainable Implementation in Primary Care – The EASSI-PC Trial	Glasziou P, Bakhit M, Hoffmann T, Jones M
NHMRC Synergy Grant	2024-6	\$5M	Solving the long-standing evidence-practice gap associated with cardiac rehabilitation and secondary prevention of coronary heart disease (SOLVE-CHD)	Redfern J
MRFF Clinician Researchers Initiative	2024-8	\$299K	Adoption, impact and sustainability of evidence-based practice into healthcare: Co-design and evaluation of projects, systems and processes	Redfern J
MRFF Post-Acute Sequelae of COVID-19	2024-5	\$245K	Australian Long COVID Adaptive Platform Trial – ALCAP trial	Glasziou P, Byambasuren O, Bakhit M
Gold Coast Hospital and Health Service and Bond University	2021-6	\$900K	GCHHS EBPPUnit: Extension GCHHS Professorial Unit Conjoint	IEBH Team
NHMRC Tender	2024-6	\$240K	Ultra-Processed Food Intake and All-Cause Mortality, Cardiovascular Disease, Type 2 Diabetes, Cancer, and Mental Health in adults	IEBH Team

IEBH-collaborative grant with team member named as a Chief Investigator

FUNDER	YEAR	AMOUNT	TITLE	TEAM
CIF MRFF International Clinical Trial Collaborations Round 2	2023-7	\$2.9M	Personalised Exercise-Rehabilitation FOR people with Multimorbidity -The PERFORM trial	Led from Monash University, Redfern J
CIB 2021 MRFF Cardiovascular Health Mission	2022-5	\$894K	Application Title: Identifying and addressing barriers and enablers to implementing best-practice cardiac rehabilitation: the Quality Improvement in Cardiac Rehabilitation (QUICR) Cluster-Randomised Controlled Trial	Led from University of Sydney, Redfern J
CIB MRFF PHCRI Primary Health Care Research Application	2021-5	\$511K	Health4Me: Improving adolescent physical activity and nutrition behaviours via primary care	Led from University of Sydney, Redfern J
CIB 2020 Secondary Prevention Strategic Grant	2022-4	\$999K	Secondary Prevention for All in Need (SPAN) after Type 1 myocardial infarction: a comparative effectiveness randomised trial	Led from University of WA, Redfern J
CIC MRFF Preventive and Public Health Research Initiative - Consumer-Led Research	2023-5	\$799K	Adolescent-led transformation of preventive and public health research using citizen science	Led from University of Sydney, Redfern J
CI MRFF Preventive and Public Health Research Initiative - 2021 Consumer-Led Research	2023-5	\$598K	HeartPath+: Targeting self-efficacy and health literacy through patient education to prevent recurrent heart events in Australians with heart disease	Led from Monash University, Redfern J
MRFF 2023 Multi-disciplinary Models of Primary Care	2024-29	\$3.4M	An automatic electronic frailty index in Australian primary care and a toolkit for action	Bond led, Davidson A
MRFF Cardiovascular Health Mission	2025-8	\$1.9M	ECMO-RECOVERY+: A randomised controlled trial of ongoing telerehabilitation and support for patients who have received ECMO	Led from Monash University, Redfern J, Glasziou P
NHMRC Partnership Project	2025-8	\$1.6M	Promoting evidence-informed decisions about IVF add-ons through co-design, implementation, and evaluation of a new website	Led from University of Melbourne, Hoffmann T
MRFF 2023 NCRI Innovative Trials	2025-6	\$229K	Preventing intrapartum fetal asphyxia: the iSEARCH Pre-Platform Pilot	Led from University of Sydney, Hoffmann T
NHMRC Ideas Grant 2024	2025-8	\$430K	Controlling stuttering without anxiety: Proof of concept for a new method	Led from University of Technology Sydney, Jones M
MRFF Preventative and Public Health Research Initiative	2024-7	\$1.5M	PANDA Trial: Physical Activity in Nature for Cardiometabolic Diseases in People Aged 45y+	Led from University of Sydney, Redfern J
MRFF Primary Health Care Digital Innovations	2023-7	\$1.6M	The NOTUS trial (Non-pharmacological Treatment for chronic low back pain Using digital health technology)	Led from University of New south Wales, Byambasuren O
NHMRC CRE	2022-6	\$2.5M	Wiser Healthcare: better value care for all Australians	Led from University of Sydney, Glasziou P
MRFF Clinical Researchers Initiative	2022-5	\$3M	PROMOTE: a cluster-randomised implementation trial to promote evidence use	Led from Flinders University, Hoffmann T
NHMRC CRE	2021-5	\$2.5M	Wiser Wound Care: Investing in High Volume, High Risk Wound Care Centre of Research Excellence	Led from Griffith University, Glasziou P

Awards

In 2025, our team continued to demonstrate exceptional dedication, innovation, and impact across research, education, and community engagement. From national honours to institutional accolades, these achievements reflect the strength of our collective efforts and the outstanding contributions of individuals who go above and beyond. In this section, we proudly highlight the awards and recognitions received throughout 2025, showcasing the talent and commitment that define our team.

Professor Julie Redfern AM

Professor Julie Redfern AM was recognised in the 2025 Australia Day Honours as a Member of the Order of Australia for her outstanding contributions to public health, research, and community service. A leader in cardiovascular disease prevention and allied health, she has advanced evidence-based care through her academic work and mentorship. Beyond her professional achievements, Professor Redfern has made a lasting impact through her volunteer leadership with Surf Life Saving NSW, helping her local club earn national recognition and strengthening community safety and engagement.



Emeritus Professor Paul Glasziou AO

Bond University proudly bestowed the title of Emeritus Professor to Professor Paul Glasziou AO on 20 March 2025, in recognition of his exceptional contributions to evidence-based medicine and his enduring commitment to advancing healthcare research and education. Throughout his distinguished career, Professor Glasziou has significantly influenced the medical community, both nationally and internationally. His work continues to shape the future of clinical practice and inspires generations of researchers and practitioners. This prestigious honour reflects the profound impact of his scholarship and leadership within the university and beyond. We celebrate this milestone and extend our deepest appreciation for Professor Glasziou's remarkable legacy.



From L to R: Professor Nick Zwar (Executive Dean: Faculty of Health Sciences and Medicine), Professor Paul Glasziou AO, Professor Tim Brailsford (Vice Chancellor)

Professor Tammy Hoffmann OAM

Australia's top research funding body has presented one of its highest awards to Bond University researcher Professor Tammy Hoffmann OAM. The National Health and Medical Research Council (NHMRC) honoured Professor Hoffmann with the 2024 NHMRC Elizabeth Blackburn Investigator Grant Award for Leadership in Health Services Research. The award recognises Professor Hoffmann OAM as the highest-ranked female applicant for an Investigator Grant (Leadership) in the Health Services Research pillar for 2024.



Professor Tammy Hoffmann OAM with the Chief Executive Officer of the NHMRC, Professor Steve Wesselingh FRACP FAHMS

World's Top researchers list - Stanford University / Elsevier

WORLD'S TOP 1%



The annual Clarivate Highly Cited Researchers List recognises the world's most influential researchers whose work ranks in the top 1% of citations for their field. IEBH was proud to congratulate **Professor Paul Glasziou AO** for being recognised on this exclusive list for the eighth time and **Professor Tammy Hoffman** for her inclusion in the 2025 edition. They join 311 academics from Australia, which ranks 5th globally for most highly cited researchers—behind the US, China, UK, and Germany. The 2025 list recognises 6,868 researchers from across the world.

WORLD'S TOP 2%

Stanford University/Elsevier's "World's Top 2% Scientists" list is a prestigious ranking that celebrates the most influential researchers across various scientific disciplines. This list is a valuable resource for identifying global scientific leaders. We are proud to announce that the following Institute staff have been recognised in the 2025 edition:

CAREER AND SINGLE YEAR

- Professor Julie Redfern AM
- Professor Tammy Hoffmann OAM
- Associate Professor Mark Jones
- Professor Paul Glasziou AO (Emeritus Professor)
- Associate Professor Rae Thomas (Honorary Adjunct)
- Assistant Professor Ray Moynihan (Honorary Adjunct)

SINGLE YEAR

- Professor Usman Iqbal
- Associate Professor Loai Albarqouni
- Associate Professor Elaine Beller
- Assistant Professor Sharon Sanders
- Mr Justin Clark
- Assistant Professor Zoe Michaleff
- Assistant Professor Anna Scott



Bond University Awards

2025 VICE-CHANCELLOR'S AWARDS FOR RESEARCH EXCELLENCE:



DR MICHELLE GUPPY
Winner | Best PhD Thesis



DR OYUKA BYAMBASUREN
Finalist & winner | HSM Executive Dean's
Award for Early Career Research Excellence

BOND UNIVERSITY 3MT COMPETITION:



HANNAH GREENWOOD
People's Choice Award

2025 VICE-CHANCELLOR'S AWARDS FOR PROFESSIONAL STAFF:



TIFFANY ATKINS
Finalist | Bond Rising Star Award



ONE OF OUR RISING STARS – BARBARA HALE SCHOLARSHIP RECIPIENT – PHD CANDIDATE

Hannah Greenwood



One of IEBH's outstanding PhD students, Hannah Greenwood, was awarded the Australian Graduate Women (AGW) prestigious Barbara Hale Fellowship. These fellowships are designed to support second year or later doctoral students in extending the scope of their PhD program. Only two students receive this fellowship annually.

In her fellowship, Hannah will work with the First Nations Health group at Bond University to explore Indigenous considerations for using potassium-enriched salt for cardiovascular health. She will also receive additional training in collaborating with Indigenous methodologies.

The Barbara Hale Fellowship will enable her to extend IEBH's previous work into the long-term effect of potassium-enriched salt for cardiovascular outcomes.

Hannah led an IEBH systematic review and meta-analysis of 16 randomised trials (35,000+ participants) in 2024.* The study demonstrated that replacing regular salt with potassium-enriched salt lowers blood pressure and reduces cardiovascular mortality. These findings have directly shaped major clinical guidelines: the 2025 American College of Cardiology/American Heart Association blood pressure guidelines now recommend potassium-enriched salt as a preventive and therapeutic strategy, citing our review as key evidence. The RACGP HANDI guideline has also adopted this recommendation, reflecting strong policy influence at both national and international levels.

This research shows that a simple, low-cost dietary change can translate into meaningful improvements in population health. Potassium-enriched salt is a practical, scalable intervention that can be adopted in routine cooking without requiring new medications or complex health-system changes. With evidence of reduced mortality and no clear increase in serious harms, it represents a promising non-drug strategy—particularly for people at elevated cardiovascular risk. Published in *Annals of Internal Medicine*, this work provides robust evidence to guide practice, strengthen public health policy and support broader implementation to prevent cardiovascular events and save lives worldwide.

**Greenwood H, Barnes K, Clark J, Ball L, and Albarqouni L. Long-term effect of salt substitution for cardiovascular outcomes: A systematic review and meta-analysis. Annals of Internal Medicine 2024;10.7326/M23-2626*

Events and Other Activities

Throughout 2025, our team actively engaged in a diverse range of professional development and outreach activities that strengthened our research capacity, expanded our networks, and fostered collaboration across the sector. From attending national and international conferences to hosting and participating in workshops, webinars, and networking events, these engagements provided valuable opportunities to share knowledge, build partnerships, and stay at the forefront of innovation in healthcare research.

STRATEGIC PLANNING DAY

On 28 and 29 April 2025, our team came together for a two-day strategic planning retreat to lay the groundwork for the Institute’s 2026–2030 strategy. The program included a series of team-building activities, collaborative goal setting using the SMART framework, and forward-thinking exercises such as blue-sky ideation. Together, we reflected on our core research pillars and explored innovative pathways to guide our future direction and amplify our impact.



SOLVE RETREAT

Driving National Change in Cardiac Rehabilitation

On 29–30 May 2025, we hosted the SOLVE-CHD Australian Cardiac Rehabilitation Quality Initiative Retreat, bringing together over 25 researchers, clinicians, PhD candidates, and representatives from key organisations including the Heart Foundation, ACRA, and HeartBeat Victoria. Through interactive workshops and collaborative planning, participants defined national priorities and practical next steps to improve the quality, consistency, and accessibility of cardiac rehabilitation services. The retreat fostered a strong sense of unity and momentum toward ensuring equitable, high-quality heart care for all Australians.



WORLD HEART DAY

The world premiere of the BBC Storyworks series *Beats of Change*, showcasing the impact of Professor Julie Redfern AM's research, was held at Gold Coast University Hospital on 29 September 2025. Timed to coincide with World Heart Day, the event spotlighted the lived experiences of Gold Coast residents and the transformative potential of life-long approaches to cardiac rehabilitation. Attendees, including clinicians, researchers, and community members living with cardiovascular disease, gained insights into SOLVE-CHD, a multidisciplinary research initiative led by Professor Redfern and supported by an NHMRC Synergy Grant.



AI IN HEALTHCARE: FROM PROMISE TO PRACTICE

Artificial Intelligence is increasingly recognised as a transformative force in healthcare, offering opportunities to enhance diagnostics, personalise care, and improve system efficiency. However, its integration into clinical practice presents complex challenges, including concerns around data privacy, algorithmic bias, regulatory frameworks, and workforce preparedness.

In a thought-provoking lecture, held at Bond University on the 2nd October 2025, Professor Usman Iqbal explored both the promise and pitfalls of AI in healthcare, drawing on local and international examples. He examined the socio-technical realities of implementation, ethical and legal considerations, and emerging risks such as automation bias and data inequities. The presentation also outlined pathways for responsible, scalable, and inclusive AI adoption, offering a balanced, evidence-informed perspective on translating innovation into real-world impact.





LAUNCH OF THE WORLD HEART FOUNDATION'S CARDIAC REHABILITATION ROADMAP AT THE WORLD CONGRESS OF CARDIOLOGY

Professor Julie Redfern AM was a lead author of the World Heart Foundation's Cardiac Rehabilitation Roadmap (CR Roadmap) which was launched at the World Congress of Cardiology held from Friday, 29 August – Monday, 1 September 2025 in Madrid, Spain. The Congress was attended by over 30,000 cardiovascular professionals from 150+ countries. The CR Roadmap is a strategic framework to expand access and equity in cardiac rehabilitation globally through key strategies such as:

- Opt-out referrals and bedside endorsements to boost enrolment
- Hybrid and tele-rehabilitation models for flexibility and reach
- Reframing cardiac rehabilitation as lifelong cardiovascular care
- Investment in multidisciplinary team training and online curricula
- Integration into chronic disease pathways and national health strategies
- Emphasis on equity, digital literacy, and data-driven improvement

**ESC Congress
2025 Madrid**

TOGETHER WITH
**World Congress of
Cardiology**

29 August to 1 September



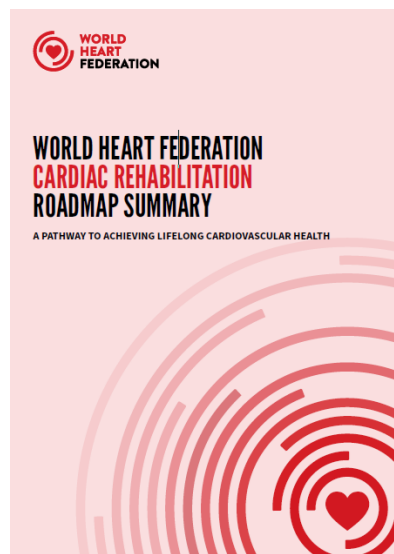
#ESCCongress #WCCardio

**Cardiology
Beyond Borders**
Spotlight on Global Health



**WORLD HEART FEDERATION
CARDIAC REHABILITATION
ROADMAP SUMMARY**

A PATHWAY TO ACHIEVING LIFELONG CARDIOVASCULAR HEALTH





CONFERENCES IEBH TEAM PRESENTED AT IN 2025

International

- Pandemic Evidence Collaboration, Banff, Canada- invited speakers
- Asia-Pacific Network for Evidence Analysis, Synthesis and Translation (APN-EAST) China – plenary on systematic review automation
- World Congress of Cardiology & ESC Congress, Madrid, Spain – invited speakers
- World Heart Federation Summit, Geneva, Switzerland
- JBI Colloquium – automation tools and GenAI-assisted screening, India – invited presentation
- General practice Research on Infection Network (GRIN), Würzburg, Germany – invited speaker & Chair
- Cochrane's Leadership Meeting, Lisbon, Portugal
- European Congress on Addiction and Psychiatry, Lisboa, Portugal
- World Organization of Family Doctors, WONCA World Conference, Lisbon, Portugal – invited presentation
- Medical Informatics Europe (MIE2025) Glasgow, Scotland
- International Digital Public Health Conference (DPH2025), Madeira, Portugal
- MEDINFO 2025, Taipei, Taiwan
- European Congress on Addiction and Psychiatry (online)
- Preventing Over-Diagnosis PODC, Oxford, UK
- Mobilizing computable biomedical knowledge (MCBK) 2025 (online)
- Medical Informatics Europe Conference (MIE) 2025 Glasgow, Scotland
- 8th International Conference on Patient Safety at AKUH, Karachi, Pakistan

National

- CSANZ 2025, Brisbane
- Australasian Society of Lifestyle Medicine (ASLM), Gold Coast - multiple attendees and speakers
- Australian Health Economics Society, Canberra
- Digital Health Festival, Melbourne
- AIMOS Conference, Sydney
- Long COVID 2025 conference, Melbourne
- Australian Shared Decision Making Symposium, Gold Coast - multiple attendees and speakers
- Australasian Association of Academic Primary Care, Annual Research Conference, Geelong
- NCNED Conference on ME/CFS and Long COVID, Tweed Heads - presenter and posters
- The Australasian College for Emergency Medicine (ACEM) ASM, Gold Coast - presenter



VISITORS

Nashit Chowdhury

The Institute was pleased to host University of Calgary PhD candidate **Nashit Chowdhury** through **The Pandemic EVIDENCE Collaboration** support. His visit focused on learning about our TERA suite of tools for accelerating evidence synthesis. During his time with us, Nashit met with our resident TERA experts, discussed his research project, and received valuable feedback and troubleshooting support.

Professor Rod Taylor

On 18 August 2025, the Institute welcomed international visitor **Professor Rod Taylor**, Professor of Population Health Research at the University of Glasgow's School of Health & Wellbeing. In his lecture, "*Tackling Multimorbidity – Challenges of Trial Design*," Professor Taylor explored the complexities of designing clinical trials for patients with multiple chronic conditions. Drawing on his extensive experience in public health research and programmes like REACH-HF, he highlighted innovative approaches to rehabilitation and care delivery.



NETWORKING EVENTS

Allied Health Research Networking Event



On Thursday 24 July, the Gold Coast Hospital and Health Service hosted the **Allied Health Research Networking Event**, bringing together a vibrant community of clinicians, researchers, and academic partners to celebrate and strengthen the region's allied health research culture. Held at the Gold Coast Hospital, the event showcased the breadth and depth of research being undertaken across disciplines including physiotherapy, dietetics, speech pathology, occupational therapy, psychology, and more. Researchers from HSM had the opportunity to hear about GCH based research projects and learn about high-value models of care that are transforming service delivery.

Gold Coast Hospital and Health Services Collaboration Scheme

IEBH and Bond University were proud to support the **Gold Coast Health Collaborative Research Grant Scheme (RGS) 2025** a competitive funding initiative aimed at advancing high-quality, collaborative health research. The scheme supports innovative projects that improve patient care and health service delivery, foster partnerships between Gold Coast Health, academic institutions, industry, and community organisations, and build research capacity—particularly for early career researchers. Funding is available through two streams: Capacity and Collaboration Building Grants (up to \$25,000 per project) for early career researchers initiating or enhancing collaborative research, and Major Research Project Grants (up to \$150,000 over two years) for both established and early career researchers, requiring a co-lead Chief Investigator from a partner academic institution. Collaborating universities include Griffith University, Bond University, and Southern Cross University. In September 2025, IEBH hosted a Pitch Session in support of building connections between clinical staff and Bond University to explore partnerships and develop applications to the collaborative grant scheme.

WORKSHOPS & WEBINARS

Accelerating Systematic Reviews with Automation Tools – Workshop Series

During May and June 2025, we hosted a series of online workshops focused on streamlining the systematic review process using automation tools. A total of 45 attendees—including clinicians, researchers, students, and information professionals—joined us to learn from experts who have completed over 150 systematic reviews in vastly shortened timeframes. The five-part series covered how to do the key stages of a review, from planning and search design to screening, data extraction, assessing risk of bias, and using GRADE most efficiently. These interactive sessions equipped participants with cutting-edge techniques to enhance accuracy, efficiency, and confidence in conducting systematic reviews.

Psychiatry Trainee Workshop

Staff from the Institute and Gold Coast University Hospital conducted a workshop for 70 trainee psychiatrists in July. The workshop focused on developing participants' critical appraisal skills and ability to interpret the results of randomised trials using current clinically relevant research papers.

The Evidence Review Accelerator (TERA) - Webinar Series

During 2025, the Institute hosted a series of five interactive webinars showcasing the capabilities of the Evidence Review Accelerator (TERA) — a powerful suite of automation tools designed to streamline the systematic review process. With over 300 registrations from participants across 20+ countries, the webinars attracted a global audience of clinicians, researchers, students, and information professionals. These webinars offered practical insights into how automation can enhance accuracy, reduce workload, and accelerate timelines in evidence synthesis. Enthusiastic engagement and international reach reflect growing interest in innovative tools that support high-quality, efficient research.



Research Outputs

The Institute's 2025 research output reflects a rich and diverse array of scholarly contributions, including peer-reviewed articles, book chapters, government reports, and opinion pieces. These works not only advance academic knowledge but also inform policy, shape community engagement, and foster innovation across disciplines. Many publications actively contribute to the United Nations Sustainable Development Goals (SDGs), addressing pressing global challenges such as health equity, climate resilience, and inclusive education.



**137 PUBLICATIONS,
ARTICLES & LETTERS**



**54% INTERNATIONAL
COLLABORATIONS**



**80,000+
CITATIONS**

2025 PUBLICATIONS

1. **Hoffmann TC**, McCaffery KJ, Légaré F, **Bakhit M**, Tracy M. From words to action: time for Australia to take shared decision making implementation seriously. *Medical Journal of Australia*. 2025;223(8):391-396.
2. Ashley H, Gough S, Darlington C, **Clark J**, Mosley C. Hitting the target and missing the point? A BEME systematic review of evidence regarding the efficacy of statutory and mandatory training in health and care: BEME Guide No. 87. *Medical Teacher*. 2025;47(2):195-204.
3. Anker SD, Ji L, Kindel T, Coats AJS, Ojji D, Barragan AP, Rossing P, Zieroth S, Ahmad S, **Redfern J**. iCARDIO Alliance Global Implementation Guidelines for the Management of Obesity 2025 Focus on Prevention and Treatment of Cardiometabolic Disease. *Global Cardiology*. 2025;3(3):1-26.
4. Chen YH, Lin CH, Fan CH, Long AJ, Scholl J, Kao YP, **Iqbal U**, Li YCJ. Machine Learning Approach to Identifying Wrong-Site Surgeries Using Centers for Medicare and Medicaid Services Dataset: Development and Validation Study. *JMIR Formative Research*. 2025;9:1-10. e68436.
5. **Hoffmann TC**, Gibson E. An international environmental scan of the scope and characteristics of patient decision aids which are freely available online. *Patient Education and Counseling*. 2025;130:1-6. 108484.
6. Ibounig T, Rämö L, Haas R, **Jones M**, Järvinen TLN, Taimela S, Docking S, **Sanders S**, Buchbinder R. Imaging abnormalities of the acromioclavicular joint and subacromial space are common in asymptomatic shoulders: a systematic review. *Journal of Orthopaedic Surgery and Research*. 2025;20(1):1-17.
7. Hafiz N, Hyun K, Tu Q, Knight A, Chow CK, Hespe C, Briffa, T, Gallagher R, Reid CM, Hare DL, Zwar N, Woodward M, Jan S, Atkins ER, Laba T-L, Halcomb E, Johnson T, Manandi D, Usherwood T, **Redfern J**. Implementation of a data-driven quality improvement program in primary care for patients with coronary heart disease: a mixed methods evaluation of acceptability, satisfaction, barriers and enablers. *Australian Journal of Primary Health*. 2025;31(1):1-14.
8. **Guppy M**, Bowles EJ, **Glasziou P**, Doust J. Chronic kidney disease and the alternative labels used by GPs in Australia: a qualitative interview study. *BJGP Open*. 2025;15;9(1):1-8.
9. Lorzadeh E, Weston-Green K, Roodenrys S, **do Rosario V**, Kent K, Charlton K. The effect of anthocyanins on cognition: a systematic review and meta-analysis of randomized clinical trial studies in cognitively impaired and healthy adults. *Current Nutrition Reports*. 2025;14(1):1-36. 23.
10. Hapgood G, Hill K, Okano S, Abro E, Looke D, Kennedy G, Pavilion G, Van Kuilenburg R, Geary A, Joubert W, Eastgate M, **Jones M**, Mollie P. Catheter-related thrombosis in adults with cancer: a secondary analysis of a prospective randomized controlled trial. *Journal of Thrombosis and Haemostasis*. 2025;23(2):627-634.

11. Hareer LW, Lau YY, Mole F, Reidlinger DP, O'Neill HM, Mayr HL, **Greenwood H, Albarqouni L**. The effectiveness of the Mediterranean Diet for primary and secondary prevention of cardiovascular disease: An umbrella review. *Nutrition and Dietetics*. 2025;82(1):8-41.
12. Jolliffe L, Lannin NA, Larcombe S, Major B, **Hoffmann T**, Lynch E. Training and education provided to local change champions within implementation trials: a rapid systematic review. *Implementation Science*. 2025;20(1):1-40. 8.
13. Phillips WR, Sturgiss E, **Glasziou P**, olde Hartman TC, Orkin AM, Prathivadi P, Reeve J, Russell GM, van Weel C. 改进基本医疗（初级保健）研究报告内容的CRISP 共识声明. *Chinese General Practice*. 2025;28(4):385-392.
14. Kahan BC, Juszczak E, **Beller E**, Birchenall M, Chan AW, Hall S, Little P, Fletcher J, Golub RM, Goulao B, Hopewell S, Islam N, Zwarenstein M, Elbourne D, Montgomery A. Guidance for protocol content and reporting of factorial randomised trials: explanation and elaboration of the CONSORT 2010 and SPIRIT 2013 extensions. *British Medical Journal*. 2025;388:1-21.
15. **Redfern J**, Li E, Maiorana A, Zecchin R, Hyun KK, Shi W, Weddell J, Liang S, Candelaria D, Briffa T, Bauman A, Figtree G, Hackett ML, Law CK, Tu Q, Lindley R, Gallagher R. Heart2Heart: a digital peer support programme for people with heart disease: protocol for a community-based, investigator-blinded randomised controlled trial conducted in Australia. *BMJ Open*. 2025;15(2):1-8.
16. Hall SS, Juszczak E, Birchenall M, Elbourne D, **Beller E**, Chan AW, Little P, Montgomery AA, Kahan BC. Mixed-methods study to develop extensions to the SPIRIT and CONSORT statements for factorial randomised trials: the Reporting Factorial Trials (RAFT) study. *BMJ Open*. 2025;15(2):1-10. e082917.
17. Antares JB, **Jones MA**, Chak NTN, Chi Y, Li H, Li M, Chan EYW, Chen TMK, Lee CMY, Urquhart DM. Efficacy of non-surgical, non-pharmacological treatments for congenital muscular torticollis: a systematic review and meta-analysis. *BMC Musculoskeletal Disorders*. 2025;26(1):1-16. 178.
18. Moro C, Phelps C, Veer V, **Jones MA, Glasziou PP, Clark J**, Tikkinen KAO, Scott A. Reply to Arun Joshi, Lazaros Tzelves, Zafer Tandogdu, Patrick Juliebø-Jones, and Bhaskar Somani's Letter to the Editor re: Christian Moro, Charlotte Phelps, Vineesha Veer, et al. Cranberry Juice, Cranberry Tablets, or Liquid Therapies for Urinary Tract Infection: A Systematic Review and Network Meta-analysis. *Eur Urol Focus*. In press. <https://doi.org/10.1016/j.euf.2024.07.002>. *European Urology Focus*. 2025;11(2):394.
19. Vuong K, Barraclough F, **Bakhit M**, Magin PJ, Stephen C. Interprofessional collaboration in general practice. *Journal of Primary Health Care*. 2025 (Online first doi: 10.1071/HC24160).
20. Subhaharan D, Kakkadasam Ramaswamy P, **Jones M**, John S. Implementing education and key performance measures improve and sustain quality of endoscopic assessment in patients with Barrett's oesophagus. *Endoscopy International Open*. 2025;13:a25420618.
21. Stehlik P, Withers C, Bourke R, Barnett AG, **Brandenburg C**, Noble C, Bannach-Brown A, Keijzers GBJM, Scott IA, **Glasziou PP**, Veysey E, Mickan SM, Morgan M, Joshi H, Forrest KAT, Campbell TG, Henry DA. Mandatory research projects during medical specialist training in Australia and New Zealand: a survey of trainees' experiences and reports. *Medical Journal of Australia*. 2025;222(5):231-239.
22. Wang Y, Keitz S, Briel M, **Glasziou P**, Brignardello-Petersen R, Siemieniuk RAC, Zeraatkar D, Akl EA, Armijo-Olivo S, Bassler D, Gamble C, Gluud LL, Hutton JL, Letelier LM, Ravaud P, Schulz KF, Torgerson DJ, Guyatt GH. Development of ROBUST-RCT: Risk Of Bias instrument for Use in SysTematic reviews-for Randomised Controlled Trials. *BMJ (Clinical research ed.)*. 2025;388:e081199.
23. Hopewell S, Chan AW, Collins GS, Hróbjartsson A, Moher D, Schulz KF, Tunn R, Aggarwal R, Berkwits M, Berlin JA, Bhandari N, Butcher NJ, Campbell MK, Chidebe RCW, Elbourne D, Farmer A, Fergusson DA, Golub RM, Goodman SN, **Hoffmann TC**, Ioannidis JPA, Kahan BC, Knowles RL, Lamb SE, Lewis S, Loder E, Offringa M, Ravaud P, Richards DP, Rockhold FW, Schriger DL, Siegried NL, Staniszewska S, Taylor RS, Thabane L, Torgerson D, Vohra S, White IR, Boutron I. CONSORT 2025 statement: Updated guideline for reporting randomised trials. *PLoS Medicine*. 2025;22(4):e1004587.
24. Cho Y, McKay MJ, Zadro JR, **Hoffmann T**, Maher CG, Harris I, Stanford R, Ferreira ML, Buchbinder R, Han CS, Ferreira GE. Development of a patient decision aid for people with chronic low back pain

- and degenerative disc disease considering lumbar fusion: A mixed-methods study. *Musculoskeletal Science and Practice*. 2025;76:103261.
25. Ashworth NL, Bland JDP, Chapman KM, Tardif G, **Albarqouni L**, Nagendran A. Inyección local de corticoides frente a placebo para el síndrome del túnel carpiano: una revisión Cochrane. *Emergencias*. 2025;37(2):143-144.
 26. Solia D, **Albarqouni L**, Stehlik P, Conroy A, Thomas R. Parent concerns prior to an assessment of autism spectrum disorder: A systematic review. *Autism*. 2025;29(4):838-849.
 27. Chan AW, Boutron I, Hopewell S, Moher D, Schulz KF, Collins GS, Tunn R, Aggarwal R, Berkwits M, Berlin JA, Bhandari N, Butcher NJ, Campbell MK, Chidebe RCW, Elbourne DR, Farmer AJ, Fergusson DA, Golub RM, Goodman SN, **Hoffmann TC**, Ioannidis JPA, Kahan BC, Knowles RL, Lamb SE, Lewis S, Loder E, Offringa M, Ravaud P, Richards DP, Rockhold FW, Schriger DL, Siegfried NL, Staniszewska S, Taylor RS, Thabane L, Torgerson DJ, Vohra S, White IR, Hróbjartsson A. SPIRIT 2025 statement: Updated guideline for protocols of randomised trials. *PLoS Medicine*. 2025;22:e1004589.
 28. Turner A, van Driel ML, Mitchell BL, Davis JS, Tapley A, Holliday E, Dizon J, **Glasziou P**, **Bakhit M**, Mulquiney K, Davey A, Fisher K, Baillie EJ, Fielding A, Moad D, Dallas A, Magin P. Changing the antibiotic prescribing of Australian general practice registrars' for acute respiratory tract infections: A non-randomized controlled trial. *Family Practice*. 2025;42(2):1-10.
 29. Prazeres F, Jamouille M, Kareli A, Collins C, Móczár C, Wong MC, Bhattacharya S, Vinker S, Low LL, Abdul-Razak S, Brooke J, Verjee MA, Yaman H, Prasad P, Søndergaard J, Pond D, Hughes L, Cihan FG, Tsimitsiou Z, Harrison C, **Albarqouni L**, Yuan B, Lee YK, Van Royen P, Govender I, Arnetz BB, O'Donnell CA. Delphi definition of general practice/family medicine specialty for a post-COVID world: in-person and remote care delivery: in-person and remote care delivery. *Family Practice*. 2025;42(2):1-6.
 30. **Iqbal U**, Lachman P, Phan P. From compliance to excellence: how can ISO 13485 standards transform quality, safety, and innovation in medical devices? *International Journal for Quality in Health Care*. 2025;37(2):mzaf032.
 31. Alharbi L, AteeqAllah L, Beklal W, **Ali S**. Magnitude and Characteristics of Adverse Drug Events in Saudi Arabia: A Systematic Review. *Saudi Journal of Medicine and Medical Sciences*. 2025;13(2):79-89.
 32. Brieger D, Cullen L, Briffa T, Zaman S, Scott I, Papendick C, Bardsley K, Baumann A, Bennett AS, Clark RA, Edelman JJ, Inglis SC, Kuhn L, Livori A, **Redfern J**, Schneider H, Stewart J, Thomas L, Wing-Lun E, Zhang L, Ho E, Matthews S. National Heart Foundation of Australia & Cardiac Society of Australia and New Zealand: Comprehensive Australian Clinical Guideline for Diagnosing and Managing Acute Coronary Syndromes 2025. *Heart, Lung and Circulation*. 2025;34(4):309-397.
 33. Lau ECH, Rajput VK, Hunter I, Florez-Arango JF, Ranatunga P, Veil KD, Kulatunga G, Gogia S, Kuziemy C, Ito M, **Iqbal U**, John S, Iyengar S, Ramachandran A, Basu A. Telehealth and Precision Prevention: Bridging the Gap for Individualised Health Strategies. *Yearbook of medical informatics*. 2025;33(1):64-69.
 34. Hopewell S, Chan AW, Collins GS, Hróbjartsson A, Moher D, Schulz KK, Tunn R, Aggarwal R, Berkwits M, Berlin JA, Bhandari N, Butcher NJ, Campbell MK, Chidebe RCW, Elbourne D, Farmer A, Fergusson DA, Golub RM, Goodman SN, **Hoffmann TC**, Ioannidis JPA, Kahan BC, Knowles RL, Lamb SE, Lewis S, Loder E, Offringa M, Ravaud P, Richards DP, Rockhold FW, Schriger DL, Siegfried NL, Staniszewska S, Taylor RS, Thabane L, Torgerson D, Vohra S, White IR, Boutron I. CONSORT 2025 explanation and elaboration: updated guideline for reporting randomised trials. *British Medical Journal*. 2025;389:1-61.
 35. Hopewell S, Chan AW, Collins GS, Hróbjartsson A, Moher D, Schulz K, Tunn R, Aggarwal R, Berkwits M, Berlin JA, Bhandari N, Butcher NJ, Campbell MK, Chidebe RCW, Elbourne D, Farmer A, Fergusson DA, Golub RM, Goodman SN, **Hoffmann TC**, Ioannidis JPA, Kahan BC, Knowles RL, Lamb SE, Lewis S, Loder E, Offringa M, Ravaud P, Richards DP, Rockhold FW, Schriger DL, Siegfried NL, Staniszewska S, Taylor RS, Thabane L, Torgerson D, Vohra S, White IR, Boutron I. CONSORT 2025 statement: updated guideline for reporting randomised trials. *British Medical Journal*. 2025;389:e081123.
 36. May N, Fitzgerald Z, Broyd S, **do Rosario V**, Roodenrys S, Blioka V, Thomas S, Potter J, George J, Weston-Green K, Charlton KE. Queen garnet plum juice supplementation does not provide

- additional cognitive benefits over a group-based memory program in older adults with mild cognitive impairment: A randomized clinical trial. 2025;138:107-121.
37. Bar L, Brandis S, Wenke R, **Marks D**. Adherence to Compression Stockings for Venous Leg Ulcer Prevention: A Pilot Randomised Controlled Trial and Health Economic Analysis, Evaluating a New Multidimensional Tool (PAMCAI). *International Wound Journal*. 2025;22(4):1-14.
 38. Arab-Zozani M, **Albarqouni L**. Editorial: Medical overuse and underuse in healthcare systems. *Frontiers in Public Health*. 2025;13:1-3. 1590328.
 39. VITALITY Collaborative Research Network, Xu C, Fan S, Tian Y, Liu F, Furuya-Kanamori L, **Clark J**, Zhang C, Li S, Lin L, Chu H, Li S, Golder S, Loke Y, Vohra S, **Glasziou P**, Doi SA, Liu H. Investigating the impact of trial retractions on the healthcare evidence ecosystem (VITALITY Study I): retrospective cohort study. *BMJ (Clinical research ed.)*. 2025;389:1-13.
 40. Weddell J, Shi W, **Redfern J**, Buckley T, Gallagher R. Effectiveness of coronary heart disease peer support interventions: a systematic review and meta-analysis. *European Journal of Preventive Cardiology*. 2025;zwaf241.
 41. **Clark J**, Barton BL, **Albarqouni L**, **Byambasuren O**, Jowsey T, Keogh JW, Liang T, Moro C, O'Neill HM, **Jones M**. Generative artificial intelligence use in evidence synthesis: A systematic review. *Research Synthesis Methods*. 2025;16(4):601-619.
 42. Hróbjartsson A, Boutron I, Hopewell S, Moher D, Schulz KF, Collins GS, Tunn R, Aggarwal R, Berkwits M, Berlin JA, Bhandari N, Butcher NJ, Campbell MK, Chidebe RCW, Elbourne DR, Farmer AJ, Fergusson DA, Golub RM, Goodman SN, **Hoffmann TC**, Ioannidis JPA, Kahan BC, Knowles RL, Lamb SE, Lewis S, Loder E, Offringa M, Ravaud P, Richards DP, Rockhold FW, Schriger DL, Siegfried NL, Staniszewska S, Taylor RS, Thabane L, Torgerson DJ, Vohra S, White IR, Chan A-W. SPIRIT 2025 explanation and elaboration: updated guideline for protocols of randomised trials. *British Medical Journal*. 2025;389:e081477.
 43. Chan AW, Boutron I, Hopewell S, Moher D, Schulz KF, Collins GS, Tunn R, Aggarwal R, Berkwits M, Berlin JA, Bhandari N, Butcher NJ, Campbell MK, Chidebe RCW, Elbourne DR, Farmer AJ, Fergusson DA, Golub RM, Goodman SN, **Hoffmann TC**, Ioannidis JPA, Kahan BC, Knowles RL, Lamb SE, Lewis S, Loder E, Offringa M, Ravaud P, Richards DP, Rockhold FW, Schriger DL, Siegfried NL, Staniszewska S, Taylor RS, Thabane L, Torgerson DJ, Vohra S, White IR, Hróbjartsson A. SPIRIT 2025 statement: Updated guideline for protocols of randomised trials. *PLoS Medicine*. 2025;22:1-15.
 44. Chan AW, Boutron I, Hopewell S, Moher D, Schulz KF, Collins GS, Tunn R, Aggarwal R, Berkwits M, Berlin JA, Bhandari N, Butcher NJ, Campbell MK, Chidebe RCW, Elbourne DR, Farmer AJ, Fergusson DA, Golub RM, Goodman SN, **Hoffmann TC**, Ioannidis JPA, Kahan BC, Knowles RL, Lamb SE, Lewis S, Loder E, Offringa M, Ravaud P, Richards DP, Rockhold FW, Schriger DL, Siegfried NL, Staniszewska S, Taylor RS, Thabane L, Torgerson DJ, Vohra S, White IR, Hróbjartsson A. SPIRIT 2025 Statement: Updated Guideline for Protocols of Randomized Trials. *JAMA*. 2025. doi: 10.1001/jama.2025.4486
 45. Munot S, **Redfern J**, Bray JE, Angell B, Coggins A, Denniss AR, Jennings G, Khanlari S, Koor, P, Kumar S, Lai K, Marschner S, Middleton PM, Oppermann I, Rock Z, Semsarian C, Vukasovic M, Bauman A, Chow CK. FirstCPR: A pragmatic community organisation-based cluster randomised trial to increase community training and preparedness to respond to out-of-hospital cardiac arrest. *Resuscitation Plus*. 2025;23:1-10.
 46. **Iqbal U**, Tanweer A, Rahmanti AR, Greenfield D, Lee LTJ, Li YCJ. Impact of large language model (ChatGPT) in healthcare: an umbrella review and evidence synthesis. *Journal of Biomedical Science*. 2025;32(1):1-19.
 47. Gauci S, Chaselings GK, Cartledge S, West ML, Zhang L, Zwack C, Hollings M, Briffa T, Gallagher R, **Redfern J**, O'Neil A. Psychosocial Well-Being and Healthy Eating in Cardiac Rehabilitation: A National Survey of Cardiac Rehabilitation Practitioners Self-Reported Practices. *Heart, Lung and Circulation*. 2025;34(5):506-514.
 48. Kha R, Min H, Marschner S, Mahendran S, Thiagalingam A, Poulter R, **Redfern J**, Brieger DB, Thompson PL, Hillis GS, Collins N, Shetty P, McGrady M, Hamilton-Craig C, Kangaharan N, Atherton JJ, Maiorana A, Klimis H, Juergens CP, Chow CK. Determinants of medication adherence in people with acute coronary syndrome: A secondary analysis of a randomised clinical trial. *Heart*. 2025;111(10):462-470.

49. Filbay SR, Rooney J, **Hoffmann T**, Edib Z, Teo PL, Hinman RS, Bennell KL. Treatment Decision-Making for Anterior Cruciate Ligament Rupture from the Perspective of Physical Therapists in Australia: A Mixed Methods Study. *Physical Therapy*. 2025;105(5):1-12.
50. Hopewell S, Chan AW, Collins GS, Hróbjartsson A, Moher D, Schulz KF, Tunn R, Aggarwal R, Berkwits M, Berlin JA, Bhandari N, Butcher NJ, Campbell MK, Chidebe RCW, Elbourne D, Farmer A, Fergusson DA, Golub RM, Goodman SN, **Hoffmann TC**, Ioannidis JPA, Kahan BC, Knowles RL, Lamb SE, Lewis S, Loder E, Offringa M, Ravaud P, Richards DP, Rockhold FW, Schriger DL, Siegfried NL, Staniszewska S, Taylor RS, Thabane L, Torgerson D, Vohra S, White IR, Boutron I. CONSORT 2025 statement: updated guideline for reporting randomised trials. *The Lancet*. 2025;405(10489):1633-1640.
51. Amada S, Ningrum DNA, Junaidi L, **Iqbal U**. Risk Factors Of Mortality Among Hajj Pilgrims In SOC 1444 H Group. *Unnes Journal of Public Health*. 2025;14(1):69-78.
52. Onslow M, Dyer B, **Jones M**, Lowe R, O'Brian S, Menzies R. A Mediation Model of Social Anxiety Development During Early Childhood Stuttering. *Journal of speech, language, and hearing research*. *Journal of Speech, Language, and Hearing Research*. 2025;68(5):2339-2347.
53. Fischer K, **Jones M**, O'Neill HM. Prevalence of Intolerance to Amines and Salicylates in Individuals with Atopic Dermatitis: A Systematic Review and Meta-Analysis. *Nutrients*. 2025;17(10):1-15. 1628.
54. Partridge SR, Mandoh M, Todd AR, Wardak S, Mautner D, Yan F, Phongsavan P, **Redfern J**, Cheng HL, Lee A, Fang J, Bower M, Donohoe-Bales A, Mihrshahi S, Raeside R. Participation their way: a mixed methods study on engaging Australian adolescents in non-communicable disease prevention. *BMC Public Health*. 2025;25(1):1-18.
55. Bam K, Lin B, Olaiya MT, Cadilhac DA, **Redfern J**, Nelson MR, Sanders, LM, Andrew, NE, Sundararajan, V, Murphy, L, Kilkenny, MF. Quality indicators for lifestyle or behavioural management for the primary prevention of cardiovascular disease in primary care: a systematic review. *British Journal of General Practice Open*. 2025;9(4): BJJGPO.2025.0018.
56. Bowrin P, Bowrin E, **Iqbal U**, Sanna M. Benefits of RENEW: A Faith-Infused, Game-Based Social-Emotional Intervention: Evidence from a Pilot Cluster Randomized Crossover Trial on Primary School Children in Taiwan. *Journal of Religion and Health*. 2025;64(3):1594-1606.
57. Hopewell S, Chan AW, Collins GS, Hróbjartsson A, Moher D, Schulz KF, Tunn R, Aggarwal R, Berkwits M, Berlin JA, Bhandari N, Butcher NJ, Campbell MK, Chidebe RCW, Elbourne D, Farmer A, Fergusson DA, Golub RM, Goodman SN, **Hoffmann TC**, Ioannidis JPA, Kahan BC, Knowles RL, Lamb SE, Lewis S, Loder E, Offringa M, Ravaud P, Richards DP, Rockhold FW, Schriger DL, Siegfried NL, Staniszewska S, Taylor RS, Thabane L, Torgerson D, Vohra S, White IR, Boutron I. CONSORT 2025 statement: updated guideline for reporting randomized trials. *Nature Medicine*. 2025;31(6):1776-1783.
58. Paediatric Research in Emergency Departments International Collaborative research networks and the Australian and New Zealand Intensive Care Society Paediatric Study Group, George S, Williams T, Humphreys S, **Atkins T**, Tingay D, Gelbart B, Pham T, Craig S, Erickson S, Chavan A, Rasmussen K, Ganeshalingham A, Oberender F, Ganu S, Singhal N, Gibbons K, Le Marsney R, Burren J, Schlapbach LJ, Gannon B, **Jones M**, Dalziel SR, Schibler A. Effectiveness of nasal high-flow oxygen during apnoea on hypoxaemia and intubation success in paediatric emergency and ICU settings: a randomised, controlled, open-label trial. *The Lancet Respiratory Medicine*. 2025;13(6):545-555.
59. Chan AW, Boutron I, Hopewell S, Moher D, Schulz KF, Collins GS, Tunn R, Aggarwal R, Berkwits M, Berlin JA, Bhandari N, Butcher NJ, Campbell MK, Chidebe RCW, Elbourne DR, Farmer AJ, Fergusson DA, Golub RM, Goodman SN, **Hoffmann TC**, Ioannidis JPA, Kahan BC, Knowles RL, Lamb SE, Lewis S, Loder E, Offringa M, Ravaud P, Richards DP, Rockhold FW, Schriger DL, Siegfried NL, Staniszewska S, Taylor RS, Thabane L, Torgerson DJ, Vohra S, White IR, Hróbjartsson A. SPIRIT 2025 statement: updated guideline for protocols of randomized trials. *Nature Medicine*. 2025;31(6):1784-1792.
60. Scott AM, Peiris R, **Atkins T**, **Cardona M**, **Greenwood H**, **Clark J**, **Glasziou P**. Telehealth versus face-to-face delivery of cognitive behavioural therapy for insomnia: A systematic review and meta-analysis of randomised controlled trials. *Journal of Telemedicine and Telecare*. 2025;31(5):603-614.
61. Gallagher R, Neubeck L, Davis A, **Redfern J**, Parker HM, Hyun K, Chow C, Celermajer DS, Buckley T, Schumacher T, Tofler G, Figtree G. A Self-Administered Gamified Mobile Application for

Secondary Prevention of Heart Disease in Patients Following a Cardiac Event (MyHeartMate): Process Evaluation from a Randomized Controlled Trial. *Games for Health Journal*. 2025;14(3):204-211.

62. Stehlik P, Moles R, **Jones M**, Murray A, El-Den S, Morgan M, **Del Mar C**. Community pharmacists' referrals to General Practice with suspected need of antibiotics: an Australian cross-sectional pilot study. *The International journal of pharmacy practice*. 2025;33(3):256-261.
63. Abbott K, Seton N, Kaur G, Zhao J, **Jones M**, Singh K. Long-term (12 months) vs. short-term (<12 months) dual antiplatelet therapy post-percutaneous coronary intervention with drug-eluting stents: A critical appraisal and systematic review. *Coronary Artery Disease*. 2025;36(4):312-325.
64. Karunaratne S, Horsley M, Solomon M, Trevena L, **Hoffmann T**, McCaffery K, Zadro J, Harris IA. A Co-Designed Patient Decision Aid Supports the Decision Quality of Patients Considering Total Knee Arthroplasty: A Randomized Controlled Trial. *Journal of Arthroplasty*. 2025; 40(12):3138-3146.
65. Tikkinen KAO, Halme ALE, Guyatt GH, **Glasziou P**. The Impact of Definitions of Disease on Overdiagnosis. *JAMA Internal Medicine*. 2025;185(8):909-910.
66. Hopewell S, Chan AW, Collins GS, Hróbjartsson A, Moher D, Schulz KF, Tunn R, Aggarwal R, Berkwits M, Berlin JA, Bhandari N, Butcher NJ, Campbell MK, Chidebe RCW, Elbourne D, Farmer A, Fergusson DA, Golub RM, Goodman SN, **Hoffmann TC**, Ioannidis JPA, Kahan BC, Knowles RL, Lamb SE, Lewis S, Loder E, Offringa M, Ravaud P, Richards DP, Rockhold FW, Schriger DL, Siegfried NL, Staniszevska S, Taylor RS, Thabane L, Torgerson D, Vohra S, White IR, Boutron I. CONSORT 2025 Statement: Updated Guideline for Reporting Randomized Trials. *JAMA*. 2025;333(22):1998-2005.
67. Sims R, Michaleff ZA, **Glasziou P**, Thomas R. Discussing the potential consequences of a diagnostic label before routine non-cancer screening: qualitative study with general practitioners and consumers. *BJPsych Open*. 2025;11(4):1-10.
68. **Redfern J**, Hafiz N, Tu Q, Knight A, Hespe C, Chow CK, Briffa T, Gallagher R, Reid CM, Hare D, Manandi D, Zwar N, Woodward M, Jan S, Atkins ER, Laba T-L, Halcomb E, Billot L, Usherwood T, Hyun K. Effectiveness of data-driven quality improvement on hospitalizations and health outcomes for people with coronary heart disease in primary care (QUEL): a cluster randomised controlled trial with 24-month follow-up. 2025. doi: 10.1101/2025.06.12.25329537
69. Salem Bakheit Aldossari D, Taha Alshalaan N, Salem Alshammari K, Ahmed Lubbad F, Ratyan Alanazi M, Ahmed Lubbad N, Suliman Fahad Alessa N, **Ali S**. Pharmacists' Experiences on Adverse Drug Reactions in Saudi Arabia: A Cross-Sectional Study. *Pharmacy*. 2025;13(3):1-12.
70. Gauci S, Lotfaliany M, Machado P, Hodge A, Gamage E, Levy RB, Louzada MLDC, **Redfern J**, O'Neil A, Marx W, Lane MM. Exposure to ultra-processed food and risk of cardiovascular mortality: a prospective cohort study: a prospective cohort study. *European Journal of Preventive Cardiology*. 2025;1-22. zwaf378.
71. Manandi D, Hyun K, Candelaria D, Hollings MA, Tu Q, Gauci S, O'Neil A, Chaseling GK, Zhang L, Briffa T, Grace SL, Gallagher R, **Redfern J**. A century of cardiac rehabilitation research: Bibliometric review of publication history, keyword trends, and citations. *npj Cardiovascular Health*. 2025;2:1-9.
72. Abukmail E, Pradeep NK, Ahmed S, **Albarqouni L**. Moderate- to Long-Term Effect of Dietary Interventions for Depression and Anxiety: A Systematic Review and Meta-analysis. *Annals of Internal Medicine*. 2025;178(7):987-999.
73. Chang S, **van der Merwe M**, Zaka A, Gupta A, He C, Stroebel A. An Evaluation of Four Predictive Scores for New Onset Atrial Fibrillation After Cardiac Surgery in a Tertiary Cardiac Centre. *ANZ Journal of Surgery*. 2025;95:1394-1399.
74. Ellis T, Cheng S, Zecchin R, Hyun K, **Marks D**, Zhang L, Gallagher R, Clark R, **Redfern J**. Effect of a nurse-avatar guided discharge education smartphone application in people after acute coronary syndrome: a randomized controlled trial. *European Heart Journal - Digital Health*. 2025;6(4):772-782.
75. Chaseling GK, Gauci S, Hollings M, Cartledge S, **Redfern J**, Briffa T, Gallagher R, O'Neil A. Heatwaves and Heart Health: A Survey Study and Discussion on the Current Knowledge and Attitudes of Cardiac Rehabilitation Clinicians. *Journal of Cardiopulmonary Rehabilitation and Prevention*. 2025;45(4):271-77.

76. Riwa F, Odgers-Jewell K, **Jones MA**, Mushi A. The Prevalence and Determinants of Undernutrition Among Infants and Children Aged 6 Months to 5 Years in Sub-Saharan African Countries: A Systematic Scoping Review. *Nutrition Reviews*. 2025;83(7):e1896-e1916.
77. Hopewell S, Chan AW, Collins GS, Hróbjartsson A, Moher D, Schulz KF, Tunn R, Aggarwal R, Berkwits M, Berlin JA, Bhandari N, Butcher NJ, Campbell MK, Chidebe RCW, Elbourne D, Farmer A, Fergusson DA, Golub RM, Goodman SN, **Hoffmann TC**, Ioannidis JPA, Kahan BC, Knowles RL, Lamb SE, Lewis S, Loder E, Offringa M, Ravaud P, Richards DP, Rockhold FW, Schriger DL, Siegried NL, Staniszewska S, Taylor RS, Thabane L, Torgerson D, Vohra S, White IR, Boutron I. CONSORT 2025 statement: 무작위 배정 임상시험 보고 가이드라인 개정판. *Ewha Medical Journal*. 2025;48(3):1-13.
78. Jeng DYH, Min H, Marschner S, Quitans D, **Redfern J**, Klimis H, Hillis GS, Brieger DB, Atherton JJ, Bhindi R, Chew DP, Collins N, Andrew Fitzpatrick M, Juergens CP, Kangaharan N, Maiorana A, McGrady M, Poulter R, Shetty P, Hamilton-Craig C, Thompson P, Stepien S, Von Huben A, Shirley J, Chow CK. Family history of premature CHD and risk factor control in patients with a recent ACS. *npj Cardiovascular Health*. 2025;2:1-7. 37.
79. Altinger G, Jones CMP, Ferreira GE, Soon J, **Hoffmann TC**, Maher C, Chang R, Linder JA, Traeger A. Effectiveness of clinician-directed default nudges on reducing overuse of tests and treatments in healthcare: a systematic review of randomised controlled trials. *BMJ Quality and Safety*. 2025;bmjqs-2025-018793.
80. Gilbert T, **Redfern J**, Chew DP, Atherton J, Hillis G, Nicholls S, Brieger D, Rankin J, Lehman S, Maiorana A, Budgeon C, Cordingley, A, Robinson, T, Briffa, T. Randomised controlled trial of standard outpatient cardiac rehabilitation versus personalised cardiac rehabilitation for secondary prevention for all in need (SPAN) after type 1 myocardial infarction. *BMJ Open*. 2025;15(7):1-7.
81. Bar L, Wenke R, **Marks D**, Brandis S. Clinicians' perceptions of a mobile app decision-aid for improving patient compression stocking adherence: a qualitative descriptive approach guided by the technology acceptance model. *BMC Digital Health*. 2025;3(53):1-11.
82. Ville A, McRae R, Nomchong J, Reidlinger DP, **Davidson AR**, Staudacher HM, **Albarqouni L**. Effects of a Low FODMAP Diet in Inflammatory Bowel Disease and Patient Experiences: A Mixed Methods Systematic Literature Review and Meta-Analysis. *Journal of Human Nutrition and Dietetics*. 2025;38(4):1-15.
83. Wake E, McPaul A, Forbes J, Rolley A, Keijzers G, Williamson F, Winkleman C, Creswell P, **Merwe MVD**, **Sanders S**. Trauma activation criterion as predictors of major traumatic injuries: A systematic review. *Injury*. 2025;56(8):1-11. 112596.
84. Dhanapathy V, **Jones M**, Stroebel A, He C. Wire cerclage versus rigid plate fixation: a retrospective cohort study and cost-benefit analysis on method of sternotomy closure following cardiac surgery. *Heart, Lung and Circulation*. 2025;34(8):856-862.
85. Johansson M, Niklasson A, **Albarqouni L**, Jørgensen KJ, Guyatt G, Montori VM. Guidelines Recommending That Clinicians Advise Patients on Lifestyle Changes. *Annals of Internal Medicine*. 2025;178(8):1215.
86. **Hoffmann TC**, **Bakhit M**, Waters A. Shared decision making teaching frameworks: Oxford Textbook of Shared Decision Making in Healthcare. In Elwyn G, Joseph-Williams N, Edwards A, editors, *Oxford Textbook of Shared Decision Making in Healthcare*. 4 ed. Oxford University Press, USA. 2025;p.69-74.
87. **Atkins T**, **Marks D**, **Dowsett C**, **Glasziou P**, **Albarqouni L**. Trial-based economic evaluations of non-drug interventions in the Royal Australian College of General Practitioners (RACGP) Handbook of Non-Drug Interventions in primary care: a systemic review. *Family Medicine and Community Health*. 2025;13(3):1-14.
88. Malawaraarachchi N, **Bakhit M**, Smith JW. General practice registrars' current knowledge, awareness and utilisation of clinical prediction rules and other antimicrobial stewardship strategies in the context of respiratory infections: A qualitative study. *Australian Journal of General Practice*. 2025;54(9), 330-330.
89. **Tu Q**, Lin S, Hafiz N, Hyun K, Manandi D, Zhao E, Wu H, Huang Y, Ma S, Zhang Z, Zheng J, **Redfern J**. Independent and joint associations of hypertension and depression with cardiovascular diseases and all-cause mortality: a population-based cohort study. *Journal of Human Hypertension*. 2025;39(9):634-642.

90. Scott AM, **Sanders S**, **Atkins T**, **van der Merwe M**, Sunner C, **Clark J**, **Glasziou P**. The impact of telehealth care on escalation to emergency care: A systematic review and meta-analysis. *Journal of Telemedicine and Telecare*. 2025;31(8):1059-1077.
91. Saidi SAC, **Jones MA**. RE: Invasive cervical cancer incidence following bivalent human papillomavirus vaccination: A population-based observational study of age at immunization, dose, and deprivation. *Journal of the National Cancer Institute*. 2025;117(9):1942-1943.
92. Jowsey T, Stapleton P, Campbell S, **Davidson A**, McGillivray C, Maugeri I, Lee M, Keogh J. Frankenstein, thematic analysis and generative artificial intelligence: Quality appraisal methods and considerations for qualitative research. *PLoS One*. 2025;20(9):1-13.
93. Abdulaziz AlZa I, Mashal Alshamma F, Saud Ali Alshowaiy A, Almutairi AS, Samit Alhaysuni M, Fawaz Alha T, Ibrahim Alomair B, Athal AlhaA, Mathil Almot O, Khelaif Al Dha M, Nasser Alalawi M, M. Albala BMA, Saad Alha M, **Ali S**. Antibiotic-associated drug-related problems and pharmacist interventions during the Hajj pilgrimage in Saudi Arabia: insights from a retrospective analysis. *Journal of Hospital Management and Health Policy*. 2025; (9)1-11.
94. Takahashi O, Deshpande GA, **Glasziou P**. Do Self-Measured Blood Pressure Devices Change Outcomes?: Implementation Does: Team-Based Insights from the ASPIRE Hybrid Trial. *Journal of General Internal Medicine*. 2025;40(16):3819-3821.
95. **Salehi N**, **Marshall GR**, Maziarfar MH, Zubrinich A, Madani N, Nickbakht M, Moustafa AA. A Double-Edged Sword Perspective on Young Australians' Use of Social Media: A Structured Narrative Review. *Health Promotion Journal of Australia*. 2025;36(4):1-17.
96. Malliaras P, Haines TP, Burstein F, Connell D, Delir Haghighi P, **Hoffmann T**, Neil J, Nicklen P, Skouteris H, Page RS, Whale R, Harris I, Zadro JR. Development of a patient decision aid in relation to imaging for rotator cuff tendinopathy: a mixed-methods study. *Musculoskeletal Science and Practice*. 2025;79:1-9.
97. Scott AM, **Clark J**, **Cardona M**, **Atkins T**, Peiris R, **Greenwood H**, Wenke R, Cardell E, **Glasziou P**. Telehealth versus face-to-face delivery of speech language pathology services: A systematic review and meta-analysis. *Journal of Telemedicine and Telecare*. 2025;31(9):1203-1215.
98. Filbay SR, Rooney J, **Hoffmann T**, Edib Z, Teo PL, Hinman RS, Bennell KL. "The only way you're ever going to play sport again is if you go through surgery": A mixed methods study exploring anterior cruciate ligament (ACL) injury treatment decisions from the perspective of 734 patients. *Journal of Science and Medicine in Sport*. 2025;28(10):821-832.
99. **Iqbal U**, Wilson N, Taylor R, Smith L, Kohler F. Using Conversations, Listening and Leadership to Support Staff Wellness: The CALM Framework. *International Journal of Environmental Research and Public Health*. 2025;22(10):1-11. 1558.
100. Weddell J, Li E, Shi W, Gallagher R, Partridge SR, Hyun K, Poulsen V, Verdicchio C, Buckley T, **Redfern J**. Framework for the Development and Delivery of Digital Peer Support Programs: Qualitative Study on in-Person and Digital Delivery for People With Cardiovascular Disease. *Journal of Medical Internet Research*. 2025;27:e72743.
101. Hughes IP, **Merwe MVD**, **Jones M**. How to understand, critically appraise, and write the Statistical Methods section of a clinical research paper. *Australian Critical Care*. 2025;38(6):1-6.
102. Goren K, Lai VKW, Baba A, Smith M, Allegaert K, Butcher NJ, Fernandes R, Gill PJ, Hartling L, Juszczak E, Longmuir PE, Macarthur C, Mehta K, Metz D, Nguyen KA, Odermarsky M, Poluru R, Purper-Ouakil D, Reggiardo G, Stratton C, Szatmari P, Trivedi A, Upton J, **Hoffmann T**, Offringa M. Transparent reporting of pediatric clinical trial interventions: TIDieR-Children and Adolescents. *Pediatrics*. 2025;156(5):e2025072867.
103. Ellis T, Cheng S, Lee C, Paramaguru P, Senthilnathan A, Chen HY, Hyun K, Zecchin R, **Redfern J**. Secondary Prevention Education Initiated in Hospital for People with Coronary Heart Disease: A Systematic Review and Meta-Analysis. *European Journal of Preventive Cardiology*. 2025;doi:10.1093/eurjpc/zwaf709
104. **Sales R**, Ong LA, Oraño J, Famaloan F, Peters L, Veyra CD, Dunlao K, Garcia G, Alvina K. Development of the Philippine National Unified Health Research Agenda 2023–2028. *Discover Public Health*. 2025;22(1):1-13. 73.
105. **Sanders SL**, Ibounig T, Haas R, **Jones MA**, Rämö L, Docking S, Järvinen TLN, Taimela S, **Hoffmann TC**, Buchbinder R. Rotator cuff imaging abnormalities in asymptomatic shoulders: A systematic review. *Journal of Orthopaedic and Sports Physical Therapy*. 2025;55(12):736-751.

106. Doshi K, **Jones M**, Hattingh L. Safety and efficacy of enoxaparin versus unfractionated heparins in conservatively managed patients with acute coronary syndrome: a systematic review. *Journal of Pharmacy Practice and Research*. 2025;55(6):447-457.
107. n G, Gulbrandsen P, Leavitt H, Abukmail E, Clayman ML, Edwards A, Finderup J, Fisher A, Grande SW, Hahlweg P, **Hoffmann T**, Hou WH, Hernández-Leal MJ, Leung D, Lu W, Mandelkow L, Pecanac KE, Pieterse AH, Price A, Rabben J, Riganti P, Sanatani M, Scheibler F, Schoefs E, Taylor OA, Valentine KD, Wexler R. Shared decision-making. A primer for clinicians. *Journal of General Internal Medicine*. 2025;40(16):3889-3899.
108. Gram EG, Moynihan R, Copp T, Shih P, **Albarqouni L**, Akl E, Smith C, Hardiman L, Nickel B. Addressing misleading medical information on social media: a scoping review of current interventions. *Evidence-Based Medicine*. 2025;30(6):420-433.
109. Narasimhan P, **Iqbal U**, Li YC. Artificial intelligence in clinical risk prediction: promise, performance and the path forward? *BMJ Health and Care Informatics*. 2025;32(1):1-2.
110. Manandi D, **Redfern J**, Tu Q, Chang AYJ, Hafiz NS, Candelaria D, Hyun K. Socioeconomic variation in the relationship between cardiac rehabilitation participation and clinical outcomes: a systematic review. *Open Heart*. 2025;12(2):1-13.
111. Georgina J, Mark O, Brenda C, **Mark J**, Elaina K. Lidcombe Program outcomes for school-age children: Clinical considerations based on responsiveness trends. *Journal of Clinical Practice in Speech-Language Pathology*. 2025 (online first doi.org/10.1080/22000259.2025.2588211).
112. Tang X, Marshall S, **Davidson AR**, Craggs-Dino L, Fayet-Moore F, Reidlinger DP. Managing micronutrients in metabolic and bariatric surgery: A mixed methods study of Australian dietitians' practice and perspectives. *Nutrition and Dietetics*. 2025; Online first doi: 10.1111/1747-0080.70056.
113. Alghamdi MA, Alrashidi M, Alromaih M, Alissa D, Alghamdi M, **Ali S**, Al-Jedai A. Patient satisfaction in a pharmacist-led kidney transplant pharmacotherapy clinic. *Saudi Journal of Clinical Pharmacy*. 2025;4(4):95.
114. Krishna J, **Jones M**, Laetitia H. Safety and Efficacy of Low Molecular Weight Heparins Versus Unfractionated Heparins in Patients with Acute Coronary Syndrome: A Systematic Review. *Journal of Pharmacy Practice and Research*. 2025;55(6):447-457.
115. Goodman A, Cashin AG, Mishra I, Ryan M, McBride J, Marsh S, Xie T, Batista G, **Byambasuren O**, McAuley JH, Rizzo RRN. "A tool to support, not replace": patient and general practitioner perceptions of digital decision support tools for back pain. *Fam Pract*. 2025;43(1):cmf098.
116. Gauci S, Gao L, Gallagher R, **Redfern J**, Cartledge S, O'Neil A. Securing long-term heart health for Australians: understanding how funding structures in cardiac rehabilitation influence cardiovascular inequities. *Heart, Lung and Circulation*. 2025;35(2):186-189.
117. Hafiz N, Hyun K, Tu Q, Manandi D, Shi W, Usherwood T, **Redfern J**. Effectiveness of quality improvement interventions in improving cardiovascular disease-related outcomes in primary and tertiary care: A systematic review and meta-analyses. *BMC Primary Care*. 2025 Nov 17;26(1):366.
118. Ashworth NL, Bland JDP, Chapman KM, Tardif G, **Albarqouni L**, Nagendran A. Inyección local de corticoides frente a placebo para el síndrome del túnel carpiano: una revisión Cochrane. *Emergencias*. 2025;37(2):143-144
119. Abukmail E, Pradeep NK, Ahmed S, **Albarqouni L**. Moderate-to long-term effect of dietary interventions for depression and anxiety: a systematic review and meta-analysis. *Annals of Internal Medicine*. 2025;178(7):987-999.
120. Abukmail E; Pradeep NK, Ahmed S, **Albarqouni L**. Summary for Patients: Moderate-to Long-Term Effect of Dietary Interventions for Depression and Anxiety. *Annals of Internal Medicine*. 2025;178(7):I14-I14.
121. Ville A, McRae R; Nomchong J, Reidlinger DP, **Davidson AR**, Staudacher HM, **Albarqouni L**. Effects of a Low FODMAP Diet in Inflammatory Bowel Disease and Patient Experiences: A Mixed Methods Systematic Literature Review and Meta- Analysis. *Journal of Human Nutrition and Dietetics*. 2025;38(4):e70106.

ABSTRACT & LETTERS

1. **Davidson AR**, Olsen L, Ansari S, Yang IA, Reddel H, Halcomb EJ, Hosseinzadeh H, Dennis SM, Morgan M, Zwar NA. Qualitative evaluation of a self-management program for COPD in the context of multimorbidity in Australian General practice. 2025. Abstract from 25th WONCA World Conference, Lisbon, Portugal.
2. **Davidson AR**, Morgan M, Ball LE, Reidlinger DP. Involving Patients in Chronic Disease Teams. 2025. Abstract from 25th WONCA World Conference, Lisbon, Portugal.
3. Ellis T, Cheng S, Zecchin R, **Redfern J**, Hyun K, **Marks D**, Zhang L, Gallagher R, Clark R. Effects of a Nurse-Avatar Guided Discharge Education Smartphone Application in People After Acute Coronary Syndrome: A Randomised Controlled Trial. *Heart, Lung and Circulation*. 2025;34(Supplement 4):S491-S492.
4. Fraiman J, Erviti J, **Jones M**, Greenland S, Whelan P, Kaplan RM, Doshi P. Letter to the editor. *Vaccine*. 2025 Feb 27;48:1-2. 125067.
5. **Marks D**, Hing WA. The impact of waiting for chronic pain services, a systematic review with meta-analysis.. 2025. Abstract from Australian Physiotherapy Association Conference 2025, Adelaide, South Australia, Australia.
6. **Marks D**, Gough S, Candelaria D, Thomas E, Weddell J, **Redfern J**. Patient-level financial incentives in cardiovascular risk management and secondary prevention. A systematic review with meta-analysis. *Heart, Lung and Circulation*. 2025;34:S233.
7. **Greenwood H, Albarqouni L**. Effect of Potassium-Enriched Salt on Cardiovascular Outcomes for People With History Of Cardiovascular Disease: Subgroup Analysis of a Systematic Review and Meta-Analysis. *Heart Lung and Circulation* 2025;34:S640-642.
8. SapaenV, Earnshaw S, **Redfern J**, Chaseling G, Hyun K. The Impact of Extreme Heat on Cardiovascular Mortality in Southeast Asia: A Systematic Review. *Heart, Lung and Circulation*. 2025;S4:S535).
9. Bradburn EJ, Just J, Smith C, Jordaan S, **Redfern J**, Chow C. Improving Outcomes in Coronary Heart Disease via a Tailored Digital Patient Support Program. *Heart, Lung and Circulation*. 2025;34:S496.
10. Manandi D, Hyun K, Candelaria D, Hollings M, Tu Q, Gauci S, O'Neil A, Chaseling G, Zhang L, Briffa T, Gallagher R, **Redfern J**. A Century of Cardiac Rehabilitation Research: A Bibliometric Review of Global Publication, Citation History, and Trends in Keywords From 1927 to 2024. *Heart, Lung and Circulation*. 2025;34:S225.
11. Cartledge S, Lucas M, Dinh D, Brennan A, Gauci S, O'Neil A, Thomas E, Gallagher R, **Redfern J**, Reid C, Lefkovits J, Driscoll A, Stud D. Patient Outcomes Associated With Cardiac Rehabilitation in Victoria, Australia: A Linked Data Analysis. *Heart, Lung and Circulation*. 2025;34:S232.
12. Li E, Shi W, Weddell J, Gallagher R, Hyun K, Law C, Briffa T, Lowres N, Verdocchio C, Maiorana A, Zecchin R, Candelaria D, Bauman A, Figtree G, Hackett M, Lindley R, Skarligos F, Carnell J, Rees C, Ferry C, Poon S, Poulsen V, Astley C, **Redfern J**. User Engagement in a Digital Peer Support Program for Heart Disease: Preliminary Application Analytics of the Heart2Heart Randomised Controlled Trial. *Heart, Lung and Circulation*. 2025;34:S504.
13. Weddell J, Li E, Shi W, Gallagher R, Partridge SR, Hyun K, Poulsen V, Verdicchio C, Buckley T, **Redfern J**. Developing a framework for cardiovascular disease digital peer support interventions: a multi-component qualitative study. *European Heart Journal*. 2025;46(Issue Supplement_1):ehaf784.4508.
14. Manandi D, Hyun K, Turk-Adawi K, Candelaria D, Zende A, Jiandani M, Ka M, Lin MJ, Cuenza L, **Redfern J**. Socioeconomic factors and their association with depressive symptoms and quality of life following cardiac rehabilitation in low-income countries and low-resourced settings. *European Heart Journal*;46(Issue Supplement_1):ehaf784.4558.
15. **Davidson A**. Maugeri I, **Greenwood H, Albarqouni L**. How Can We Make it Work Better?" Perspectives of Patients and General Practitioners on Non-Drug Interventions for Preventing and Managing Cardiovascular Disease. *Heart, Lung and Circulation*. 2025;34:S521.
16. **Van der Merwe M, Atkins T**, Scott A, **Glasziou PP**. Diagnostic Assessment via Live Telehealth (Phone or Video) Versus Face-to-Face for the Diagnoses of Psychiatric Conditions: A Systematic Review. 2025. Abstract from European Congress on Addiction and Psychiatry, Lisboa, Portuga



BOND UNIVERSITY

Gold Coast Queensland 4226 Australia
+61 7 5595 000

bond.edu.au/iebh
iebh@bond.edu.au

CRICOS 00017B
TEQSA PRV12072

The information published in this document is correct at the time of publishing. However, all programs are subject to review by the Academic Senate of the University and the University reserves the right to change its program offerings and subjects without notice. The information published in this document is intended as a guide and persons considering an offer of enrolment should contact the relevant Faculty or Institute to see if any changes have been made before deciding to accept their offer.

Ambition Loves Company BOND UNIVERSITY

