

ORIENTATION

*Ambition
Loves Company*

Acknowledgement of Country

Bond University acknowledges the Kombumerri people, the traditional Owners and Custodians of the land on which the University now stands. We pay respect to Elders past, present and emerging.



Contents

START HERE	<u>4</u>
DAILY PROGRAM	<u>5</u>
PHYSIO PROGRAMS	<u>6</u>
MEET YOUR STUDENT ASSOCIATION (BUSA)	<u>7</u>
GET SOCIAL	<u>8</u>
SUPPORT SERVICES	<u>11</u>
PUBLIC TRANSPORT	<u>12</u>
NAVIGATING CAMPUS	<u>13</u>
MYBOND APP	<u>14</u>
CAMPUS MAP	<u>15</u>

Where to start?

BEFORE YOU GET TO CAMPUS:

Activate your student IT account (after you have been admitted)

bond.edu.au/activate

Finalise your enrolment and register for classes

For students who are unable to enrol, please contact Student Assist
studentassist@bond.edu.au

Upload your student ID photo via the [CaptureME portal](#)

Please ensure you do this before Thursday, 30 April to ensure your card is ready for collection. studentid.bond.edu.au

Planning to park on campus?

Register for your campus parking permit
bond.edu.au/contact/parking

Complete the required [Safe and Respectful Communities](#) and [Academic Integrity Modules](#)

Download the MyBond app on the [App Store](#) or get it on [Google Play](#)

Find out more about MyBond on page 14

WHEN YOU GET HERE:

Student ID

Make sure to collect your Student ID, Wall Planner & Welcome Gift from Basil Sellers Foyer when you arrive on Wednesday at 8am.

Connect your devices to the student wifi

Find more information [here](#)

Get social and attend some events

[Click here](#) to register now



Daily program overview

IDENTIFY YOUR FACULTY

Your faculty is like your extended family at Bond and includes students from a number of programs and disciplines. Learn which faculty you're a part of and make sure you tune into the faculty welcome sessions during Orientation.

If you're studying a combined degree, you could be part of two faculties! Or if you're a study abroad and exchange student, pick the faculty that best represents your studies.

 Bond University College (BUC)	Preparation Program, English Language Program, Foundation Program, Higher Education Diplomas
 Bond Business School (BBS)	Actuarial Science, Business, Commerce, Data Analytics, Entrepreneurship, Hotel and Tourism Management, Sports Management
 Health Sciences & Medicine (HSM)	Biomedical and Health Sciences, Exercise and Sports Science, Healthcare Innovations, Medicine, Nutrition and Dietetic Practice, Occupational Therapy, Physiotherapy
 Law (LAW)	Laws, Juris Doctor, Legal Studies, Business Law, Jurisprudence and Legal Administration
 Society & Design (FSD)	Architecture, Built Environment, Communication, Criminology, Film, Screen and Creative Media, Humanities and Global Studies, International Relations, Social Sciences, Psychology and Counselling
 Transformation CoLab (CoLAB)	Digital Transformation, Entrepreneurial Transformation, Health Transformation, Legal Transformation

Decipher the icons

-  **Compulsory - All students**
-  **Support**
-  **Optional**
-  **Social**
-  **Compulsory - Degree specific**

Physiotherapy

DEGREE SPECIFIC

Wednesday, 6 May

Time	Event	Who	Location	
! 8am - 9am	Faculty of Health Sciences & Medicine Registration & Student ID Collection	All physiotherapy students	Basil Sellers Foyer, Level 3, Building 6	06_3_99
! 9.00am – 9.30am	Faculty of Health Sciences & Medicine Welcome	All physiotherapy students	Basil Sellers Theatre, Level 3, Building 6	06_3_12
! 9.30am – 9.45am	Health and Sports Sciences Student Association Introduction	All physiotherapy students	Basil Sellers Theatre, Level 3, Building 6	06_3_12
! 10.15am - 11.15am	Physiotherapy - Thriving in Your Program	All physiotherapy students	Basil Sellers Theatre, Level 3, Building 6	06_3_12
! 11:15am – 12.15pm	Compliance Workshop Bring your laptop	All physiotherapy students	Basil Sellers Theatre, Level 3, Building 6	06_3_12
! 12.15pm - 1.15pm	Welcome Lunch	All physiotherapy students	Atrium, Level 3, Building 5	05_3_95
! 1.15pm - 2pm	Main Campus Tour	All students	Meeting Point Pulse Cafe, Level 3, Building 5	05_03
! 2.00pm – 3.00pm	Physiotherapy - International Student Welcome	All international physiotherapy students	Room 53, Level 3, Building 5	05_3_53

Thursday, 7 May

Time	Event	Who	Location	
! 8.45am - 3.30pm	Doctor of Physiotherapy Program Orientation - Day 1	All physiotherapy students	Room 21, Level 1, BIHS North	BIHSN_1_21

Friday, 8 May

Time	Event	Who	Location	
! 8.30am - 12pm	Doctor of Physiotherapy Program Orientation - Day 2	All physiotherapy students	Room 21, Level 1, BIHS North	BIHSN_1_21
! 12pm - 12.30pm	Doctor of Physiotherapy Program Orientation - Badge Ceremony	All physiotherapy students	Amphitheatre, Level 1a, BIHS North	BIHSN_1a
! 12.30pm - 1.30pm	End of Orientation Week Lunch	All Physiotherapy Students	Panacea Cafe, Level 1, BIHS North	BIHSN_1



Meet BUSA

The Bond University Student Association, or BUSA for short, is a team of 21 volunteer students working towards one common goal: to enhance your experience at Bond University.

Our commitment to you begins right now during Orientation and continues through to your Graduation. We offer regular social events, representational support, and advocate for the student perspective at the University's committees and on the sporting field. We also keep you informed along the way. Follow us on [Instagram](#) and [Facebook](#), or visit our [website](#) to stay up-to-date with the events, initiatives, and support we offer!

If you ever have a question, drop by our home in the Student Court. Turn right after leaving Don's between 10am and 3pm Monday to Friday, except on Wednesday's when you'll find us on the BBQ cooking a weekly sausage sizzle free for Bondies. Called Wednesday by the Water, the BBQ takes place from 12pm - 2pm in Don's or the Amphitheatre.

BUSA oversees all five Faculty Student Associations - the Law Students' Association (LSA), the Business Students' Association (BSA), the Medical Students Society of Bond University (MSSBU), the Health and Sport Sciences Student Association (HSA), and the Society and Design Students' Association (SDSA). We also coordinate more than 100 clubs and societies.

CLUB SIGN ON DAY

One of the best ways to get involved at Bond is joining a club! Head down to the 262 Club Sign on Day on Wednesday, 20 May from 12pm-2pm! Learn more about our clubs [here](#).

BUSA'S ADVICE TO YOU

Attend every O-Week event

From trivia night to Top Golf, coming along to our O-Week events is the best way to meet your fellow new Bondies.

Plan your semester

Remember to register early for new classes to organise your ideal schedule. Collect your wall planner to stay organised.

[REGISTER HERE](#)

Social Connection

[REGISTER NOW](#)

Your Bond community starts here.

Orientation is your chance to explore, connect and find your place. Jump into as many activities as you can to meet new people, try something different and build friendships that last beyond your first week. So come along, get involved and make Bond University feel like home.

Tuesday

Welcome Week Warm-Up

6.30pm - 9.00pm | Don's

Your first night starts here with live music, complimentary snacks and bar games.



Wednesday

BUSA O'Week Trivia Night

6.30pm - 10.00pm | Princeton Room

A bit of friendly competition never hurt anyone. Gather your crew and test your knowledge. FREE pizza provided.



Thursday

Top Golf

4.30pm - 7.00pm | Top Golf

Tee off at Top Golf for the perfect mix of sport and social interaction.

Cost: \$30 - price includes one round of golf and transport.

Welcome to Bond Party

8.00pm - 11.30pm | Don's

Celebrate in style! DJ and Drinks at Don's.

Theme: If your name starts with B, so does your outfit. E.g. Ben might be a builder.

Optional late transport to Surfers Paradise available.

Friday

Yoga + Soundbath In the Woods

2.00pm - 3.15pm | Ohmae Piazza

Restore the calm back into your week with yoga in the serenity of the Ohmae Piazza. Limited yoga mats available. If you have your own mat, please bring it along to avoid disappointment.

Movie on the Field

6.30pm - 9.00pm | AFL Fields

Kick back and enjoy a casual flick under the stars on the AFL fields.

Saturday

Orientation Run Club

6.30am - 7.30am | Don's Lawn

Start your Saturday on the right foot and then grab yourself a FREE coffee post-run.

Movieworld Adventure

10.00am - 4.00pm | Movieworld

Take on the big rides and experience all the thrills. Bus departs from the Student Court.

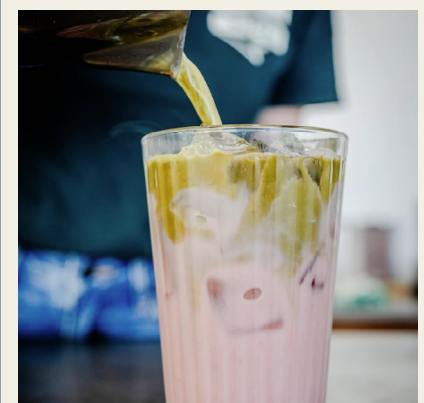
Cost: \$45 - ticket and bus included.

Sunday

BUSA Recovery + Recharge

10.00am - 11.00am | Amphitheatre

Join us for FREE matcha, coffee and croissants in the ADCO Amphitheatre as we wind down and recharge for Week 1.



Postgraduate Highlights

POSTGRADUATE STUDENT SUPPORT SESSION

Tuesday, 12 May

11am - 11.45am

Room 40, Level 3, Building 5

POSTGRADUATE MEET & GREET

Week 1 | Wednesday, 20 May

4.30pm - 6pm

University Club, Level 3, Building 6

[REGISTER HERE](#)



Support services

At Bond, one thing drives everything we do: you - our students! We're here to lend a hand with anything you need, from First Nations, international, disability and LGBTIQ+ support through to academic services and career development assistance.

Academic Skills Centre

Our Academic Skills Advisors are here to help you develop your academic skills and reach your potential. It's a free personal service for Bond students where we work with you one on one to help you with your individual needs.

Student Success Advisors

Our team of Student Success Advisors are your first point of contact for support and guidance. Our Advisors are here to connect with and support you from your initial transition into university through to the end of your studies as needed. For more information and to make an appointment, [click here](#).

Accessibility and Inclusion

Accessibility & Inclusion provides students with support to ensure an accessible and inclusive campus for all. Students who require additional support due to a medical condition or disability may be eligible for support.

[Click here to learn how to make a booking](#).

BondCare

BondCare is Bond's approach to caring for and supporting our students. BondCare enables student success through the provision of personalised engagement, care, and safety responses, and empowers students to achieve their goals by addressing academic, wellbeing, and safety barriers to success. To access BondCare, simply visit bond.edu.au/BondCare.

Bond University Crisis Line

The Bond University Crisis Line provides immediate, free support to our students.

Call: 1300 359 504

Text: 0485 829 136

LGBTIQ+

If you identify as part of the LGBTIQ+ community, you will join an inclusive and supportive community and have access to a number of support services.

Campus Security

Safety and Security is here to support students, staff and the Bond community 24/7. If you ever find yourself in an uncertain situation, feel unsafe or are a victim of abuse or harm, Security can be reached by phone at any hour.

Save this number in your phone: 07 5595 1234

Library Services

Library Services offers a variety of study spaces, learning resources and research support services including [one-on-one appointments with your Faculty Librarian](#) to get started in finding academic research for assignments.

Student Assist

The Student Assist team can help with your enrolment, class registration, subject choice and timetable enquiries. They can also assist with study plans, student visa issues, overseas student health cover and advice on other student administration matters throughout your studies up until graduation.

Find them in the Main Library or e-mail studentassist@bond.edu.au

Career Development Centre (CDC)

The CDC's qualified team provides a full suite of career guidance services. Right from day one, they can help you define your career path, write applications and resumes, prepare for interviews and make contact with key employers. They can even help you find part-time employment and holiday jobs.

International Student Support

To ensure, as an international student, your time at Bond is as enjoyable as possible, we have various support services available to you. [Click on the link above to read more!](#)

Medical Clinic

The Medical Clinic is a facility for currently enrolled students and staff members of Bond university. The Medical Clinic is located within Wellbeing Services - Level 1, Student Court, Building 9.

Call 07 5595 4043 for appointments.

Student Counselling Service

Our counsellors at Bond University provide a free, confidential counselling to all currently enrolled students.

If you are struggling with a lack of motivation, your mental health, or transition to University, one-on-one sessions with our counsellors may assist you in further developing the skills you need to cope with these challenges.

Call: +617 5595 4043

Email: studentcounselling@bond.edu.au

Nyombil Indigenous Centre

The Nyombil Centre is a supportive space where Australian First Nations students are empowered to thrive in their studies and prepare for their future careers. The dedicated team provides inclusive, culturally safe programs that foster resilience, creativity, and lifelong learning, helping students reach their full potential.

Under 18s support

Bond ensures all our students under 18 years have a dedicated support staff appointed as their key point of contact. They will provide proactive, regular check-ins in relation to health, well-being, and studies. Students are encouraged to raise any concerns openly with their support staff.

Read the full [Welfare Arrangements for Students Under the Age of 18 Procedure](#).



Getting Around & Living Near Bond

Getting to and from main campus and BIHS

Located approximately 4kms away from Bond University's main campus, the Institute is adjacent to the Robina Hospital, Cbus Super Stadium, and Robina train station. Bus route 750 is a regular service between Robina train station and Bond University. Keep an eye out so you don't miss your stop!



Getting Around the Gold Coast Is Easy (and Cheap!)

New to the Gold Coast? Good news — getting around is simple, cash-free and super affordable.

Tap & Go – No Ticket Needed

You can travel on buses, trams and trains by simply tapping on and off with:

- Your mobile phone or smart watch
- A debit or credit card

No need to buy a ticket or top up — just tap and ride.

Every Trip Is Just 50c

Right now, all public transport fares across the Gold Coast are only 50 cents per trip — no matter how far you go.

That means:

- Campus to the beach
- Home to work
- Exploring Surfers Paradise

All for 50c.

Student Tip

Public transport runs frequently and connects all major areas, so it's an easy way to explore the city without needing a car.

Shopping Near Bond University

If you're new to the area, everything you need is close by.

Closest Supermarkets

The nearest supermarkets to Bond University are in Robina:

- Coles
- Woolworths
- ALDI

All are easy to reach by public transport, bike or a short drive.

Robina Town Centre

Robina Town Centre is the closest major shopping centre to Bond. It has:

- Supermarkets and department stores
- Clothing, electronics and stationery
- Pharmacies, banks, cafés and a cinema

It's a popular spot for students and easy to reach — remember, public transport trips are just 50c.

Pacific Fair Shopping Centre

Pacific Fair in Broadbeach is one of Queensland's largest shopping centres and great for anything you can't find locally, with plenty of shops, dining and entertainment. It's easy to get to by tram, train and bus.



Navigating campus

We know there is a lot of information to take in during Orientation, so here are some final tips to getting around and commencing your journey at Bond.

Find your way around

MazeMap is Bond's virtual map, where you can find your way around Bond's main campus and Institute of Health and Sport (BIHS) by simply searching for a location, then selecting 'directions'. The app will use your current location to guide you to where you need to go. Click here to connect to [MazeMap](#).

Our campus locations

Main Campus

The majority of Bond's programs are based here, including our on-campus student accommodation. Address: 14 University Drive, Robina QLD 4226.

Bond Institute of Health & Sport (BIHS)

Home base for students in Physiotherapy, Occupational Therapy, Nutrition & Dietetics and Sports and Exercise Science programs. Address: 2 Promethean Way, Robina QLD 4226

How room numbers work

Bond's rooms are labelled in the order of building number, followed by the level, and then room number. For example, 06_02_01 indicates Building 6, Level 2, Room 1.

Understanding the semester code

At Bond, we refer to each semester with a three-digit number. **The upcoming May 2026 semester is 262.** To work out the semester number, take the last two digits of the year (e.g. 2026 - '26') and the number of the semester (we're in semester 2, so use '2').

Parking on campus

Parking is free for all students at Bond with a valid digital parking permit. Register your details [online now](#).

Student rights and responsibilities

The [Bond University Student Charter](#) sets out the expectations which you may have during your education at Bond and, in turn, outlines what we can expect from you. It is important that you familiarise yourself with the Student Charter which was developed in consultation with the Bond University Student Association.

Your student ID card

Keep your card safe and with you at all times. It will provide:

- Access to the Main and Law Libraries, plus the Business Commons
- 24/7 swipe access into the Multimedia Learning Centre (MLC) and the Computer Labs 24/7
- Access to any external door that leads to a teaching space [Monday to Friday between 7am - 7pm]
- Specialised access required for degree program facilities
- Has your dining plan on it for students living in residence
- Library borrowing
- Printing and photocopying access
- Sports Centre membership

Introducing the MyBond app

DESIGNED WITH YOUR STUDENT EXPERIENCE IN MIND

MyBond provides a central point for everything you need to support your university experience!

From your program details and study resources to career support and campus events, everything is just a click away.



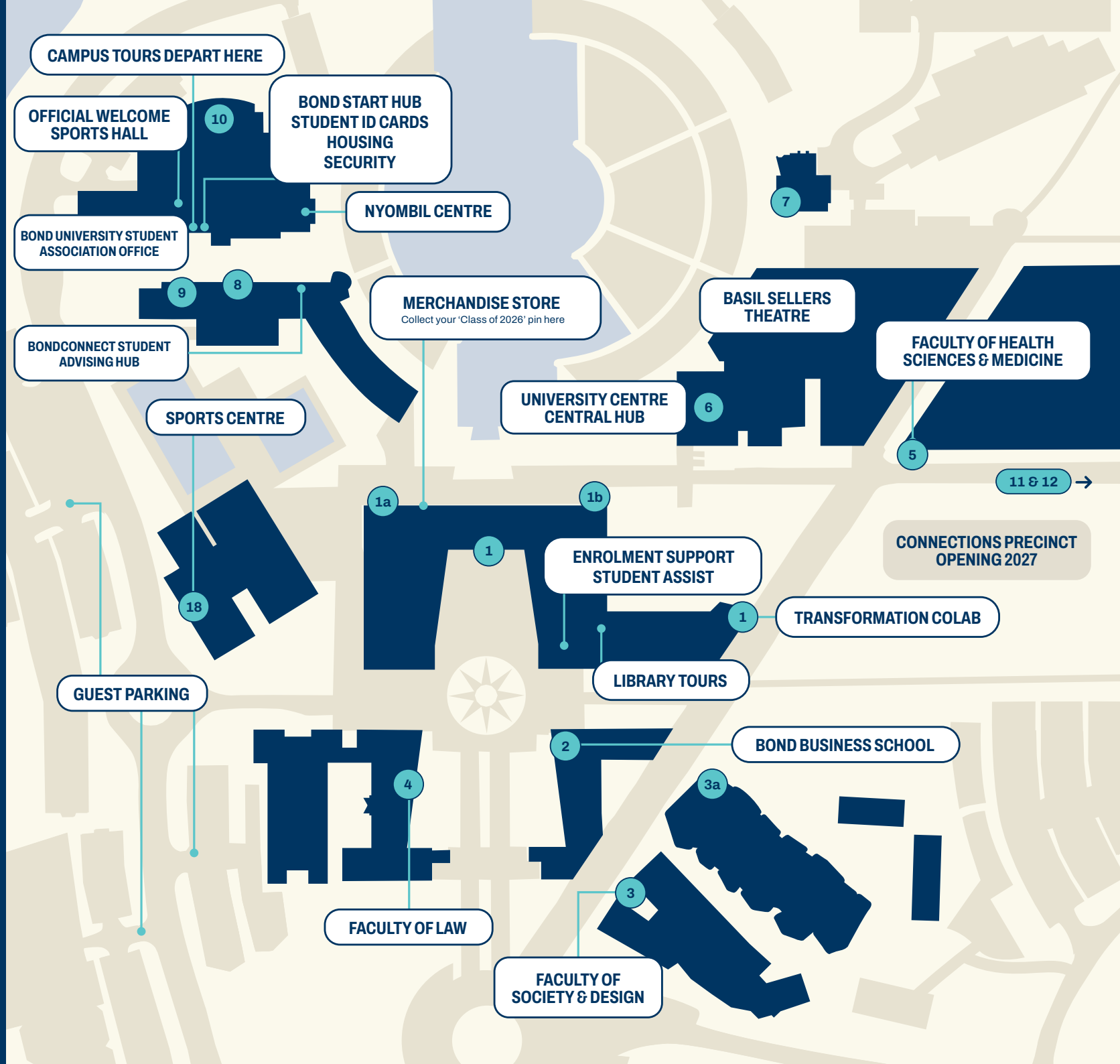
Visit my.bond.edu.au for access

Download on the [App Store](#) or [Google Play](#)



Main campus

- 1. Arch building
- 1a. Faculty of Society & Design
- 1b. Library/Print Shop/Bat Labs
- 1c. Transformation CoLab
- 2. Bond Business School
- 3. Society & Design Precinct
- 3a. Abedian School of Architecture
- 4. Faculty of Law
- 5. Faculty of Health Sciences & Medicine
- 6. University Centre
- 7. West Tower Student Accommodation
- 8. East Tower Student Accommodation
- 9. Student Court & Bond University College
- 10. Recreation Centre
- 18. Sports Centre
- 11 & 12. The Halls Student Accommodation



SCAN TO VIEW OUR
ONLINE CAMPUS MAP