



Position Description

Position Title: Head of Discipline, Clinical Exercise Physiology	Classification: Academic
Faculty/School/Office: Faculty of Health Sciences and Medicine	Date Position Classified: December 2025

Purpose of the Position:

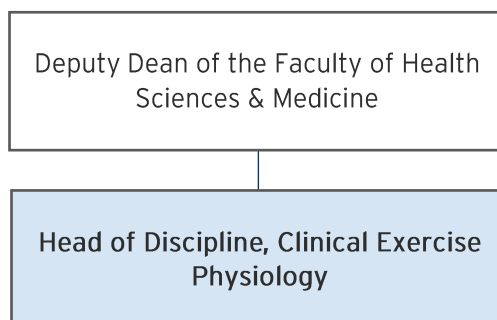
The Head of Discipline, Clinical Exercise Physiology provides academic, strategic, and operational leadership in the establishment, development, and management of an undergraduate Clinical Exercise Physiology program within the Faculty of Health Sciences and Medicine at Bond University. As the Head of Discipline, Clinical Exercise Physiology, this role is responsible for the design, accreditation, and continuous quality improvement of the Bachelor of Clinical Exercise Physiology program. This involves transformation of the current bachelor of exercise and sport science degree into a program that provides accreditation with Exercise & Sports Science Australia (ESSA) for both exercise science and exercise physiology. It ensures alignment with Exercise and Sports Science Australia (ESSA) standards and integration with existing Allied Health disciplines. This role requires expertise in curriculum development, course design, and quality assurance of learning and teaching, ensuring high-quality educational experiences that meet accreditation and industry standards. Additionally, the position leads accreditation processes, oversees compliance with ESSA requirements, and drives interdisciplinary collaboration to enhance education, research, and clinical practice. A strong commitment to advancing the field of exercise physiology through innovative teaching and research is essential.

A key responsibility is the recruitment, mentoring, and leadership of academic staff to build a strong team supporting program delivery and research. The position oversees accreditation reporting, student support, and industry engagement, working with external stakeholders to establish partnerships and clinical placement opportunities. In addition, the role leads research initiatives in Exercise Physiology, securing funding, supervising research students, and contributing to national and international advancements in the field.

This position also plays a critical role in program promotion, stakeholder engagement, and resource management, collaborating with the Executive Dean, Deputy Dean and Faculty leadership to ensure the program's long-term growth and impact. Responsibilities include overseeing budget planning, advocating for necessary resources, and maintaining compliance with university policies and accreditation requirements. Through leadership in education, research, and professional engagement, the role enhances the reputation and success of Exercise Physiology at Bond University.

Reporting Relationship:

This position reports to the Deputy Dean of the Faculty of Health Sciences & Medicine:

**Selection Criteria:**

- A PhD in Exercise Physiology or a closely related discipline and full certification as an Exercise Physiologist (or be eligible to apply) with Exercise and Sports Science Australia.
- Demonstrated experience in curriculum development and course design for exercise physiology and exercise science programs, ensuring alignment with accreditation requirements and industry standards.
- Proven ability to implement and oversee quality assurance processes for learning and teaching, including instructional best practices, assessment strategies, and continuous program improvement.
- Proven ability to develop, implement, and continuously improve curriculum and ensure alignment with professional standards and accreditation requirements.
- A strong track record of research excellence in Exercise Physiology, including publications, securing research funding, and contributing to the discipline at a national and/or international level.
- Experience in building effective collaborations with key sector providers and establishing student placement opportunities. Experience in academic administration, including budget preparation, resource management, and strategic planning.
- Proven ability to promote and market academic programs, engaging with potential students and stakeholders, and representing the program at events.

Competency	Responsibility
Curriculum Leadership	<ul style="list-style-type: none">• Lead the design, development, and implementation of the clinical exercise physiology program.• Collaborate with relevant stakeholders to ensure curriculum development and course design for exercise physiology program align with accreditation requirements, industry standards, and University values.• Implement and oversee quality assurance processes for learning and teaching, including instructional best practices, assessment strategies, and continuous program improvement.• Collaborate with the Associate Dean, Learning and Teaching to ensure quality curriculum and assessment tasks that are aligned with university expectations.• Provide oversight of support for students experiencing academic difficulties.

	<ul style="list-style-type: none"> Implement strategies to ensure program delivery aligns with University values.
Administration & Resource Management	<ul style="list-style-type: none"> Advise the Executive Dean, Deputy Dean, and Faculty Business Director on resources required for successful program delivery, including staffing, facilities, and technological needs, with a focus on recruiting and building a team of academic staff to support growth, and curriculum and research activities. Develop and maintain processes for effective and transparent delegation of responsibilities, ensuring workload balance and accountability within the team. Lead the recruitment, onboarding and ongoing development of academic staff within the program, while proactively managing staff performance, professional development, and workplace culture.
Student Affairs	<ul style="list-style-type: none"> Collaborate with faculty leadership, including Associate Dean, Student Affairs and Service Quality, to ensure appropriate entry requirements and monitor student recruitment, retention, and performance. Provide oversight of support for students experiencing academic difficulties. Implement strategies to ensure program delivery aligns with University values.
Quality Improvement	<ul style="list-style-type: none"> Continuously monitor and assess course quality, implementing corrective actions based on feedback and evolving standards. Ensure that academic staff meet expected standards of qualification and professional registration and support their ongoing professional development. Lead and engage with industry and consumer advisory groups to ensure curriculum relevance and quality.
Accreditation	<ul style="list-style-type: none"> Lead the liaison with Faculty staff to ensure timely completion of accreditation reporting obligations. Develop, review, and continuously improve the program to meet and exceed relevant Australian and international accreditation standards. Maintain student records and actively monitor, report and respond to student and graduate feedback to drive program improvement.
Marketing & Promotion	<ul style="list-style-type: none"> Lead and collaborate with internal and external stakeholders to develop and execute effective marketing strategies for program promotion. In collaboration with other staff such as Associate Dean External Engagement, represent the program at academic, professional, and community events to enhance visibility and engagement. Collaborate with marketing teams to ensure accurate, up-to-date information and promote the program's success and impact. Engage with Bond Sport to work collaboratively on embedding a working relationship to assist Bond athletes, and also in identifying commercial and partnership opportunities
Research	<ul style="list-style-type: none"> Provide leadership in disciplinary research, working with academic colleagues and industry to facilitate collaborative research initiatives and attract external funding. Maintain an active and growing research program, developing a clear strategy aligned with Exercise Physiology and the program's goals. In collaboration with others such as other discipline staff, Associate Dean, Research, lead research activities relevant to Exercise Physiology, including supervising and mentoring of junior staff and research students.
Finance	<ul style="list-style-type: none"> Oversee budget preparation, resource allocation, and financial accountability to ensure effective program delivery.

	<ul style="list-style-type: none"> • Approve and monitor operational budgets for subject coordinators, ensuring alignment with program needs and financial targets.
Understanding of Quality Assurance	<ul style="list-style-type: none"> • Staff should demonstrate an understanding of the principles of quality assurance and continuous improvement as they apply at Bond University. • Staff are expected to demonstrate an ongoing commitment to the Bond University Strategic Plan, university policy and to our quality assurance processes.
Understanding of Cultural Sensitivity	<ul style="list-style-type: none"> • Staff will come into contact with staff and students from a variety of cultural backgrounds. It is expected that mutual respect, cultural awareness and cultural sensitivity will form the basis of the professional working relationship. • Staff are encouraged to attend a cultural sensitivity workshop to further enhance and develop cultural awareness and cultural sensitivity skills.
Understanding of WHS Responsibilities	<ul style="list-style-type: none"> • Maintain a safe workplace and follow safety directions and internal controls. Alert your Manager of WHS risks and be vigilant in observing safe practices. Understand WHS requirements in your work area. • All managers of staff are required to conduct risk assessments and implement controls accordingly as well as action safety audit results within the directed time frame. • Awareness of, and accountability for, WHS responsibilities in the work area and for the staff and contractors under your control (if applicable).

Note - the successful applicant will be required to produce a certified copy of their highest qualification received prior to commencement of duty.

It is not the intent of this position description to limit the scope of this position in any way but to give an overview of this role at Bond University. You may at times be required to work at other tasks and areas as directed by the Management.