



**Clinical Supervisor (Senior Teaching Fellow)
Bond University Health and Wellness Clinic**

Position Description

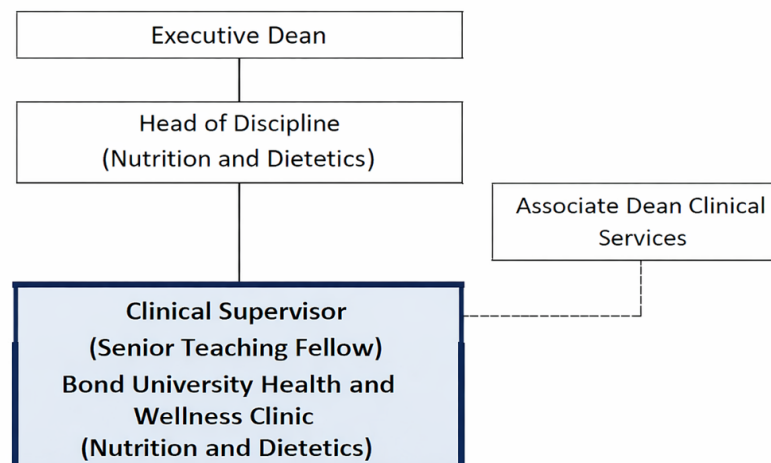
The duties and responsibilities of this position may include each of the itemised activities with specific expectations negotiated from time to time with the Executive Dean / Associate Dean – Clinical Services / Head of Discipline Nutrition and Dietetics.

INTRODUCTION

The Clinical Supervisor (Senior Teaching Fellow) is expected to contribute to the clinical supervision, teaching and service activities of the Faculty and University. The primary teaching and supervision responsibilities are focused on Nutrition and Dietetic students undertaking placements within the Bond University Health and Wellness Clinic (BUHAWC). This includes direct supervision, teaching of practical skills, and support for student learning and development in a clinic setting. Additional teaching responsibilities may be assigned at the discretion of the Head of Discipline of Nutrition and Dietetics. The individual will have industry knowledge and practical experience in Nutrition and Dietetics, and the ability to apply these professional skills into the program and student experience.

REPORTING RELATIONSHIP

This position reports to the Head of Discipline – Nutrition and Dietetics:



DUTIES AND RESPONSIBILITIES

The Clinical Supervisor (Senior Teaching Fellow) is expected to contribute significantly to the Program's clinical supervision and teaching delivery. Key responsibilities include:

1. Clinical Supervision and Practice

- Supervise and support students on placement at BUHAWC, including assessment, feedback, and progress reviews using designated platforms.
- Provide direct dietetic services at BUHAWC, without student engagement, when required to ensure continuity of care.
- Conduct student inductions and ensure safe use of clinical equipment.
- Liaise with Nutrition and Dietetic staff and the BUHAWC manager to facilitate and coordinate day-to-day operations of the Nutrition and Dietetics clinic.

2. Clinical Governance and Service Delivery

- Develop and review clinical services and treatment plans based on evidence-based practice in the context of clinical support and service delivery.
- Maintain accurate clinical documentation in line with professional and institutional requirements.
- Manage client caseloads and ensure timely, effective service delivery.
- Handle escalated clinical issues and client complaints per university policy.
- Ensure compliance with Nutrition and Dietetic practice guidelines, as well as BUHAWC and university policy and procedures.
- Maintain open and appropriate communication about student progress and performance with students, MNDP subject coordinators, MNDP Program practice educators, clinical educator and external placement sites.
- Work in alignment with the nutrition and dietetics services weight neutral approach to service delivery.
- Participate in mandatory Bond Dietetics supervisor training annually and engage in additional supervision training and professional development.
- Contribute to and advocate for a positive learning environment for students which values inclusion and diversity and promotes student wellbeing and transformational learning.

3. Interdisciplinary and Community Engagement

- Facilitate interdisciplinary learning and care within BUHAWC.
- Engage with local clinicians and organisations to support client referrals.
- Participate in professional and community service, including contributions to relevant societies.
- Support and promote student and staff research activities within the clinic.
- Foster a high performing positive work environment

4. Teaching and Learning

- Deliver high-quality teaching at undergraduate and/or postgraduate level, including tutorials, workshops, and demonstrations.
- Provide academic support and consultation to students.
- Participate in curriculum development and teaching innovation.
- Supporting and marking assessment.

5. Administration and Institutional Contribution

- Contribute to Faculty, School, and BUHAWC meetings and committees.
- Participate in marketing, recruitment, and promotional activities.
- Liaise with university staff regarding student performance and clinic operations.
- Track and report clinical metrics and outcomes to the BUHAWC operations group.
- Uphold student, staff, and client confidentiality and welfare.

OTHER DUTIES AS DIRECTED

Under the direction of the Executive Dean, Associate Dean – Clinical Services or Head of Discipline, you may be required to complete the 'Foundations of University Learning and Teaching' subject conducted by Bond University and complete the Nutrition and Dietetic Clinical Supervisor Training before supervision of students within BUHAWC.

The Executive Dean, Associate Dean – Clinical Services or Head of Discipline may allocate additional duties within a staff member's skill, competence and training in consultation with the Head of Discipline.

PROFESSIONAL DEVELOPMENT

To support high-quality clinical education and supervision, the staff member is required to complete Bond University's Nutrition and Dietetics Clinical Supervisor Training before supervising students within BUHAWC, unless this training has already been completed. Ongoing engagement in professional development activities relevant to clinical education and Nutrition and Dietetic practice and professional accreditation is also expected.

RELEVANT EDUCATIONAL QUALIFICATIONS

A Clinical Supervisor (Senior Teaching Fellow) is expected to have completed four years of tertiary study or equivalent.

UNDERSTANDING OF QUALITY ASSURANCE

A Clinical Supervisor (Senior Teaching Fellow) should demonstrate an understanding of the principles of quality assurance and continuous improvement as they apply at Bond University.

Staff are expected to demonstrate an ongoing commitment to the Bond University Strategic Plan, university policy and to our quality assurance processes

UNDERSTANDING OF CULTURAL SENSITIVITY

A Clinical Supervisor (Senior Teaching Fellow) will come into contact with staff and students from a variety of cultural backgrounds. It is expected that mutual respect, cultural awareness and cultural sensitivity will form the basis of for a professional working relationship.

Staff are encouraged to attend a cultural sensitivity workshop to further enhance and develop cultural awareness and cultural sensitivity skills.

UNDERSTANDING OF WHS RESPONSIBILITIES

Maintain a safe workplace and follow safety directions and internal controls. Alert your Manager of WHS risks and be vigilant in observing safe practices. Understand WHS requirements in your work area.

All managers of staff are required to conduct risk assessments and implement controls accordingly as well as action safety audit results within the directed time frame.

Awareness of, and accountability for, WHS responsibilities in the work area and for the staff and contractors under your control (if applicable).



Selection Criteria: Clinical Supervisor (Senior Teaching Fellow)
Bond Health and Wellness Clinic (Nutrition and Dietetics)

OVERVIEW OF THE ROLE

In this position, the Clinical Supervisor, Senior Teaching Fellow will provide supervision, guidance, and support to students undertaking clinical placements at the Bond University Health & Wellness Clinic. This role involves overseeing the daily activities of students, ensuring compliance with healthcare regulations, and contributing to the development and implementation of treatment plans for clients. The position will play a crucial role in enhancing the clinical competencies of Nutrition and Dietetics students while working collaboratively with a dynamic and interprofessional, team, including clinic manager and Associate Dean - Clinical Services.

SELECTION CRITERIA

1. Relevant industry knowledge and experience.
2. Accredited Practising Dietitian (APD) status with Dietitians Australia.
3. Demonstrated proficiency and experience in Nutrition and Dietetic client service delivery (including screening, assessment, intervention, and evaluation) underpinned by a high level of theoretical knowledge and application of evidence-based care, particularly in managing complex health and physiological disorders across diverse client populations.
4. Experience supervising Nutrition and Dietetic students, including providing feedback, facilitating reflective practice and supporting competency development.
5. Ability to work autonomously whilst displaying a strong commitment to work in a team environment, including the demonstrated ability to confidently and effectively work with colleagues in the Nutrition and Dietetics program.
6. Demonstrated ability to meet deadlines, effectively manage varying workloads, and respond to changing priorities as required.
7. Demonstrated high-level communication skills.
8. Demonstrated commitment to supporting inclusion and diversity through culturally and socially responsive practice and actively contributing to inclusive dietetic services for clients and inclusive learning environments for students

DESIRABLE CRITERIA

- Experience coordinating or contributing to interdisciplinary care models or case conferencing.
- Previous experience supporting curriculum development, teaching innovation, or clinical education research.
- Experience in planning and coordinating student supervision and patient care within a teaching clinic.
- Previous experience applying a weight neutral and/or weight inclusive approach to the dietetic care of clients.