



**BOND
UNIVERSITY**

SENIOR TEACHING FELLOW OCCUPATIONAL THERAPY

CANDIDATE INFORMATION PACK



**Bond Institute
of Health & Sport**

CONTENTS

BOND UNIVERSITY	4
THE POSITION	11
THE LOCATION	14
NEXT STEPS	15

As Australia's first private non-profit University, Bond University seeks to be recognised internationally as a leading independent university, imbued with a spirit to innovate, a commitment to influence and a dedication to inspire tomorrow's professionals who share a personalised and transformational student experience.



BOND UNIVERSITY

In 1989, Bond was established with the vision of delivering educational excellence that satisfied the highest international standards.

Decades later, this remains at the forefront of the University's ethos, paired with our commitment to offer a student experience that benefits and transforms every graduate. Today, students, their experiences, and their ambitions remain at the heart of the University's every decision, action and innovation.

MISSION

As Australia's first private non-profit university, Bond University seeks to be recognised internationally as a leading independent university, imbued with a spirit to innovate, a commitment to influence and a dedication to inspire tomorrow's professionals who share a personalised and transformational student experience.

THE BOND DIFFERENCE

University is built on an ethos of being different and independent. Since its foundation in 1989, the University has achieved beyond expectations, rising to every challenge with an unbridled spirit of determination, innovation, excellence, and strong sense of community.

Our independence as Australia's first private, non-profit university, allows us to determine our self-destiny and provides us with the freedoms to do things differently.

This spirit of independence is an essential part of Bond's DNA that is embedded in the curriculum of our programs and guides the personal and professional development of our students.

Our people are at the core of Bond University. The outstanding collegiate experience is designed to create opportunities for students, staff and our partners to develop and progress, amplifying social connection and personal enrichment.

Our students are supported to develop their abilities for critical and independent thought, and self-analysis. Our academics are at the forefront of knowledge generation in their fields. Our support services are designed to foster wellbeing and allow our community to forge personal connections that endure throughout their lifetime.

Our campus life and the transformative student experiences that it enables – in education, discovery, social connection, sport, and other pursuits – are the hallmark of a Bond University education. Our people are enriched by an understanding of the diversity and strength that exists within our community of engaged students who each bring their own experiences and understandings. We recognise and celebrate individual cultures and assist with the achievement of individual ambitions.



Australia's #1 university for student experience for 16 years (Good Universities Guide 2006-2022)



An independent, not-for-profit university



Personal attention and abundant opportunities



Australia's lowest student-to-teacher ratio of 11:1



Accelerated, industry-focused programs

Academic Programs

Bond University offers a broad selection of undergraduate degrees and postgraduate qualifications through its four faculties:

- Faculty of Health Sciences & Medicine
- Bond Business School
- Faculty of Law
- Faculty of Society & Design

Each faculty is a leader in its respective field, enhanced by the global standing of its academics, strong engagement with national and international industry sectors and its state-of-the-art facilities.

In addition, Bond University College provides diploma and foundation pathways to undergraduate study, as well as English language programs. Located within Bond University's campus, Bond University College is fully integrated with the University's educational structure and lifestyle.

Research at Bond University

Research is an integral part of Bond's success. The University is home to a number of Research Centres, which are distinguished by their innovative and entrepreneurial commitment and collaboration with regional, national and global industry and government partners.

Drawing on the specialist academic expertise within each faculty and inspired by a culture of research, Bond's capabilities are recognised in areas such as:

- Institute for Evidence-Based Healthcare
- Centre for Urology Research (CUR)
- Clem Jones Centre for Regenerative Medicine
- Tactical Research Unit
- Translational Simulation Collaborative
- Centre for Actuarial and Financial Big Data Analytics
- Centre for Comparative Construction Research
- Centre for Professional Legal Education





THE FACULTY OF HEALTH SCIENCES & MEDICINE

The Faculty of Health Sciences & Medicine (HSM) was established in 2004 making it the youngest faculty in the University. In its 20 years, the Faculty has grown in size, breadth and impact and now offers a range of undergraduate and postgraduate health programs.

HSM Vision Statement

Empowering people to improve health through collaborative, innovative education and research.

The Values of the Faculty are:

- *Integrity*
- *Collaboration*
- *Innovation*
- *Excellence*

HSM supports the Bond mission through education, research and partnerships that provide a transformative educational experience and through the translation of world-class research which influences future policy and practice for the benefit of communities around the world.

Faculty Governance

The Faculty is led by the Executive Dean with direct support from a Faculty Business Director and Deputy Dean. Further support and advice are provided by the Faculty Executive which consists of these positions plus Heads of Programs, Research Centre Directors and Associate Deans. The Medical Program is led by a Dean of Medicine who in turn reports to the Executive Dean. The Faculty Business Director oversees a strong professional staff team that provides support across all areas of the Faculty as below.

Faculty Programs

The Faculty is dedicated to shaping professionals who are distinguished, not just by their superior scientific and clinical skills, but also by their ethics, compassion and humanity. They offer degrees in a range of scientific and health disciplines, including Medicine, Biomedical Science, Exercise and Sports Science, Health Sciences, Healthcare Innovations, Nutrition and Dietetics, Physiotherapy and Occupational Therapy. Each of these disciplines is underpinned by an active research program.

Below are the Faculty's major undergraduate and postgraduate programs:

Undergraduate

- Bachelor of Biomedical Science
- Bachelor of Biomedical Science / Bachelor of Laws
- Bachelor of Exercise and Sports Science
- Bachelor of Health Sciences
- Bachelor of Health Sciences (Honours)
- Bachelor of Medical Studies (Medical Program)

Postgraduate by Coursework

- Doctor of Medicine (Medical Program)
- Master of Nutrition and Dietetic Practice
- Master of Occupational Therapy
- Doctor of Physiotherapy

Postgraduate by Research

- Doctor of Philosophy (PhD)
- Professional Doctorate of Occupational Therapy (OTD)
- Master of Philosophy (Faculty of Health Sciences and Medicine)

Each of the Faculty's undergraduate programs are designed to facilitate employment outcomes for students and provide pathways into one or more of the professionally accredited postgraduate programs aligned to areas of need within the health sector. This reflects a commitment to supporting students to meet their desired career goals and achieve strong employment outcomes. Student satisfaction is high - for the last two years, independent national surveys on the Student Experience have reported above 90 percent satisfaction rates from both the undergraduate and postgraduate health and medical students.

The **Occupational Therapy** program at Bond University commenced in 2016 and has full accreditation with the Occupational Therapy Council (OTC) of Australia and the Accreditation Council for Occupational Therapy Education (ACOTE) in the United States. The program is an extended level 9 master's qualification completed over 6 semesters in 2 years. A key feature of the program is the offering of a clinically focused research pathway and a business focused pathway where students choose to focus on specific areas of interest. Additionally, the program offers a professional doctorate where students build on existing research skills developed during the masters program.

Based in the world class Bond Institute of Sport and Health, Occupational therapy has leading edge teaching spaces including an activity of daily living lab and a work and play skills lab. Conveniently located next to the Robina Train station, within the Robina health precinct including both private, public and community health services. The program has strong links with health, work and disability providers as well as professional organisations such as Occupational Therapy Australia and the World Federation of Occupational Therapists.

Students in the Faculty receive a level of personalised, individual instruction that is simply not possible in larger institutions. This is achieved by working in small groups in lectures, tutorials, laboratories and practical situations.

Problem-based approaches to learning are a core feature of Faculty programs; the knowledge and experience of staff enables these approaches to be contextualised and applied for maximum effect. Professional experience opportunities, a feature of each program, ensure the integration of theory with practice and establish students' connection with prospective employees.

The Faculty is also committed to interprofessional learning and offers a range of experiences for students across disciplines to ensure they appreciate the importance of interprofessional approaches to practice.

Opportunities for students are supported by the strength of engagement with industry partners including public and private health through Queensland Health, New South Wales Health, UnitedCare and Ramsay Health in particular.



The Faculty has strong relationships with a range of smaller private health providers, educational providers and sporting partners enabling relevant and practically-applied experiences for students across the full range of course offerings.

In addition to a strong focus on teaching and learning, the Faculty is also committed to research. This commitment is reflected in the number of research active staff which is increasing and represents approximately one third of research active staff in the University. The Faculty has increased its HDR student load with approximately 90 currently enrolled research Master's and PhD students. Research is distributed across all areas of the Faculty with particular focus on areas represented by Faculty Research Centres and Groups.

HSM's research strengths are clearly defined by the 2018 Excellence in Research for Australia (ERA) results in which our research in the overall Medical and Health Sciences category was scored as "above world standard". Our research in the subcategory Public Health and Health Services received the highest possible ranking of 5 - "well above world standard".

The Faculty hosts a number of major research centres including:

- The Institute for Evidence-Based Healthcare led by Professor Paul Glasziou focuses on 4 significant issues that impact healthcare globally; antibiotic resistance, overdiagnosis, neglected non-pharmaceutical treatments and waste in medical research.
- The Clem Jones Centre for Regenerative Medicine led by Professor Helen O'Neill, was established in 2016 and receives funding sourced from competitive grants and philanthropic donations. Work on Age-Related Macular Degeneration (AMD) has been a major focus of the Centre, funded by the Clem Jones Foundation and an endowment from the Estate of Cora Cutmore that has enabled funding for the Cutmore Distinguished Professorship of Stem Cell Research and research activity within the Centre.

- The Centre for Urology Research led by Professor Russ Chess-Williams works to enhance knowledge of the lower urinary tract and develop new treatments for urinary tract disorders. Centre members work in collaboration with clinical urologists, radiation oncologists, the pharmaceutical industry and fellow researchers at Australian and international institutions on a wide range of pre-clinical models, treatments, and studies relating to the biological function and chemical processes relevant to urinary disease and dysfunction.
- The Tactical Research Unit works to enhance the protection and performance of tactical personnel through pragmatic research, education and advice.
- The Translational Simulation Collaborative is an academic and operational alliance formed by Bond University and Gold Coast Health to deliver better care, improve simulation delivery techniques and develop healthcare practitioners who can use simulation for their everyday quality improvement.

Other academics within the biomedical science and medicine disciplines have diverse research interests. This includes the molecular team who are interested in identifying the underlying molecular mechanisms behind human health and disease. Their work leverages data across genomics, transcriptomics, epigenomics, microbial genomics, and proteomics to conduct targeted and multi-omic investigations into areas such as neurology, human fertility, forensic science, exercise, nutrition, oncology and chemotherapy treatment outcomes. This is currently conducted through in-house standard genotyping and gene expression techniques, next generation sequencing assays (using Oxford Nanopore Technologies MinION sequencing devices), and specialised bioinformatics analyses, as well as through collaborating research teams and institutions. The academics in this group have a range of national and international collaborations.





Faculty Locations

The Faculty has three campus locations – the Health building on main campus and the purpose-designed Bond Institute of Health and Sport (BIHS) precinct, where this position will be based, including the recently completed BIHS North building, complementing the Bond University Clinical Education and Research Centre (BUCERC) located at Robina Hospital.

On the main Bond campus, the Faculty is housed in an architecturally designed, four-storey building which provides access to a wide spectrum of modern teaching and research facilities for staff and students, including lecture theatres, laboratories, seminar / tutorial rooms, clinical skills rooms, offices and meetings rooms.

The award-winning Health building stage two extension was opened in May 2019 and provides excellent facilities for staff and students including expanded space for the Institute for Evidence-Based Healthcare.

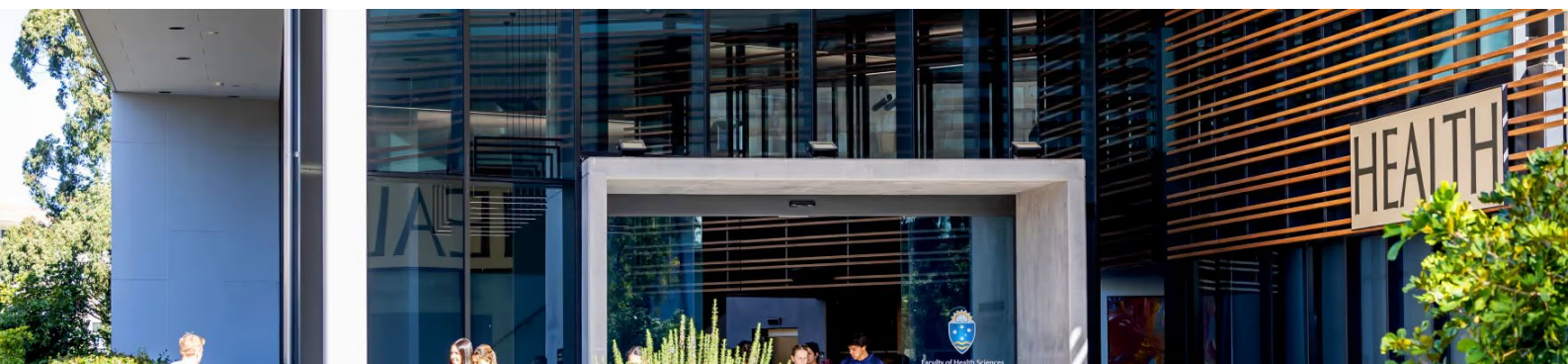
Further expansion of teaching facilities and improved laboratory facilities are currently being planned.

Research with Impact

From health and medical exploration to real-world big data applications, Bond's research portfolio reflects the University's spirit of innovation, entrepreneurship and independence.

Our community of researchers represents a cross-section of accomplished professionals in their chosen field; attracted to Bond by the focused support and resources available to our research academics and students.

Working in partnership with fellow academics, practitioners and students, they are connected to a global research network, striving to know better so that we can do better.



THE POSITION

The duties and responsibilities of this position may include each of the itemised activities with specific expectations negotiated from time to time with the Executive Dean/ Head of Academic Unit.

INTRODUCTION

A **Senior Teaching Fellow** is expected to make a significant contribution to the teaching effort of the Faculty/ School/ Academic Unit and University, particularly at undergraduate and graduate diploma levels, and to engage in activities that develop the scholarly and professional expertise that they bring to their teaching under the guidance and support from more senior academic staff.

The position is consistent with a record of strong teaching performance at the Teaching Fellow level over a sustained period, with consistency of output in teaching, evidence of teaching innovation or evidence of curriculum development.

DUTIES AND RESPONSIBILITIES

Duties and responsibilities of a **Senior Teaching Fellow** include, but are not limited to:

- Conducting lectures, tutorials, workshops, practical classes, demonstrations, field excursions, clinical sessions and other appropriate learning activities as required.
- Ensuring that the quality of teaching delivery and subject content is of the highest standard.
- Teach in accordance with Faculty/ School/ Academic Unit and university policies and procedures, as amended from time to time.
- Providing academic and administrative support to the Faculty/ School/ Academic Unit and University as required.
- Being available for consultation for students and staff.
- Preparing and marking assignments and exams, including supplementary exams.
- Preparing and submitting final grades within the relevant deadlines.
- Act as a subject coordinator, including the supervision of tutors and related planning and coordination responsibilities.
- Preparing high quality subject delivery and learning support materials and ensuring that these are available to students.
- Ensuring that students are adequately informed of the requirements and conduct of learning activities.
- Be actively involved in professional and community service including contributions to relevant professional societies.
- Participate in promotion, marketing and recruitment activities as required.
- Develop and participate in short courses, seminars and conference programs.
- Contribute to Faculty/ School/ Academic Unit meetings and serve on committees as required.
- Work within Faculty/ School/ Academic Unit and University policies and procedures, as amended from time to time.

OTHER DUTIES AS DIRECTED

Under the direction of the Executive Dean/ Head of Academic Unit, you may be required to complete the 'Foundations of University Learning and Teaching' subject conducted by Bond University.

The staff member may seek and/or the Executive Dean/ Head of Academic Unit may allocate additional duties within a staff member's skill, competence and training.

TEACHING LOAD

The normal teaching load for a Senior Teaching Fellow is determined by the Executive Dean/ Head of Academic Unit within Faculty/ School/ Academic Unit policy. With the approval of the Executive Dean/ Head of Academic Unit the teaching workload may be decreased to take into account research and professional activity and achievements, and to recognise increased levels of responsibility.

Unless otherwise specified in their contract of employment, a Senior Teaching Fellow will be expected to teach five out of each six semesters, with the sixth semester designated as a non-teaching semester which may be used in accordance with university policy.

UNDERSTANDING OF QUALITY ASSURANCE

Staff should demonstrate an understanding of the principles of quality assurance and continuous improvement as they apply at Bond University.

Staff are expected to demonstrate an ongoing commitment to the Bond University Strategic Plan, university policy and to our quality assurance processes

UNDERSTANDING OF CULTURAL SENSITIVITY

Staff will come into contact with staff and students from a variety of cultural backgrounds. It is expected that mutual respect, cultural awareness and cultural sensitivity will form the basis of for a professional working relationship.

Staff are encouraged to attend a cultural sensitivity workshop to further enhance and develop cultural awareness and cultural sensitivity skills.

UNDERSTANDING OF WHS RESPONSIBILITIES

Maintain a safe workplace and follow safety directions and internal controls. Alert your Manager of WHS risks and be vigilant in observing safe practices. Understand WHS requirements in your work area.

All managers of staff are required to conduct risk assessments and implement controls accordingly as well as action safety audit results within the directed time frame.

Awareness of, and accountability for, WHS responsibilities in the work area and for the staff and contractors under your control (if applicable).

SELECTION CRITERIA

ESSENTIAL CRITERIA

- A Bachelor level qualification in a relevant field.
- Extensive experience in Occupational Therapy clinical practice.
- Registration with AHPRA as an Occupational Therapist in Australia
- Experience or demonstrated commitment to teaching Occupational Therapy students in a higher education environment.
- Excellent interpersonal, communication and collaboration skills, including an ability to engage effectively with students, stakeholders and colleagues within an inter-disciplinary environment.
- Experience with stakeholder engagement, specifically liaison with healthcare partners.
- Demonstrated commitment to participation in marketing, recruitment or service activities, including participation on committees or in working groups.

DESIRABLE CRITERIA

- Experience in curriculum, resource, program and/or subject design in higher education and managing student progression in Occupational Therapy professional programs.
- A postgraduate qualification in a relevant field.





GOLD COAST, QUEENSLAND

Venture into the Gold Coast's endless playground for some serious fun. Whether you spend your days at a theme park, on the golf course, shopping, learning to surf, dining al fresco or just soaking up the sunshine, one thing's for sure: life has never been so much fun. Fast-track fun on the Gold Coast, where the high-rises are built around superb surf beaches like Surfers Paradise. Dive into lively nightlife, international theme parks and designer boutiques, see the coast from a Spitfire plane and cheer on competitors in the Coollangatta Ocean Swim.

GROWTH AND INNOVATION

The Gold Coast is one of Australia's fastest-growing cities, with new ventures, big business ideas and employment opportunities constantly emerging. We are known for being innovative and entrepreneurial and are the sixth largest city in the country.

Bond students and academics have access to a world-class university experience, but they've also got opportunity right at their fingertips. We count e-commerce giants, tech start-ups and industry disruptors amongst the ever-growing crop of innovative businesses that first found their feet on the Gold Coast.

OUR CULTURE

While we're not the size of Sydney or Melbourne just yet, that just adds to our charm – and our vibrant city environment matches our larger counterparts! There is so much happening on the Gold Coast, with a community event at every turn – the only question is which one you'll pick! Get involved with sport, the arts, local businesses... the list goes on, and that's not to mention our incredible food scene.

OUR COMMUNITY

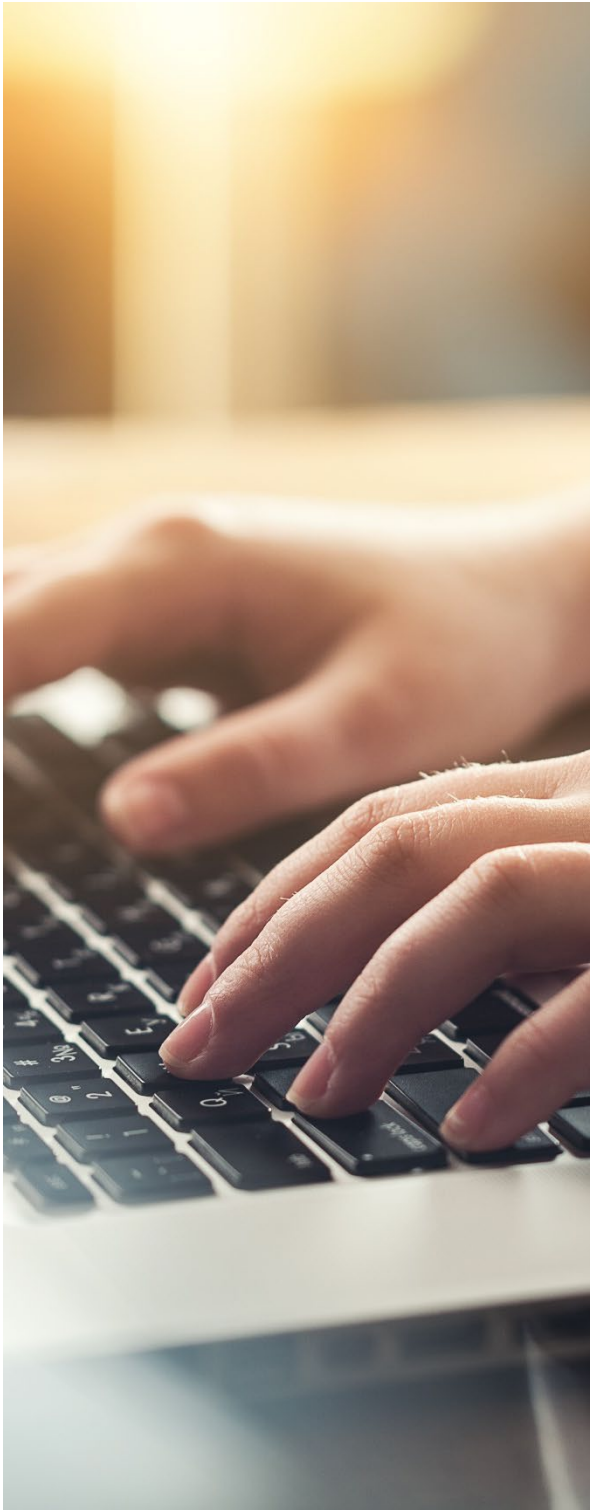
The Gold Coast community is a unique blend of vibrant and laid-back that you'll have to experience for yourself to truly understand. Coming from humble beginnings, we haven't lost our coastal town feel, and we love our surf, sunshine and sport. We are a tightknit community and are always coming up with new ideas to connect with one another.

The Gold Coast community is made up of over 720,000 people from a diverse array of backgrounds. As one of the country's most sought-after places to live, we're expanding every year, but our community remains close-knit and connected.

Explore more about life on the Gold Coast here:

<https://experiencegoldcoast.com/>

<https://bond.edu.au/life-at-bond/life-on-gold-coast>



NEXT STEPS

Initial contact should be made with Ccentric Group, the executive search firm exclusively engaged to assist with the appointment. The relevant Ccentric contacts are as follows:

Kim Gillespie

T: +61 406 551 917

E: king@ccentric.com.au

Pam Lubrainschik

T: +61 452 295 088

E: paml@ccentric.com.au

