

BOND UNIVERSITY

**STAND
OUT**



**BOND
UNIVERSITY**

BOND UNIVERSITY CAMPUS



STAND OUT  **BOND UNIVERSITY**

DESTINATION: GOLD COAST



WEATHER



Spring
September to November
15 - 28°C (59 - 82°F)



Autumn / Fall
March to May
16 - 27°C (61 - 81°F)



Summer
December to February
20 - 31°C (68 - 88°F)



Winter
June to August
9 - 22°C (48 - 72°F)



DESTINATION: GOLD COAST



DISCOVER THE GOLD COAST



**STAND
OUT**



**BOND
UNIVERSITY**

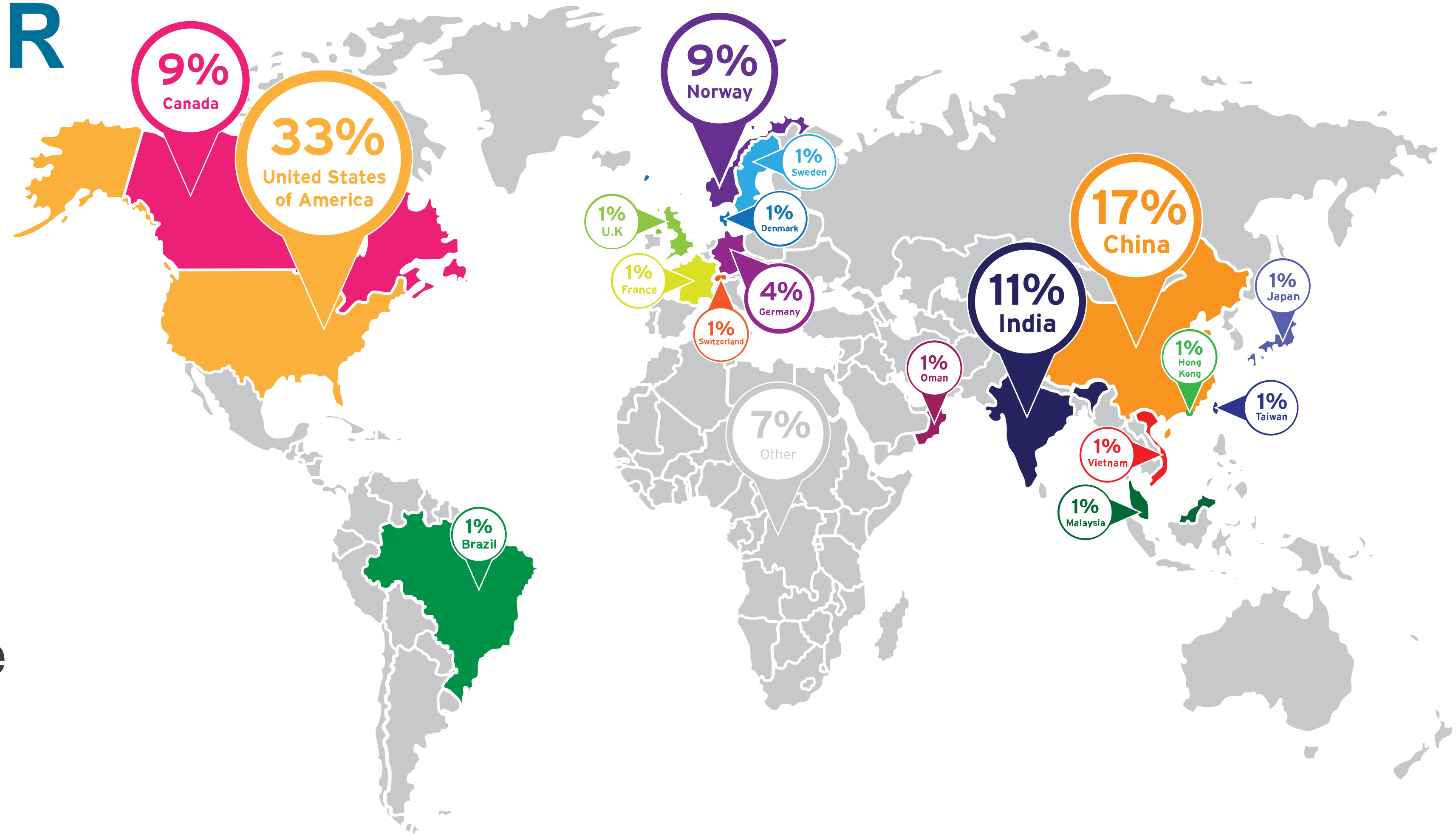
ABOUT BOND

- Australia's first fully private, not-for-profit university
- First student intake in 1989
- Currently 4,500 students
- Gold Coast location
- Global campus – approximately 45% international students from over 90 countries



GROW YOUR GLOBAL NETWORK

Bond's diverse student cohort consists of students from over 90 countries around the world.



**STAND
OUT**



**BOND
UNIVERSITY**



STUDENT EXPERIENCE

in Australia for **FIFTEEN YEARS IN A ROW**
2021 Good Universities Guide

EMPLOYER SATISFACTION

in Australia in **2017 AND 2019**
2019 Quality Indicators for Learning and Teaching



2020 GOOD UNIVERSITIES GUIDE

Overall Quality of Education
Teaching Quality
Learner Engagement
Learning Resources

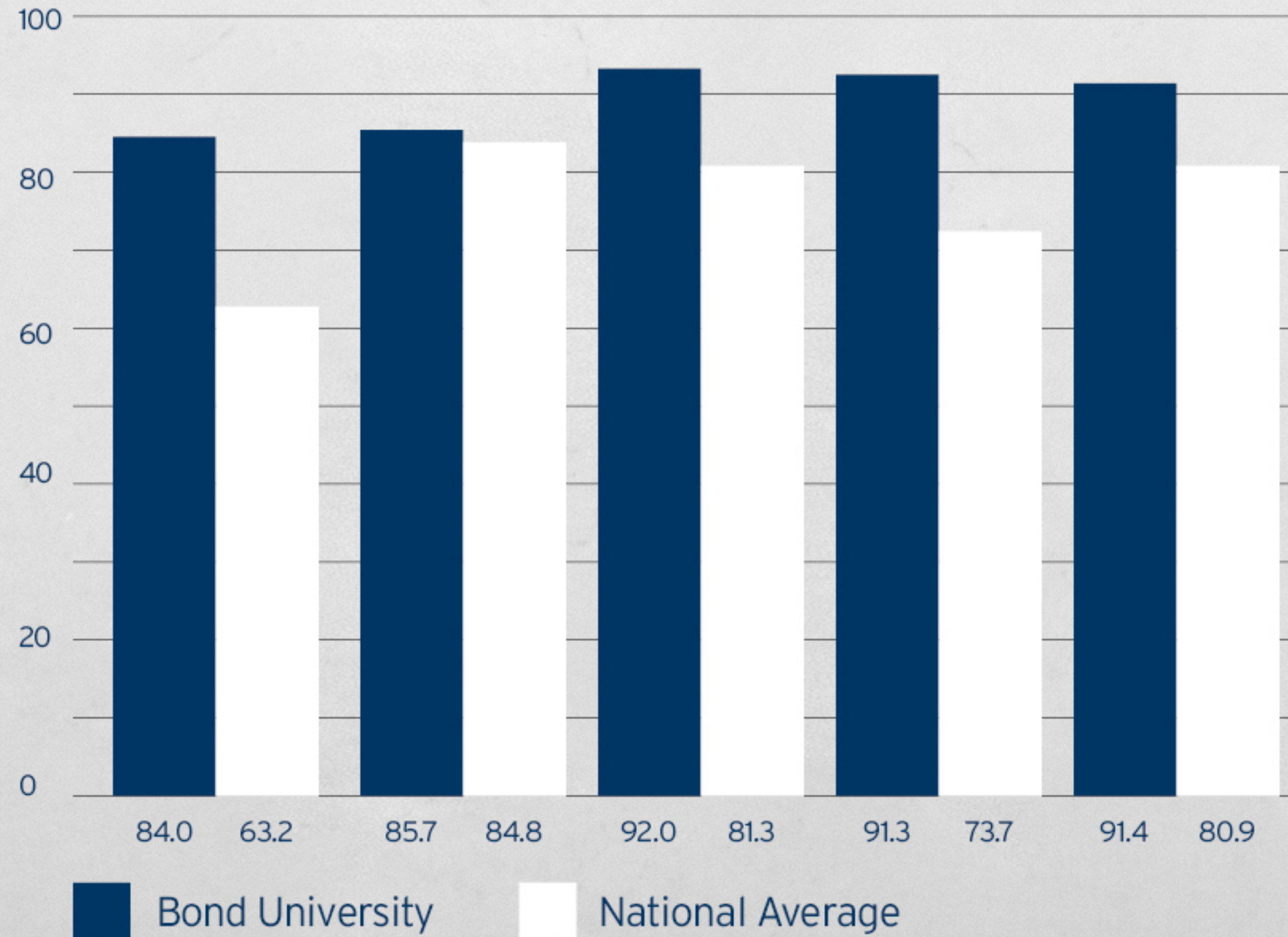
Student Support
Skills Development
Student Retention
Student Teacher Ratio

**STAND
OUT**

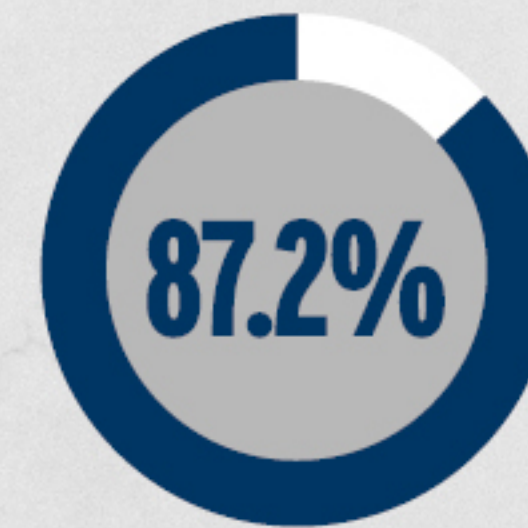


WHY BOND?

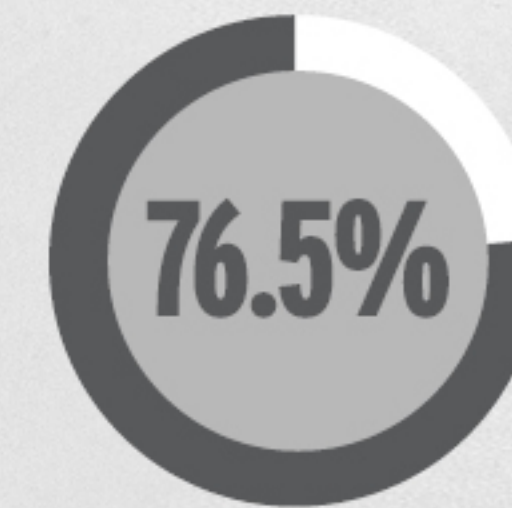
STUDENT EXPERIENCE RATINGS



OVERALL STUDENT EXPERIENCE RATINGS

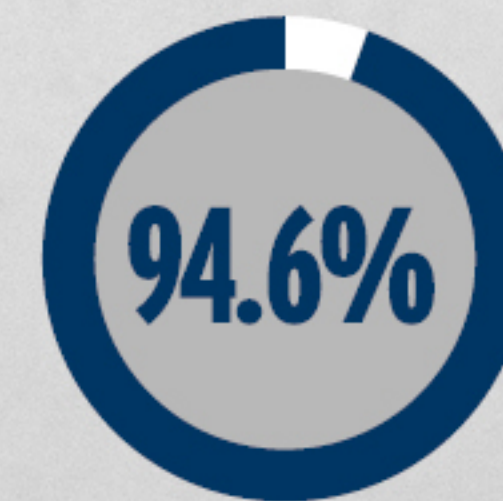


Bond University

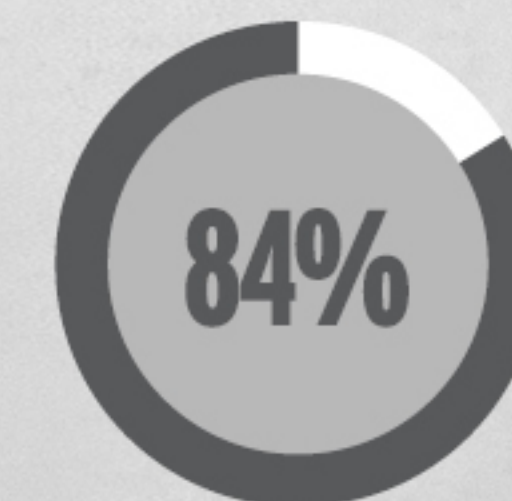


National Average

EMPLOYER SATISFACTION RATINGS



Bond University



National Average

**STAND
OUT**



WHY BOND?



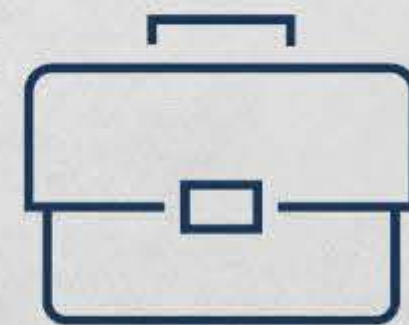
3 FULL SEMESTERS PER YEAR

Finish your degree faster with semesters commencing in January, May and September.

10:1

STUDENT: TEACHER RATIO

Lowest ratio in Australia with small class sizes and engaged academics.



GRADUATE WORK READY

Focus on career development and employability skills to prepare students with key employability skills.

**STAND
OUT**



**BOND
UNIVERSITY**

STUDY OPTIONS



ARCHITECTURE AND
BUILT ENVIRONMENT



HUMANITIES, LANGUAGE
AND INTERNATIONAL



BUSINESS AND
COMMERCE



LAW



COMMUNICATION AND
CREATIVE MEDIA



SOCIAL SCIENCES, PSYCHOLOGY,
COUNSELLING AND CRIMINOLOGY



HEALTH SCIENCES
AND MEDICINE



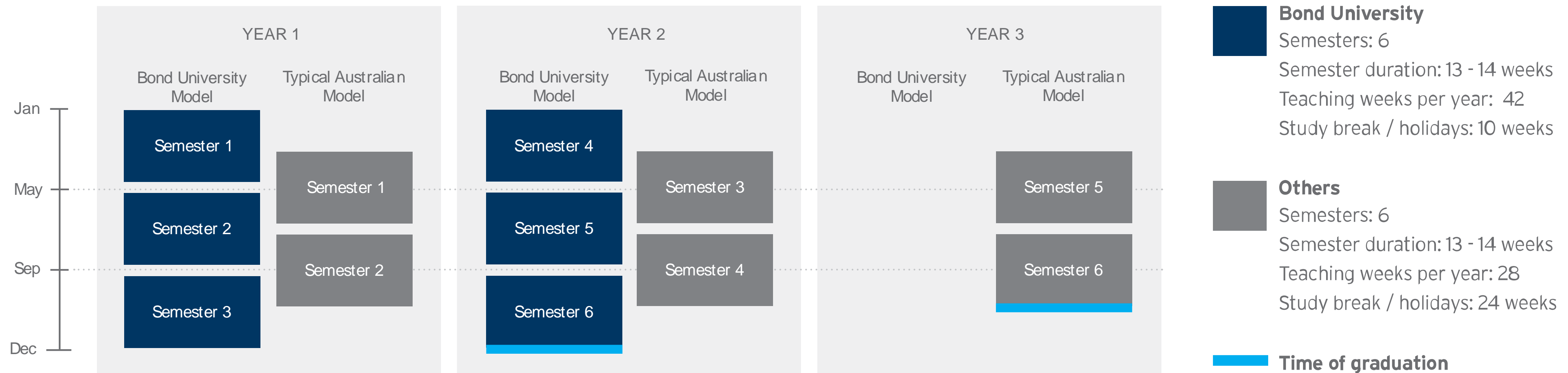
HIGHER DEGREES BY RESEARCH

STAND
OUT



BOND
UNIVERSITY

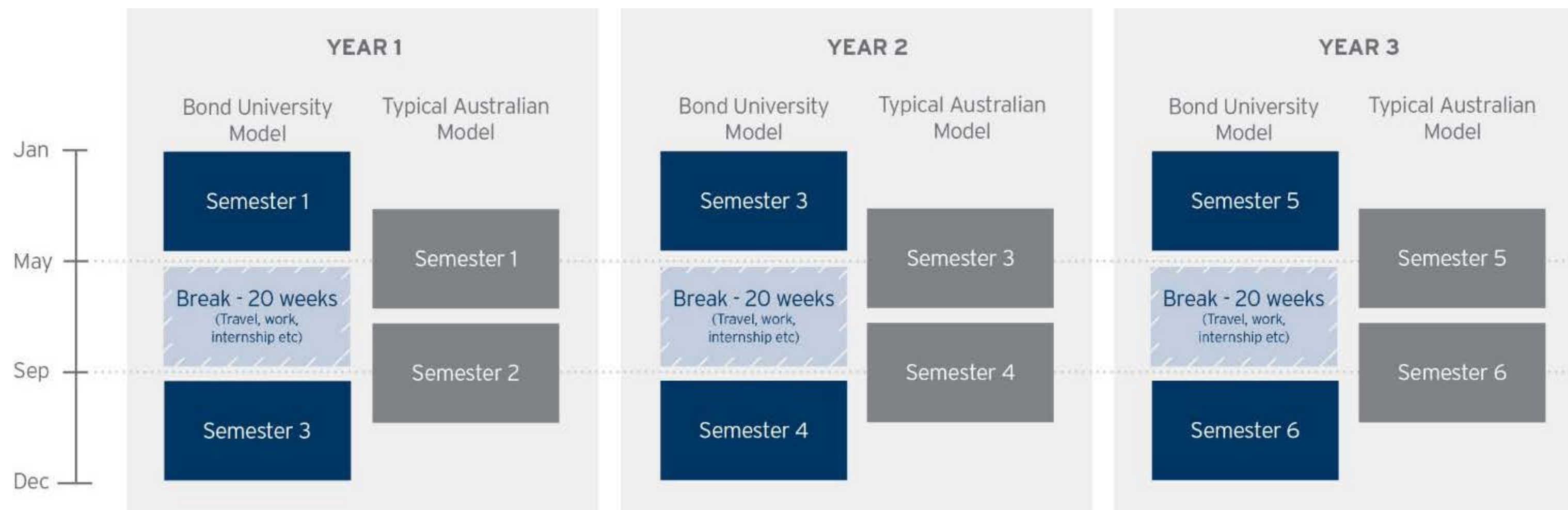
ACCELERATED LEARNING



**STAND
OUT**



3 YEAR PROGRAMS



Designed for international students who wish to study via a two semester model and spread out their degree over 3 years.

Only available for selected undergraduate programs including Bachelor of Business, Bachelor of Commerce, Bachelor of Business Data Analytics, Bachelor of Film and Television and Bachelor of International Relations.

■ Bond University

Semesters: 6

Semester duration: 13 - 14 weeks

Study break / holidays: 24 weeks
(including 20 weeks mid-year break)

Teaching weeks per year: 28

■ Others

Semesters: 6

Semester duration: 13 - 14 weeks

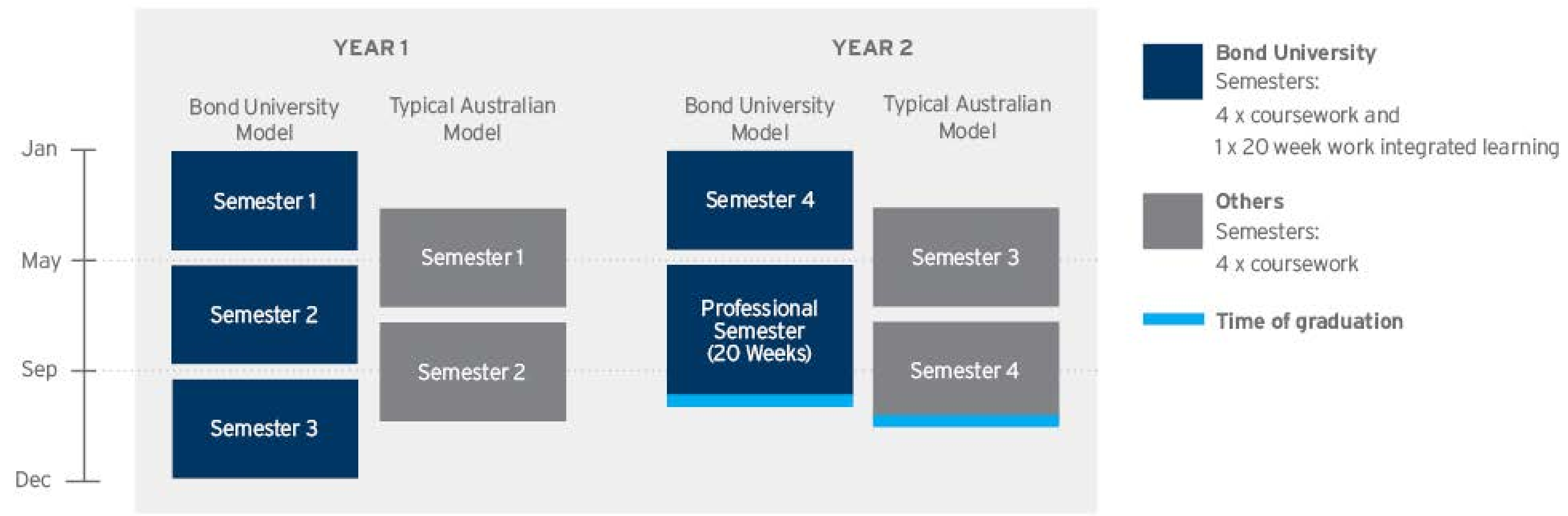
Study break / holidays: 24 weeks

Teaching weeks per year: 28

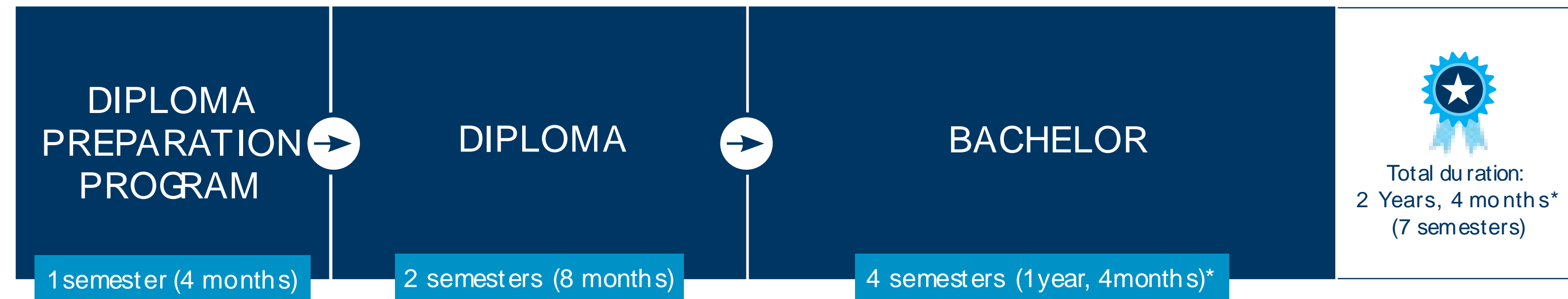
**STAND
OUT**



PROFESSIONAL PROGRAMS



PATHWAYS



STAND
OUT



*The average Bond University undergraduate is two years but may be longer in some areas of study.

CORE CURRICULUM

Bond's Core Curriculum is embedded within all undergraduate programs to instil the soft skills needed to succeed in any discipline

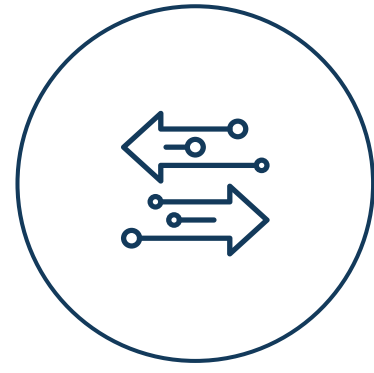
Bond's Core subjects are:

- Critical Thinking and Communication
- Collaboration, Teams and Leadership
- Responsibility, Integrity and Civic Discourse



**STAND
OUT**





BEYOND BOND PROGRAM

Beyond Bond ensures every undergraduate student develops key employability and interpersonal skills through - all available from the first semester.

Activities are:

- Work-based
- Work-related
- Community-based; and/or
- Career exploration experiences

**STAND
OUT**



**BOND
UNIVERSITY**





TRANSFORMER PROGRAM

Australian first program teaching design thinking, creative problem solving and evidence-based decision making.

- This free co-curricular program enables innovation and enhances entrepreneurial skills.
- It brings together students from multi-disciplines to work together, and with industry experts and mentors.

**STAND
OUT**



**BOND
UNIVERSITY**



TRANSFORMER PROGRAM

FUTURE SKILLS, ENTREPRENEURIAL MINDSET AND CAPABILITIES

EXPERIENTIAL
WORKSHOPS



**INTERPERSONAL
SKILLS**

- Self Awareness
- Resilience
- Leadership
- Entrepreneurial Mindset
- Building High Performing Teams
- Pitching Your Idea
- Networking



**TECHNICAL
SKILLS**

- Design Thinking Workshop
- Entrepreneurial Risk Taking Masterclass
- Start up Law Clinics
- Idea to Commercialisation
- Mastering an Online Presence
- Showcasing
- Industry Collaboration



EXECUTION

- Real World Projects
- Student Projects
- Group Projects
- Global Competitions
- Industry Projects
- Start Up Ventures
- Commercialisation



**STAND
OUT**



**BOND
UNIVERSITY**



ENTREPRENEURSHIP AND INNOVATION

At Bond, we've engineered our programs to focus on developing adaptive, tech-savvy and future-focused graduates with a strong entrepreneurial streak.

- Major in Entrepreneurship and Innovation
- Create your own business enterprise
- Develop, pitch and create concepts through internal and international initiatives like Bond Business Accelerator, Transformer, Gold Coast Demo Day and The World's Challenge.

**STAND
OUT**



**BOND
UNIVERSITY**



STUDENT SERVICES



COMPUTER SUPPORT



NYOMBIL INDIGENOUS
SUPPORT CENTRE



SAFETY ON CAMPUS



DISABILITY SUPPORT



PASTORAL CARE



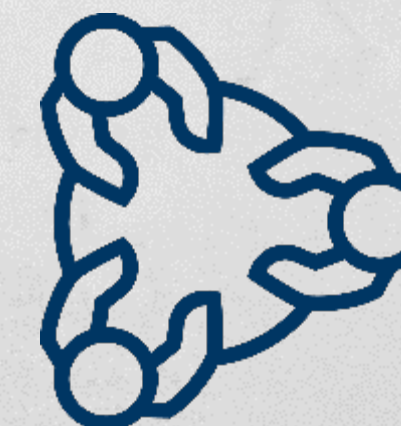
STUDENT LEARNING SUPPORT



MEDICAL SERVICES



PSYCHOLOGICAL SERVICES



LGBTIQ+ SERVICES
AND SUPPORT

**STAND
OUT**



**BOND
UNIVERSITY**

CAMPUS



**STAND
OUT**



**BOND
UNIVERSITY**

CAMPUS



**STAND
OUT**



**BOND
UNIVERSITY**

ABEDIAN SCHOOL OF ARCHITECTURE



ABEDIAN SCHOOL OF ARCHITECTURE



**STAND
OUT**



**BOND
UNIVERSITY**

FACULTY OF SOCIETY & DESIGN

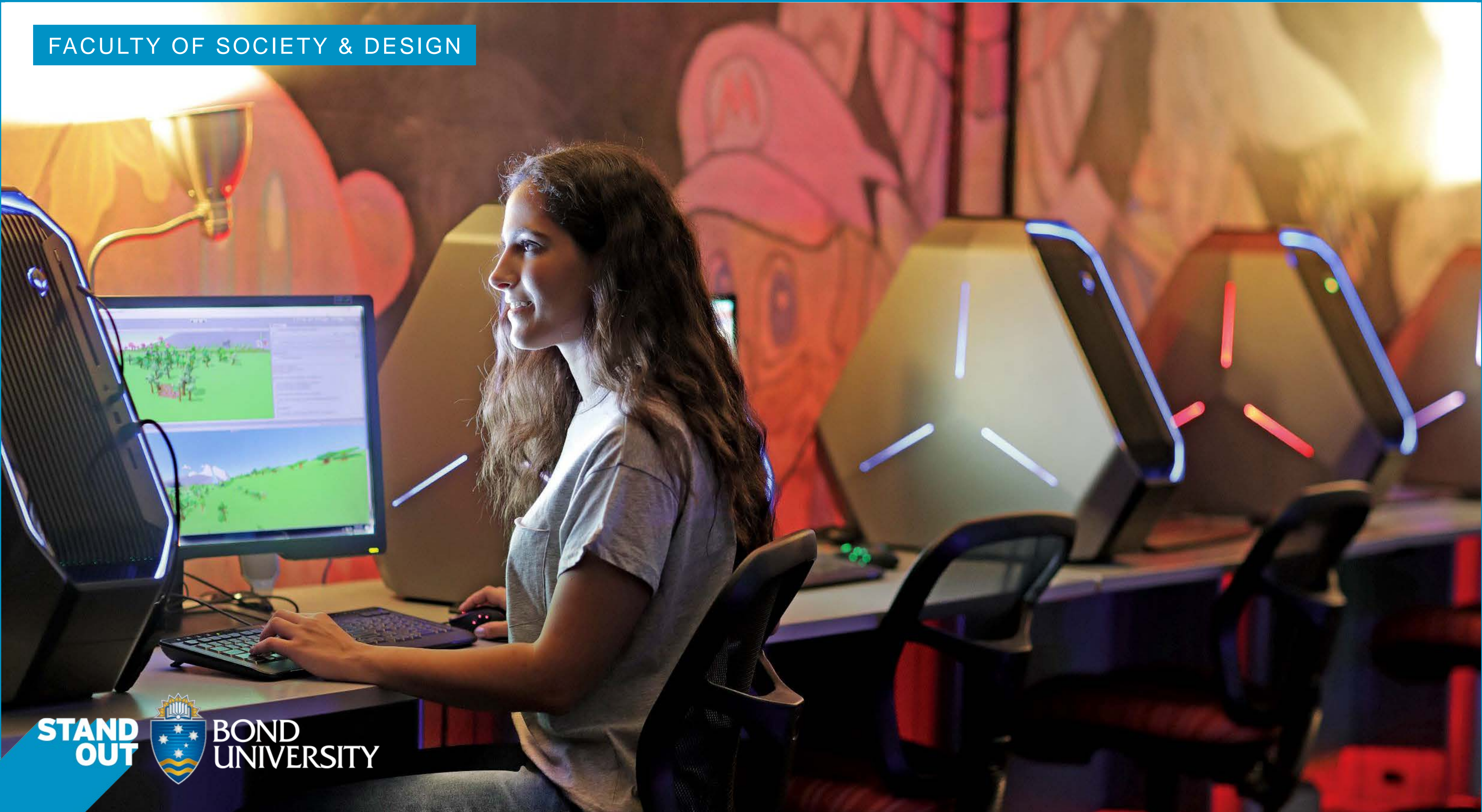


FACULTY OF SOCIETY & DESIGN





FACULTY OF SOCIETY & DESIGN



FACULTY OF LAW



**STAND
OUT**



**BOND
UNIVERSITY**

FACULTY OF LAW



**STAND
OUT**



**BOND
UNIVERSITY**



FACULTY OF HEALTH SCIENCES & MEDICINE



**STAND
OUT**

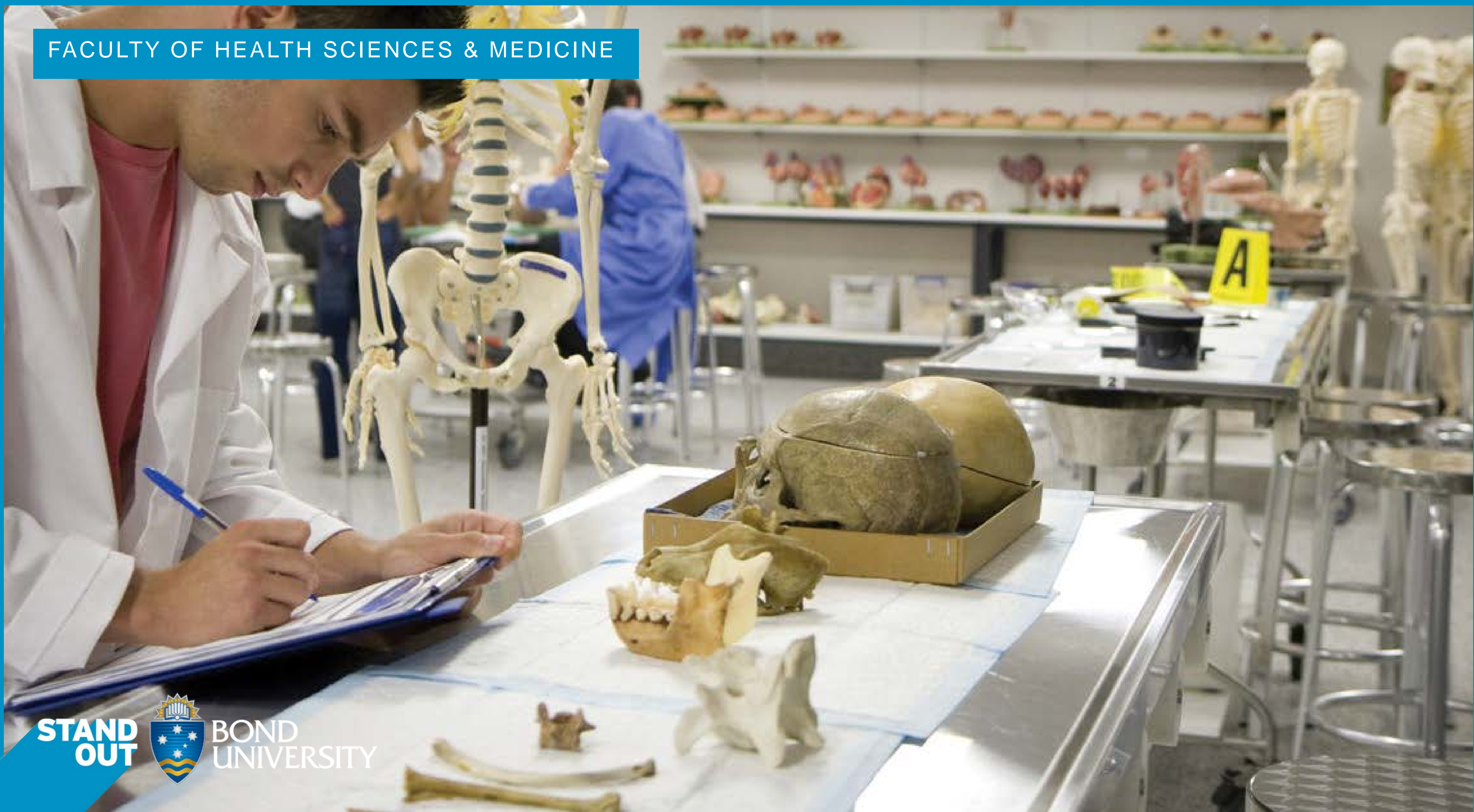


**BOND
UNIVERSITY**

FACULTY OF HEALTH SCIENCES & MEDICINE



FACULTY OF HEALTH SCIENCES & MEDICINE



FACULTY OF HEALTH SCIENCES & MEDICINE



BOND INSTITUTE OF HEALTH & SPORT

BOND UNIVERSITY
BOND INSTITUTE OF HEALTH & SPORT

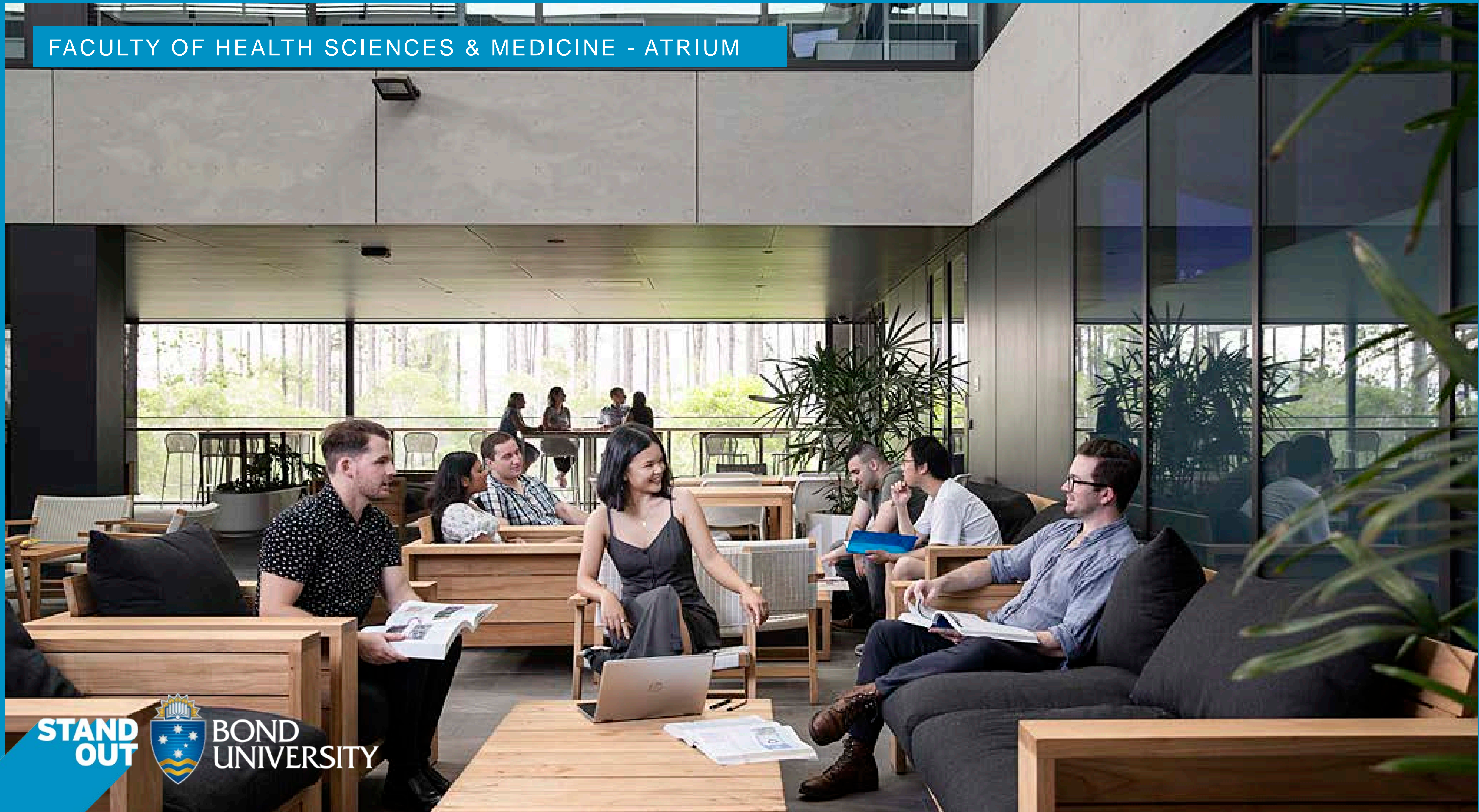


STAND OUT



BOND UNIVERSITY

FACULTY OF HEALTH SCIENCES & MEDICINE - ATRIUM



**STAND
OUT**



**BOND
UNIVERSITY**

BOND BUSINESS SCHOOL



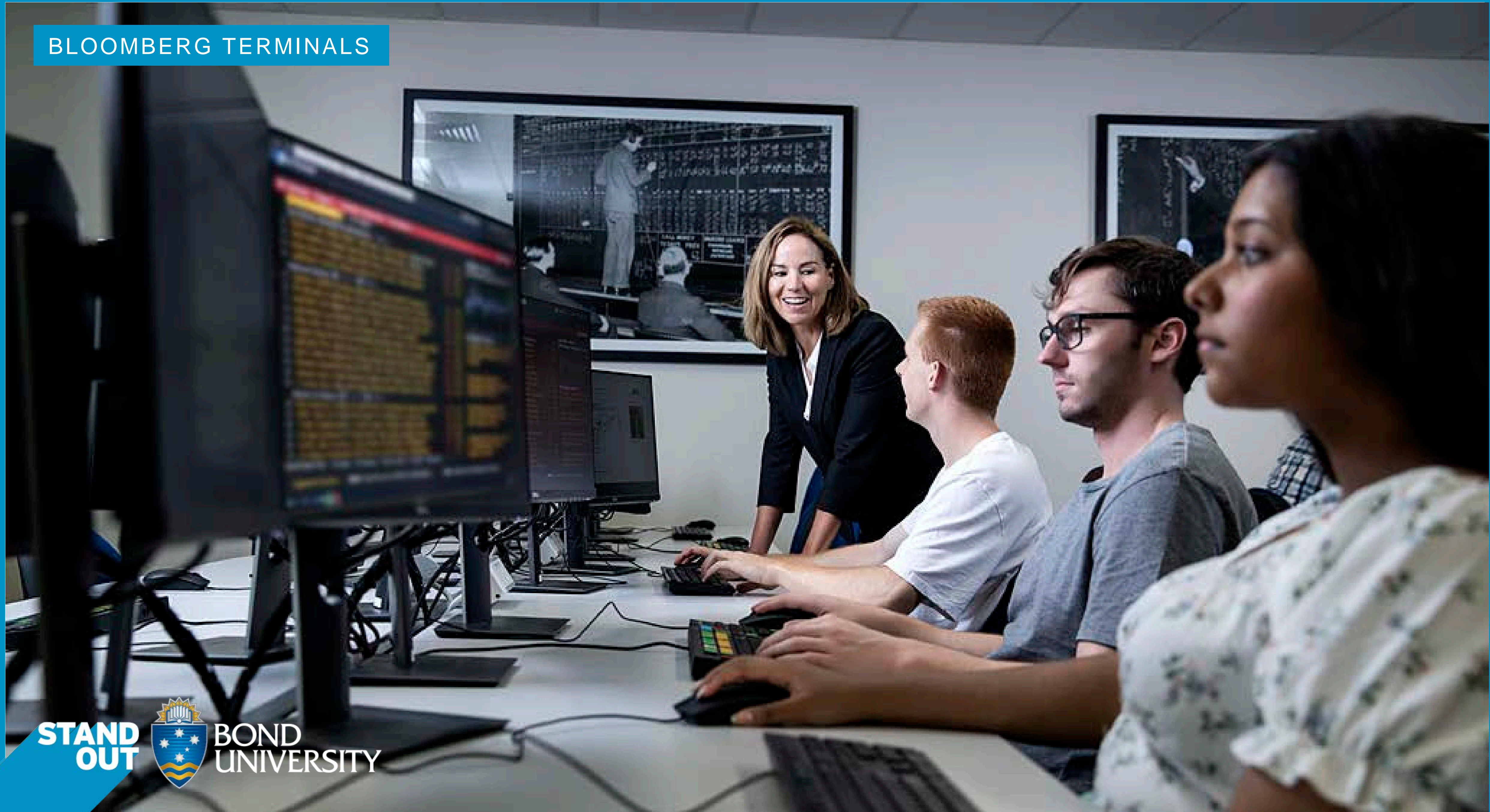


**STAND
OUT**



**BOND
UNIVERSITY**

BLOOMBERG TERMINALS



BOND BUSINESS SCHOOL



BUSINESS COMMONS



SPORTS CENTRE



SPORTS CENTRE



SPORTS CENTRE & SWIMMING POOLS



LIBRARY



STAND OUT  **BOND UNIVERSITY**

MULTIMEDIA LEARNING CENTRE (MLC)



**STAND
OUT**



**BOND
UNIVERSITY**

MULTIMEDIA LEARNING CENTRE (MLC)



TENNIS COURTS



SPORTS FIELDS



**STAND
OUT**



**BOND
UNIVERSITY**

SQUASH COURTS



INDOOR COURTS



**STAND
OUT**



**BOND
UNIVERSITY**

ACCOMMODATION



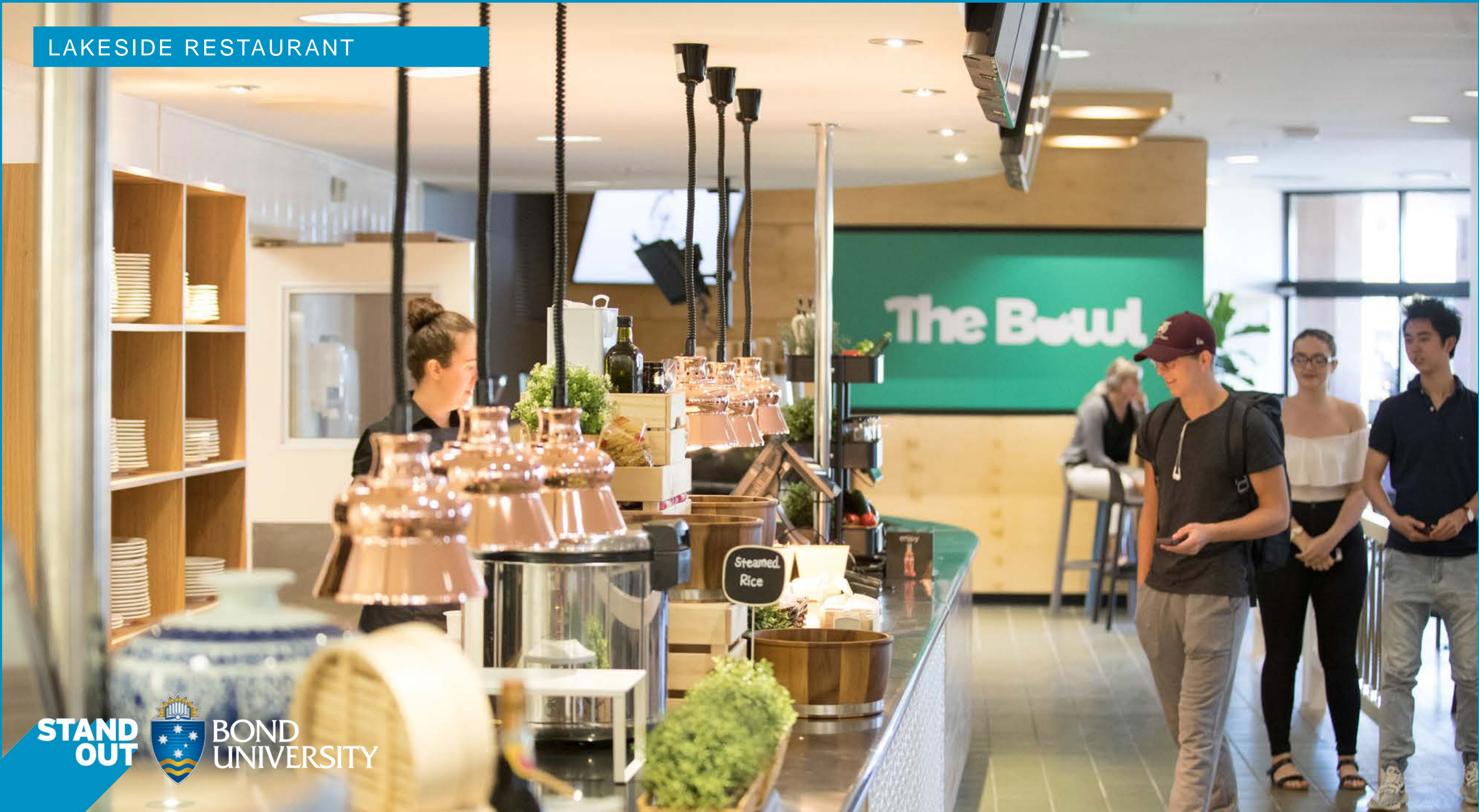
ACCOMMODATION



LAKESIDE RESTAURANT



LAKESIDE RESTAURANT



LAKESIDE RESTAURANT AND BAR



**STAND
OUT**



**BOND
UNIVERSITY**

bond.edu.au

international@bond.edu.au

