

2019 International Student Guide



Welcome



A global campus for citizens of the world.

Living and studying in another country will be one of the most unforgettable experiences in your life.

You'll meet new people, build a global professional network, embrace a different culture and maybe learn a new language. But it is a big decision to make - which is why Bond University is uniquely designed to support our international students through every stage of the overseas study experience.

With less than 5,000 students on campus and one of the lowest student: teacher ratios in Australia, you'll immediately see the benefits of our personalised learning environment, where lecturers know their students by name and understand their individual needs.

Our international cohort represents up to 50% of our student body and come from more than 80 countries worldwide.

Collectively, they bring a unique global perspective to the learning experience, ensuring that our new students are welcomed as a member of Bond's extended family.

We look forward to sharing 'our' Australia with you as we help you bring your ambition to life.

A handwritten signature in black ink that reads "Tim Brailsford". The signature is fluid and cursive, with the first letters of the first and last names being capitalized and prominent.

Professor Tim Brailsford
Vice Chancellor and President

Contents

4	Why Bond?	20	Investing in your Future	42	Faculty of Society & Design
4	Australia's First Private University	21	Scholarships	54	Faculty of Health Sciences & Medicine
5	How Bond Rates	22	Student Support	60	Faculty of Law
6	Destination: Gold Coast	24	Career Development Centre	65	Higher Degree Research
8	Welcome to Bond University	24	Global Alumni Network	66	English Language Requirements
10	Studying at Bond	26	What Can I Study?	67	English Language Test Requirements (UG)
12	Entrepreneurship and Innovation	27	Your Options Explained	68	English Language Test Requirements (PG)
13	Learn by Doing	28	Pathways to Bond University	69	Academic Entry Requirements by Country
14	A Unique Sense of Community	30	Undergraduate Study Options	70	How to Apply to Bond
16	Sport is in our DNA	32	Postgraduate Study Options	72	Key Dates
18	Accommodation	34	Bond Business School		
19	Living on the Gold Coast				



Canadian Juris Doctor student, Anita Kissi is actively involved in the Bond University Student Ambassador Program, a large network of active volunteers who are rewarded for their contribution to the University community.

Why Bond?

Because we do things differently.

For the past 13 years, Bond has received the highest possible ranking for Student Experience in the independent Australian Students Satisfaction Survey.

In other words, the people who know best – our students – say that Bond is the greatest university in Australia.

1

SMALL CLASS SIZES

Our students talk about our small class sizes, and the extra help they get from lecturers who know them by name.

2

ACCELERATED DEGREES

They talk about our three-semester timetable, and the benefits of finishing their degree a year or more ahead of their peers at other universities.

3

GREAT ACCESS

They talk about having access to amazing facilities, greater engagement with industry, meeting people from all over the world, and being part of a global alumni network. But most of all, they talk about the richly rewarding experience of being mentored and supported every step of the way and being presented with life-changing opportunities.

Australia's First Private, Not-for-profit University

On 23 April, 1987, Bond University was given its University status by an Act of the State of Queensland's Parliament.

Modelled on the traditions of the world's best educational institutions to provide an educational experience of the highest international standards, the University continues to be recognised both in Australia and internationally as a leading not-for-profit university, where 100% of tuition fees are reinvested in ensuring our students have access to world-class facilities and learning resources, and learn under the guidance of expert academics.

Bond University is recognised as an accredited Australian university by the Tertiary Education Quality and Standards Agency (TEQSA). Bond's courses for international students are registered with the Commonwealth Register of Institutions and Courses for Overseas Students (CRICOS).

HOW BOND RATES

GLOBAL TOP



UNIVERSITIES

in the Times Higher Education (THE) Rankings of the Best Small Universities in the World

#1

IN AUSTRALIA
FOR STUDENT
EXPERIENCE

rated on the Quality Indicators for Learning and Teaching (QILT) website

★ FIVE STARS 2019 GOOD UNIVERSITIES GUIDE

- ★ Overall Experience
- ★ Teaching Quality
- ★ Learner Engagement
- ★ Learning Resources
- ★ Student Support
- ★ Skills Development
- ★ Student Retention
- ★ Student Teacher Ratio

★ FIVE STARS 2017 QS STAR RATINGS

- ★ Teaching
- ★ Employability
- ★ Internationalisation
- ★ Facilities
- ★ Social Responsibility
- ★ Inclusiveness



ACCELERATED DEGREES

Complete a standard bachelor's degree in two years or a standard master's in one year



93.2% In 2016 overall satisfaction of Bond students
93.2% compared to global average 88.8%



GLOBAL
NETWORK

Students from more than 80 countries worldwide



10:1

Lowest Student: Teacher ratio in Australia of 10:1



TOP 2%

of Business Schools in the world

FAST FACTS*

Australia's first private, not-for-profit university.

4,459 STUDENTS

2,076 INTERNATIONAL STUDENTS

33,153 DEGREES AWARDED

*As of 2018, May Semester.

Destination: Gold Coast

Burleigh Heads
Gold Coast Airport
Byron Bay

Bond University

Broadbeach

Bond University is located on the Gold Coast - Australia's sixth biggest city. International students choose Bond University not only for our quality education, but for the warm climate and the unique mix of natural attractions and sightseeing opportunities right on our doorstep.



Take a surfing lesson at Burleigh Heads Beach



Hike up Mount Warning and catch the sunrise at the top



Take a day trip to Byron Bay, Springbrook or Brisbane



Eat like the locals at Miami Marketta, NightQuarter or The Collective Palm Beach



Get up close and personal with some local furry friends at Currumbin Wildlife Sanctuary



Shop till you drop at Pacific Fair, Harbour Town or Robina Town Centre



Finish up a week of study by heading out to party at Surfers Paradise and Broadbeach



Go to one of the Coast's many music and arts festivals



Get an adrenaline rush at one of the Gold Coast's theme parks



Attend a Gold Coast Titans rugby league or Gold Coast SUNS AFL home game



Surfers Paradise

Brisbane
(1 hour drive)

Main Beach



POPULATION OF MORE THAN
500,000 PEOPLE



AVERAGE TEMPERATURE:
15C - 25C



300 DAYS OF SUNSHINE
A YEAR



57KM OF COASTLINE

Welcome to Bond University



Bond Institute of Health & Sport (located a short 8 minute drive from campus)

Programs and research based at the Institute:

- Exercise and Sports Science
- Nutrition and Dietetics
- Occupational Therapy
- Physiotherapy

**Sustainable Development
Building**

Faculty of Society & Design

Abedian School of Architecture

**Faculty of Health Sciences &
Medicine**

Faculty of Law

Bond Business School

Bus stop

Main Library

Student accommodation



Sports Centre and Swimming Pool

Bond University College

Student accommodation

Lake Orr



Students enjoying a group study session in the Multimedia Learning Centre (MLC), located on Bond University's main campus.

Studying at Bond

GRADUATE SOONER. ACHIEVE YOUR GOALS FASTER

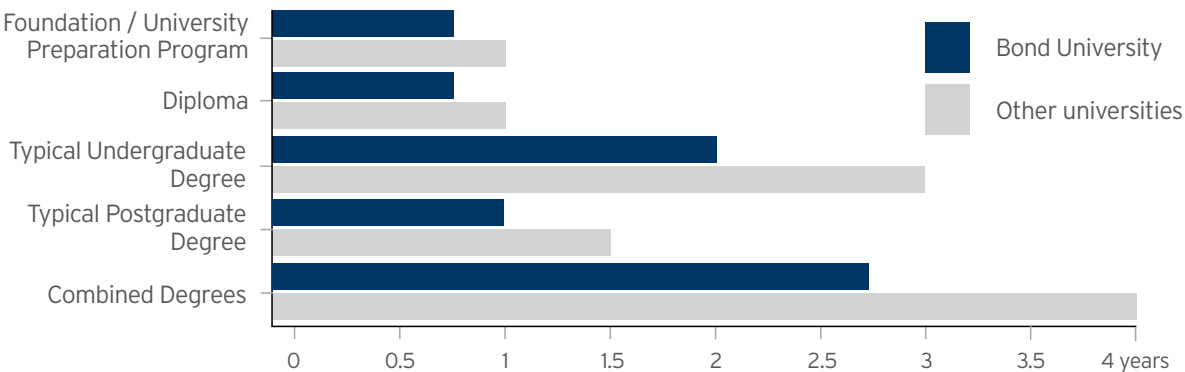
Bond's teaching calendar is based on three semesters per year, rather than the usual two. Our programs start earlier in the year, with shorter breaks between each semester so you can graduate much sooner. You could also complete a combined degree or an undergraduate and postgraduate degree in less time than it would take to complete a single degree at another university.

Our semester start dates are in January, May and September to give you more flexibility about when you start your degree.

MORE INTENSIVE, PERSONALISED CLASSES

There is a big difference between being one of 25 students in a class and a face in a crowd of up to 500.

Bond's student: teacher ratio is one of the lowest in the country and our lecturers' doors are always open. This means you'll get more personalised, hands-on advice and support with your studies.



A portrait of Jamal Rahim, a young man with dark hair and a slight smile, wearing a dark blue ribbed sweater. He is standing outdoors with green foliage and a building in the background.

JAMAL RAHIM

Master of Project Management (Professional)
India

"I would strongly recommend studying at Bond, especially for international students. The low student to teacher ratio ensures every student gets special attention and help from the Professors. As Bond has many international students, the staff are aware of the diverse methods of learning and provide guidance so that each student is able to understand the content. Bond also provides several workshops where international students can get additional support."

BOND'S UNIQUE CORE CURRICULUM FOR UNDERGRADUATE STUDENTS

At Bond University, we recognise that people have many careers throughout their lives where they require the soft skills to problem solve and apply their education to a variety of occupations. As a result, in every undergraduate degree (including our Higher Education Diplomas), we have embedded our three Bond Core subjects plus our professional development and community engagement program, Beyond Bond.

This Core Curriculum teaches skills that are highly valued in contemporary organisations and will be essential to your personal and professional life in any current or future profession, regardless of discipline.

Bond's Core subjects are:

- Critical Thinking and Communication
- Leadership and Team Dynamics
- Ethical Thought and Action

bond.edu.au/core-curriculum

BEYOND BOND

Beyond Bond ensures every undergraduate student develops key employability and interpersonal skills through your choice of internships, volunteering, participation in global competitions and a broad range of extracurricular professional activities - all available from your first semester.

Administered by the Career Development Centre, this free program is personalised and tailored to your specific interests and career goals, presenting a life-learning experience like no other.

Beyond Bond is a core requirement of all Bond's undergraduate degrees, forging the vital link between our students and key contacts in their chosen professions.

bond.edu.au/beyond-bond



Bond University Alumna and Pitch@Palace Finalist, Alisha Geary pitches her luxury activewear business, Faebella, to His Royal Highness, the Duke of York, Prince Andrew and an audience of high profile investors, entrepreneurs, influencers and business leaders.

Entrepreneurship and Innovation

The future will demand a totally new way of thinking: The old 9-to-5 employment model is already breaking down; technology has decentralised the workplace; small ideas have the potential to spark big businesses.

ENTREPRENEURSHIP AND INNOVATION

At Bond, we've engineered our programs to focus on developing adaptive, tech-savvy and future-focused graduates with a strong entrepreneurial streak.

You can major in Entrepreneurship and Innovation, create your own business enterprise, and bring entrepreneurial attitudes to whatever field you choose to study.

We'll introduce you to industry leaders, CEOs, venture capitalists and start-up innovators.

And you'll have the chance to develop, pitch and create your own concepts through internal and international initiatives like Bond Business Accelerator, Transformer, Gold Coast Demo Day, The World's Challenge Challenge and Pitch@Palace.

TRANSFORMER PROGRAM

This free co-curricular program brings students together from all Faculties and disciplines to collaborate on a project of their own choosing or contribute to one of the many other ongoing projects. Whether you're interested in social welfare, environmental issues, community health or developing new technologies, Transformer will show you how to apply entrepreneurial thinking to creative problem solving.

Working in teams of students who each bring different knowledge, perspectives and ideas, you'll have access to industry experts, mentors, academic coaches, workshops and a cutting edge 24/7 co-working space.



Students using VR technology in the Medicine Laboratories.

Learn by Doing

You can't learn everything you need to know about life from a textbook. That's why a large part of your time at Bond involves putting theory into practice and building life experience.

LEARN FROM INDUSTRY LEADERS

Our academics don't just teach. They consult to major companies, liaise with global governments, present at international conferences and work on ground-breaking research. You'll learn from their real-life case studies and the industry leaders they bring to campus as guest lecturers and mentors.

EXPERIENCE THE REAL WORLD

At Bond University, we break down the barriers between the classroom and the real world, giving our students access to practical experience, current workplace knowledge and industry contacts through internships, clinical placements, study tours, projects, global competitions and more.

- Our Business students learn from entrepreneurs and start-ups in Silicon Valley;
- Our Law students argue mooted cases in Hong Kong, Beijing, Canada and Queensland's own Supreme Court;
- Our Sports Science students work with elite athletes and professional teams from all over the world; and
- Our interns travel to amazing global cities such as Washington DC, Paris, London and New York.

GET READY FOR THE WORKFORCE

As a small university, our Career Development Centre works with every student to arrange relevant internships, employer placements, work experience and industry projects - not just towards the end of your degree, but from day one.

INTERNATIONAL EXCHANGE

Bond has international exchange agreements with more than 80 leading universities worldwide. Expand your global horizons and increase your employment prospects by studying, living and working in another country.

TOOLS OF THE TRADE

From our film and television studios to the Macquarie Trading Room, we have the very latest tools and technologies all here on one campus. And our small, personalised classes mean that everyone gets the chance to use them.

- More Bloomberg terminal access than any other university in Australia;
- One of the largest film and television production facilities in South-East Queensland;
- Paperless e-courtrooms;
- High altitude sport and exercise training rooms;
- Digital fabrication labs;
- Clinical skills rooms; and
- 3D printers, robots, simulators and more.

START YOUR CAREER NOW - WORK WHILE YOU STUDY

Your Australian Student Visa allows you to work up to 40 hours per fortnight. Bond's Career Development Centre may be able to help you find part-time work in your chosen field or industry while you're studying at university.



University Mascot, Bondy the Bull Shark with representatives of some of Bond's many sporting clubs.

A Unique Sense of Community and Belonging

Life as a student at Bond is a richly rewarding experience leading to genuine friendships and professional connections.

Our campus is home to a truly diverse mix of students from all corners of the globe who will challenge and inspire you by opening your eyes to a world of new perspectives. They're highly motivated to succeed, they're actively engaged in campus life and they'll ensure you never feel lost or alone.

ORIENTATION

Bond offers a dedicated orientation session for all new international students to help you find out more about studying and living in Australia and meet other new students from around the world before classes start. Our experienced staff and current students will be on hand to provide important information about studying at Bond, what to expect in your first semester, student associations to be involved in, as well as answer any of your questions. You can also join campus tours and a wide variety of social activities to get to know the campus and local area.

CLUBS AND SOCIETIES

Bond University is renowned for its friendly vibe and active social life, which centres on the huge variety of campus clubs, societies and student events.

They range from academic societies such as the Journalism Students' Association and Law Students' Association through to community welfare, sporting, professional, political and special interest groups.

Our international students can connect with friends from home at on-campus cultural organisations such as the Pacific Islanders Student Association, the Chinese Students' Association, the Canadian Law Students' Association and more; while religious clubs support our Christian, Jewish and Muslim students (a prayer room is located on campus).

EVENTS ON CAMPUS

There's always something happening on campus, starting with our welcome 'Jingerrri' barbeque held each semester by the Student Society for Indigenous Awareness. There is also Wednesday by the Water - a weekly free barbeque lunch on the banks of Lake Orr.

Other groups hold film nights, fundraisers and social get-togethers, and, in honour of our diverse global cohort, various clubs organise special celebrations to coincide with international and multicultural festivals, including the Super Bowl, Canada Day, Chinese New Year and our Global Food Festival.

BOND UNIVERSITY STUDENT ASSOCIATION (BUSA)

Student activities are organised under the umbrella of BUSA which also serves as the student representative body on academic and administrative issues.

All students pay a Student Activities Membership (SAM) fee each semester which covers the cost of their membership to all University clubs and societies, and access to all facilities and classes at the Bond University Sports Centre.

SPORT AND FITNESS

Bond offers a variety of opportunities to get involved in sports. See page 16 for more information about our sports centre, sports facilities, sports clubs and more.

FOOD

Between our small classes and active social life, you'll know almost everyone on campus by the end of your first semester. And you'll find plenty of places to catch up with your new friends for coffee, lunch or a night out without having to leave the campus:

- Lakeside Bar and Restaurant - A collective dining experience with food from every corner of the globe
- Bond Express - Our on-campus convenience store, also serving snacks and beverages
- Papyrus Café - For hot and cold drinks, light meals and snacks
- Don's Tavern - Our fully licensed bar and social hub of the University
- University Club - Gourmet a la carte fine dining overlooking Lake Orr
- Coffee Cart at Palm Court - For a quick caffeine or sugar fix
- Kinetic Café - At the Bond Institute of Health & Sport

Just outside the campus, you will find even more options for eating and socialising at Varsity Lakes Market Square, which has coffee shops, restaurants, a pub and a supermarket.

RELIGION

Australia is a multicultural society where you are free to practise your religion. Most of the world's religions are represented on the Gold Coast, and you will find many places of worship near the campus. As a Bond student, you will be supported in your faith through a number of religious clubs and societies, as well as a multifaith prayer room. All food outlets on campus serve halal and vegetarian food options.

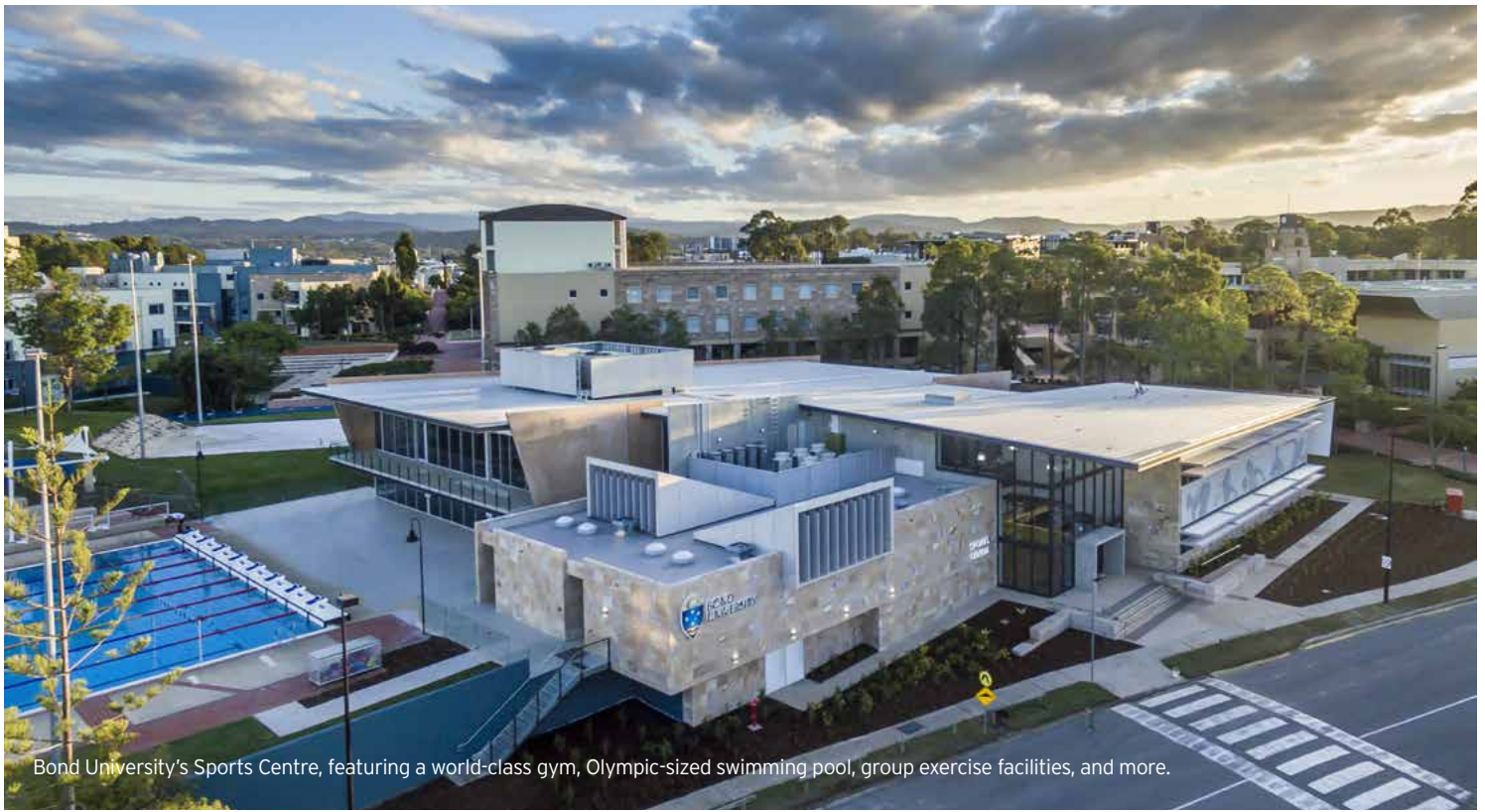
CHENG DONG LIN

Bachelor of Construction Management and
Quantity Surveying
China

"Bond is a unique private university which provides you with a very rewarding student experience. One of the highlights of my time at Bond has been the social life and being involved in multiple student clubs on campus."

I have been involved in both the Bond University Chinese Students' Association and Bond English Enthusiasts Society, which I have served both as President for a term."





Bond University's Sports Centre, featuring a world-class gym, Olympic-sized swimming pool, group exercise facilities, and more.

Sport is in our DNA

Sport and education are entwined at Bond University. We have a proud sporting tradition and we provide opportunities for students to participate at a social, competitive or professional level.

BOND UNIVERSITY SPORTS CENTRE

The University's multi-million dollar Sports Centre incorporates a state-of-the-art gymnasium, TRX Suspension Training Studio, boxing circuit training room, Olympic-sized swimming pool and a regular timetable of group exercise classes.

The campus also features extensive outdoor sporting facilities for cricket, tennis, rugby and Aussie Rules, as well as indoor basketball, netball, futsal, badminton, volleyball and squash courts.

SPORT CLUBS

Joining a sporting club is a great way to meet new friends and Bond has more than 20 to choose from.

They compete socially and seriously under the Bond Bull Sharks banner with the opportunity to compete in the Australian University Games, the Northern University Games and the Australian University Championships.

For information on Bond's Sport clubs and programs visit sport.bond.edu.au.

HIGH PERFORMANCE SPORTS

There are a number of key performance sports in which Bond offers world-class coaching and facilities. These sports include swimming, rugby union including women's Rugby 7's, Aussie Rules and netball. With each of these sports, we have established high level partnerships and strategies to ensure we compete at the highest level both domestically and internationally.

BOND ELITE SPORT PROGRAM

Bond University is a member of the Australian Sport Commission's Elite Athlete Friendly University (EAFU) Program, which provides flexible study loads and requirements for athletes at the very top of their sport. Athletes competing at a state, national or international level in their chosen sport are invited to apply to the Bond Elite Sport Program.

For details on Bond's Elite Sport Program please visit sport.bond.edu.au/programs/elite-sport-program

SPORTS RESEARCH

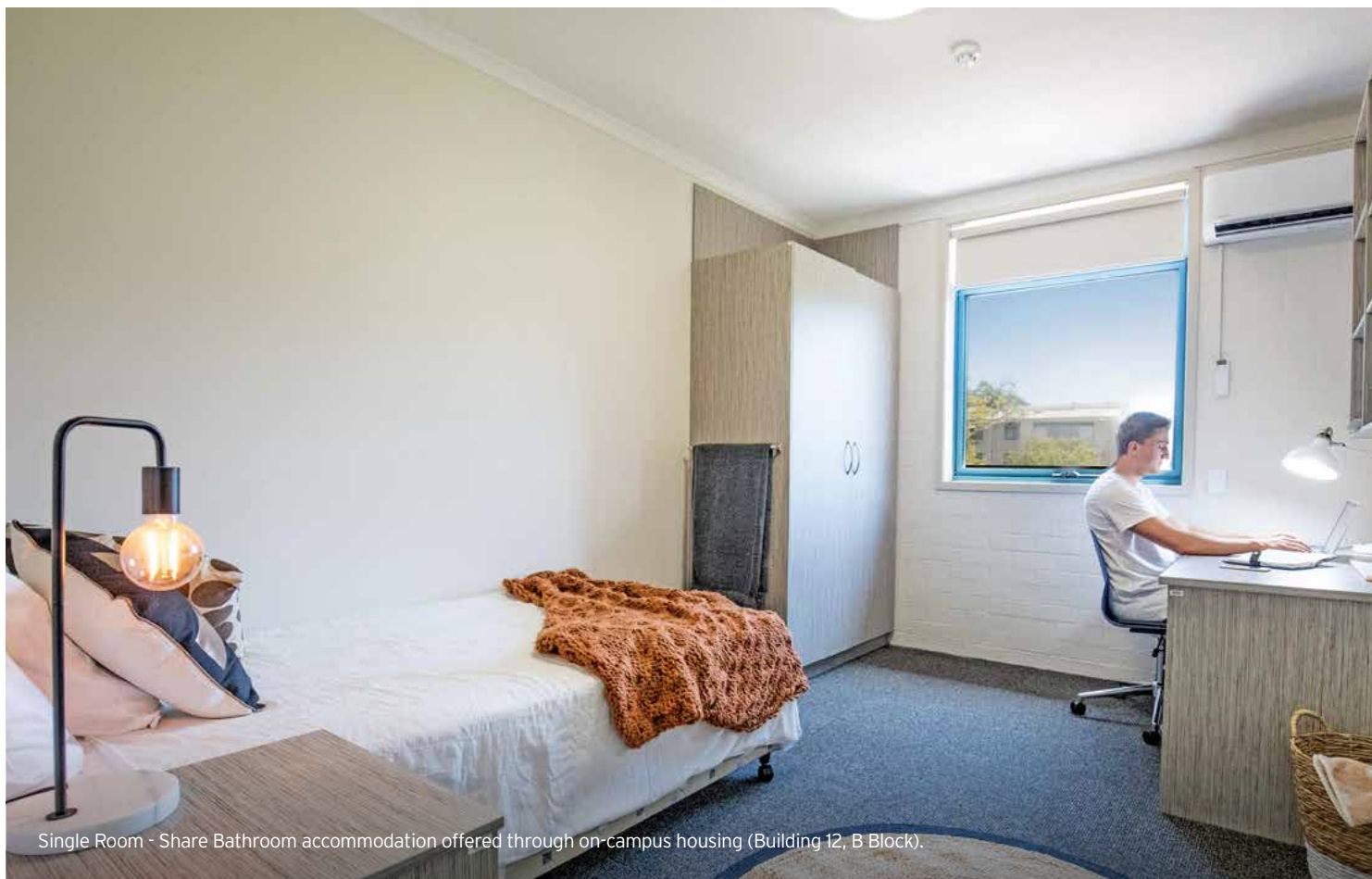
The Bond Institute of Health & Sport is a world-class teaching and training centre which regularly hosts international athletes and professional teams.

Specialist training and preparation facilities include the strength and conditioning gymnasium, lap pool and temperature contrast pools, the oxygen-reduced altitude training room and the sports science laboratories.

The Institute is also used extensively by students studying exercise and sports science, physiotherapy, occupational therapy, nutrition and dietetics.



Spectators watch Bond's rugby union team play from the Fabian Fay Clubhouse.



Single Room - Share Bathroom accommodation offered through on-campus housing (Building 12, B Block).

Accommodation

Bond is located in a landscaped residential neighbourhood with a wide range of on-campus and off-campus accommodation available for our students within easy walking distance of all University study and recreational facilities.

ON-CAMPUS

On-campus housing offers your choice of air-conditioned single or shared rooms. In addition to the one-on-one academic and personal support available from the live-in team of Senior Resident Fellows, Resident Student Fellows and Tutor Fellows, resident students enjoy a great social life as they mix with classmates at mealtimes and in study sessions, and there's always someone around to talk to in the shared common areas.

Please note that General English and English for Academic Purposes students are not permitted to reside in on-campus accommodation.

MEAL PLANS

For students living on campus, it is compulsory to have a dining plan. These flexible prepaid plans can be used to purchase meals on campus at Lakeside Bar and Restaurant, Papyrus Café, Don's Tavern, Coffee Cart, Bond Xpress and the University Club.

APPLYING FOR ON-CAMPUS ACCOMMODATION

Our on-campus rooms are in high demand, so we recommend you complete your application as soon as the accommodation booking period opens. To view rooms online and complete your application, visit bond.edu.au/accommodation

HOMESTAY

Homestay accommodation offers students a fully supported living experience with a local host family. Bond University's homestay program is professionally managed by the Australian Homestay Network - homestaynetwork.org

OFF-CAMPUS

There is a wide range of rental accommodation surrounding the University if you would like to live off campus. Options include houses or apartments on a single or shared basis with weekly rent varying, depending on size, location and the number of bedrooms. You will also need to budget for a security deposit (bond), food, electricity, telephone, internet and cleaning.

Nearby off-campus accommodation options:

h2oapartments.com.au
liveinbrooklyn.com.au
thechancellor.com.au
universityplace.net.au

SHARE ACCOMMODATION

Students regularly advertise for flatmates in a variety of units, townhouses and larger homes located in suburbs adjacent to the campus (Varsity Lakes, Robina) and further afield - see flatmates.com.au/bond

COUPLE AND FAMILY ACCOMMODATION

There is a variety of rental accommodation available across the Gold Coast, ranging from beachside apartments to suburban family homes near schools, business precincts and retail centres.

Popular websites:
realestate.com.au
domain.com.au

Living on the Gold Coast

GETTING AROUND THE GOLD COAST



By train - A rail service operates from Robina or Varsity Lakes station close to Bond University, to the Brisbane CBD and Brisbane Airports.



By bus - Regular bus services operate from in front of the University to the main shopping, residential and tourist areas on the Gold Coast.



Walking distance from campus - there are shops, a small supermarket, cafes, restaurants and facilities just outside the campus at Varsity Lakes.

GETTING TO BOND UNIVERSITY

From Gold Coast Airport - 30 minute drive

From Brisbane Airport - 1 hour drive



Airport transfers from either the Gold Coast or Brisbane can be booked via bond.starrezhousing.com/StarRezPortal

WEEKLY LIVING COSTS*

The Australian Government's Department of Home Affairs requires students to have access to a minimum of \$20,290 per year to fund their living expenses.

	On-campus accommodation	Off-campus accommodation	Homestay
Rent	\$166 - \$286	\$165 - \$440	\$255 - \$275
Food	Included in dining plan	\$80 - \$280	Included
Electricity, gas, water	Included	\$20 - \$50	Included
Transport	N/A (on campus)	\$15 - \$55	\$20 - \$40
Mobile phone	\$5 - \$10	\$5 - \$10	\$5 - \$10
Entertainment	\$80 - \$150	\$80 - \$150	\$80 - \$150
Total cost per week	\$251 - \$446	\$365 - \$985	\$360 - \$475
Total cost per semester	\$3,514 - \$6,244	\$5,110 - \$13,790	\$5,040 - \$6,650

Source: studyinaustralia.gov.au/english/live-in-australia/living-costs

OTHER COSTS

When considering the costs associated with your studies, keep in mind that Bond's accelerated schedule means you'll finish your degree sooner and be out in the workforce up to a year earlier than if you went to another university. This time saving also represents a substantial reduction in accommodation and living costs, plus a full year of extra earnings.

Other costs you will need to budget for include:

- Tuition fees
- Visa application fees
- Overseas Student Health Cover (OSHC)
- Student Activities Membership (SAM) Fee
- Flights
- Cost of living
- Other personal and study-related expenses

*Prices are approximate and can vary depending on budget and lifestyle.

ON CAMPUS



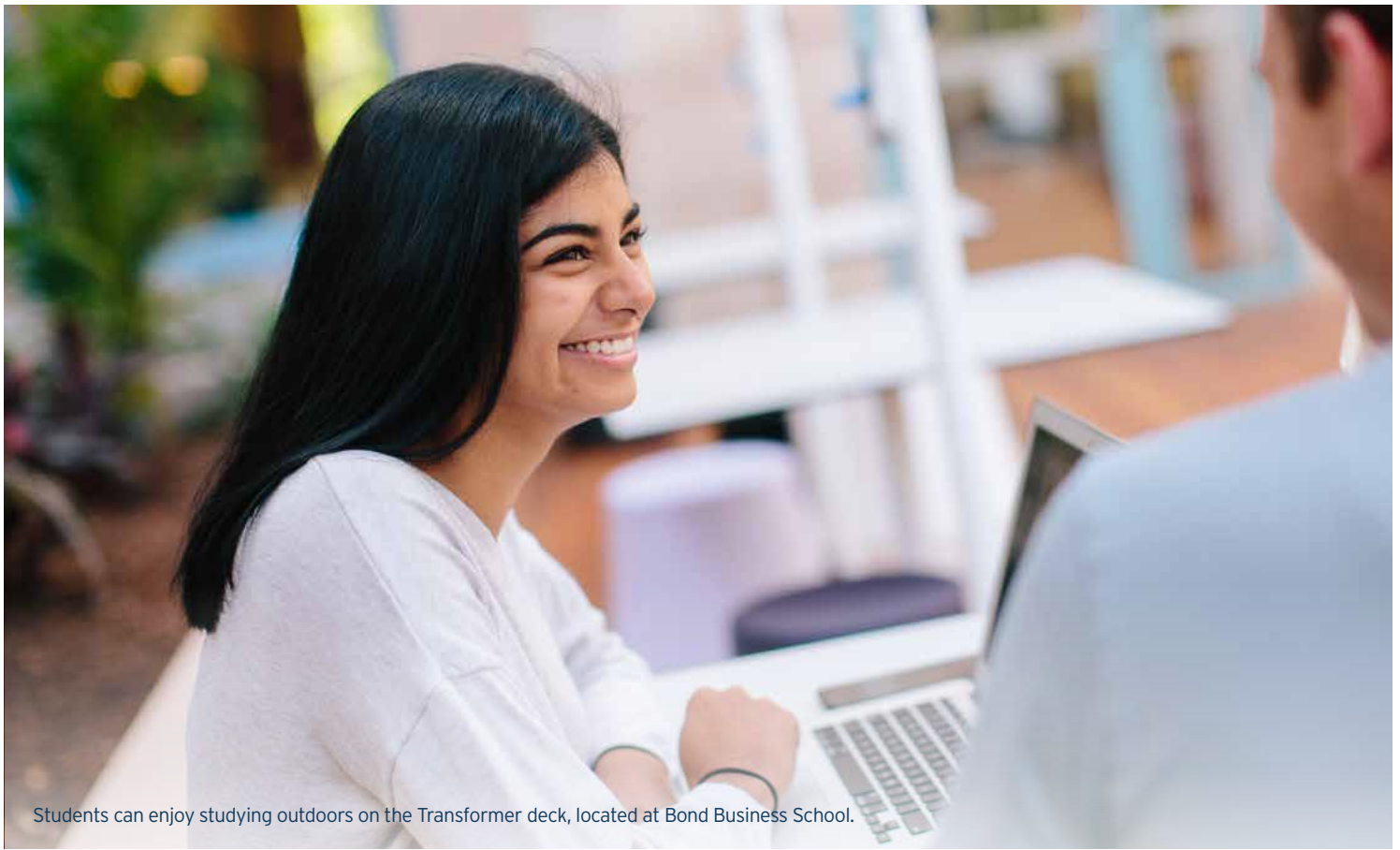
**FREE
WIFI**



**FREE
GYM**



**FREE
PARKING**



Students can enjoy studying outdoors on the Transformer deck, located at Bond Business School.

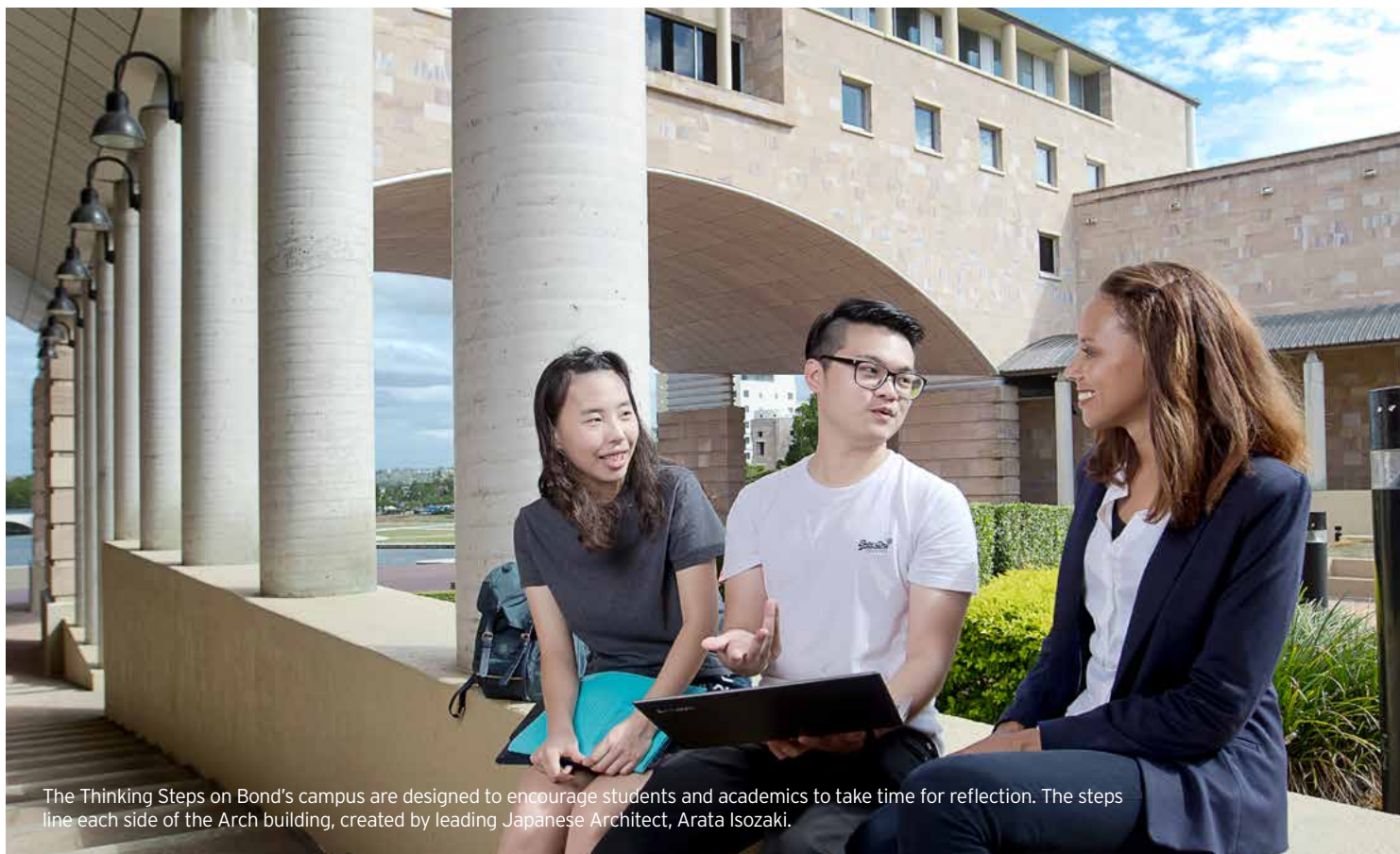
Investing in your Future

Choosing the right university will make all the difference between an ordinary and an extraordinary life.

This is an investment in your future - one of the biggest and most impactful you will ever make - and, as with any investment, it's important to understand the distinction between 'cost' and 'value'. Employers constantly tell us that a student's degree is just one element that they consider. The applicants who can really add value to their business are those who offer the total package - life experience, international exchange, industry experience, extracurricular participation, global perspective, leadership qualities and community engagement.

Bond can offer all this by investing 100 per cent of your tuition fees into providing a five-star educational experience, state-of-the-art facilities and a truly personalised student framework.

When considering the costs associated with your studies, keep in mind that Bond's accelerated schedule means you'll finish your degree sooner and be out in the workforce up to a year earlier than if you went to another university. This time saving also represents a substantial reduction in accommodation and living costs, plus a full year of extra earnings.



The Thinking Steps on Bond's campus are designed to encourage students and academics to take time for reflection. The steps line each side of the Arch building, created by leading Japanese Architect, Arata Isozaki.

Scholarships

One of the key ways Bond University identifies future leaders is through our scholarship program.

BOND UNIVERSITY SCHOLARSHIPS AND BURSARIES

Bond offers a number of part tuition scholarships and bursaries to international students for undergraduate, postgraduate and research degrees. Applicants will need to demonstrate outstanding academic ability, strong leadership skills and community engagement.

Available scholarships and bursaries include:

SCHOLARSHIP	STUDY LEVEL	VALUE
India Excellence Scholarship	Undergraduate, Postgraduate	Part-fee
Bond Business School Postgraduate Bursaries	Postgraduate	Part-fee
International Undergraduate Excellence Scholarship	Undergraduate	Part-fee
Transformer Scholarship	Undergraduate, Postgraduate	Part-fee

For full list of available scholarships and bursaries, selection criteria, conditions and application closing dates, visit bond.edu.au/scholarships.

STUDENT OPPORTUNITY FUND

The Student Opportunity Fund provides grants of up to AUD\$2,000 to help finance unique and outstanding 'beyond the classroom' educational experiences for our current students, including academic, leadership and other extracurricular activities.

For more information on eligibility and application closing dates, visit bond.edu.au/student-opportunity-fund

AUSTRALIAN GOVERNMENT SCHOLARSHIPS

The Australian government funds scholarships for next-generation leaders from around the world to undertake study and research in Australia. Some of the key scholarships include:

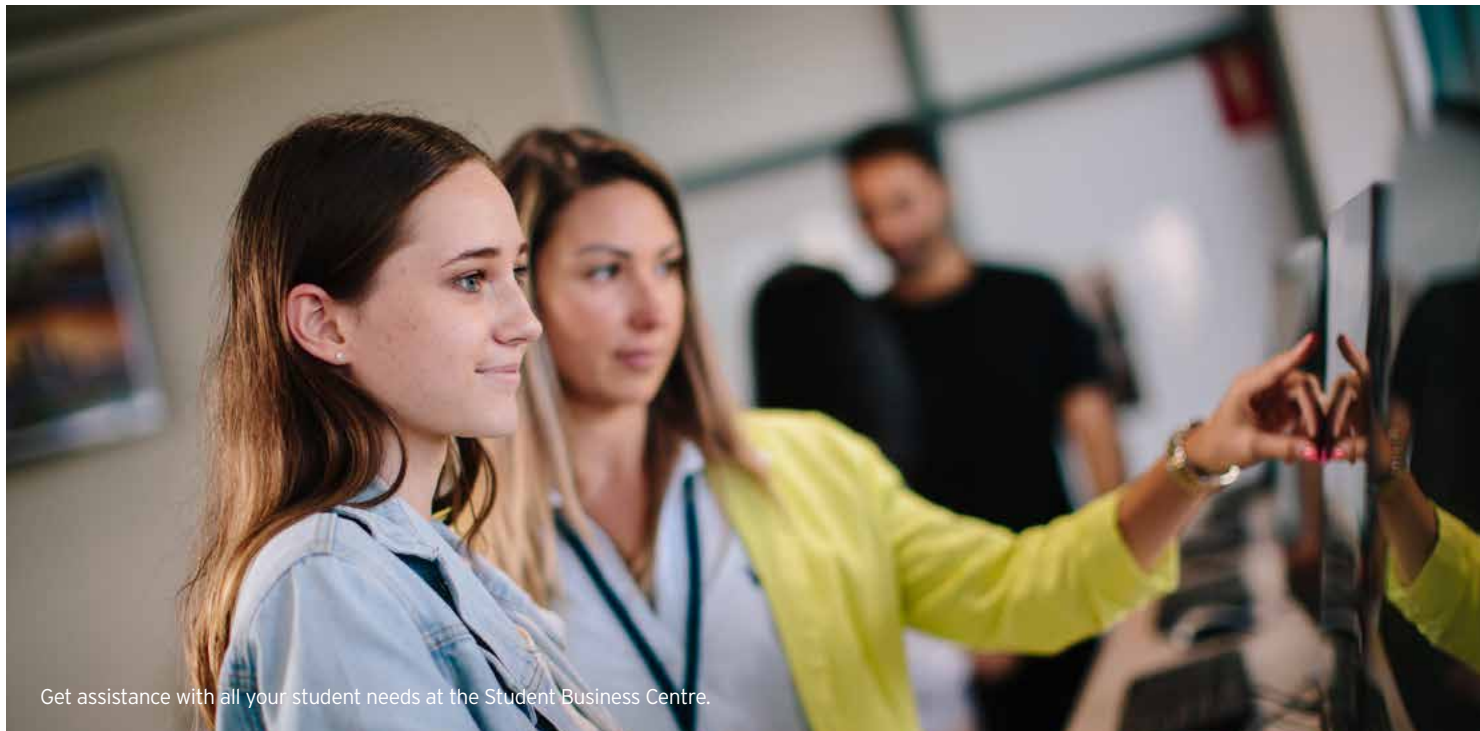
- Australia Awards Scholarships - provides opportunities for citizens of developing countries in Asia, the Pacific, the Middle East and Africa to study full-time in Australia at undergraduate or postgraduate level.
- Endeavour Awards and Fellowships - internationally competitive, merit-based scholarships that support citizens of the Asia-Pacific, the Middle East, Europe and the Americas to undertake study, research and professional development programs in Australia.

HELP FROM HOME

Many countries offer their citizens scholarships, grants or some form of student loans for overseas study. For the most up-to-date advice, go to your country's government website.

Postgraduate and research funding may also be available through your home university, your employer or professional organisations in your country or region.

For more information on Financial Aid for international students, visit bond.edu.au/financing-your-studies



Get assistance with all your student needs at the Student Business Centre.

Student Support

Our team of experienced specialists are available on campus at any time to help you with everything from subject enrolment, tutoring and study support through to personal security and counselling.

ACADEMIC SUPPORT

Our academics and Faculty support staff know their students by name. Their open-door policy makes it easy to ask for help at any time.

ACADEMIC AND ENGLISH LANGUAGE SUPPORT

The Student Learning Support team offers personalised help, with free one-on-one consultation sessions that students can book up to once per week for help with assignments, and workshops in academic writing, time management, oral presentations, exam preparation and much more. Please note that this service is provided to General English and English for Academic Purposes students already from their teachers.

IT / TECH SUPPORT

The IT Service Desk knows everything about our technology and computer systems, from Wi-Fi and mobile access through to audio-visual and conferencing equipment.

MENTORING

Our alumni and industry connections are ready, willing and available to provide personal guidance and valuable career advice.

CAREER PREPARATION

Connect with the Career Development Centre from day one to access free workshops and one-on-one careers guidance. Their qualified Employment Services Specialists will also facilitate your industry internships and placements.

24 / 7 SECURITY

Your safety is our number-one priority, and our Security team are available on campus 24 / 7. You can drop by their office or give them a call if you ever need assistance.

BOND UNIVERSITY STUDENT ASSOCIATION (BUSA)

BUSA gives students a voice on campus by providing advocacy and support. It is also a vital information hub, connecting you to social networks, clubs, associations and co-curricular activities. For more information, visit busa.com.au

HEALTH AND WELLBEING

Our on-campus Medical Clinic is staffed full-time by a doctor and a nurse. We also offer free confidential counselling from our qualified psychologist and specialised support for students with a disability.

CULTURAL DIVERSITY

Bond University provides a caring, inclusive and respectful environment with support, social networks and clubs for students of different races, religions and cultural backgrounds, including LGBTIQ and First Nations students.

RESPECT. NOW. ALWAYS

Bond University and the Bond University Student Association (BUSA) are jointly committed to a healthy culture of respect and responsibility that provides for a safe and supportive campus for everyone.



DEDICATED INTERNATIONAL STUDENT SUPPORT

Bond has a strong contingent of international students, coming from over 80 countries. Our specialist International Student Team can help you manage any issues relating to Student Visas, Overseas Student Health Cover (OSHC), English language tutoring and personal counselling.

A photograph of Professor Alan Patching, a bald man in a dark suit and light blue shirt, smiling and gesturing with his hands while holding a tablet. He is standing in a modern lecture hall with large windows and a curved wooden ceiling. Several students are seated at tables in the background, looking towards him. A whiteboard with diagrams and sticky notes is visible on the right side of the frame.

PROFESSOR ALAN PATCHING

Associate Dean, External Engagement
Faculty of Society & Design

Alan has been an adjunct and full-time Professor at Bond for eight years, teaching subjects related to his experience in property, construction, project management, and psychology and counselling.

"I endeavour to never lose sight of the Bond teaching philosophy. At Bond, it's a cultural value among teaching staff to equip our students to be the best they can be in the workplace for a career that's nothing short of spectacular.

When you teach in such a beautiful combination of built and natural environments, and working with bright young minds who will shape our businesses, our industries and our world in the future, it's a privilege."

Career Development Centre

Whether you want to change the world, change your community or change your life, the journey to your future starts on campus at the Career Development Centre (CDC).

From your first weeks at University, our team of qualified Employment Services Specialists can help you develop your career goals or guide you through the career change process. They offer a range of workshops, seminars and networking functions, and will work with you one-on-one to identify career opportunities, write applications and resumes, make connections with key employers and recruitment agencies, and prepare for interviews.

You'll find job listings in 24 countries worldwide on the online careers and employment portal, which can put you in contact with graduate recruitment representatives in your field. They also host Bond's annual Job and Internship Fair.

The CDC also serves as the vital link between students and our industry partners to manage internships and placements that offer practical experience and potential career contacts with leading Australian and international employers.

Ongoing career support is available to all Bond students even after they graduate, providing you with life-long advice and guidance, as well as access to the online careers portal.

For more information about the CDC please visit bond.edu.au/cdc.



CAREER DEVELOPMENT CENTRE

Find job listings in 24 countries worldwide on our online careers and employment portal.



INTERNSHIPS AND PLACEMENTS

The CDC is a vital link between students and industry partners.

Global Alumni Network

As a Bond graduate, you will become a member of a worldwide alumni network, providing you with contacts, support and friendship wherever you may go.

On campus, you'll benefit from the global perspectives and experience they bring to the classrooms, discussions and group assignments. You'll also form lifelong friendships and empowering relationships with people from all over the world.

These connections are maintained and developed long after you graduate through Bond's active Alumni Association.

With more than 25,000 graduates now living and working in over 130 countries, you'll find Bond Alumni Committees active in every corner of the globe; willing to offer help, friendship and professional connections.

Our Alumni also play an active role in life on campus:

- Offering our students exclusive work experience opportunities, internships and clinical placements;
- Sharing their wealth of life and career experience as regular guest speakers and lecturers;
- Partnering with individual students through our Alumni Mentor Program; and
- Contributing to the University's Ambition Fund.



UTHRA VENTKATESH

Master of Communication (Professional)
India

"I absolutely love the learning environments at Bond including the library, Balnaves Multimedia Learning Centre, the studio and computer labs. The lecturers have been very helpful, approachable and supportive throughout my degree. The industry connections and exposure to industry experts has definitely been a highlight of my experience at Bond."

What can I study?

Bond University provides options for all levels of tertiary study - from English language and academic preparation programs through to full bachelor, master and doctorate degrees.

UNDERGRADUATE PROGRAMS

Bachelor: 6 - 8 semesters (2 - 3 years)

Bachelor with Honours: Additional 2 - 3 semesters (1 year) of coursework, seminars and supervised research

ACADEMIC PATHWAYS

Bond University College (see page 28)

Foundation: 2 semesters (8 months)

Higher Education Diplomas: 2 semesters (8 months)

POSTGRADUATE COURSEWORK PROGRAMS

Master: 2 - 6 semesters (8 - 24 months)

Master (Professional): 4 semesters plus 20 week internship (92 weeks)

Graduate Certificate: 1 semester (4 months)

Graduate Diploma: 2 semesters (8 months)

ENGLISH LANGUAGE COURSES

Bond University College (see page 29)

English for Academic Purposes
General English

HIGHER DEGREES BY RESEARCH (HDR)

Doctor of Philosophy (PhD): Maximum 12 semesters (4 years)

Master of Philosophy (MPhil): Maximum 6 semesters (2 years)



STUDY ABROAD PROGRAM

Bond's Study Abroad Program gives you the opportunity to come to Bond for one or two semesters and study a wide range of subjects from our undergraduate and postgraduate degrees.

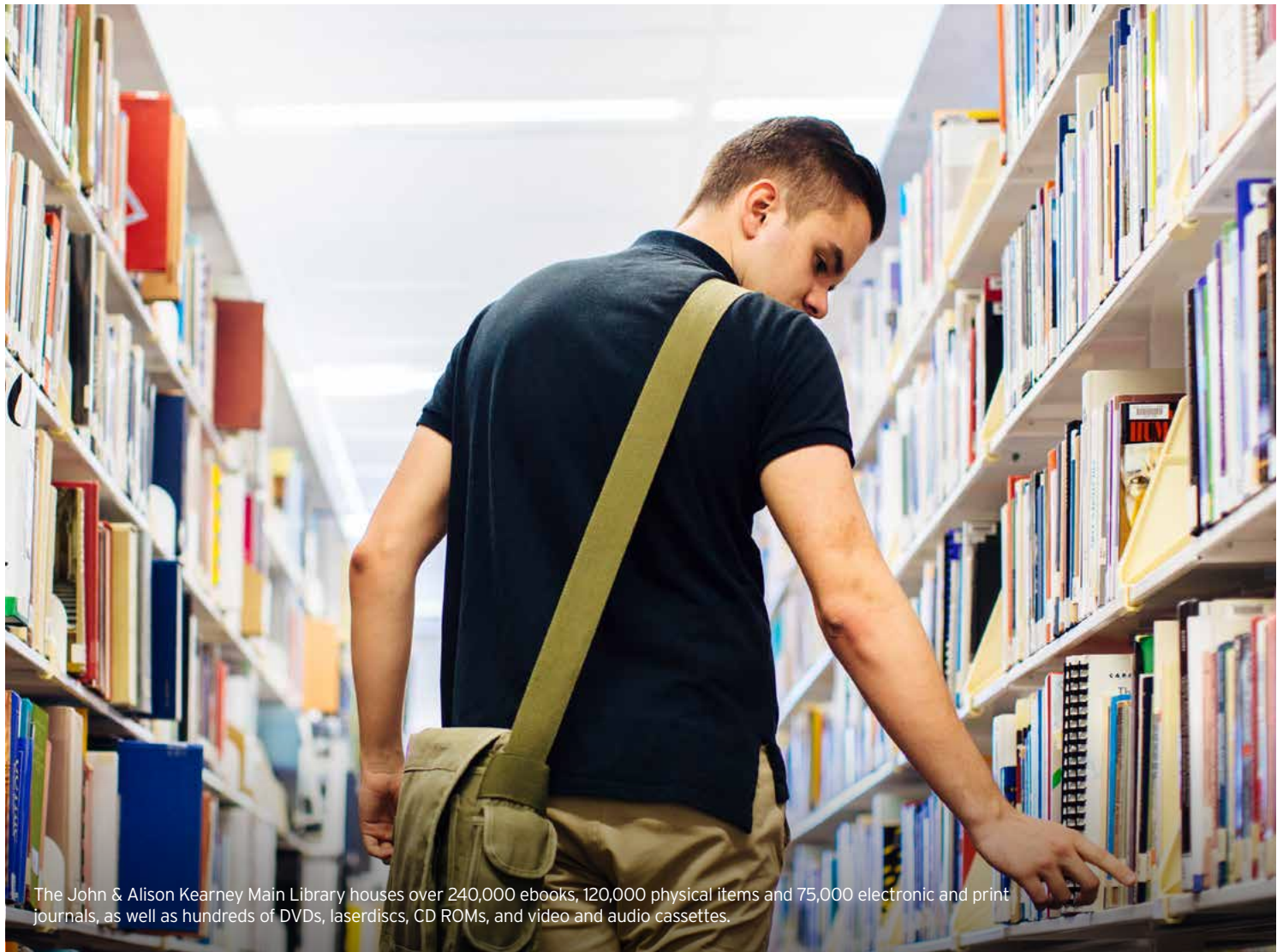
Our three semester structure gives you the flexibility to start in January, May or September, making it easy to fit a Study Abroad semester into your existing study schedule or in your summer break.

And, depending on the subjects you choose at Bond, your home university may credit your Study Abroad subjects towards your degree so you'll still finish in the same timeframe.

Visit bond.edu.au/study-abroad to see our Study Abroad and Exchange Guide for more information.



Explore the stunning Gold Coast hinterland.



The John & Alison Kearney Main Library houses over 240,000 ebooks, 120,000 physical items and 75,000 electronic and print journals, as well as hundreds of DVDs, laserdiscs, CD ROMs, and video and audio cassettes.

Your options explained

UNDERGRADUATE PROGRAMS

Bachelor Degree

Admission to a bachelor degree is usually based on high school academic results and English language criteria. See page 69 for country-specific entry requirements.

Pathway Options

If you don't meet the academic entry requirements for your chosen bachelor degree, you could study the Bond University College Foundation Program or a Higher Education Diploma at Bond University College as a pathway first. See page 28 for further details.

POSTGRADUATE PROGRAMS

Admission to postgraduate coursework degrees generally requires a bachelor degree from a recognised university, however in some cases, extensive career experience in a relevant industry may meet the entry criteria.

HIGHER DEGREES BY RESEARCH (HDR)

Admission to HDR programs generally requires a bachelor degree with Class I or Class II Honours, a postgraduate qualification incorporating a significant research component, or a record of significant research experience deemed to be of a comparable standard to a bachelor degree with Class I or Class II Honours. See page 65 for further details.

ENGLISH LANGUAGE ENTRY REQUIREMENTS

Bond University has specific English language entry requirements for each of our programs. See page 66 for further details.

CREDIT TRANSFER

You may be able to transfer subject credits into your chosen Bond degree for previous tertiary studies in a relevant or related field. You can apply for a credit transfer using the Bond University application form by including certified copies of transcripts from your previous studies, detailed course outlines and subject descriptions. For more information, visit bond.edu.au/credit.

GRADUATE SOONER WITH OUR THREE SEMESTER SYSTEM

Bond's teaching calendar is based on three semesters per year, rather than the usual two. Our programs start earlier in the year, with shorter breaks between each semester so you can graduate much sooner. You could also complete a combined degree or an undergraduate and postgraduate degree in less time than it would take to complete a single degree at another university.

Our semester start dates are in January, May and September to give you more flexibility about when you start your degree.

STUDY SCHEDULE

International students must commit to a full-time study load as a requirement of their Australian Student Visa. A full-time study load is the equivalent of four subjects per semester or 40 credit points.

Pathways to Bond University

If you don't meet the entry requirements for your chosen degree, Bond University offers a range of pathway programs to help you achieve the academic and English language requirements you need. Our pathway programs are delivered on campus by Bond University College where you will benefit from extra hours of face-to-face teaching in a small class, mentoring environment.

Bond University College is located in the heart of the Bond University campus. You will have access to all of the University resources and facilities and will be welcomed as a fully fledged member of the University community from the day you arrive.

Academic Pathways

BOND UNIVERSITY COLLEGE FOUNDATION PROGRAM

CRICOS Course Code 063151G

Duration: 8 months (2 semesters)

Starting: January, May, September

The Bond University College Foundation Program has been specifically designed for international students as a pathway into first year undergraduate study. You will learn the core skills necessary for academic success, delivered by experienced and supportive teachers in small, personalised classes. Successfully passing the Foundation Program will allow entry into most undergraduate programs, however, entry into the Bachelor of Laws requires a GPA of 70% or higher.

Subjects for the Foundation Program include:

- Academic Skills
- Introduction to Entrepreneurship and Innovation
- Foundation Mathematics 1
- Introduction to Multimedia
- World History and Politics
- Foundation English 1
- Foundation English 2
- Plus one of either Society and Culture, Introduction to Economics, Foundation Mathematics 2 or Elementary Maths

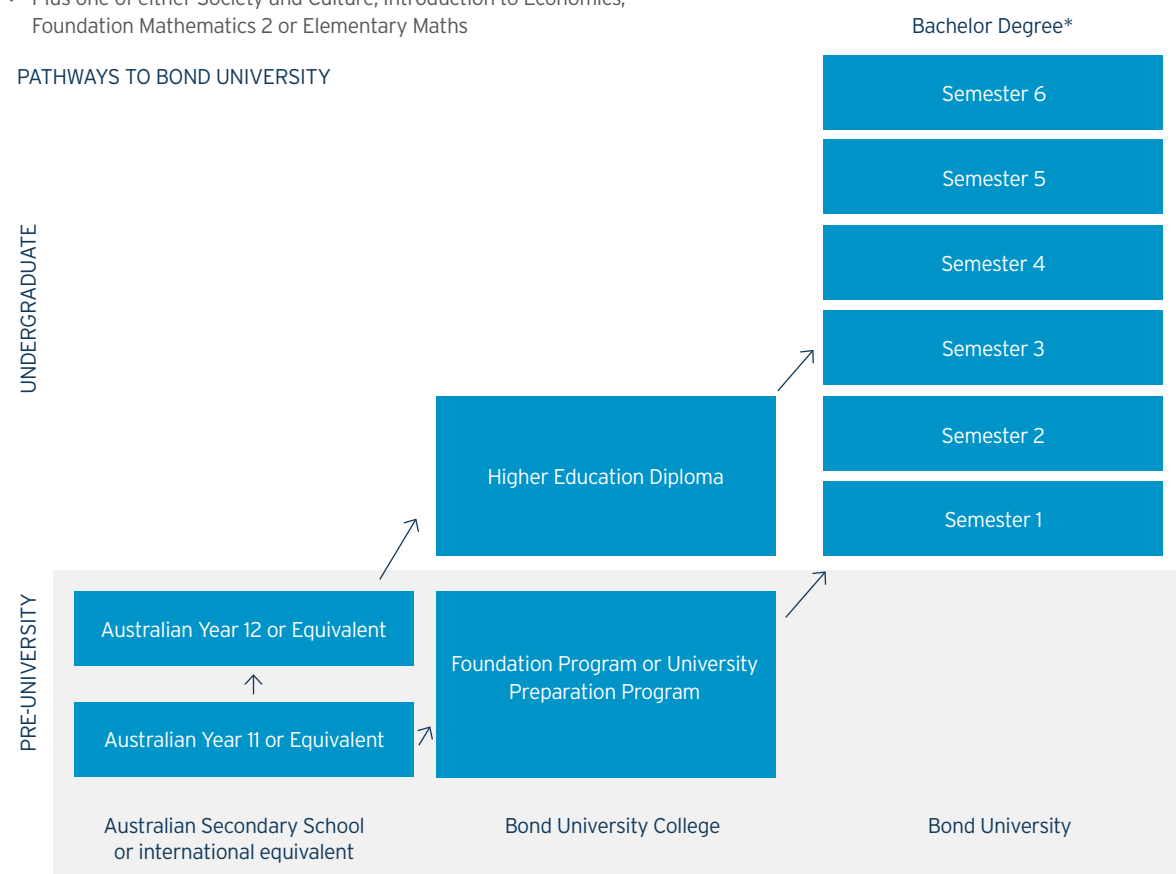
HIGHER EDUCATION DIPLOMAS

Duration: 8 months (2 semesters)

Starting: January, May, September

Our diploma level studies provide a pathway for students who do not meet the academic or English language requirements for direct entry into their chosen bachelor degree, or who would prefer to start their university journey in a more supported environment. Successful completion of your diploma qualifies you for entry into a Bond bachelor degree, with varying credit.

- Diploma of Business (CRICOS 078663E)
- Diploma of Communication (CRICOS 078664D)
- Diploma of Criminology (CRICOS 078658B)
- Diploma of Health Sciences (CRICOS 093260K)
- Diploma of International Hotel and Tourism Management (CRICOS 088313M)
- Diploma of Legal Studies (CRICOS 080298C)
- Diploma of Sport Management (CRICOS 078901G)



*The average Bond University undergraduate degree is two years but may be longer in some areas of study.



Bond University College was ranked #1 by students for value for money for their English course in the I-Graduate Survey.

English Pathways

GENERAL ENGLISH (GE)
CRICOS Course Code 065668G

Duration: 10 weeks per level
Starting: Every 10 weeks (See website for preferred starting dates).

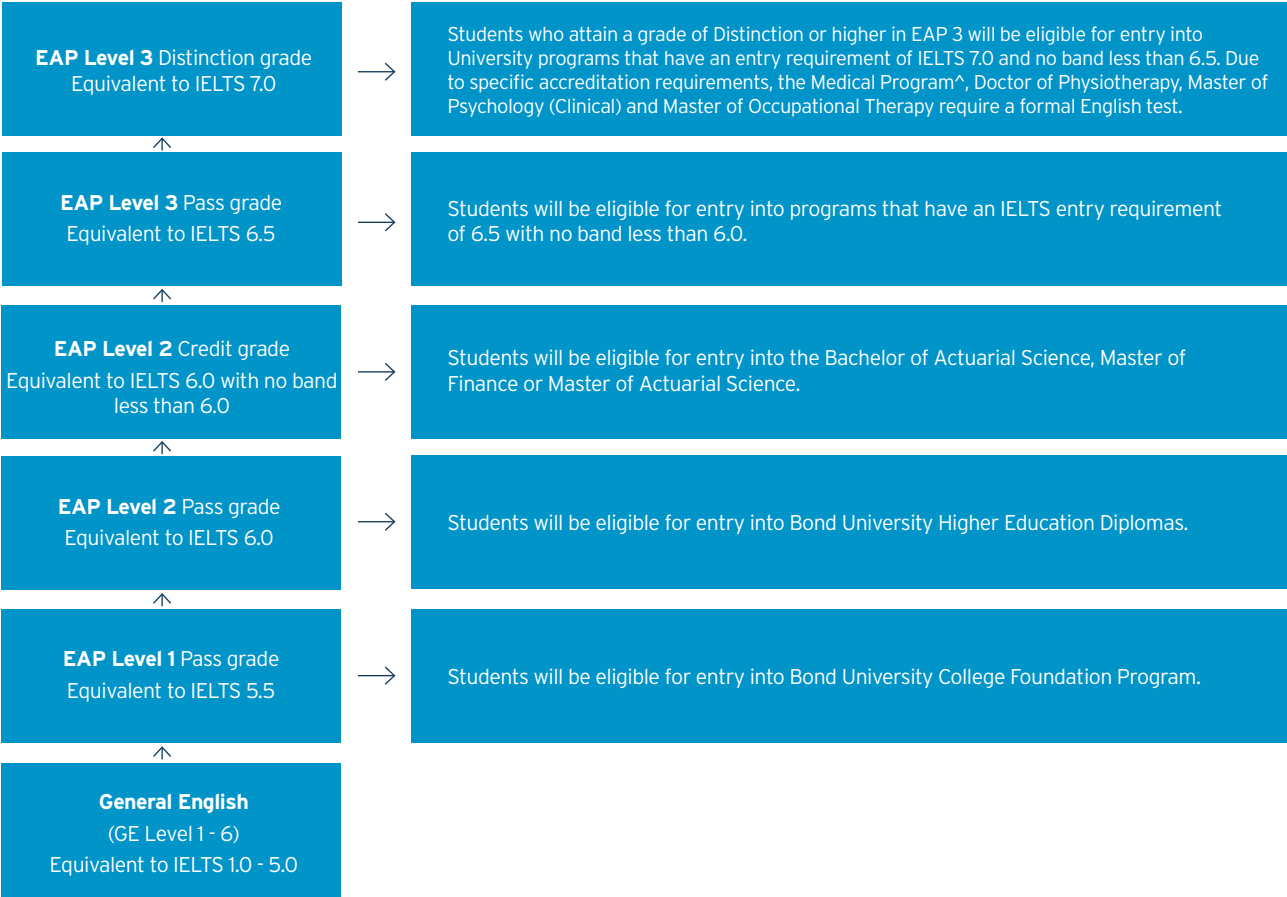
Improve your skills in speaking, listening, reading and writing English for everyday use. Classes are available at six levels graded from Beginner to Advanced.

ENGLISH FOR ACADEMIC PURPOSES (EAP)
CRICOS Course Code 066082C

Duration: 14 weeks (1 semester) per level
Starting: January, May, September

Improve your academic English and study skills to meet the criteria for direct entry to selected programs. EAP is a full-time program incorporating three levels, with each level taking one semester (14 weeks) to complete. The College's three-semester-per-year schedule allows you to complete all three levels in one year. EAP can be combined with General English for students whose levels are below IELTS 5.0 before arrival and intend to continue their studies in an undergraduate or postgraduate degree.

ENGLISH PATHWAYS TO FURTHER STUDY



Undergraduate Study Options

There's a lot to consider when deciding what you will study. Knowing where your degree will take you after you graduate is very important. Use this index to explore your study options based on your career interests.



BUSINESS AND COMMERCE

For careers relating to accounting, actuarial science, big data, digital business, economics, entrepreneurship, finance, hotel and tourism management, international business, management, sport management and marketing.

Diploma of Business	36
Diploma of International Hotel and Tourism Management	37
Diploma of Sport Management	37
Bachelor of Actuarial Science	36
Bachelor of Business	36
Bachelor of Business (3 Year Program)	36
Bachelor of Commerce	36
Bachelor of Commerce (3 Year Program)	36
Bachelor of International Hotel and Tourism Management	37
Bachelor of Sport Management	37



COMMUNICATION AND CREATIVE MEDIA

For careers relating to advertising, film and television, computer game development, communication and media, journalism, marketing and public relations.

Diploma of Communication	44
Bachelor of Arts	44
Bachelor of Communication	44
Bachelor of Communication (Business)	44
Bachelor of Creative Arts	45
Bachelor of Film and Television	45
Bachelor of Film and Television (3 Year Program)	45
Bachelor of Interactive Media and Design	45
Bachelor of Journalism	46



HEALTH SCIENCES AND MEDICINE

For careers relating to exercise and sports science, health sciences, biomedical science and medicine.

Diploma of Health Sciences	56
Bachelor of Biomedical Science	56
Bachelor of Exercise and Sports Science	56
Bachelor of Health Sciences (Honours available)	56
Medical Program^	56



LAW, CRIMINOLOGY AND CRIMINAL JUSTICE

For careers relating to law, dispute resolution, business law, criminology, corporate and commercial law, and forensics.

Diploma of Criminology	47
Diploma of Legal Studies	62
Bachelor of Business Law	62
Bachelor of Jurisprudence	62
Bachelor of Laws	62
Bachelor of Social Science	47

[^]Please note that direct entry into the Bond Medical Program is currently only open to Australian citizens, Australian permanent residents, holders of an Australian Humanitarian visa and New Zealand citizens (but not New Zealand permanent residents).

There are a number of pathways available to international students to join the Medical Program, including successful completion of the Bachelor of Biomedical Science (in the Pre-Health Professional major), the Master of Occupational Therapy, the Doctor of Physiotherapy or the Master of Nutrition and Dietetic Practice. Upon completion of one of these degrees, and meeting the minimum required GPA, students will be eligible to be considered for selection to enter Year 2 of the Medical Program.



ARCHITECTURE AND BUILT ENVIRONMENT

For careers relating to architecture, real estate, property and sustainable development, urban design and planning, environmental management, environmental science, construction management and quantity surveying.

Bachelor of Architectural Studies	44
Bachelor of Construction Management and Quantity Surveying	45
Bachelor of Property	47
Bachelor of Sustainable Environments and Planning	47



HUMANITIES, LANGUAGES AND INTERNATIONAL STUDIES

For careers relating to applied linguistics, Australian studies, language and culture, international relations, foreign correspondence, politics, international trade law and philosophy.

Bachelor of Arts	44
Bachelor of Global Studies (Sustainability)	45
Bachelor of International Relations	46
Bachelor of International Relations (3 Year Program)	46



PSYCHOLOGY, COUNSELLING AND BEHAVIOUR MANAGEMENT

For careers relating to criminology, counselling, behaviour management and psychology.

Diploma of Criminology	47
Bachelor of Psychological Science (Honours available)	47
Bachelor of Social Science	47



COMBINED DEGREE OPTIONS

Bond University offers a range of combined degrees. Combined degrees in other combinations are available, please contact the respective program coordinator.

Bachelor of Actuarial Science / Bachelor of Laws	
Bachelor of Arts / Bachelor of Laws	
Bachelor of Biomedical Science / Bachelor of Laws	
Bachelor of Business / Bachelor of Commerce	
Bachelor of Business / Bachelor of Laws	
Bachelor of Business / Bachelor of Social Science	
Bachelor of Commerce / Bachelor of Laws	
Bachelor of Communication / Bachelor of Laws	
Bachelor of Communication (Business) / Bachelor of Laws	
Bachelor of International Relations / Bachelor of Business	
Bachelor of International Relations / Bachelor of Laws	
Bachelor of Journalism / Bachelor of Laws	
Bachelor of Psychological Science / Bachelor of Laws	

Postgraduate Study Options

There's a lot to consider when deciding what you will study. Knowing where your degree will take you after you graduate is very important. Use this index to explore your study options based on your career interests.



BUSINESS AND COMMERCE

For career progression and professional development in the fields of accounting, actuarial science, business, big data, entrepreneurship, finance, management, sport management and research.

BBT Global Leadership MBA	40
Graduate Certificate of Business	39
Graduate Certificate of Business Administration	39
Graduate Certificate in Sport Management	41
Graduate Diploma in Sport Management	41
Master of Accounting	38
Master of Accounting (Professional)	38
Master of Actuarial Science	38
Master of Actuarial Science (Professional)	38
Master of Actuarial Science (Specialisation)	39
Master of Actuarial Practice	38
Master of Business	39
Master of Business (Professional)	39
Master of Business Administration	40
Master of Business Administration (Professional)	40
Master of Business Administration (Specialisation)	40
Master of Finance	40
Master of Finance (Professional)	41
Master of Financial Management	41
Master of Financial Management (Professional)	41
Master of Sport Management	41
Master of Sport Management (Professional)	41
Master of Philosophy	65
Doctor of Philosophy	65



COMMUNICATION AND CREATIVE MEDIA

For career progression and professional development in the fields of advertising, film and television, computer game development, communication and media, journalism, marketing and public relations.

Master of Communication	50
Master of Communication (Professional)	50
Master of Philosophy	65
Doctor of Philosophy	65





Program also available online.



LAW, CRIMINOLOGY AND CRIMINAL JUSTICE

For career progression and professional development in the fields of business law, criminology, corporate and commercial law, dispute resolution, forensics, international trade law, law and philosophy.

Graduate Certificate in Criminology	51
Graduate Diploma In Legal Practice 	63
Juris Doctor	64
Master of Criminology	51
Master of Criminology (Professional)	51
Master of Laws 	64
Master of Legal Administration	64
Master of Laws (By Research)	64
Doctor of Legal Science (Research)	64
Doctor of Philosophy	65



HEALTH SCIENCES AND MEDICINE

For career progression and professional development in the fields of health, medicine, biomedical sciences, and physiotherapy.

Medical Program^	56
Graduate Certificate in Nutrition	58
Graduate Diploma in Nutrition	58
Master of Nutrition and Dietetic Practice (extended Masters)	58
Master of Occupational Therapy (extended Masters)	58
Doctor of Physiotherapy (extended Masters)	59
Master of Science by Research (Health Sciences)	58
Doctor of Philosophy	65

^Please note that direct entry into the Bond Medical Program is currently only open to Australian citizens, Australian permanent residents, holders of an Australian Humanitarian visa and New Zealand citizens (but not New Zealand permanent residents).

There are a number of pathways available to international students to join the Medical Program, including successful completion of the Bachelor of Biomedical Science (in the Pre-Health Professional major), the Master of Occupational Therapy, the Doctor of Physiotherapy or the Master of Nutrition and Dietetic Practice. Upon completion of one of these degrees, and meeting the minimum required GPA, students will be eligible to be considered for selection to enter Year 2 of the Medical Program.



ARCHITECTURE AND BUILT ENVIRONMENT

For career progression and professional development in the fields of project management, construction practice, property valuation, environmental management and urban design.

Graduate Certificate in Construction Practice	50
Graduate Certificate of Sustainable Environments and Planning	52
Graduate Certificate of Valuation and Property Development	53
Graduate Diploma in Construction Practice	50
Graduate Diploma of Sustainable Environments and Planning	52
Graduate Diploma of Valuation and Property Development	53
Master of Architecture	49
Master of Building Surveying	49
Master of Construction Practice	50
Master of Construction Practice (Professional)	50
Master of Project Management	51
Master of Project Management (Professional)	52
Master of Sustainable Environments and Planning	53
Master of Sustainable Environments and Planning (Professional)	53
Master of Valuation and Property Development	53
Master of Valuation and Property Development (Professional)	53
Master of Philosophy	65
Doctor of Philosophy	65



PSYCHOLOGY, COUNSELLING AND SOCIAL SCIENCES



For career progression and professional development in psychology and criminology.

Graduate Certificate in Criminology	51
Graduate Diploma of Psychological Science	52
Master of Criminology	51
Master of Criminology (Professional)	51
Master of Psychology (Clinical)	52
Master of Philosophy	65
Doctor of Philosophy	65



HUMANITIES, LANGUAGES AND INTERNATIONAL STUDIES

For career progression and professional development in the fields of applied linguistics, Australian studies, language and culture, international relations, foreign correspondence, politics, international trade law and philosophy.

Graduate Certificate in TESOL 	49
Master of Arts (Coursework)	49
Master of Arts (by Research)	49
Master of Arts (TESOL) 	49
Master of International Relations	51
Master of International Relations (Professional)	51
Master of Philosophy	65
Doctor of Philosophy	65



HIGHER DEGREES BY RESEARCH

For career progression in a range of research related disciplines.

Master of Laws (By Research)	64
Doctor of Legal Science (Research)	64
Masters of Arts (By Research)	49
Master of Science by Research (Health Sciences)	58
Master of Philosophy	65
Doctor of Philosophy	65



COMBINED DEGREE OPTIONS

Bond University offers a range of combined degrees. Combined degrees in other combinations are available, please contact the respective program coordinator.

Master of Architecture / Master of Project Management
Master of Business Administration / Master of Accounting
Master of Business Administration / Master of Finance
Master of Business Administration / Master of Project Management
Master of Communication / Master of Project Management
Master of Construction Practice / Master of Project Management
Master of Criminology / Master of Project Management
Master of International Relations / Master of Project Management
Master of Sport Management / Master of Project Management
Master of Sustainable Environments and Planning / Master of Project Management
Master of Valuation and Property Development / Master of Project Management

Bond Business School



GLOBAL RANKINGS FOR BOND

Bond Business School has accreditations from EQUIS and AACSB. This places Bond in the top 2% (EQUIS) and 5% (AACSB) of business programs in the world.



FIRST FOR STUDENTS

Bond's MBA was rated #1 for student satisfaction according to Boss Rankings published by the Financial Review.



CLASSROOM MEETS BOARDROOM

Bond breaks down barriers between the classroom and the boardroom by collaborating with local and international organisations.



GRADUATE OUTCOMES

The number one job title held by Bond Business School Alumni is Director, closely followed by Managing Director, Manager, Owner and CEO*.

*Bond University Alumni database, 2017.



CENTRE FOR ACTUARIAL AND FINANCIAL BIG DATA ANALYSIS

Working in the global arena, this world-recognised centre is a major drawcard for higher degree, academic and commercial research, giving our students access to internationally renowned scholars, authors and experts in the burgeoning field of big data.



TRANSFORMER SPACE

This free co-curricular program brings students together from all Faculties and disciplines to collaborate on a project of their own or contribute to one of the many other ongoing projects taking it from initial idea to execution. Whether you're interested in social welfare, environmental issues, community health or developing new technologies, Transformer will show you how to apply entrepreneurial thinking to creative problem solving. Working in teams of students who each bring different knowledge, perspectives and ideas, you'll have access to industry experts, mentors, academic coaches, workshops and a cutting edge 24 / 7 co-working space.



MACQUARIE TRADING ROOMS

In our two industry-standard trading rooms, you'll have 24 / 7 access to live financial market data via 40 Bloomberg terminals. You'll be executing deals, managing portfolios and trading securities in real time based on current market conditions.



COMMERCIALISATION CENTRE

Home of the Bond Business Accelerator, Pop Up Entrepreneur Series, Gold Coast Demo Day and the Silicon Valley Study Tours, this dynamic and energetic space is designed to encourage collaboration, networking and inspiration.

INDUSTRY LINKS

The Bond Business School has established relationships with many local and international organisations, including:

- Accor
- ANZ
- ASX
- Austrade
- Bartercard
- Deloitte
- Disney
- EY
- Goldman Sachs
- Hilton
- InterContinental
- JBWere
- KPMG
- Macquarie Group
- Marriott
- Mercer
- PwC
- Quantum
- RACQ
- Suncorp Group
- Virgin
- Wyndham

Undergraduate Degrees

Bachelor of Actuarial Science

Duration	Subjects	Starting	IELTS	CRICOS	Fee*
6 semesters (2 years)	24	Jan May Sep	6.0 (6.0)	083205M	\$114,480 (\$19,080 per semester)

PROGRAM DESCRIPTION

- Study economics, statistics, finance and data analytics for the management of risk and business decision making.
- Make use of our 40 Bloomberg terminals and get hands-on using live data.
- Bond is the only Australian university to provide the opportunity to combine the Actuarial degree with Big Data training.
- Honours is available after successful completion of this program with a GPA of 2.0 / 4.0 or higher.
- Professional recognition by the Actuaries Institute.
- This program meets Part 1 accreditation with the Actuaries Institute.
- English language support classes are provided by Bond Business School.

RECOMMENDED STUDY PATHWAY

- Bachelor of Actuarial Science > Master of Finance (2 years, 8 months)

MAJORS

- Big Data
- Finance

COMBINED PROGRAMS

- Bachelor of Actuarial Science / Bachelor of Laws (CRICOS 093910C)

Diploma of Business

Duration	Subjects	Starting	IELTS	CRICOS	Fee*
2 semesters (8 months)	8	Jan May Sep	6.0 (5.5)	078663E	\$29,440 (\$14,720 per semester)

- Learn skills in managing teams, leadership, communication, conflict resolution, problem solving, decision making, information management, network technologies, and understanding ethics, morals and cultural beliefs.
- This program can be used as a pathway for entry into several Bond programs, with successful completion guaranteeing entry into the Bachelor of Business, Bachelor of Commerce or Bachelor of Laws (LA-40005) with 8 subjects of credit.

Bachelor of Business

Duration	Subjects	Starting	IELTS	CRICOS	Fee*
6 semesters (2 years)	24	Jan May Sep	6.5 (6.0)	063055G	\$114,480 (\$19,080 per semester)

Studying your Bachelor of Business will provide you with a comprehensive, multidisciplinary foundation to work as a business professional in varied business environments. You will apply what you have learned and develop your entrepreneurial, leadership and teamwork skills by designing and running an actual business.

PROGRAM DESCRIPTION

- A broad range degree that prepares you for a variety of career paths in business.
- Gain access to the Bond Business Commercialisation Centre.
- Every student will study Business Model Generation and Business Model Execution, teaching you how to start up and close down a business.

MAJORS

As part of the program, you will complete one of the business majors below. Completing a second major or minor from the below list is also encouraged to diversify your skills and enhance your job prospects.

- Entrepreneurship and Innovation
- International Business
- Management
- Marketing
- Marketing Communication
- Tourism Management

PROFESSIONAL OUTCOMES

- The Bachelor of Business provides a comprehensive, multidisciplinary foundation into the fundamentals of working or running a business anywhere in the world.
- Work in a range of fields upon graduation, including advertising, brand management, communications, consulting, human resource management, market research, tourism, hospitality or general management.

COMBINED DEGREES

- Bachelor of Business / Bachelor of Commerce (CRICOS 088305M)
- Bachelor of Business / Bachelor of Laws (CRICOS 093909G)
- Bachelor of Business / Bachelor of Social Science (CRICOS 088309G)
- Bachelor of International Relations / Bachelor of Business (CRICOS 088310C)



You can also complete an internship, or participate in a study abroad program or overseas study tour to further augment this highly practical program.

Bachelor of Business (3 Year Program)

Duration	Subjects	Starting	IELTS	CRICOS	Fee*
6 semesters (3 years)	24	Jan Sep	6.5 (6.0)	077409E	\$114,480 (\$19,080 per semester)

- This program is designed for international students who wish to study via a two-semester model in Bond's January and September semesters.

Bachelor of Commerce

Duration	Subjects	Starting	IELTS	CRICOS	Fee*
6 semesters (2 years)	24	Jan May Sep	6.5 (6.0)	063059D	\$114,480 (\$19,080 per semester)

If you are interested in a professional career in accounting, economics or finance, then a Bachelor of Commerce is a step in the right direction. As a Commerce student at Bond, you will have unparalleled access to Bond Business School's two financial trading rooms and 40 Bloomberg data-sourcing terminals. In addition, you will have the opportunity to gain Bloomberg certification and unlock your potential for more job opportunities. Recognised worldwide, completion of the program certifies that the individual has attained a high level of competency in using the Bloomberg professional service.

PROGRAM DESCRIPTION

- Develop your financial literacy, business analytic, decision making, leadership and management skills through experiential learning.
- You will be equipped to think creatively and critically, building the skills you need to effectively problem-solve, communicate professionally, work collaboratively, make ethical and responsible business decisions and work effectively in the ever-changing and increasingly complex global business environment.

MAJORS

As part of the program, you will complete one of the business majors below. Completing a second major or minor from the below list is also encouraged to diversify your skills and enhance your job prospects.

- Accounting
- Actuarial Science
- Big Data
- Economics
- Finance

COMBINED DEGREES

- Bachelor of Business / Bachelor of Commerce (CRICOS 088305M)
- Bachelor of Commerce / Bachelor of Laws (CRICOS 093908G)

PROFESSIONAL OUTCOMES

- Financial Analyst
- Economist
- Accountant
- Banker
- Business Analyst
- Risk Analyst
- Tax Consultant

Bachelor of Commerce (3 Year Program)

Duration	Subjects	Starting	IELTS	CRICOS	Fee*
6 semesters (3 years)	24	Jan Sep	6.5 (6.0)	077411M	\$114,480 (\$19,080 per semester)

- This program is designed for international students who wish to study via the two-semester model in Bond's January and September semesters.

*Fees per semester are based on an average calculation and may differ depending on the subjects and majors you take in a particular semester.

For more information on current fees, visit bond.edu.au/fees. Fees are not inclusive of additional costs such as Student Activities Membership, accommodation, textbooks and living costs.

Undergraduate Degrees		Duration	Subjects	Starting	IELTS	CRICOS	Fee*
Diploma of International Hotel and Tourism Management		2 semesters (8 months)	8	Jan May Sep	6.0 (5.5)	088313M	\$29,440 (\$14,720 per semester)
<ul style="list-style-type: none"> Prepare for professional and managerial roles in the global tourism industry. Learn innovative and entrepreneurial strategies for tourism and hotel industries. This program can be used as a pathway into several Bond programs, with successful completion guaranteeing entry into the Bachelor of International Hotel and Tourism Management with 8 subjects of credit. 							
Bachelor of International Hotel and Tourism Management		6 semesters (2 years)	24	Jan May Sep	6.5 (6.0)	063584E	\$114,480 (\$19,080 per semester)
<p>With more than 12 million visitors annually, there is no better place to study Hotel and Tourism Management than the Gold Coast - the tourism capital of Australia. Bond has strong relationships with Marriott, Accor, Hilton, InterContinental, Sheraton, Wyndham and many other international tourism organisations to ensure that you have the opportunity to see real industry projects and undertake internships throughout your studies.</p>		PROGRAM DESCRIPTION <ul style="list-style-type: none"> Study asset, revenue and human resource management within hotel and tourism businesses. You will complete 400 hours of work experience in a hotel, tourism or event environment as part of the program. 		MAJORS <p>You can complete up to two majors, or one major and your choice of electives. Majors are chosen from:</p> <ul style="list-style-type: none"> Entrepreneurship and Innovation International Business Management Marketing Marketing Communication 		PROFESSIONAL OUTCOMES <p>This program will prepare you for professional and managerial roles in the tourism industry. Work in a range of fields upon graduation, including:</p> <ul style="list-style-type: none"> Event Coordinator / Manager Marketing Coordinator / Manager Hotel Manager Sales Coordinator / Manager Revenue Coordinator / Manager Assistant Manager Research Coordinator Duty Manager 	
Diploma of Sport Management		2 semesters (8 months)	8	Jan May Sep	6.0 (5.5)	078901G	\$29,440 (\$14,720 per semester)
<ul style="list-style-type: none"> Learn skills in athlete development; how to produce sporting information and media content; managing teams, leadership, communication, conflict resolution, problem solving, rational and critical thinking, and managing finances. This program can be used as a pathway for entry into several Bond programs, with successful completion guaranteeing entry into the Bachelor of Sport Management with 8 subjects of credit. 							
Bachelor of Sport Management		6 semesters (2 years)	24	Jan May Sep	6.5 (6.0)	096558A	\$114,480 (\$19,080 per semester)
<ul style="list-style-type: none"> Become equipped with a strong foundation in contemporary business skills and unique areas of sport specific practices. Taught by leading experts in law, sport, business and public relations. Upon graduation, you can work in a range of settings in the multi-faceted sport industry at local, national and international levels. Learn about professional sporting clubs, elite athlete development and management, media, marketing, tourism and event management. 							



DR BADEN U'REN

Assistant Professor of Entrepreneurship

Baden draws upon his industry and startup knowledge to deliver a practical and relevant educational experience to his students. He previously worked at NAB and QIC Private Equity and is a cofounder of two innovative businesses: one in ag-tech and the other in veterinary services.

TEACHING SUBJECTS

- Creating and Growing a Business
- Entrepreneurship and Innovation
- Business Model Generation

TEACHING AWARDS

- Australian Award for University Teaching (2008, 2016)
- Vice Chancellor's Award for Outstanding Contribution to Student Learning (2016)
- Faculty Award for External Engagement (2014)

BEST THING ABOUT BOND

The day that Richard Branson arrived in his helicopter: we hosted him in an informal Q&A session with a packed theatre of wide-eyed Bondies, and he left with one of our entrepreneurship students bound for a music festival.

Postgraduate Degrees

Master of Accounting

PROGRAM DESCRIPTION

- Gain the knowledge and skills needed to work in the accounting profession.
- Designed for recent graduates and professionals in fields other than accounting, however accounting graduates may be eligible to enter the program with advanced standing.

ENTRY REQUIREMENTS

- An undergraduate degree in any discipline other than accounting; or
- A non-degree professional accounting qualification with at least five years' work experience.
- Applicants with prior Accounting qualifications may be eligible for advanced standing.

4
semesters
(1 year, 4
months)

12
Jan
May
Sep

6.5
(6.0)

063115A

\$60,360

(\$15,090
per
semester)

Master of Accounting (Professional)

5
semesters
(92 weeks)

13
Jan
May
Sep

6.5
(6.0)

063521J

\$65,390

(\$13,078
per
semester)

The Master of Accounting program gives those with undergraduate credentials in fields other than accounting an opportunity to gain a professional accounting qualification. In addition, you will develop self-analysis and reflective learning skills and apply theoretical solutions for practical workplace problems. You will also have the opportunity to gain a Bloomberg certification during your degree and unlock your potential for more job opportunities in the global market.

PROGRAM DESCRIPTION

- Gain the knowledge and skills needed to work in the accounting profession.
- Designed for recent graduates and professionals in fields other than accounting, however accounting graduates may be eligible to enter the program with advanced standing.
- Master of Accounting (Professional) includes a 20-week Work Integrated Learning component to provide real world experience before you graduate.

ENTRY REQUIREMENTS

- An undergraduate degree in any discipline other than accounting; or
- A non-degree professional accounting qualification with at least five years' work experience.
- Applicants with prior Accounting qualifications may be eligible for advanced standing.

PROFESSIONAL OUTCOMES

- Master of Accounting (Professional) graduates are eligible for employment in professional accounting practices (public accounting or chartered accountants), corporations, the public sector and not-for-profit organisations. The degree is also useful to managers who are exposed to accounting on a day-to-day basis.



Bond Business undergraduate and postgraduate degrees are internationally recognised and accredited worldwide.

Master of Actuarial Practice

PROGRAM DESCRIPTION

- This degree allows students with an undergraduate degree in a non-related field an opportunity to complete Part 1 and Part 2 with the Actuaries Institute.
- Study economics, statistics, finance and data analytics for the management of risk and business decision making.
- Contains a 20-week thesis component in the final semester.
- You will have the opportunity to undertake a four subject specialisation, plus one elective; or complete five electives.

SPECIALISATION

The recommended specialisation is Big Data, but also available are:

- Digital Business
- Finance
- International Business
- Marketing
- Tourism and Hotel Management

ENTRY REQUIREMENTS

- Completion of an Australian Qualifications Framework Level 7 Bachelor degree in a discipline other than actuarial science, and well developed mathematical abilities.

5
semesters
(92 weeks)

20
Jan
May
Sep

6.5
(6.0)

083211B

\$102,810

(\$20,562
per
semester)

Master of Actuarial Science

PROGRAM DESCRIPTION

- This degree allows students with an undergraduate degree in a non-related field an opportunity to complete Part 1 with the Actuaries Institute.
- The program combines advanced mathematics, statistics, data analytics, actuarial risk theory, finance, economics and accounting subjects with large-scale, real-life commercial data analysis.

ENTRY REQUIREMENTS

- Completion of an Australian Qualifications Framework Level 7 Bachelor degree in a discipline other than actuarial science, and well developed mathematical abilities.

3
semesters
(1 year)

12
Jan
May
Sep

6.0
(6.0)

092654M

\$61,250

(\$20,416
per
semester)

Master of Actuarial Science (Professional)

5
semesters
(92 weeks)

17
Jan
May
Sep

6.0
(6.0)

083209G

\$87,680

(\$17,536
per
semester)

Provisionally accredited by the Actuaries Institute, the Master of Actuarial Science (Professional) is an innovative and immersive program that combines advanced mathematics, statistics, data analytics, actuarial risk theory, finance, economics and accounting subjects with large-scale, real-life commercial data analysis.

PROGRAM DESCRIPTION

- This degree allows students with an undergraduate degree in a non-related field an opportunity to complete Part 1 with the Actuaries Institute.
- The program combines advanced mathematics, statistics, data analytics, actuarial risk theory, finance, economics and accounting subjects with large-scale, real-life commercial data analysis.
- Master of Actuarial Science (Professional) includes a 20-week Work Integrated Learning component to provide real world experience before you graduate.

ENTRY REQUIREMENTS

- Completion of an undergraduate degree from a recognised institution, and well developed mathematical abilities.

PROFESSIONAL OUTCOMES

- The Master of Actuarial Science will prepare students for rewarding careers in a range of disciplines, including climatology, consulting, data analytics, e-commerce, economics, finance, health, insurance, infrastructure, research, risk management, safety, science, statistics, superannuation, technology.



Unparalleled access to Bond Business School's two financial trading rooms and 40 Bloomberg terminals - the most of any university in Australia.

*Fees per semester are based on an average calculation and may differ depending on the subjects and majors you take in a particular semester.

For more information on current fees, visit bond.edu.au/fees. Fees are not inclusive of additional costs such as Student Activities Membership, accommodation, textbooks and living costs.

Postgraduate Degrees		Duration	Subjects	Starting	IELTS	CRICOS	Fee*
Master of Actuarial Science (Specialisation) PROGRAM DESCRIPTION <ul style="list-style-type: none"> This degree allows students with an undergraduate degree in a non-related field an opportunity to complete Part 1 with the Actuaries Institute. This degree allows you to choose a specialisation to identify as an expert in a specific area of Actuarial Science (recommended specialisation is Big Data, however you also have the option to choose any Bond Business School specialisation). ENTRY REQUIREMENTS <ul style="list-style-type: none"> Completion of an undergraduate degree from a recognised institution, and well developed mathematical abilities. SPECIALISATIONS <ul style="list-style-type: none"> Big Data Digital Business Finance International Business Marketing 		4 semesters (1 year, 4 months)	12	Jan May Sep	6.0 (6.0)	092655K	\$81,370 (\$20,342 per semester)
Graduate Certificate of Business PROGRAM DESCRIPTION <ul style="list-style-type: none"> This degree provides students with a foundation in a variety of business practices and the basic skills required of a global leader. Upon completion students may wish to pursue a pathway into the Master of Business. ENTRY REQUIREMENTS <ul style="list-style-type: none"> Completion of an Australian Qualifications Framework Level 7 Bachelor degree. 		1 semester (4 months)	4	Jan May Sep	6.5 (6.0)	063164C	\$20,680
Master of Business PROGRAM DESCRIPTION <ul style="list-style-type: none"> Develop your planning, analytical and interpersonal skills to professionally advance your career prospects in business. Classes combine theoretical knowledge in business with practical insights delivered through case studies, guest lectures and work integrated learning. ENTRY REQUIREMENTS <ul style="list-style-type: none"> Completion of an Australian Qualifications Framework Level 7 Bachelor degree. 		4 semesters (1 year, 4 months)	12	Jan May Sep	6.5 (6.0)	063119G	\$61,060 (\$15,265 per semester)
 Master of Business (Professional) <p>The Master of Business (Professional) is a valuable step for those looking to change their professional focus and acquire a strong grounding for career advancement in business. The program provides students with a foundation in a variety of business practices, plus the ability to gain a specialisation.</p> <p>PROGRAM DESCRIPTION</p> <ul style="list-style-type: none"> Develop your planning, analytical and interpersonal skills to professionally advance your career prospects in business. Classes combine theoretical knowledge in business with practical insights delivered through case studies, guest lectures and work integrated learning. Master of Business (Professional) includes a 20-week Work Integrated Learning component to provide real world experience before you graduate. <p>PROFESSIONAL OUTCOMES</p> <ul style="list-style-type: none"> Master of Business (Professional) graduates will have highly developed planning, analytical and interpersonal skills that will enable them to professionally advance their career prospects in business. The program also provides global networking opportunities. <p>SPECIALISATIONS</p> <p>You will complete one specialisation from the following list:</p> <ul style="list-style-type: none"> Big Data Digital Business Finance International Business Marketing Tourism and Hotel Management <p> Access to the Business School's formal mentor program where you will be supported by academic staff, senior students and alumni.</p>		5 semesters (92 weeks)	13	Jan May Sep	6.5 (6.0)	063520K	\$66,090 (\$13,218 per semester)
Graduate Certificate of Business Administration PROGRAM DESCRIPTION <ul style="list-style-type: none"> An introductory generalist management program that blends industry-relevant research with practical applications and challenges. Learning outcomes are centred on introducing students to the of three pillars of leadership, global business and entrepreneurship. This program can be used as a pathway into the Master of Business Administration for those with the required work experience but not the academic background. ENTRY REQUIREMENTS <ul style="list-style-type: none"> Completion of an Australian Qualifications Framework Level 7 Bachelor degree. 		1 semester (4 months)	4	Jan May Sep	6.5 (6.0)	078187F	\$20,680

Postgraduate Degrees

Master of Business Administration

PROGRAM DESCRIPTION

- Ranked among the Top 10 MBA's in Australia by students in the 2017 Australian Financial Review Boss MBA Rankings, the Bond Master of Business Administration (MBA) transforms you personally and professionally to prepare you for challenges anywhere in the world.
- Opportunity to take a study tour in China or Silicon Valley as an elective subject
- Invitations to network with industry on a regular basis at the Bond Business Leaders Forums and Business Links events.

ENTRY REQUIREMENTS

- Quality undergraduate degree from a recognised institution
- Minimum three years' work experience
- Cover letter detailing your career goals, future ambitions and experience
- Two professional referee reports
- Interview with the Program Director or MBA Coordinator

4 semesters (1 year, 4 months)	12	Jan May Sep	6.5 (6.0)	063120D	\$61,720 (\$15,430 per semester)
-----------------------------------	----	-------------------	--------------	---------	---

Master of Business Administration (Professional)

5 semesters (92 weeks)	13	Jan May Sep	6.5 (6.0)	069029F	\$66,750 (\$13,350 per semester)
---------------------------	----	-------------------	--------------	---------	---

In today's fast paced, dynamic and highly competitive business arena, organisations require innovative, resourceful and ambitious professionals to get the job done. A Master of Business Administration (MBA) is one of the most prestigious postgraduate qualifications and is highly regarded worldwide offering the opportunity to get more from your career, move up the ladder or change industry.

PROGRAM DESCRIPTION

- Designed for international students, the program includes an additional 20-week professional portfolio component, designed to promote and support learning, personal development and professional practice in the Australian business environment.
- Every student who achieves a GPA of 2.0 by their penultimate semester has the opportunity to complete an internship as part of this program.

ENTRY REQUIREMENTS

- Quality undergraduate degree from a recognised institution
- Minimum three years' work experience
- Cover letter detailing your career goals, future ambitions and experience
- Two professional referee reports
- Interview with the Program Director or MBA Coordinator



Ranked among the Top 10 MBAs in Australia by students in the 2017 Australian Financial Review Boss MBA Rankings.

Master of Business Administration (Specialisation)

PROGRAM DESCRIPTION

- Add on a specialisation to your MBA program
- A specialisation is useful if you are planning to use the MBA to change careers or if you want more knowledge in a particular area.

ENTRY REQUIREMENTS

- Quality undergraduate degree from a recognised institution
- Minimum three years' work experience
- Cover letter detailing your career goals, future ambitions and experience
- Two professional referee reports
- Interview with the Program Director or MBA Coordinator

SPECIALISATIONS

- Big Data
- Digital Business
- Finance
- International Business
- Marketing
- Tourism and Hotel Management

5 semesters (1 year, 8 months)	16	Jan May Sep	6.5 (6.0)	065679D	\$77,130 (\$15,426 per semester)
-----------------------------------	----	-------------------	--------------	---------	---

BBT Global Leadership MBA

PROGRAM DESCRIPTION

- This MBA is taught in partnership with Business Breakthrough University in Japan, and is taught entirely in English.
- This MBA specialises in the interactions between Asian economies, specifically Japan, and the rest of the world.
- Focuses on core frameworks for business decision making based on entrepreneurship and innovation, and in evidence-based strategy formulation.
- The entire program can be taken online however there are two compulsory study tours to Bond University for 2 weeks that students will need to undertake to graduate.

ENTRY REQUIREMENTS

- Minimum three years' management experience.
- Quality undergraduate degree from a recognised institution.

4 semesters (1 year, 4 months)	13	Jan May Sep	6.5 (6.0)		2,880,000 Yen (720,000 Yen per semester)
-----------------------------------	----	-------------------	--------------	--	---

Master of Finance

PROGRAM DESCRIPTION

- A quantitatively rigorous program that provides you with a strong understanding of the financial industry, financial principles and their application to corporate financial policy, international financial markets, derivative assets and their associated markets.
- The Master of Finance has the subjects required to meet Part 2 accreditation by the Actuaries Institute.

ENTRY REQUIREMENTS

- An undergraduate degree from a recognised institution; and
- Completion of a subject deemed equivalent to either Fundamentals of Finance or Managerial Finance.
- A personal interview may also be required.

RECOMMENDED STUDY PATHWAYS

- Bachelor of Commerce > Master of Finance (2 years, 8 months)
- Bachelor of Actuarial Science > Master of Finance (2 years, 8 months)

4 semesters (1 year, 4 months)	12	Jan May Sep	6.0 (6.0)	063125K	\$60,780 (\$15,195 per semester)
-----------------------------------	----	-------------------	--------------	---------	---

Postgraduate Degrees	Duration	Subjects	Starting	IELTS	CRICOS	Fee*
Master of Finance (Professional) PROGRAM DESCRIPTION <ul style="list-style-type: none"> This program follows the same structure as the Master of Finance, with an additional 20-week Work Integrated Learning component. ENTRY REQUIREMENTS <ul style="list-style-type: none"> An undergraduate degree from a recognised institution; and Completion of a subject deemed equivalent to either Fundamentals of Finance or Managerial Finance. A personal interview may also be required. 	5 semesters (92 weeks)	13	Jan May Sep	6.0 (6.0)	077989B	\$65,810 (\$13,162 per semester)
Master of Financial Management PROGRAM DESCRIPTION <ul style="list-style-type: none"> Gain the essential knowledge and analytical skills for making key financial decisions faced by corporate managers. Designed for recent graduates and professionals in fields other than finance. Customise your program with a free choice of business electives so you can tailor your degree to your interests or career objectives. ENTRY REQUIREMENTS <ul style="list-style-type: none"> Completion of an Australian Qualifications Framework Level 7 Bachelor degree. SPECIALISATIONS <ul style="list-style-type: none"> Big Data Digital Business International Business Marketing Tourism and Hotel Management RECOMMENDED STUDY PATHWAY <ul style="list-style-type: none"> Bachelor of Commerce > Master of Financial Management (2 years, 8 months) 	4 semesters (1 year, 4 months)	12	Jan May Sep	6.0 (6.0)	077990J	\$60,920 (\$15,230 per semester)
Master of Financial Management (Professional) PROGRAM DESCRIPTION <ul style="list-style-type: none"> This program follows the same structure as the Master of Financial Management, with an additional 20-week Work Integrated Learning component. ENTRY REQUIREMENTS <ul style="list-style-type: none"> Completion of an Australian Qualifications Framework Level 7 Bachelor degree. SPECIALISATIONS <ul style="list-style-type: none"> Big Data Digital Business International Business Marketing Tourism and Hotel Management 	5 semesters (92 weeks)	12	Jan May Sep	6.0 (6.0)	077991G	\$65,950 (\$13,190 per semester)
Graduate Certificate in Sport Management PROGRAM DESCRIPTION <ul style="list-style-type: none"> Designed for students to gain a strong foundation in sport management sub-disciplines including finance, high performance sport, organisational behaviour, and international sport business management. This program is suited to those seeking to upgrade their qualifications or change careers. ENTRY REQUIREMENTS <ul style="list-style-type: none"> Completion of an Australian Qualifications Framework Level 7 Bachelor degree. 	1 semester (4 months)	4	Sep	6.5 (6.0)	096560G	\$20,540
Graduate Diploma in Sport Management PROGRAM DESCRIPTION <ul style="list-style-type: none"> Develop advanced knowledge of and skills relevant to navigating managerial challenges and opportunities in the international sport industry. Designed to enhance the career opportunities of established professionals, as well as assist individuals working in other industries to develop advanced knowledge and skills required to work in the sporting sector. ENTRY REQUIREMENTS <ul style="list-style-type: none"> Completion of an Australian Qualifications Framework Level 7 Bachelor degree in a related field to the proposed degree. 	2 semesters (8 months)	8	Sep	6.5 (6.0)	096561F	\$40,940 (\$20,470 per semester)
Master of Sport Management PROGRAM DESCRIPTION <ul style="list-style-type: none"> This program focuses on high performance sport, business strategies, strategic sports marketing, event and facilities management, finance, law, governance and organisational leadership. Bond enjoys affiliations with numerous local, national and international sport organisations, such as the Australian Olympic Committee, Events Management Queensland, Australian Institute of Sport, Australian Sports Commission and World Rugby. Gain practical industry experience and network through the optional internship component of this program. This internship is separate to the 20-week Work Integrated Learning component of the Professional program below. ENTRY REQUIREMENTS <ul style="list-style-type: none"> Completion of an Australian Qualifications Framework Level 7 Bachelor degree. SPECIALISATIONS <ul style="list-style-type: none"> Big Data Digital Business Finance International Business Marketing Tourism and Hotel Management 	4 semesters (1 year, 4 months)	12	Jan May Sep	6.5 (6.0)	096559M	\$61,200 (\$15,300 per semester)
Master of Sport Management (Professional) PROGRAM DESCRIPTION <ul style="list-style-type: none"> This program follows the same structure as the Master of Sport Management, with an additional 20-week Work Integrated Learning component. ENTRY REQUIREMENTS <ul style="list-style-type: none"> Completion of an Australian Qualifications Framework Level 7 Bachelor degree in a related field to the proposed degree. 	5 semesters (92 weeks)	13	Jan May Sep	6.5 (6.0)	096696B	\$66,230 (\$13,246 per semester)

Faculty of Society & Design

Abedian

School of Architecture



RESEARCH INTENSIVE

The Faculty of Society & Design houses the Interdisciplinary Centre for the Artificial Mind (iCAM), Centre for Comparative Construction Research and Centre for Autism Spectrum Disorder (CASD).



AT THE FOREFRONT OF SUSTAINABILITY

Our Sustainability Building was the first building in Australia to achieve a 6 Star Green Star - Education PILOT Certified Rating for design by the Green Building Council of Australia.



GLOBAL ENDORSEMENTS

Accreditation benefits our students by producing graduates who are ready for the workforce. See bond.edu.au/fsd for a full list of Bond's accreditations.



FILM AND TELEVISION STUDIOS

Students have access to state-of-the-art film facilities and equipment, such as the Sony F65 camera, 35mm and 16mm camera kits, all with Zeiss prime lenses, and high-end Panasonic Cine-HD cameras. There are over 40 editing stations, with Avid Media Composer and Final Cut Pro, Pro-Tools LE and 5.1 HD audio mixing suites, and a fully equipped three-camera digital television studio.



PSYCHOLOGY CLINIC

A first-class teaching and research facility, the Bond University Psychology Clinic is a private University teaching clinic offering mental health services to the Gold Coast community. Student psychologists working in the Clinic have completed at least four years of full-time equivalent university training in psychology and undertake their internships under the supervision of highly qualified academic staff.



LEVEL UP LAB AND DEVELOPMENT STUDIO

The Level Up Lab is a creative space that is fitted out with state-of-the-art equipment including the latest PC and gaming consoles, virtual reality technologies and an extensive library of game titles. The Development Studio is a cutting-edge teaching space with the latest development software and technology, such as 3D printing, VR / AR and hi-spec PC's.



ABEDIAN SCHOOL OF ARCHITECTURE

The Abedian School of Architecture is a leading design-driven professional school, characterised by an international outlook and motivated by the goal of graduating architects capable of shifting the direction of future practice. All students get their own desk and 24 / 7 access to the building, as well as being taught in small, hands-on classes through a collaborative design studio environment.

INDUSTRY LINKS

The Faculty has developed industry partnerships with leading organisations including:

- AECOM
- Amnesty International
- Austrade
- Australian Good Food Guide
- Australian Institute of Building Surveyors
- Australian Institute of International Affairs
- Australian Institute of Project Management
- Australian Institute of Quantity Surveyors
- Australian Property Institute
- Channel 7 Australia
- Channel 10 Australia
- General Electric
- Gold Coast Bulletin
- Lend Lease
- Royal Institute of Chartered Surveyors
- Soheil Abedian
- Smart Erickson
- Washington Internship Institute

Undergraduate Degrees

Duration
Subjects
Starting
IELTS
CRICOS
Fee*

Bachelor of Architectural Studies

6 semesters (2 years)
19 Jan
6.5 (6.0)
072544E
\$114,480 (\$19,080 per semester)

Globally, Architects are redefining the built and natural environment. By studying a Bachelor of Architectural Studies in Australia, you will learn fundamental theories and practical application through a strong focus on design, construction and communication.

PROGRAM DESCRIPTION

- Designed to create emerging architectural professionals with fundamental competencies in design ability, problem solving, technical skill, and theoretical frameworks, that give graduates the capability to address complex problems of the built and natural environment in the 21st century and beyond.
- Successful completion of this program will enable you to progress to Bond's Master of Architecture (CRICOS 078184J), which can lead to becoming a Registered Architect.

PROFESSIONAL OUTCOMES

- This program prepares you with theoretical and practical experience relating to design, problem solving, construction and communication that can be applied to a wide range of careers.
- Many graduates establish careers in design studios, virtual environment design (e.g. gaming, cinema and animation), web and graphic design, fashion, advertising, industrial design, arts management and visual arts.



Taught in the Abedian School of Architecture, where you'll have 24 / 7 access.



Opportunities to see a range of professional and academic guest speakers through the Abedian School of Architecture Lecture Series.

Bachelor of Arts

6 semesters (2 years)
24 Jan May Sep
6.5**
063052M
\$114,480 (\$19,080 per semester)

PROGRAM DESCRIPTION

- A generalist program offering you flexibility in your choice of majors with the opportunity to either specialise in a particular area of study, or to select complementary majors.

MAJORS

You will complete two or more majors, or one double major, from the list below:

- Advertising
- Australian Studies
- Behaviour Management and Counselling
- Communication and Corporate Communication
- Criminology*
- Film and Television*
- Global Studies
- Interactive Media and Design
- International Relations*
- Journalism*
- Languages
- Media and Social Media
- Multimedia
- Philosophy
- Psychology*
- Public Relations

*Denotes a double major can be undertaken in this area.

COMBINED DEGREES

- Bachelor of Arts / Bachelor of Laws (CRICOS 093912A)

Diploma of Communication

2 semesters (8 months)
8 Jan May Sep
6.0 (5.5)
078664D
\$29,440 (\$14,720 per semester)

- The Diploma of Communication opens up a wide range of career and further study opportunities in disciplines ranging from film and television through to journalism and multimedia.
- This program can be used as a pathway for entry into several Bond programs, with successful completion guaranteeing entry into the Bachelor of Arts, Bachelor of Communication, Bachelor of Communication (Business), Bachelor of Psychological Science or Bachelor of Laws with 8 subjects of credit.

Bachelor of Communication

6 semesters (2 years)
24 Jan May Sep
6.5**
063062J
\$114,480 (\$19,080 per semester)

PROGRAM DESCRIPTION

- The ideal mix of theory and practice, combining foundational studies in communication and media with focused studies in professional disciplines including journalism and public relations.
- Pursue focused areas of study in the fields of corporate communication, media and advertising.

MAJORS

You will complete six subjects from one of the following specialist areas:

- Advertising
- Communication
- Corporate Communication
- Film and Television
- Journalism*
- Media
- Multimedia
- Social Media
- Public Relations

*Denotes a double major can be undertaken in this area.

COMBINED DEGREES

- Bachelor of Communication / Bachelor of Laws (CRICOS 093915J)

Bachelor of Communication (Business)

6 semesters (2 years)
24 Jan May Sep
6.5**
063063G
\$114,480 (\$19,080 per semester)

PROGRAM DESCRIPTION

- This degree will provide you with the knowledge and skills to work in marketing, advertising, organisational behaviour and communication.
- Explore the communication and business industry while tailoring your studies to your relevant career ambitions.

MAJORS

Students specialise by combining a major in Marketing with a major from one of the following areas:

- Advertising
- Communication Studies
- Corporate Communication
- Journalism*
- Television Journalism*
- Multimedia
- Public Relations
- Social Media

*Denotes a double major can be undertaken in this area.

COMBINED PROGRAMS

- Bachelor of Communication (Business) / Bachelor of Laws (CRICOS 093914K)

*Fees per semester are based on an average calculation and may differ depending on the subjects and majors you take in a particular semester.

For more information on current fees, visit bond.edu.au/fees. Fees are not inclusive of additional costs such as Student Activities Membership, accommodation, textbooks and living costs.

**IELTS score 6.5 (Writing 6.5, Reading 6.0, Listening 6.0, Speaking 6.0)

Undergraduate Degrees

Duration	Subjects	Starting	IELTS	CRICOS	Fee*
----------	----------	----------	-------	--------	------

Bachelor of Construction Management and Quantity Surveying

6 semesters (2 years)	24	Jan May Sep	6.5 (6.0)	078183K	\$114,480 (\$19,080 per semester)
--------------------------	----	-------------------	--------------	---------	--

As one of the largest economic sectors, the construction industry continues to expand. Employers seek graduates with theoretical knowledge and practical experience across a variety of fields. The Bachelor of Construction Management and Quantity Surveying equips graduates with the necessary knowledge and skill set, transferable across a range of career paths.

PROGRAM DESCRIPTION

- This degree covers a comprehensive range of subjects in the field of construction management and quantity surveying, focusing on the management and delivery of complex construction projects.
- The program addresses a range of topics including construction techniques, contract administration, finance, planning processes, plant and equipment, and risks.
- Contains a strong sustainability theme that equips you with distinctive skills that are highly sought after in the built environment sector.

PROFESSIONAL OUTCOMES

- Construction management
- Contract administration
- Site management
- Facilities management
- Building services
- Quantity surveying
- Property development
- Project management
- Cost management
- General management
- Skills applicable to civil engineering sector
- Skills applicable to mining sector

ACCREDITATIONS

- Upon successful completion of this program, you will be internationally recognised by Royal Institution of Chartered Surveyors, as well as the Chartered Institute of Building (CIOB).
- This program is nationally accredited with the Australian Institute of Quantity Surveyors (AIQS), and meets the educational requirement set by the Queensland Building and Construction Commission (QBCC) for the granting of an Open Builders License.

Bachelor of Creative Arts

6 semesters (2 years)	24	Jan Sep	6.5**	092144M	\$114,480 (\$19,080 per semester)
--------------------------	----	------------	-------	---------	--

- Creative industries are a core part of the global emerging services economy, and this innovative program tailors its offerings to students' unique ambitions and interests.
- Choose from over 40 specialist major options, including Social Media, Advertising, Language, Criminology, International Relations, and Entrepreneurship and Innovation, to name a few.

MAJORS

This program contains three major studies:

- A compulsory major in Creative Writing
- A choice of major in a creative discipline
- A choice of major from either humanities or business

Bachelor of Film and Television

6 semesters (2 years)	24	Jan May Sep	6.5**	063066E	\$114,480 (\$19,080 per semester)
--------------------------	----	-------------------	-------	---------	--

Put your dreams into motion. Study a Bachelor of Film and Television designed for the next generation of filmmakers. At Bond, our students have full access to state-of-the-art equipment of the highest industry standards. Our academic teaching staff are accomplished industry professionals with a wealth of experience. Our graduates are working with some of the biggest names in Hollywood across the globe. This is your chance to launch your career in film and television!

PROGRAM DESCRIPTION

- A heavily hands-on and project-based degree.
- Balances creative practice theory with practical production experience.
- Focused on the key creative areas of directing, producing, screenwriting, cinematography, editing, sound and production design.
- You will gain skills in traditional and emerging production technologies, develop cinema aesthetics, critical faculties, and receive insight into the commercial and industrial aspects of international film and television industry.

PROFESSIONAL OUTCOMES

- Cinematographer
- Director
- Editor
- Producer
- Production Designer
- Screenwriter
- Sound Designer
- Video Content Producer



You will work on at least nine film projects over the course of your degree.



You will have complete access to all 24 / 7 Film and Television facilities. These come equipped with Hollywood and industry standard state-of-the-art filming technology, with over 40 Mac editing suites, recording studio, digital television studio, audio mixing suites, control room and production suites.

Bachelor of Film and Television (3 Year Program)

6 semesters (3 years)	24	Jan Sep	6.5**	077410A	\$114,480 (\$19,080 per semester)
--------------------------	----	------------	-------	---------	--

- For international students who wish to study via a two semester model where you will study in January and September semesters.

Bachelor of Global Studies (Sustainability)

6 semesters (2 years)	24	Jan May Sep	6.5**	078186G	\$114,480 (\$19,080 per semester)
--------------------------	----	-------------------	-------	---------	--

- Integrates economic, social and environmental perspectives of sustainability to business, government and community.
- The program takes a multidisciplinary approach to addressing complex challenges of global sustainability.
- You will gain an increased understanding of critical sustainability issues in global and local contexts.
- Upon completion, you will have the cognitive skills to identify, analyse and synthesise knowledge relating to different causes and possible solutions of global sustainability challenges.

Bachelor of Interactive Media and Design

6 semesters (2 years)	24	Jan May Sep	6.5**	077985F	\$114,480 (\$19,080 per semester)
--------------------------	----	-------------------	-------	---------	--

- Gain the essential skills needed for the next generation of jobs to thrive in our forthcoming futuristic environment.
- This degree is founded on the growing market power of the creative industries, which are based on design, web and procedural communications.
- Specialisations within the degree include computer games, digital media and design, advertising, film and television and communications.
- Upon completion of this program, you could be a web designer, graphic designer, software engineer, animator, game designer, virtual reality developer, mobile app creator and many more career opportunities in the growing multimedia and digital space. This degree aims to prepare you for jobs that may not even exist yet.

*Fees per semester are based on an average calculation and may differ depending on the subjects and majors you take in a particular semester.

For more information on current fees, visit bond.edu.au/fees. Fees are not inclusive of additional costs such as Student Activities Membership, accommodation, textbooks and living costs.

**IELTS score 6.5 (Writing 6.5, Reading 6.0, Listening 6.0, Speaking 6.0)

Undergraduate Degrees

Duration

Subjects

Starting

IELTS

CRICOS

Fee*

Bachelor of International Relations

6
semesters
(2 years)

24

Jan
May
Sep

6.5**

063074E

\$114,480

PROGRAM DESCRIPTION

- Enhance your international perspective and understanding of world politics and policies, as well as world development and international issues.
- You will have the opportunity to take part in active learning exercises throughout your degree, such as for-credit internships in Australia and overseas, as well as Model UN programs around the world.

PROFESSIONAL OUTCOMES

- Defence
- Diplomacy
- Foreign affairs
- International business
- Media
- Trade

MAJORS

- Global Governance and Politics
- International Diplomacy
- International Relations

COMBINED DEGREE OPTIONS

- Bachelor of International Relations / Bachelor of Business (CRICOS 088310C)
- Bachelor of International Relations / Bachelor of Laws (CRICOS 093916G)

(\$19,080
per
semester)

Bachelor of International Relations (3 Year Program)

6
semesters
(3 years)

24

Jan
Sep

6.5**

094543B

\$114,480

- For international students who wish to study via a two semester model where you will study in January and September semesters

(\$19,080
per
semester)

Bachelor of Journalism

6
semesters
(2 years)

24

Jan
May
Sep

6.5**

063077B

\$114,480

PROGRAM DESCRIPTION

- Students are trained in news writing, broadcast reporting, photography, media rounds and industries, digital publication and design, media ethics and law.
- Students will have the opportunity to report for local, national and international media outlets throughout their degree and can undertake internships in Australia or internationally in places like New York, Washington DC and London.

MAJORS

You will be able to choose one major from the list below:

- Advertising
- Australian Studies
- Business Context and Environment
- Communication or Corporate Communication
- Creative Writing
- Criminology
- Environmental Science and Management
- Film and Television
- International Relations
- Legal, Government and Crime Studies
- Media and Social Media
- Multimedia
- Public Relations
- Sport Industry
- Sustainable Environments and Planning

COMBINED DEGREE OPTIONS

- Bachelor of Journalism / Bachelor of Laws (CRICOS 093918F)

(\$19,080
per
semester)



2017 Abedian School of Architecture Spring Show - Architecture Student Exhibition.

*Fees per semester are based on an average calculation and may differ depending on the subjects and majors you take in a particular semester.

For more information on current fees, visit bond.edu.au/fees. Fees are not inclusive of additional costs such as Student Activities Membership, accommodation, textbooks and living costs.

**IELTS score 6.5 (Writing 6.5, Reading 6.0, Listening 6.0, Speaking 6.0)

Undergraduate Degrees	Duration	Subjects	Starting	IELTS	CRICOS	Fee*
Bachelor of Property <ul style="list-style-type: none"> Covers a comprehensive range of subjects within the property development and management industry, including construction practices, feasibility studies, finance, investment and valuation, property markets, sustainable development and urban development. Classes are delivered in Bond's Sustainable Development Building. Provides an opportunity to specialise in Property Valuation. 	6 semesters (2 years)	24	Jan May Sep	6.5 (6.0)	078181A	\$114,480 ((\$19,080 per semester)
Diploma of Criminology <ul style="list-style-type: none"> This diploma will familiarise you with the criminal justice system and give you the ability to draw on knowledge and perspectives from a range of disciplines such as law, sociology, psychology and history. This program can be used as a pathway for entry into several Bond programs, with successful completion guaranteeing entry into the Bachelor of Laws, Bachelor of Psychological Science or Bachelor of Social Science with 8 subjects of credit. 	2 semesters (8 months)	8	Jan May Sep	6.0 (5.5)	078658B	\$29,440 ((\$14,720 per semester)
Bachelor of Psychological Science <p>PROGRAM DESCRIPTION</p> <ul style="list-style-type: none"> Provides you with a scientific understanding of normal psychological processes such as perception, memory, learning, motivation, psychobiology, personality, emotion, developmental psychology and social relationships, as well as training in abnormal psychology. An Honours program is available for this degree. Applicants are assessed on merit and must have achieved a minimum GPA of 2.5 / 4.0 for all second and third level psychology subjects in their undergraduate studies. <p>COMBINED DEGREE OPTION</p> <ul style="list-style-type: none"> Bachelor of Psychological Science / Bachelor of Laws (CRICOS 093921M) <p>RECOMMENDED STUDY PATHWAYS</p> <p>The recommended pathways to becoming a registered Clinical Psychologist are:</p> <ul style="list-style-type: none"> Bachelor of Psychological Science > Bachelor of Psychological Science (Honours) > Master of Psychology (Clinical) Bachelor of Psychological Science > Graduate Diploma of Psychological Science > Master of Psychology (Clinical) 	6 semesters (2 years)	24	Jan May Sep	7.0 (6.5)	062655C	\$114,480 ((\$19,080 per semester)
Bachelor of Social Science <p>PROGRAM DESCRIPTION</p> <ul style="list-style-type: none"> Encompasses a mix of several disciplines including criminology, psychology, counselling and behaviour management. The program allows you to combine subjects to complete a degree whose title reflects a specialisation of studies in the social sciences area of the Faculty. <p>MAJORS</p> <p>You will complete two majors or a double major from one of the following options:</p> <ul style="list-style-type: none"> Double major in Criminology Psychology and Criminology Psychology and Behaviour Management <p>COMBINED DEGREE OPTION</p> <ul style="list-style-type: none"> Bachelor of Business / Bachelor of Social Science (CRICOS 088309G) 	6 semesters (2 years)	24	Jan May Sep	6.5**	063082E	\$114,480 ((\$19,080 per semester)
Bachelor of Sustainable Environments and Planning <p>PROGRAM DESCRIPTION</p> <ul style="list-style-type: none"> This program allows graduates to pursue careers in natural built environment. Learn in the University's Sustainable Development Building Precinct promoting sustainable practices of tomorrow. Environmental management has become increasingly important in the development and planning of our cities. Graduates of this program become knowledgeable in environmental science and management, and urban design and planning. This combination of knowledge and skill development allows graduates to pursue many career paths in the natural built environment. <p>MAJORS</p> <p>Graduate with two specialised majors:</p> <ul style="list-style-type: none"> Environmental Science and Management Urban Design and Planning Psychology and Counselling <ul style="list-style-type: none"> Criminology and Behaviour Management Criminology and Counselling 	6 semesters (2 years)	24	Jan May Sep	6.5 (6.0)	079536D	\$114,480 ((\$19,080 per semester)

*Fees per semester are based on an average calculation and may differ depending on the subjects and majors you take in a particular semester.

For more information on current fees, visit bond.edu.au/fees. Fees are not inclusive of additional costs such as Student Activities Membership, accommodation, textbooks and living costs.



**IELTS score 6.5 (Writing 6.5, Reading 6.0, Listening 6.0, Speaking 6.0)

A portrait of a man with a beard and short dark hair, wearing a black button-down shirt over a light-colored t-shirt. He is standing against a wall made of large, light-colored stone tiles. The lighting is soft and warm, coming from the side.

DHRUV ARORA

Master of Architecture
India

"I chose Bond for its accelerated study and weekly individual interaction with the teachers. Teachers in the Architecture School are well known Architects within the profession, and it's a pleasure to learn essential skills under their guidance. Being an Architecture student, we also get 24 hour studio access, which in itself is priceless."

Postgraduate Degrees		Duration	Subjects	Starting	IELTS	CRICOS	Fee*		
<h3>Master of Architecture</h3> <p>This degree is designed to develop you to be fearless in your design ability, as well as gain the confidence to change the world and the habitats of the future through your creative design skills, imaginative vision, strategic thinking and technical proficiency.</p> <div> Taught in the Abedian School of Architecture, where you'll have 24 / 7 access.</div> <div> Opportunities to see a range of professional and academic guest speakers through the Abedian School of Architecture Lecture Series.</div>	PROGRAM DESCRIPTION <ul style="list-style-type: none">You will experience research initiatives and studio workshops led by distinguished visiting professors and internationally recognised professionals.Some of the Abedian School of Architecture associations include the Architectural Association School of Architects (UK), The Bartlett School of Architecture, University College (UK), the Pratt Institute (USA) and Virginia Tech (USA).Access seven new design studios, computing and fabrication laboratories, a digital robotics laboratory, traditional workshops, reading and resource rooms, an atelier as well as impressive exhibition and event space.	ENTRY REQUIREMENTS <ul style="list-style-type: none">A combination of qualifications deemed to be equivalent to an undergraduate degree program approved by the Australia New Zealand Architecture Program Accreditation Procedure (ANZAPAP) with a credit average (GPA 2.0 / 4.0 or 5.0 / 7.0) and high quality portfolio of design work.	PROFESSIONAL OUTCOMES <ul style="list-style-type: none">Upon graduation, you will have the requisite work experience to gain eligibility towards the professional status of Architect in Australia and overseas.You will be able to work in architecture firms, government, construction, development, infrastructure and planning industries in Australia and overseas.	4 semesters (1 year, 4 months)	12	Jan May Sep	7.0 (6.5)	078184J	\$78,570 (\$19,642 per semester)
Master of Arts (by Research)	PROGRAM DESCRIPTION <ul style="list-style-type: none">Offered in most areas of study in the Faculty of Society & Design. For more information, visit bond.edu.au/fsd.Applicants need to give consideration to the specific research topic they wish to investigate. This should be determined in consultation with a member of the academic staff of the Faculty to see whether the Faculty can provide the appropriate supervision. ENTRY REQUIREMENTS <ul style="list-style-type: none">A four year (eight semesters) honours degree - First Class, 2A, 2B; orA qualification or combination of qualifications deemed to be equivalent to the above by the Higher Degrees by Research Committee.	6 semesters (2 years)		Jan May Sep	7.0 (6.5)	063454D	\$37,110 per annum		
Master of Arts (by Coursework)	PROGRAM DESCRIPTION <ul style="list-style-type: none">Offers an opportunity for you to continue studies in a particular area, or branch out into other areas.Upon graduation, you will possess a strong and broad set of skills essential to all professions, no matter what your chosen career.A range of majors are available in the program allowing you to tailor your qualifications to suit your specific career interests.Discipline areas include Criminology, International Relations, and Communication, among others. ENTRY REQUIREMENTS <ul style="list-style-type: none">An undergraduate degree from an approved institution in either international relations, political science, political studies, global studies and humanities / arts. Graduates from other disciplines may be considered.	3 semesters (1 year)	12	Jan May Sep	6.5**	078662F	\$41,900 (\$13,966 per semester)		
Graduate Certificate in TESOL (also available online*)	PROGRAM DESCRIPTION <ul style="list-style-type: none">Designed to provide initial training for teachers of English as a second language.You will complete at least 100 hours of a theoretical component and a minimum of six hours supervised classroom teaching.Provides the basis for language teaching methodology and its practical applications. ENTRY REQUIREMENTS <ul style="list-style-type: none">An undergraduate degree from an approved institution. <p>*The Graduate Certificate in TESOL (Online) is available to start in January, May and September.</p>	1 semester (4 months)	4	Jan	6.5**	063445E	\$9,560		
Master of Arts (TESOL) (also available online)	PROGRAM DESCRIPTION <ul style="list-style-type: none">The program aims to prepare prospective teachers of English as a Second Language for their future career and to assist current TESOL teachers in extending their professional knowledge.Subject content covers theoretical aspects of language, language teaching, language acquisition and the practical applications of these in language teaching. ENTRY REQUIREMENTS <ul style="list-style-type: none">Completion of an Australian Qualifications Framework Level 7 Bachelor degree or equivalent in education, language, linguistics, applied linguistics or language related disciplines at an approved institution; orRecognised qualification in teacher education; or hold an undergraduate degree, plus a certification in TESOL or a minimum five years' experience in teaching English.	3 semesters (1 year)	12	Jan May Sep	6.5**	077993F	\$28,680 (\$9,560 per semester)		
Master of Building Surveying	PROGRAM DESCRIPTION <ul style="list-style-type: none">Study with world-class academics and experienced practitioners in one of Australia's most environmentally friendly buildings.The program comprises two specialist subjects plus six shared core subjects.Recognised internationally by the Royal Institution of Chartered Surveyors (RICS) and nationally by the Australian Institute of Building Surveyors (AIBS). The BPB in New South Wales and QBCC in Queensland recognise the AIBS accreditation. ENTRY REQUIREMENTS <ul style="list-style-type: none">An Australian Qualifications Framework Level 7 Bachelor degree in a related field to the proposed degree; orCompletion of a Bond University Graduate Diploma of Building Surveying; or a combination of qualifications deemed to be equivalent to any of the qualifications listed in the AIBS Scheme for Assistant Building Surveyor, plus two years' building surveying experience or six years' experience in general building.	4 semesters (1 year, 4 months)	12	Jan May Sep	6.5 (6.0)	071287C	\$62,490 (\$15,622 per semester)		

Postgraduate Degrees

Master of Communication

3 semesters
(1 year)

12

Jan
May
Sep

6.5**

078660G

\$41,900

PROGRAM DESCRIPTION

- Choose from a dissertation or portfolio option, allowing you to develop your research and communication skills in an area of your interest.
- Choose from a variety of research topics across areas including but not limited to Journalism, Advertising, Social Media, Marketing and Public Relations.
- You will be mentored and supervised by highly skilled and recognised academics with vast experience in the industry.

ENTRY REQUIREMENTS

- An Australian Qualifications Framework Level 7 Bachelor degree from an approved institution in either criminology, sociology, legal studies, psychology, humanities / arts or business studies.

COMBINED DEGREE OPTION

- Master of Communication / Master of Project Management (CRICOS 088315J)

(\$13,966 per semester)

Master of Communication (Professional)

5 semesters
(92 weeks)

13

Jan
May
Sep

6.5**

063308C

\$50,640

PROGRAM DESCRIPTION

- This program follows the same structure as the Master of Communication with an additional 20-week Work Integrated Learning component.
- You will be able to choose between either a work placement or research project for this component.

ENTRY REQUIREMENTS

- Completion of an Australian Qualifications Framework Level 7 Bachelor degree in either communication, education, humanities / arts, social sciences, law or business studies.

(\$10,128 per semester)

Graduate Certificate in Construction Practice

1 semester
(4 months)

4

Jan
May
Sep

6.5
(6.0)

093262G

\$20,880

PROGRAM DESCRIPTION

- Teaches students from varied backgrounds how to manage building projects - from physical execution to financial analysis and funding.
- Focuses on the organisation and management of project resources (people, process, products, energy, finance, space) to deliver building projects on time, within cost, and of the defined scope and quality.

ENTRY REQUIREMENTS

- An Australian Qualifications Framework Level 7 Bachelor degree from an approved institution or qualification and / or relevant professional experience deemed equivalent by the Dean.

Graduate Diploma in Construction Practice

3 semesters
(1 year)

8

Jan
May
Sep

6.5
(6.0)

093263G

\$41,760

PROGRAM DESCRIPTION

- Teaches students from varied backgrounds how to manage building projects - from physical execution to financial analysis and funding.
- Focuses on the organisation and management of project resources (people, process, products, energy, finance, space) to deliver building projects on time, within cost, and of the defined scope and quality.

ENTRY REQUIREMENTS

- Completion of an Australian Qualifications Framework Level 7 Bachelor degree at an approved institution.

(\$13,920 per semester)

Master of Construction Practice

4 semesters
(1 year, 4 months)

12

Jan
May
Sep

6.5
(6.0)

071288B

\$62,590

PROGRAM DESCRIPTION

- This program covers a comprehensive range of subjects in the field of construction practice, focusing on the management and delivery of complex construction projects.
- Contains a strong sustainability theme which equips you with distinctive skills that are highly sought after in the built environment industry.

ENTRY REQUIREMENTS

- An Australian Qualifications Framework Level 7 Bachelor degree from an approved institution or qualification and / or relevant professional experience deemed equivalent by the Dean.

(\$15,647 per semester)

Master of Construction Practice (Professional)

5 semesters
(92 weeks)

15

Jan
May
Sep

6.5
(6.0)

071289A

\$67,810

(\$13,562 per semester)

As one of the largest economic sectors, the construction industry seeks graduates with distinctive skills, knowledge and practical experience across a variety of fields. The Master of Construction Practice (Professional) at Bond equips graduates with the necessary knowledge in management and skills to deliver complex construction projects. Graduates will gain a professionally recognised qualification and in turn, enhance their career potential in the field of construction practice. The Master of Construction Practice (Professional) is professionally recognised by some of Australia's leading professional bodies.

PROGRAM DESCRIPTION

- This program covers a comprehensive range of subjects in the field of construction practice, focusing on the management and delivery of complex construction projects.
- Contains a strong sustainability theme which equips you with distinctive skills that are highly sought after in the built environment industry.
- Professional Portfolio is a 20-week, 45 credit point subject available to Master's (Professional) students in the Faculty of Society & Design. This subject is strongly experientially oriented and encourages students to develop their professional skills in a real world environment.

ENTRY REQUIREMENTS

- An Australian Qualifications Framework Level 7 Bachelor degree from an approved institution or qualification and / or relevant professional experience deemed equivalent by the Dean.

PROFESSIONAL OUTCOMES

- Opportunities include building and construction management, contract administration, site management, facilities management, building services, quantity surveying, property development, project management, cost management and general management.
- Graduates of this degree are internationally recognised by the Royal Institution of Chartered Surveyors (RICS) as well as the Chartered Institute of Building (CIOB).



Gain professional recognition by some of Australia's leading professional bodies.



Learn via intensive mode delivery.



Learn in the University's Sustainable Development Building Precinct promoting sustainable practices of tomorrow.

*Fees per semester are based on an average calculation and may differ depending on the subjects and majors you take in a particular semester.

For more information on current fees, visit bond.edu.au/fees. Fees are not inclusive of additional costs such as Student Activities Membership, accommodation, textbooks and living costs.

**IELTS score 6.5 (Writing 6.5, Reading 6.0, Listening 6.0, Speaking 6.0)

Postgraduate Degrees		Duration	Subjects	Starting	IELTS	CRICOS	Fee*
Graduate Certificate in Criminology PROGRAM DESCRIPTION <ul style="list-style-type: none"> Provides you with an understanding of a broad range of criminological theories and practical applications. Will prepare you to undertake professional or skilled work, or as a pathway to more advanced areas of study. Prepares you to understand, evaluate and conduct research at a high level, understand knowledge acquisition and critical thinking, and will be exposed to theoretical concepts within criminology as well as performing evaluations of criminal behaviours through case studies. ENTRY REQUIREMENTS <ul style="list-style-type: none"> An Australian Qualifications Framework Level 7 Bachelor degree in a field cognate to the proposed degree. 		1 semester (4 months)	4	Jan May Sep	6.5**	083525F	\$12,080
Master of Criminology PROGRAM DESCRIPTION <ul style="list-style-type: none"> Provides an understanding of a broad range of issues involving criminal theories, contemporary information on crime prevention, the theory and practice of punishment, criminal offenders, the police, courts and correctional institutions, including current crime and deviance issues. You will be provided with knowledge, research skills and techniques required for the analysis of criminological issues and an understanding of how to critically evaluate published research. ENTRY REQUIREMENTS <ul style="list-style-type: none"> An undergraduate degree in criminology, sociology, legal studies, psychology, humanities or arts. Graduates from other disciplines may be considered. 		3 semesters (1 year)	12	Jan May Sep	6.5**	078659A	\$41,900 (\$13,966 per semester)
Master of Criminology (Professional) <div> <div> Criminology is fast becoming a vital discipline in Australia. A career in Criminology explores the motives behind criminal behaviour and analyses the criminal justice system. A Master of Criminology prepares graduates for a career in the industry. Graduates are given the skills and training necessary to understand crime, justice and forensic issues. </div> <div> PROGRAM DESCRIPTION <ul style="list-style-type: none"> Provides an understanding of a broad range of issues involving criminal theories, contemporary information on crime prevention, the theory and practice of punishment, criminal offenders, the police, courts and correctional institutions, including current crime and deviance issues. Professional Portfolio is a 20-week, 45 credit point subject available to Master's (Professional) students in the Faculty of Society & Design. This subject is strongly experientially oriented and encourages students to develop their professional skills in a real world environment. </div> <div> ENTRY REQUIREMENTS <ul style="list-style-type: none"> An undergraduate degree in criminology, sociology, legal studies, psychology, humanities or arts. Graduates from other disciplines may be considered. </div> <div> PROFESSIONAL OUTCOMES <ul style="list-style-type: none"> Enables those with an existing knowledge or early career in Criminology to develop research skills as they relate to various areas of criminological enquiry, and communicate the results of any research findings to both technical and nontechnical audiences. Equips graduates with the critical thinking skills and strategic development required to expand their criminology careers. </div> </div>		5 semesters (92 weeks)	13	Jan May Sep	6.5**	063307D	\$50,640 (\$10,128 per semester)
Master of International Relations PROGRAM DESCRIPTION <ul style="list-style-type: none"> An innovative, forward-looking program that is attuned to the dynamics of the globalising world and its multiple diplomatic channels. You will gain a solid grounding in contemporary, theoretical and cultural issues. ENTRY REQUIREMENTS <ul style="list-style-type: none"> An undergraduate degree in international relations, political science, political studies, global studies or humanities / arts. Graduates from other disciplines may be considered. COMBINED DEGREE OPTION <ul style="list-style-type: none"> Master of International Relations / Master of Project Management (CRICOS 088317G) 		3 semesters (1 year)	12	Jan May Sep	6.5**	078661G	\$41,900 (\$13,966 per semester)
Master of International Relations (Professional) PROGRAM DESCRIPTION <ul style="list-style-type: none"> This program follows the same structure as the Master of International Relations with an additional 20-week Work Integrated Learning component. ENTRY REQUIREMENTS <ul style="list-style-type: none"> Completion of an Australian Qualifications Framework Level 7 Bachelor degree from an approved institution in either international relations, political science, political studies, global studies, humanities / arts, law or business studies. 		5 semesters (92 weeks)	13	Jan May Sep	6.5**	063306E	\$50,640 (\$10,128 per semester)
Master of Project Management PROGRAM DESCRIPTION <ul style="list-style-type: none"> Provides a comprehensive business-ready foundation that will equip students from any background with the knowledge required to develop a career and expertise in project management. Features four distinct study themes including strategy, sustainability, managing complex problems and teams, and virtual teams and global working. External speakers from leading investment banks, credit agencies and portfolio fund managers contribute to case studies and workshops. ENTRY REQUIREMENTS <ul style="list-style-type: none"> Completion of an Australian Qualifications Framework Level 7 Bachelor degree at an approved institution. COMBINED DEGREE OPTION <ul style="list-style-type: none"> Master of Architecture / Master of Project Management (CRICOS 087931D) Master of Business Administration / Master of Project Management (CRICOS 085563F) Master of Communication / Master of Project Management (CRICOS 088315J) Master of Construction Practice / Master of Project Management (CRICOS 086028K) Master of Criminology / Master of Project Management (CRICOS 088316G) Master of International Relations / Master of Project Management (CRICOS 088317G) Master of Sport Management / Master of Project Management (CRICOS 085565D) Master of Sustainable Environments and Planning / Master of Project Management (CRICOS 086027M) Master of Valuation and Property Development / Master of Project Management (CRICOS 085564E) 		4 semesters (1 year, 4 months)	11	Jan May Sep	6.5 (6.0)	078813G	\$51,660 (\$12,915 per semester)

*Fees per semester are based on an average calculation and may differ depending on the subjects and majors you take in a particular semester.

For more information on current fees, visit bond.edu.au/fees. Fees are not inclusive of additional costs such as Student Activities Membership, accommodation, textbooks and living costs.

**IELTS score 6.5 (Writing 6.5, Reading 6.0, Listening 6.0, Speaking 6.0)

Postgraduate Degrees

Duration	Subjects	Starting	IELTS	CRICOS	Fee*
----------	----------	----------	-------	--------	------

Master of Project Management (Professional)

5 semesters (92 weeks)	12	Jan May Sep	6.5 (6.0)	078182M	\$56,830 (\$11,366 per semester)
------------------------	----	-------------	-----------	---------	----------------------------------

A booming economy demands more project managers. As the number of projects increase, employers seek graduates with skills in communication, leadership, team management, negotiation, and risk management. Graduates must be able to apply these skills to an agile and flexible industry.

The Master of Project Management (Professional) equips graduates with knowledge in an array of areas, including sustainable practices, strategy, and market performance.

PROGRAM DESCRIPTION

- Follows the same structure as the Master of Project Management with an additional 20-week Professional Portfolio component.
- Professional Portfolio is a 45 credit point subject available to Master's (Professional) students in the Faculty of Society & Design. This subject is strongly experientially orientated and encourages you to develop your professional skills in a real world environment.

ENTRY REQUIREMENTS

- Completion of an Australian Qualifications Framework Level 7 Bachelor degree at an approved institution.

PROFESSIONAL OUTCOMES

This degree will provide you with the ability to progress into a wide range of careers related to:

- Architecture
- Construction
- Facilities management
- IT
- Property
- Skills applicable to civil engineering sector
- Skills applicable to mining sector



Graduates of this degree are internationally recognised by the Royal Institution of Chartered Surveyors (RICS) and the Project Management Institute (PMI). They are also nationally accredited by the Australian Institute of Project Management.

Graduate Diploma of Psychological Science

2 semesters (8 months)	8	Jan May Sep	7.0 (6.5)	063195G	\$35,420 (\$17,710 per semester)
------------------------	---	-------------	-----------	---------	----------------------------------

PROGRAM DESCRIPTION

- You will undertake advanced training in a range of methodological (research methods, psychometrics, statistics) and applied areas, and develop competence in conducting research.
- On completion of this course, you may apply for provisional registration as a psychologist providing you enrol in further postgraduate studies or undertake two years' supervised training.

ENTRY REQUIREMENTS

- Completion of an accredited three-year sequence of study in psychology in Australia, or equivalent.
- Assessed on academic merit and must have achieved a minimum GPA of 2.0 / 4.0 on the Bond University four-point scale for all second and third level psychology subjects in their undergraduate studies.

RECOMMENDED STUDY PATHWAYS

The recommended pathways to becoming a registered Clinical Psychologist are:

- Bachelor of Psychological Science > Bachelor of Psychological Science (Honours) > Master of Psychology (Clinical)
- Bachelor of Psychological Science > Graduate Diploma of Psychological Science > Master of Psychology (Clinical)

Master of Psychology (Clinical)

6 semesters (2 years)	16	May	7.0 (7.0)	063429E	\$82,800 (\$13,800 per semester)
-----------------------	----	-----	-----------	---------	----------------------------------

PROGRAM DESCRIPTION

- Provides advanced education in the professional practice of psychology.
- Training is based on a scientist-practitioner model and is designed to prepare you with the knowledge and applied skills required by a registered practising psychologist in the area of clinical psychology.
- The program integrates coursework, research and practical placement experience.
- You will complete a series of placement experiences under the supervision of highly qualified and experienced supervisors, and apply best practice models to a professional standard.
- Upon graduation, you will be eligible to apply for full registration as a Psychologist, full membership of the APS, and associate membership of the APS College of Clinical Psychologists.

ENTRY REQUIREMENTS

- Students who have obtained their qualifications outside Australia must have their qualifications assessed prior to applying for this program and prior to applying for registration with the Psychology Board of Australia. The Australian Psychological Society (APS) provides this assessment service for the Board and the assessment assists the Board in determining if the student's qualifications are equivalent to an 'approved qualification'. However, it is important to note the final decision on equivalence rests with the Board. For more information on equivalency assessments please visit the Australian Psychological Society's website.

Graduate Certificate of Sustainable Environments and Planning

1 semester (4 months)	4	Jan May Sep	6.5 (6.0)	079534F	\$20,680
-----------------------	---	-------------	-----------	---------	----------

PROGRAM DESCRIPTION

- Provides you an opportunity to study in the areas of Environmental Management and / or Urban Design and Planning. Both areas are increasing urbanisation and significant environmental challenges.
- Gain the professional skills required for work in a variety of natural and built environment fields involving creating sustainable environments.

ENTRY REQUIREMENTS

- An Australian Qualifications Framework Level 7 Bachelor degree at an approved institution.

Graduate Diploma of Sustainable Environments and Planning

2 semesters (8 months)	8	Jan May Sep	6.5 (6.0)	079535E	\$41,460 (\$20,730 per semester)
------------------------	---	-------------	-----------	---------	----------------------------------

PROGRAM DESCRIPTION

- Provides you an opportunity to study in the areas of Environmental Management and / or Urban Design and Planning. Both areas are increasing urbanisation and significant environmental challenges.
- You can use this qualification to articulate into Master's studies within the same discipline in order to gain professional recognition in urban and regional planning.
- If you have a prior Built Environment background, you will be able to undertake Urban Planning and Development at a professional level.

ENTRY REQUIREMENTS

- An Australian Qualifications Framework Level 7 Bachelor degree at an approved institution.

*Fees per semester are based on an average calculation and may differ depending on the subjects and majors you take in a particular semester.

For more information on current fees, visit bond.edu.au/fees. Fees are not inclusive of additional costs such as Student Activities Membership, accommodation, textbooks and living costs.

**IELTS score 6.5 (Writing 6.5, Reading 6.0, Listening 6.0, Speaking 6.0)

Postgraduate Degrees	Duration	Subjects	Starting	IELTS	CRICOS	Fee*
Master of Sustainable Environments and Planning PROGRAM DESCRIPTION <ul style="list-style-type: none"> Provides two specialisations: Environmental Management or Urban Design and Planning. The Environmental Management specialisation provides an in-depth examination of environmental management, including field work. The Urban Design and Planning curriculum equips you with the theoretical and practical skills required to undertake the design, appraisal and management of urban and regional developments. ENTRY REQUIREMENTS <ul style="list-style-type: none"> An Australian Qualifications Framework Level 7 Bachelor degree at an approved institution. COMBINED DEGREE OPTION <ul style="list-style-type: none"> Master of Sustainable Environments and Planning / Master of Project Management (CRICOS 086027M) 	4 semesters (1 year, 4 months)	12	Jan May Sep	6.5 (6.0)	079538B	\$62,140 (\$15,535 per semester)
Master of Sustainable Environments and Planning (Professional) PROGRAM DESCRIPTION <ul style="list-style-type: none"> This program follows the same structure as the Master of Sustainable Environments and Planning with an additional 20-week Work Integrated Learning component. ENTRY REQUIREMENTS <ul style="list-style-type: none"> An Australian Qualifications Framework Level 7 Bachelor degree at an approved institution. 	5 semesters (92 weeks)	13	Jan May Sep	6.5 (6.0)	080639J	\$67,310 (\$13,462 per semester)
Graduate Certificate of Valuation and Property Development PROGRAM DESCRIPTION <ul style="list-style-type: none"> Designed to prepare students with a knowledge base and technical skills for careers within property related industries and professions. Attributes gained from this certificate will allow you to work in the valuation and property development sector in Australia and around the world. ENTRY REQUIREMENTS <ul style="list-style-type: none"> An Australian Qualifications Framework Level 7 Bachelor degree from an approved institution or qualifications and / or relevant professional experience deemed equivalent by the Dean. 	1 semester (4 months)	4	Jan May Sep	6.5 (6.0)	085558C	\$20,780
Graduate Diploma of Valuation and Property Development PROGRAM DESCRIPTION <ul style="list-style-type: none"> Designed to prepare students with a knowledge base and technical skills for careers within property related industries and professions. The application of the knowledge and skills developed in the program will allow graduates to demonstrate autonomy, expert judgement, adaptability and responsibility as a practitioner across a range of career paths in property related fields such as investment, finance, property management and property research. ENTRY REQUIREMENTS <ul style="list-style-type: none"> An Australian Qualifications Framework Level 7 Bachelor degree at an approved institution. 	2 semesters (8 months)	8	Jan May Sep	6.5 (6.0)	085560J	\$41,560 (\$20,780 per semester)
Master of Valuation and Property Development PROGRAM DESCRIPTION <ul style="list-style-type: none"> Designed to equip you with strong knowledge and advanced technical skills applicable to a variety of career paths such as investment, finance, asset management and research. ENTRY REQUIREMENTS <ul style="list-style-type: none"> An Australian Qualifications Framework Level 7 Bachelor degree at an approved institution. SPECIALISATION <ul style="list-style-type: none"> You may use the four electives to specialise in Property Valuation. Completion of these subjects will result in recognition by the Australian Property Institute (API). Alternatively, you can complete all 12 foundation subjects plus select four electives available from the Faculty. COMBINED DEGREE OPTION <ul style="list-style-type: none"> Master of Valuation and Property Development / Master of Project Management (CRICOS 085564E) 	4 semesters (1 year, 4 months)	12	Jan May Sep	6.5 (6.0)	085561G	\$62,240 (\$15,560 per semester)
Master of Valuation and Property Development (Professional) PROGRAM DESCRIPTION <ul style="list-style-type: none"> This program follows the same structure as the Master of Valuation and Property Development with an additional 20-week Work Integrated Learning component. ENTRY REQUIREMENTS <ul style="list-style-type: none"> An Australian Qualifications Framework Level 7 Bachelor degree at an approved institution. 	5 semesters (92 weeks)	17	Jan May Sep	6.5 (6.0)	085562G	\$67,410 (\$13,482 per semester)

*Fees per semester are based on an average calculation and may differ depending on the subjects and majors you take in a particular semester.

For more information on current fees, visit bond.edu.au/fees. Fees are not inclusive of additional costs such as Student Activities Membership, accommodation, textbooks and living costs.

**IELTS score 6.5 (Writing 6.5, Reading 6.0, Listening 6.0, Speaking 6.0)

Faculty of Health Sciences & Medicine



5 STAR RATINGS

In 2018, Bond's Health Sciences and Medicine was rated 5 Stars for Education Experience by the Good Universities Guide.



BOND VIRTUAL HOSPITAL

Replicating a hospital ward, the Bond Virtual Hospital is the first of its kind and offers clinical teaching sessions with simulated patients, allowing students to learn vital skills in a real life setting.



RESEARCH INTENSIVE

The Faculty houses the Clem Jones Research Centre for Regenerative Medicine, the Centre for Urology Research and the Clinical Education and Research Centre (a collaboration with Queensland Health).



CLINICAL SKILLS ROOMS

Bond University has state-of-the-art clinical skills rooms with purpose-built clinical facilities that reflect what is currently being used in clinical practice. They provide practical experience for students studying medicine, nutrition and dietetics, and physiotherapy programs. The largest clinical skills room is designed to simulate a hospital setting where students learn by computerised simulation, through patient actors and human patient simulators (fully interactive mannequins).



TEACHING AND RESEARCH LABORATORIES

Bond University has 13 teaching laboratories, including the multimedia labs with 25 computers per room. The laboratory facilities are well equipped for studying diverse areas of science, including pharmacology, physiology, chemistry, microbiology, molecular biology and genetics. Teaching labs are open and available to students 24 hours per day, even outside of class hours. The Faculty of Health Sciences & Medicine also houses research units such as the Clem Jones Research Centre for Regenerative Medicine, the Centre for Urology Research and the Clinical Education Research Centre - a collaboration with Queensland Health.



INTERNATIONAL CLINICAL PLACEMENTS

Bond University Medical, Physiotherapy, and Nutrition and Dietetics students get the opportunity to take overseas placements as part of their program in countries such as the Solomon Islands, Vietnam, Malaysia, Hong Kong, South Africa, India, USA, Sweden and New Zealand. The picture above is of our Solomon Islands medical experience.



BOND INSTITUTE OF HEALTH & SPORT

The Bond Institute of Health & Sport is located just 4km away from the main Bond University campus, and houses students studying in Occupational Therapy, Nutrition and Dietetics, Sport and Exercise Science, and Physiotherapy programs. The Institute boasts a high performance gym, health and sport science laboratories, pool and temperature contrast pools, altitude room, clinical skills rooms, and dedicated Occupational Therapy and Physiotherapy teaching spaces. Conference and meeting facilities, a multimedia study centre and on-site cafe are also in the building.

INDUSTRY LINKS

Bond students have gained experience from organisations such as:

- | | | | |
|---------------------------------|--------------------------------------|---------------------------------------|---|
| • World Surf League | • Baseball Queensland | • Queensland Medical Laboratory (QML) | • Gold Coast Private Hospital |
| • Australian Football League | • Gold Coast City Council | • Queensland Cardiology Group | • Gold Coast Primary Health Network (GCPHN) |
| • Australian Institute of Sport | • Gold Coast Hospital | • Sullivan Nicolaides Pathology | • John Flynn Private Hospital |
| • Australian Olympic Committee | • International Rugby Board | • Robina Hospital | • Lismore Base Hospital |
| • Australian Rugby Union | • Momentum Sports Performance Centre | • Gold Coast Hospital Health Service | • Roma Hospital |
| • Australian Sports Commission | • Netball Queensland | • Wesley Private Hospital | • Breast Screen Queensland |
| • Australian University Games | • Pathology Queensland | • Pindara Hospital | • The Tweed Hospital |
| | • Queensland Academy of Sport | | |

Undergraduate Degrees

Duration	Subjects	Starting	IELTS	CRICOS	Fee*
----------	----------	----------	-------	--------	------

Bachelor of Biomedical Science

6 semesters (2 years)	24	Jan May	6.5 (6.0)	063085B	\$114,480 (\$19,080 per semester)
-----------------------	----	---------	-----------	---------	-----------------------------------

In an ever changing world, the development of science and new technologies is a certainty. Scientists of the future need to be innovative, creative and passionate about all things Health and Science. The Bachelor of Biomedical Science provides you with the ideal undergraduate foundation for a career in the health sciences.

PROGRAM DESCRIPTION

- Develop your knowledge in molecular, cellular, anatomical and physiological processes of the human body.
- Extensive laboratory training is provided from your first semester.

MAJORS

- Laboratory / Research
- Pre-Health Professional

PROFESSIONAL OUTCOMES

- Work in a range of fields, including health promotion, laboratory assistance, medical equipment, or use the degree as a pathway into other health professions.
- Successful completion of this program can be used as a pathway into the Doctor of Physiotherapy*, Master of Nutrition and Dietetic Practice*, Master of Occupational Therapy and the Medical Program*.
- Prepare for graduate entry into further study in medicine and allied health. Visit bond.edu.au/medicine for information on using this degree as a pathway into Bond's Medical Program*.

*Subject prerequisites.

COMBINED DEGREE OPTIONS

- Bachelor of Biomedical Science / Bachelor of Laws (CRICOS 093911B)



Ability to learn using the latest virtual reality and augmented reality programs, developed by your own teachers.



A broad science degree with pathways into a number of internationally recognised areas including Medicine, Physiotherapy, Nutrition and Dietetics and Occupational Therapy.

Bachelor of Exercise and Sports Science

6 semesters (2 years)	24	Jan	6.5 (6.0)	080641D	\$114,480 (\$19,080 per semester)
-----------------------	----	-----	-----------	---------	-----------------------------------

- Gain knowledge and skills in health, fitness and athletic performance; and basic applied sciences like anatomy, physiology, biomechanics, exercise physiology, motor learning and control, exercise and sport psychology, and exercise prescription and planning.
- Successful completion of this degree allows graduates a pathway into Bond's postgraduate Physiotherapy, Occupational Therapy and Nutrition degrees.

Diploma of Health Sciences

2 semesters (8 months)	8	Jan Sep	6.0 (5.5)	093260K	\$29,440 (\$14,720 per semester)
------------------------	---	---------	-----------	---------	----------------------------------

- Gain an understanding of basic and applied sciences; and anatomical, molecular and physiological processes of human and health function.
- This program can be used as a pathway to several Bond programs, with successful completion guaranteeing entry into the Bond Bachelor of Health Sciences with 8 subjects of credit.

Bachelor of Health Sciences

6 semesters (2 years)	24	Jan May Sep	6.5 (6.0)	063068C	\$114,480 (\$19,080 per semester)
-----------------------	----	-------------	-----------	---------	-----------------------------------

- Explore a variety of health disciplines by gaining an understanding of basic and applied sciences.
- Flexible degree, allowing students to select a variety of subjects to best suit individual career and study goals.
- Honours is available after successful completion of this program with a GPA of 2.0 / 4.0 or higher.

Medical Program^

14 semesters (4 years, 8 months)		May	7.0 (6.5)	BMedSt: 087932C MD: 087933B	\$391,440 (\$27,960 per semester)
----------------------------------	--	-----	-----------	--------------------------------	-----------------------------------

PROGRAM DESCRIPTION

- Made up of two sequential degrees: The Bachelor of Medical Studies (BMedSt) and Doctor of Medicine (MD) - all students selected for entry into the Medical Program^ must complete both degrees to be eligible for registration as a medical practitioner in any state or territory of Australia or New Zealand.
- You will benefit from a variety of teaching and learning systems, including case-based small group tutorials, problem-based learning, practical classes, clinical skills and laboratory training, self-directed learning, web-based and e-learning, interactive seminars and lectures.
- Direct entry into the Medical Program^ is currently not available to international students.

ENTRY REQUIREMENTS

- International students can pathway into the second year of the Medical Program^ through the successful completion of Bond's Bachelor of Biomedical Science (Pre-Health Professional major), Master of Occupational Therapy, Doctor of Physiotherapy or Master of Nutrition and Dietetic Practice meeting minimum required GPA.
- Please visit bond.edu.au/intl/program/medical-program/medical-program-entry-requirements for detailed entry requirements.

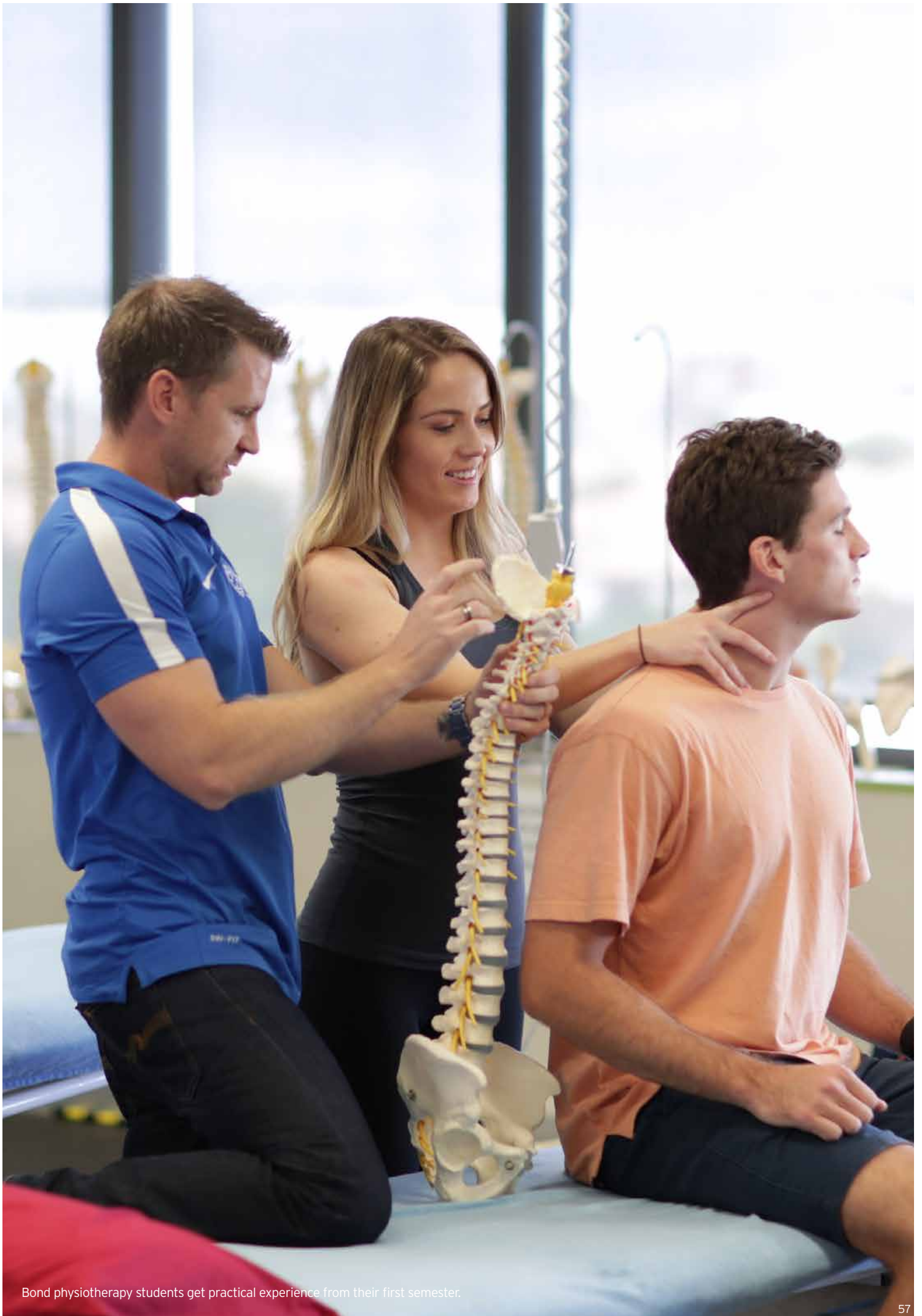


Students in the Faculty of Health Sciences & Medicine have access to state-of-the-art facilities and technology, including AR and VR programs.

*Fees per semester are based on an average calculation and may differ depending on the subjects and majors you take in a particular semester.

For more information on current fees, visit bond.edu.au/fees. Fees are not inclusive of additional costs such as Student Activities Membership, accommodation, textbooks and living costs.

^Medical Program is comprised of two sequential degrees - the Bachelor of Medical Studies (BMedSt) and the Doctor of Medicine (MD). All students selected for entry into the Medical Program will have to complete both the BMedSt and MD to be eligible for registration as a medical practitioner in any state or territory in Australia or New Zealand.



Bond physiotherapy students get practical experience from their first semester.

Postgraduate Degrees

Graduate Certificate in Nutrition

1 semester
(4 months) 4 May 7.0
(6.5) 079257M \$16,080

PROGRAM DESCRIPTION

- This program builds on undergraduate studies in the health and related sciences to develop specialist knowledge, skills and attitudes relating to human nutrition and health.
- Successful completion of this program can lead to studies in Bond's Master of Nutrition and Dietetic Practice to become qualified as a dietitian.

Graduate Diploma in Nutrition

2 semesters
(8 months) 8 May 7.0
(6.5) 079258K \$32,160
(\$16,080 per semester)

PROGRAM DESCRIPTION

- This program builds on undergraduate studies in the health and related sciences to develop specialist knowledge, skills and attitudes relating to human nutrition and health.
- Builds on the Graduate Certificate in Nutrition by including subjects in Clinical Dietetics, Food Service Dietetics, Nutrition and Chronic Disease Management, and Public Health Nutrition Practice.

Master of Nutrition and Dietetic Practice

6 semesters
(2 years) 20 May 7.0
(6.5) 089734D \$96,480
(\$16,080 per semester)

Interested in clinical dietetics, private practice, food service management, public health nutrition, sports nutrition and nutrition research? Then the Master of Nutrition and Dietetics is for you. This program allows students interested in health and nutrition to choose their own pathway and area of nutrition they want to specialise in, while focusing on practical placement, communication and international engagement.

PROGRAM DESCRIPTION

- Strong emphasis is placed on developing evidence-based practitioners that have intensive preparation in evidence-based dietetic practice, nutrition research and international engagement.
- You will have the opportunity to participate in an international placement as part of the program.

PROFESSIONAL OUTCOMES

- Clinical dietetics
- Private practice
- Food service management
- Public health nutrition
- Corporate health and wellness programs
- Sports nutrition
- The food industry
- Nutrition in child care centres, schools and aged care facilities
- Research

ENTRY REQUIREMENTS

- An undergraduate degree in health science or other related degree with at least two biochemistry subjects at second year level where first year chemistry is a prerequisite of these subjects, and two physiology subjects also at second year level.
- Eligible undergraduate programs from Bond University include:
 - Bachelor of Biomedical Science (CRICOS 063085B)
 - Bachelor of Exercise and Sports Science (CRICOS 080641D)
 - Bachelor of Health Sciences (CRICOS 063068C)



Graduates of this program can apply for accredited practising dietitian (APD) status within the Dietitians Association of Australia.

Master of Occupational Therapy

6 semesters
(2 years) 23 May
Sep 7.0
(7.0) 090670E \$123,940
(\$20,656 per semester)

Occupational therapy (OT) is a dynamic and diverse profession, enabling people and communities to overcome barriers imposed by illness, injury, disability, psychological impairment, developmental delay or the aging and dying process.

Bond University's Master of Occupational Therapy is the first in Australia to offer you the opportunity to complete a clinical research project or undertake business electives.

OTs are in high demand in hospitals, mental health, aged care, disability and rehabilitation environments. The demand for OTs will rise significantly with the introduction of the National Disability Scheme in Australia (NDIS).

PROGRAM DESCRIPTION

- Designed to produce highly competitive graduates with comprehensive clinical skills, and solid business acumen and research experience.
- Taught in world-class facilities at the Bond Institute of Health and Sport.
- Choose between the Clinically-focused Research Pathway or the Business-focused Research Pathway.
- Culminates in an individual research project that may be eligible for publication. Prepares you for entry into Higher Degree Research, and careers in research and academia, as well as bolstering research networks.
- Business-focused Research Pathway: Enables you to undertake business electives to prepare you for management roles, and better prepare you to work in the private sector.

PROFESSIONAL OUTCOMES

- Aged care
- Community health centres
- Independent living centres and rehabilitation facilities
- Mental health services
- Paediatrics
- Private practice
- Public and private hospitals
- Research
- Schools and tertiary education
- Workplace health

ENTRY REQUIREMENTS

- A degree in health sciences or other related degree with a minimum GPA of 1.0 / 4.0 (equivalent 4.0 / 7.0) and the equivalent of at least one semester of anatomy, one semester of physiology, and two semesters of psychology or sociology or behavioural science.
- Applications should include accompanying documentation, including academic transcript and subject outlines.
- Applicants who do not meet the prerequisite subject requirements may need to complete bridging subjects prior to entry.



Australia's first OT Masters to offer the opportunity to complete a clinical research project or undertake business electives in preparation for a career in private practice.



Develop specialist skills related to the practice of OT, with 1,000 hours of practical education across various clinical contexts in a variety of settings.

Master of Science by Research (Health Sciences)

6 semesters
(2 years) Jan
May
Sep 7.0
(6.5) 073729K \$37,110 per annum

PROGRAM DESCRIPTION

- Undertake supervised research studies in one or more of the Faculty of Health Science & Medicine's research areas and groups.
- This is an internationally recognised research degree, and can be used as a pathway to PhD studies.

ENTRY REQUIREMENTS

- An undergraduate degree with honours in a relevant discipline, with evidence of the ability to conduct supervised research; or
- A qualification or combination of qualifications deemed to be equivalent by the Faculty Research Committee.

*Fees per semester are based on an average calculation and may differ depending on the subjects and majors you take in a particular semester.

For more information on current fees, visit bond.edu.au/fees. Fees are not inclusive of additional costs such as Student Activities Membership, accommodation, textbooks and living costs.

**IELTS score 6.5 (Writing 6.5, Reading 6.0, Listening 6.0, Speaking 6.0)

6
semesters
(2 years)

20

May
7.0
(7.0)

075478G

\$133,920
(\$22,320
per
semester)

Doctor of Physiotherapy

Are you ready to take your career in physiotherapy to the next level? The highly regarded Doctor of Physiotherapy at Bond will provide you with over 1,200 hours of clinical placement to broaden your knowledge and skill level, ready for the next step in your career.

PROGRAM DESCRIPTION

- Prepares entry-level physiotherapists for their roles and responsibilities as first contact practitioners.
- Integrates clinical, pathological and related sciences with the physiotherapy knowledge, skills and professional behaviours and attitudes required to examine, diagnose and treat physiotherapy clients.

PROFESSIONAL OUTCOMES

- Orthopaedics
- Cardio-respiratory practice
- Out-patient musculoskeletal practice
- Hospital practice
- Private practice
- Neurological and ortho-geriatric rehabilitation
- Chronic disease and disability
- Paediatrics
- Women's and men's health
- Sports practice
- Community physiotherapy

ENTRY REQUIREMENTS

- A Bachelor of Exercise and Sports Science degree from Bond University, or equivalent degree from a recognised institution with a cumulative GPA 2.0 / 4.0 or 5.0 / 7.0 or better.
- Evidence of the following tertiary subject prerequisites:
 - Two semesters of human anatomy
 - Two semesters of human physiology
 - One semester of biomechanics
 - One semester of research design / statistics
 - One semester of physiology of exercise
 - One semester of exercise prescription
- Successful performance at a selection interview.



Up to 50% of the program is undertaken in a clinical context.



Upon graduation, you will be eligible for registration as a physiotherapist in Australia and in some countries internationally.



Taught in world-class facilities at the Bond Institute of Health and Sport.



The Bond Institute of Health & Sport (BIHS) is located 8 minutes away from the main Bond campus, and houses our allied health facilities.

Faculty of Law



WORLD-CLASS ACADEMICS

National and international legal experts in a variety of fields contribute to the delivery of programs at the cutting edge of contemporary legal scholarship and practice.



DISPUTE RESOLUTION CENTRE

The Faculty of Law's Dispute Resolution Centre (DRC) is recognised as a leader in mediation excellence. The Centre brings together some of the country's leading dispute resolution specialists whose training, teaching and research expertise places Bond at the forefront of current industry theory and practice.



LEGAL SKILLS PROGRAM

Bond's innovative Integrated Skills and Professionalism Program ensures graduates have professional capabilities including legal ethics, professionalism research, reasoning, writing and drafting.



One of Bond University's Moot Courts



Law Library



Bond Law Clinics



Mooting accolades

MOOT COURTS

Bond's new showcase e-courtroom replicates the latest technology used in the courts of Australia. The courtroom is fully equipped with electronic evidence management systems, video conferencing facilities, wireless networking and video streaming. An additional medium-sized court and two smaller moot courts are available for practice, preparation and presentations, and are also equipped with the latest courtroom and teaching technologies to support students throughout their studies.

BOND LAW CLINICS

Bond students can gain practical work experience through the following clinics at Bond:

- Commercial Law Clinic (on campus)
- Community Law Clinic
- Criminal Law Clinic
- Human Rights Clinic
- Immigration Law Clinic (on campus)
- Start Up Law Clinic

MOOT COMPETITIONS

From as early as your first semester of study, you will have the opportunity to become involved in a wide variety of skills competitions including client advocacy. Students are supported financially by the Faculty to participate in competitions. Some of the competitions that Bond participates in include the Jessup, Vis East, ICC, and Kirby Contracts mooting competitions. Faculty-run competitions you can become involved in include*:

- Pro Justia Moot Competition
- Brian Orr Mooting Competition
- Wilson Moot Competition (Canada)
- CLSA Hockey Arbitration
- Witness Examination Competition
- Negotiation Competition
- Client Interview Competition
- Shark Tank with Kirby

*Competitions list may vary each year.

The #1 job title held by a Faculty of Law alumni is Lawyer, followed by Partner and Managing Director. Among the Top 10 employers are Clayton Utz, PwC, Minter Ellison, KPMG and Macquarie Group.

INDUSTRY RELATIONSHIPS

Bond University has dedicated staff who provide individual support to our students to find internships and later employment. We maintain industry relationships with leading organisations. These include:

- Ashurt
- Cronin Litigation Lawyers
- Wyndham Vacation Resorts, Asia Pacific Pty Ltd
- Clayton Utz
- Law Right

Undergraduate Degrees

Bachelor of Business Law

- This degree provides an opportunity to combine legal subjects of particular interest with study in related disciplines such as international business and management.
- You will gain an understanding of common law frameworks and international comparative law.
- Gain practical skills in negotiating, problem solving and oral communication in simulated professional environments.
- Please note that this degree does not qualify you for admission as a legal practitioner. If you wish to practise law, you must complete a Bachelor of Laws or Juris Doctor.

6 semesters (2 years)	24	Jan May Sep	7.0 (6.5)	063057F	\$114,480 (\$19,080 per semester)
-----------------------------	----	-------------------	--------------	---------	--

Bachelor of Jurisprudence

- This degree provides an opportunity to combine legal subjects of particular interest with study in related disciplines such as international relations, criminology, languages and communication.
- Learn practical skills in oral communication, negotiation and problem solving in a simulated professional environment.
- You will have access to state-of-the-art facilities including moot courts, skills and negotiation rooms.
- Please note that this degree does not qualify you for admission as a legal practitioner. If you wish to practise law, you must complete a Bachelor of Laws or Juris Doctor.

6 semesters (2 years)	24	Jan May Sep	7.0 (6.5)	063078A	\$114,480 (\$19,080 per semester)
-----------------------------	----	-------------------	--------------	---------	--

Diploma of Legal Studies

- This diploma provides students with a basic grounding in Australia's legal system, the principles of business law and contemporary legal issues confronting Australian society.
- This program can be used as a pathway for entry into several Bond programs, with successful completion guaranteeing entry into the Bachelor of Laws with 8 subjects of credit.

2 semesters (8 months)	8	Jan May Sep	6.0 (5.5)	080298C	\$29,440 (\$14,720 per semester)
------------------------------	---	-------------------	--------------	---------	---

Bachelor of Laws

8 semesters (2 years, 8 months)	32	Jan May Sep	7.0 (6.5)	093922K	\$152,640 (\$19,080 per semester)
--	----	-------------------	--------------	---------	--

The Bachelor of Laws (LLB) delivers a rigorous law curriculum that focuses on the academic development of students, providing an exceptional high quality learning experience characterised by a professional and practical emphasis. You will learn essential skills in a simulated legal environment with state-of-the-art facilities. You will also have the opportunity to gain experience in our Bond Law Clinics, which work with the profession and community on a pro-bono basis, or to compete internationally or domestically in one of our many pre-eminent moot teams.

PROGRAM DESCRIPTION

- The LLB is designed to equip you for a career in the legal profession, corporate sector or government sector, both within Australia and overseas.
- Bond's unique Integrated Skills and Professionalism Program is embedded in the LLB and focuses on core legal skills essential to the practice of law, such as legal writing and drafting; oral communication and advocacy; legal ethics and professionalism; legal research and reasoning; and dispute resolution and collaboration.
- The program combines small class sizes, excellent teaching and the Integrated Skills and Professionalism Program to provide an exciting and challenging learning experience that prepares you practically for a legal career.
- You will have the opportunity to gain practical experience in either a voluntary capacity or through a law clinic placement, giving you an advantage when entering legal practice.

PROFESSIONAL OUTCOMES

- The LLB prepares you to pursue careers in the public and private sectors, in positions such as solicitor, barrister, government lawyer, in-house counsel, or judge's associate.
- The Bachelor of Laws is an approved degree for the purposes of admission as a legal practitioner in all Australian jurisdictions, in conjunction with further study (Graduate Diploma in Legal Practice, please see page 63) or a traineeship.
- This degree may be used to apply for admission internationally.
- You are recommended to seek advice from the relevant admitting body in your relevant admitting body in your state / territory in Australia or your home country, to confirm requirements and / or additional study.

COMBINED PROGRAMS

- Bachelor of Actuarial Science / Bachelor of Laws (CRICOS 093910C)
- Bachelor of Arts / Bachelor of Laws (CRICOS 093912A)
- Bachelor of Biomedical Science / Bachelor of Laws (CRICOS 093911B)
- Bachelor of Business / Bachelor of Laws (CRICOS 093909G)
- Bachelor of Commerce / Bachelor of Laws (CRICOS 093908G)
- Bachelor of Communication / Bachelor of Laws (CRICOS 093915J)
- Bachelor of Communication (Business) / Bachelor of Laws (CRICOS 093914K)
- Bachelor of International Relations / Bachelor of Laws (CRICOS 093916G)
- Bachelor of Journalism / Bachelor of Laws (CRICOS 093918F)
- Bachelor of Psychological Science / Bachelor of Laws (CRICOS 093921M)



An outstanding Mooting Program and other opportunities to gain practical experience while studying.



The Bachelor of Laws is capped at 180 students per year, ensuring a personalised learning experience for all students.

JACKSON WALKDEN-BROWN

Assistant Professor
First Year Coordinator, Practising Entertainment Lawyer

"My favourite thing about Bond is the unwavering commitment of Bond academics to student-centeredness in both curriculum design and delivery. In particular, the Law Faculty's proactive teaching and research initiatives regarding the digital disruption of legal services are ensuring our graduating students feel genuinely ready to thrive in an increasingly complex world."



*Fees per semester are based on an average calculation and may differ depending on the subjects and majors you take in a particular semester. For more information on current fees, visit bond.edu.au/fees. Fees are not inclusive of additional costs such as Student Activities Membership, accommodation, textbooks and living costs.

Graduate Diploma in Legal Practice

2 semesters (8 months)	3	Jan May Sep	6.5 (6.0)	063183M	\$21,520 (\$10,760 per semester)
------------------------	---	-------------	-----------	---------	----------------------------------

Become work ready with the Faculty of Law's accredited Graduate Diploma in Legal Practice (GDLP). Taught by industry professionals, you'll learn essential skills and receive all the practical training needed to become a practising lawyer.

The GDLP program provides flexibility to study as students can choose to study either full-time (on-campus) or online with the option of full-time or part-time study. International student visa holders must study on campus on a full-time basis.

PROGRAM DESCRIPTION

- The Graduate Diploma in Legal Practice is the link between your law degree and becoming a practising lawyer.
- Includes 75 days of practical experience under the supervision of a practising lawyer.
- This program is made up of three components.
 - Practical Legal Training
 - Practical Experience
 - Continuing Practical Training
- Visit bond.edu.au/plt for more detail.

ENTRY REQUIREMENTS

- Bachelor of Laws or Juris Doctor qualification from an Australian institution or equivalent.
- It is recommended that you seek advice from the relevant admitting body in your relevant admitting body in your state / territory in Australia or your home country, to confirm requirements and / or additional study.

PROFESSIONAL OUTCOMES

- Successful completion of the GDLP program enables you to apply for admission to legal practice in Australia (except South Australia or Northern Territory).
- For those seeking to specialise, this program will provide you with a pathway and two subject credits into the Master of Laws (LLM). Specialise further in areas such as commercial law, dispute resolution, family dispute resolution or international law.

Graduate Diploma in Legal Practice (Online)

2 semesters (8 months)	3	Jan May Sep	6.5 (6.0)		\$10,210 (\$5,105 per semester)
------------------------	---	-------------	-----------	--	---------------------------------

PROGRAM DESCRIPTION

- The Graduate Diploma in Legal Practice is the link between your law degree and becoming a practising lawyer.
- Consists of three components: Practical Legal Training, Practical Experience and Continuing Practical Training.
- You can undertake the online program full-time or part-time.

ENTRY REQUIREMENTS

- Bachelor of Laws or Juris Doctor qualification from an Australian institution or equivalent.
- It is recommended that you seek advice from the relevant admitting body in your home country to confirm requirements and / or additional study.



The Law building houses the John F. Kearney Moot Court, space for Bond's community law clinics, an open-plan lounge and a student hub.

Postgraduate Degrees

Duration
Subjects
Starting
IELTS
CRICOS
Fee*

Doctor of Legal Science (Research)

12 semesters (4 years)
6
Jan May Sep
7.0 (6.5)
093848D
\$37,110 per annum

PROGRAM DESCRIPTION

- This is a Higher Degree by Research program awarded for a combination of coursework and a thesis that is a significant contribution to the knowledge and understanding of an aspect of law.
- Students will complete up to six electives chosen from the subjects listed under the Master of Laws, as well as a written thesis of between 50,000 – 80,000 words, depending on the number of coursework subjects undertaken.

ENTRY REQUIREMENTS

- A Master of Laws degree; or
- A Bachelor of Laws or Juris Doctor degree with an Honours average of at least 75%.
- An applicant may be required to satisfy the Dean that they have the appropriate level of research skills to undertake the qualification, which includes writing a thesis of between 50,000 – 80,000 words.
- Admission is on the basis of an approved research proposal and availability of appropriate supervision.

Juris Doctor

6 semesters (2 years)
24
Jan May Sep
6.5 (6.0)
093923J
\$116,600 (\$19,433 per semester)

The Juris Doctor cements your understanding of international legal issues, preparing you for the globalised legal profession. The Bond Juris Doctor is acknowledged as a legal qualification that provides students with a strong foundation in the law. A Juris Doctor allows graduates to practise in multiple jurisdictions, although students need to check Admission requirements in their home country.

Our graduates are working in top tier law firms throughout Australia, and in the USA, UK, Canada, Scandinavia, France, China and Malaysia.



An outstanding Mooting Program and other opportunities to gain practical experience while studying.



Features an innovative Integrated Skills and Professionalism Program to ensure practical job skills are integrated into all law subjects.

PROGRAM DESCRIPTION

- The Juris Doctor is a professional legal qualification which prepares you to become a legal professional in the corporate, government, community or not-for-profit sectors, both in Australia and overseas.
- You will have the opportunity to gain practical experience in our Bond Law Clinics, which work with the profession and community on a pro-bono basis.

ENTRY REQUIREMENTS

- Completion of an Australian Qualifications Framework Level 7 Bachelor degree from a recognised tertiary institution.
- It is recommended that you seek advice from the relevant admitting body in your state / territory or home country to confirm requirements and / or additional study.

PROFESSIONAL OUTCOMES

- The Juris Doctor is an approved degree for the purposes of admission as a legal practitioner in all Australian jurisdictions, in conjunction with further study (Graduate Diploma in Legal Practice) or a traineeship.
- The Juris Doctor may be used to apply for admission internationally.
- Prepares graduates for roles in the private and public sector, such as solicitors, barristers, government lawyers, in-house counsel, judge's associates, academics or business leaders.

Master of Laws (also available online)

2 semesters (8 months)
8
Jan May Sep
6.5 (6.0)
084235G
\$41,360 (\$20,680 per semester)

The Master of Laws (LLM) program offers law graduates the opportunity to undertake postgraduate legal education designed to suit their personal and professional circumstances. With a professional emphasis, and various specialisations in commercial law, international law and dispute resolution, the Bond LLM is designed to realise the educational and career aspirations of the global lawyer.

PROGRAM DESCRIPTION

- The Master of Laws (LLM) provides maximum flexibility and choice with a wide range of specialist areas.
- Study on-campus, online or a combination of both.
- For international students, the LLM provides a wide range of international law, comparative law, IP law, trade law and dispute resolution subjects to broaden and internationalise an undergraduate law qualification.

ENTRY REQUIREMENTS

- A professional law qualification (Bachelor of Laws, Juris Doctor, or equivalent).

SPECIALISATIONS

You will have the option to specialise in one of the disciplines in the below list:

- Canadian Law and Practice
- Corporate and Commercial Law and Practice
- Dispute Resolution
- Family Dispute Resolution
- International Business and Finance Law
- International Commercial Law and Dispute Resolution (Online)

PROFESSIONAL OUTCOMES

- The LLM provides a postgraduate qualification that broadens a graduate's knowledge in a chosen area of specialisation.

Master of Laws (by Research)

6 semesters (2 years)
Jan May Sep
7.0 (6.5)
063455C
\$37,110 per annum

PROGRAM DESCRIPTION

- For students from a legal degree background who wish to enhance their knowledge in specialist areas of law.
- A higher degree by research program awarded for completion of a 50,000 word thesis.

ENTRY REQUIREMENTS

- A professional law qualification (Bachelor of Laws, Juris Doctor, or equivalent).
- Bachelor of Laws or Juris Doctor with an average of at least 65%.

Master of Legal Administration

3 semesters (1 year)
12
Jan May Sep
6.5 (6.0)
084236G
\$60,480 (\$20,160 per semester)

PROGRAM DESCRIPTION

- The Master of Legal Administration offers students from a non-law background the opportunity to attain postgraduate qualifications in law.
- Students can choose a generalist degree or elect to specialise in a particular area of law, combined with up to four subjects from other disciplines.
- Please note that this degree does not qualify you for admission as a legal practitioner.

ENTRY REQUIREMENTS

- An undergraduate program in any discipline at an approved Australian institution or equivalent.

SPECIALISATIONS

- Canadian Law and Practice
- Corporate and Commercial Law and Practice
- Dispute Resolution
- International Business and Finance Law

*Fees per semester are based on an average calculation and may differ depending on the subjects and majors you take in a particular semester.

For more information on current fees, visit bond.edu.au/fees. Fees are not inclusive of additional costs such as Student Activities Membership, accommodation, textbooks and living costs.

Higher Degree Research

HDR	Duration	Starting	IELTS	CRICOS	Fee*
Doctor of Philosophy (PhD) PROGRAM DESCRIPTION <ul style="list-style-type: none"> Depending on the field of specialisation, the PhD culminates in an 80,000-word thesis of significant, original research. The PhD is an internationally recognised degree usually used as a pathway to an academic or research career. ENTRY REQUIREMENTS <ul style="list-style-type: none"> A four-year (8 semester) honours degree - First Class or 2A; or A research master's degree; or A qualification or combination of qualifications deemed to be equivalent to the above by the Higher Degrees by Research Committee. RESEARCH AREAS <ul style="list-style-type: none"> Actuarial Science Architecture and Built Environment Business and Commerce Communication and Creative Media Foundation Programs Health Sciences Hotel and Tourism International Relations and Humanities Law Medicine Social Sciences Psychology and Counselling Sport 	Maximum 4 years	Jan May Sep	7.0 (6.5)	063150J	\$37,110 per annum
Master of Philosophy PROGRAM DESCRIPTION <ul style="list-style-type: none"> Undertake an extended and focused study in a specific area of research interest, or development of creative works. Study culminates in a 30,000 - 40,000-word piece of work, or equivalent for a creative arts project. In particular circumstances, this program can be used as a pathway to PhD studies, pending appropriate approvals. ENTRY REQUIREMENTS <ul style="list-style-type: none"> Australian Qualifications Framework Level 7 Bachelor degree in the same discipline. RESEARCH AREAS <ul style="list-style-type: none"> Architecture and Built Environment Business and Commerce Communication and Creative Media International Relations and Humanities Social Sciences Psychology and Counselling 	Maximum 2 years	Jan May Sep	7.0 (6.5)	072092F	\$37,110 per annum



Professor Russ Chess-Williams, Professor of Pharmacology supervises a research student in Bond's Centre for Urology Research (CUR).



Surfers Paradise at twilight, Gold Coast, Australia

English Language Requirements

All Bond degrees have specific English language entry requirements, which students can meet in a variety of ways.

If an applicant provides evidence that fits under more than one category, then the most recent evidence will be used for admission.

For updated information, please visit bond.edu.au/english-requirements.

APPROVED ENGLISH LANGUAGE TEST

The university accepts the following English language tests for entry into our programs:

- IELTS
- TOEFL iBT
- Cambridge English Advanced (CAE)
- Pearson Test of English Academic (PTE)

Please note that approved English language test results must have been achieved not more than 24 months before the applicant commences their degree. Specific English language test results for programs can be found on the following page.

SUCCESSFULLY COMPLETED EDUCATION IN ENGLISH

Applicants who are able to present evidence of successfully completed secondary education (equivalent to Australian Senior Certificate of Education) or greater that was taught and assessed in English in one of the countries listed below where English is the first language are not required to submit an English language test with their application:

- Australia
- Canada
- England
- New Zealand
- Northern Ireland
- Republic of Ireland
- Scotland
- Singapore
- South Africa
- United States of America
- Wales

STUDENTS FROM INTERNATIONAL SECONDARY SCHOOLS WHERE THE FULL MEDIUM OF INSTRUCTION IS ENGLISH

Applicants to undergraduate programs from overseas international secondary schools where the full medium of instruction is English (such as members listed at cois.org) will be required to submit a letter from the Principal certifying the medium of instruction unless evidence to that effect is located on the transcripts.

Please note: In the interests of ensuring students' academic competency, students admitted under any of the above, who are having academic difficulties due to English language, may be asked to undertake an English language test at the discretion of the faculty of enrolment.

BOND UNIVERSITY COLLEGE'S ENGLISH FOR ACADEMIC PURPOSES

An applicant may use Bond University College's English for Academic Purposes (EAP) to meet English language entry requirements for foundation, diploma and undergraduate and postgraduate degrees. For further information on the different EAP levels and pathways into the University, please see page 29.

These entry requirements are correct at time of printing and are subject to change.

For more information on English Language Requirements please visit, bond.edu.au/english-requirements.

Approved English Language Test Requirements - Undergraduate

UNDERGRADUATE PROGRAMS	APPROVED ENGLISH LANGUAGE TEST RESULTS
<p>Direct entry into:</p> <ul style="list-style-type: none"> • Bachelor of Psychological Science • Bachelor of Psychological Science with Honours • Bachelor of Laws • Bachelor of Business Law • Bachelor of Jurisprudence 	<ul style="list-style-type: none"> • IELTS score 7.0 (No sub score less than 6.5) • TOEFL-iBT 98 • CAE 185 (No sub score less than 176) • PTE 65
<p>Direct entry into:</p> <ul style="list-style-type: none"> • Bachelor of Arts • Bachelor of Communication • Bachelor of Film and Television • Bachelor of Film and Television (3 Year Program) • Bachelor of International Relations • Bachelor of Interactive Media and Design • Bachelor of Journalism • Bachelor of Global Studies (Sustainability) • Bachelor of Social Science 	<ul style="list-style-type: none"> • IELTS score 6.5 (Writing 6.5, Reading 6.0, Listening 6.0, Speaking 6.0) • TOEFL-iBT 85 with a minimum of 24 in Writing • CAE 176 (Writing 176, Reading 169, Listening 169, Speaking 169) • PTE 58 with a Communicative Skills score in Writing of 58
<p>Direct entry into:</p> <ul style="list-style-type: none"> • Bachelor of Business • Bachelor of Commerce • Bachelor of International Hotel and Tourism Management • Bachelor of Sport Management • Bachelor of Biomedical Science • Bachelor of Exercise and Sports Science • Bachelor of Health Sciences • Bachelor of Architectural Studies • Bachelor of Construction Management and Quantity Surveying • Bachelor of Sustainable Environments and Planning • Bachelor of Sustainable Environments and Planning (3 Year Program) <p>Conditional admission to:</p> <ul style="list-style-type: none"> • Faculty of Law undergraduate programs undertaking specified English language subjects where electives from the Faculty of Society & Design are permitted • Bachelor of Arts • Bachelor of Communication • Bachelor of Communication (Business) • Bachelor of Film and Television • Bachelor of Film and Television (3 Year Program) • Bachelor of International Relations • Bachelor of Interactive Media and Design • Bachelor of Journalism • Bachelor of Global Studies (Sustainability) • Bachelor of Social Science undertaking specified English language subjects where electives are permitted 	<ul style="list-style-type: none"> • IELTS score 6.5 (No sub score less than 6.0) • TOEFL-iBT 79 • CAE 176 (No band less than 169) • PTE 58
<p>Direct entry to the Bachelor of Actuarial Science</p>	<ul style="list-style-type: none"> • IELTS score 6.0 (No sub score less than 6.0) • TOEFL-iBT 65 • CAE 169 (No band less than 169) • PTE 50 (Minimum score of 50 in each of the communication skills)
<p>Direct entry into:</p> <ul style="list-style-type: none"> • Diploma of Business • Diploma of Communication • Diploma of Criminology • Diploma of Health Sciences • Diploma of Legal Studies • Diploma of Sport Management 	<ul style="list-style-type: none"> • IELTS score 6.0 (No sub score less than 5.5) • TOEFL-iBT 60 • CAE 169 (No band less than 162) • PTE 50
<p>Direct entry to the Bond University College Foundation Program</p>	<ul style="list-style-type: none"> • IELTS score 5.5 (No sub score less than 5.0) • TOEFL iBT 50 • CAE 162 (No band less than 154) • PTE 42

Approved English Language Test Requirements - Postgraduate

POSTGRADUATE PROGRAMS	APPROVED ENGLISH LANGUAGE TEST RESULTS
<p>Direct entry into:</p> <ul style="list-style-type: none"> • Doctor of Physiotherapy • Master of Psychology (Clinical) • Master of Occupational Therapy 	<ul style="list-style-type: none"> • IELTS score 7.0 (No sub score less than 7.0) • TOEFL iBT 98 and the following minimum score in each section: 24 for listening; 24 for reading; 27 for writing; and 23 for speaking. • PTE 65 with a minimum score of 65 in each of the four communications skills (listening, reading, writing and speaking).
<p>Direct entry into:</p> <ul style="list-style-type: none"> • Doctor of Philosophy • Doctor of Legal Science • Master of Arts (by Research) • Master of Laws (by Research) • Master's by Research • Master of Science (by Research) (Health Sciences) • Master of Philosophy • Graduate Certificate in Nutrition • Graduate Diploma in Nutrition • Graduate Diploma of Psychological Science • Master of Architecture • Master of Nutrition and Dietetic Practice 	<ul style="list-style-type: none"> • IELTS score 7.0 (No sub score less than 6.5) • TOEFL-iBT 98 • CAE 185 (No sub score less than 176) • PTE 65
<p>Direct entry into:</p> <ul style="list-style-type: none"> • Graduate Certificate in TESOL • Graduate Certificate in TESOL (Online) • Master of Arts (by coursework) • Master of Arts (TESOL) • Master of Arts (TESOL) (Online) • Master of Communication • Master of Communication (Professional) • Master of Criminology • Master of Criminology (Professional) • Master of International Relations • Master of International Relations (Professional) 	<ul style="list-style-type: none"> • IELTS score 6.5 (Writing 6.5, Reading 6.0, Listening 6.0, Speaking 6.0) • TOEFL-iBT 85 with a minimum of 24 in Writing • CAE 176 (Writing 176, Reading 169, Listening 169, Speaking 169) • PTE 58 with a Communicative Skills score in Writing of 58
<p>Direct entry into:</p> <ul style="list-style-type: none"> • BBT Global Leadership MBA • Graduate Certificate of Business • Graduate Certificate of Business Administration • Graduate Certificate in Sport Management • Graduate Diploma in Sport Management • Master of Accounting • Master of Accounting (Professional) • Master of Business • Master of Business (Professional) • Master of Business Administration • Master of Business Administration (Professional) • Master of Business Administration (Specialisation) • Master of Sport Management • Master of Sport Management (Professional) • Graduate Diploma in Legal Practice • Juris Doctor • Master of Laws • Master of Legal Administration • Graduate Certificate in Project Management • Graduate Certificate of Sustainable Environments and Planning • Graduate Certificate of Valuation and Property Development • Graduate Diploma in Construction Management • Graduate Diploma of Sustainable Environments and Planning • Graduate Diploma of Valuation and Property Development • Master of Construction Practice • Master of Construction Practice (Professional) • Master of Project Management • Master of Project Management (Professional) • Master of Sport Management • Master of Sustainable Environments and Planning • Master of Sustainable Environments and Planning (Professional) • Master of Valuation and Property Development • Master of Valuation and Property Development (Professional) 	<ul style="list-style-type: none"> • IELTS score 6.5 (No sub score less than 6.0) • TOEFL-iBT 79 • CAE 176 (No sub score less than 169) • PTE 58
<p>Direct entry into:</p> <ul style="list-style-type: none"> • Master of Actuarial Practice • Master of Actuarial Science • Master of Actuarial Science (Specialisation) • Master of Actuarial Science (Professional) • Master of Finance • Master of Financial Management • Master of Finance (Professional) • Master of Financial Management (Professional) 	<ul style="list-style-type: none"> • IELTS score 6.0 (No sub score less than 6.0) • TOEFL-iBT 65 • CAE 169 (No sub score less than 169) • PTE 50

Undergraduate Academic Entry Requirements by Country

COUNTRY	CURRENT UNDERGRADUATE ENTRY QUALIFICATION SCORES
General Certificate of Education (GCE) Advanced Level subjects	<p>A minimum of three (the best three) A level grades are used for entry.</p> <p>A maximum of two AS level subjects may be combined to substitute for one A Level subject.</p> <p>Bachelor of Actuarial Science requires a minimum of 11 points.</p> <p>Faculty of Law requires a minimum total of 10 points.</p> <p>All other Faculties and programs require a minimum total of 5 points.</p> <p>Points system:</p> <p>A level subjects: A=5, B=4, C=3, D=2, E=1</p> <p>AS level subjects: A=2.5, B=2, C=1.5, D=1, E=0.5</p>
Global Assessment Certificate (GAC)	Overall GAC Grade Point Average 2.6 (3.6 for Law).
India	<p>All programs except Bachelor of Actuarial Science: All Indian Secondary School Certificate (AISSC) or Indian School Certificate (ISC) - minimum 65% average in the best four subjects.</p> <p>Minimum 70% average in the best four subjects for the following State Board Secondary Education exit awards:</p> <ul style="list-style-type: none"> Intermediate Certificate from the Andhra Pradesh Board of Intermediate Education Pre University Certificate from the Karnataka Board of Pre-University Education Higher Secondary certificate from the Maharashtra State Board of Secondary and Higher Secondary Education Higher Secondary certificate from the Tamil Nadu Board of Higher Secondary Education Intermediate Certificate from the Telangana State Board of Intermediate Education <p>Bachelor of Actuarial Science: All Indian Secondary School Certificate (AISSC) or Indian School Certificate (ISC) - minimum 74% average in the best four subjects.</p> <p>Minimum 74% average in the best four subjects for the following State Board Secondary Education exit awards:</p> <ul style="list-style-type: none"> Intermediate Certificate from the Andhra Pradesh Board of Intermediate Education Pre University Certificate from the Karnataka Board of Pre-University Education Higher Secondary Certificate from the Maharashtra State Board of Secondary and Higher Secondary Education Higher Secondary Certificate from the Tamil Nadu Board of Higher Secondary Education Intermediate Certificate from the Telangana State Board of Intermediate Education
International Baccalaureate Diploma (IB)	<p>Bachelor of Actuarial Science requires a minimum of 33 points.</p> <p>Bachelor of Laws requires a minimum of 31 points.</p> <p>Bachelor of Business Law; Bachelor of Jurisprudence; Bachelor of Construction Management and Quantity Surveying; Bachelor of Sustainable Environments and Planning; Bachelor of Property; and the Science programs in the Faculty of Health Sciences & Medicine (not the Medical Program) require a minimum of 28 points.</p> <p>Bond Business School (unless specified above); non-Science programs in the Faculty of Health Sciences & Medicine (not the Medical Program) and the Bachelor of Psychological Science programs require a minimum of 27 points.</p> <p>Faculty of Society & Design programs unless specified above require a minimum of 24 points.</p>
Pakistan	<p>All programs except Bachelor of Actuarial Science: Higher Secondary School or Intermediate Certificate (Pre-Engineering and Pre-Medical streams) with a minimum of 70% average.</p> <p>Bachelor of Actuarial Science: Higher Secondary School or Intermediate Certificate (Pre-Engineering and Pre-Medical streams) with a minimum of 73% average.</p> <p>See GCE A Levels (as per GCE requirements)</p>
Sri Lanka	<p>All programs except Bachelor of Actuarial Science: Sri Lankan General Certificate of Education a minimum aggregate of 5 out of 20 in the best four subjects.</p> <p>Bachelor of Actuarial Science: Sri Lankan General Certificate of Education a minimum aggregate of 2.8 out of 20 in the best four subjects.</p> <p>GCE A Levels (as per GCE requirements).</p>

How to Apply to Bond

1. PICK YOUR PROGRAM.

Deciding on a degree or program is a personal choice. It's about choosing the right program for you - your interests, your future.

Find more information about programs offered at Bond by visiting bond.edu.au/search-program.

2. APPLICATION PROCESS.

Applying to Bond to study is easy! Applications for most Bond programs can be lodged at any time directly to the University or through a representative in your country. There is no application fee.

For more information on how to apply, visit bond.edu.au/apply.

3. REQUIRED DOCUMENTS.

Make sure that you complete all required fields in your application form including uploading required documentation.

This documentation may include:

- Academic Transcripts
- Academic References
- Passport
- Resume / CV
- English language proficiency test
- Graduation Diplomas
- Any other documents required for specific programs

For more information go to bond.edu.au/application-tips.

4. APPLICATION SUBMISSION.

You can submit your application directly or via an agent. You or your agent will receive an email from Bond University to confirm your application was successfully submitted. The application review process will take approximately two weeks provided all supporting documentation has been provided. For more information, visit bond.edu.au/international

5. RECEIVE AND ACCEPT YOUR LETTER OF OFFER.

If your application is successful, you will receive an email from us offering you to officially become a Bond student. This email includes:

- A formal Letter of Offer from Bond University
- A Response to Offer form
- Information about fee payment options and accommodation

To accept your offer, all you need to do is complete and return your Response to Offer form to admissions@bond.edu.au and pay the required fees as listed on your offer, including receipt of Overseas Health Cover (OSHC). If you applied via an agent, please get in touch with them to find out how you can accept and pay.

Explore Bond University

Take a 360-degree tour of Bond University from anywhere in the world! Immerse yourself in our campus and state-of-the-art facilities with the Bond Now app.

Download the app or view on your desktop.

bond.edu.au/desktopvr



SEARCH "BOND NOW"



KEY DATES

EVENT / ACTIVITY	JANUARY SEMESTER (191)	MAY SEMESTER (192)	SEPTEMBER SEMESTER (193)
Orientation	9 January	8 May	4 September
Registration for new students	9 January	8 May	4 September
Classes commence	14 January	13 May	9 September
Examinations commence	11 April	9 August	6 December
Semester ends	18 April	17 August	14 December
Examination results available	6 May	2 September	6 January, 2020

International Regional Managers

For our full list of Bond representatives by area, please visit bond.edu.au/contact.

Bond International

Bond University
Gold Coast Queensland 4229
Australia

Phone: +61 7 5595 1024

Email: international@bond.edu.au

bond.edu.au



CRICOS Provider Code 00017B

The information published in this document is correct at the time of printing (October 2018). However, all programs are subject to review by the Academic Senate of the University and the University reserves the right to change its program offerings and subjects without notice. The information published in this document is intended as a guide and persons considering an offer of enrolment should contact the relevant Faculty or Institute to see if any changes have been made before deciding to accept their offer. All fees published in this guide are correct as of April 2018 and are subject to change. Fees per semester are based on an average calculation and may differ depending on the subjects and majors you take in a particular semester. For more information on current fees, visit bond.edu.au/fees. Fees are not inclusive of additional costs such as Student Activities Membership, accommodation, textbooks and living costs.

